



# Alienware M15-P97F SSD Replacement

Guide to replacing the SSD in your Alienware M15-P97F.

Written By: Rachad Quintyne



## INTRODUCTION

This guide will demonstrate how to install and mount an M.2 2280 solid-state drive (SSD) in an Alienware M15 – P97F.

Prior to beginning the SSD replacement, be sure to save and backup important documents, have the new M.2 SSD available, shut down your device, and unplug your laptop from the external power supply.

During the replacement process, be sure to disconnect the battery before working inside the device. It is also important to reconnect the battery after the installation of the new SSD occurs.

After the installation of the new SSD, this guide will continue with how to activate the new drive to allow users to access the new drive from a folder in the primary drive.



### TOOLS:

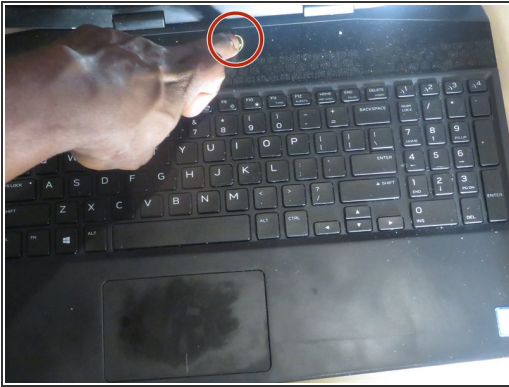
- [Phillips #1 Screwdriver](#) (1)



### PARTS:

- [M2x25](#) (1)
- [Heatsink Hard Drive Cover Thermal Shield for Dell Alienware M15](#) (1)
- [Solid State Drive](#) (1)

## Step 1 — SSD



- Shut down your computer by holding the power button for five seconds.
- Disconnect the computer from all attachments and power sources.

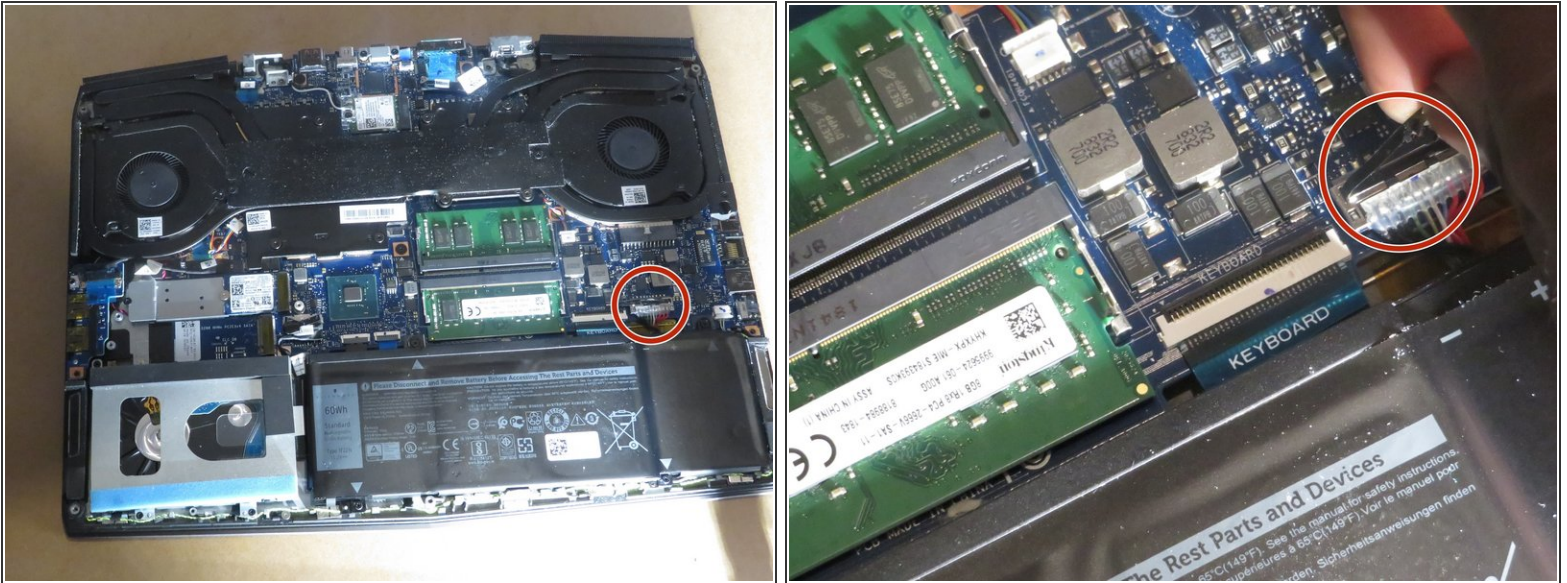
## Step 2



- Use a Phillips #1 screwdriver to remove the six 2.4 mm screws from the bottom of the computer.
- Also, remove the two screws located near the base of the power cord.
- Loosen the three captive screws located closest to the touchpad.
- Remove the back case.



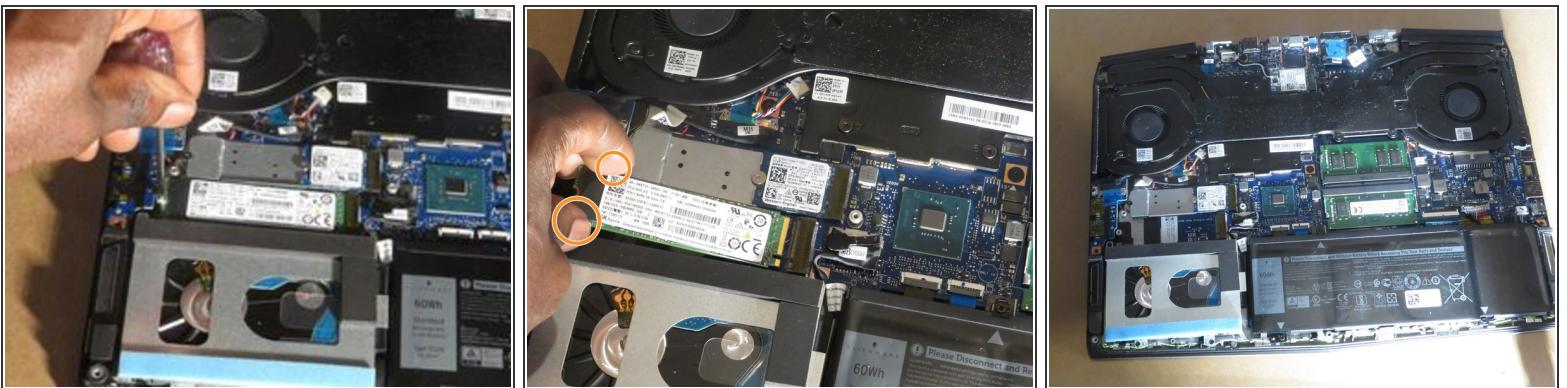
## Step 3



**⚠** Whenever removing or installing parts. The battery should be disconnected.

- Disconnect the battery cable from the system board.

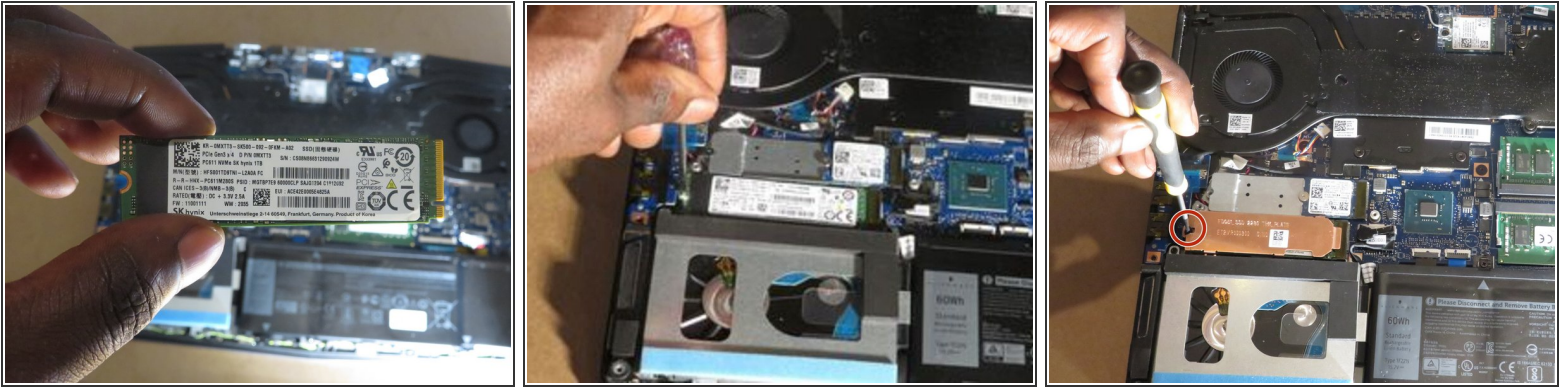
## Step 4



- Use the Phillips #1 screwdriver to remove the single M2x25 screw that secures the solid-state drive.
- Slide the SSD out from the socket to remove it from the system.

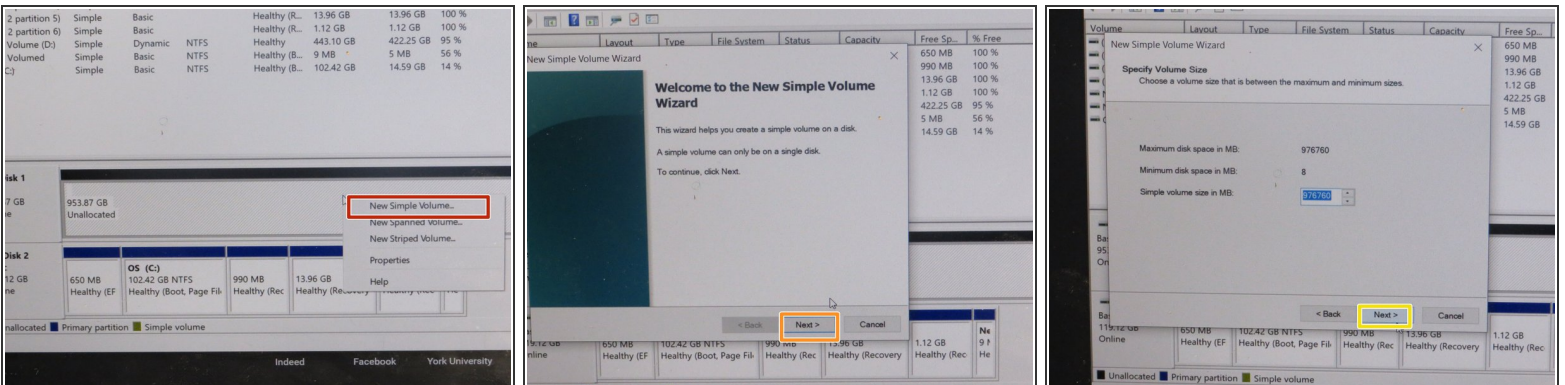
**⚠** Always hold the SSD at the edges.

## Step 5



- Slide the M.2 2280 solid state drive into the M.2 card slot 2.
- Slide the M.2 2280 thermal shield onto the frame.
- Use the Phillips #1 screwdriver to replace the M2x25 screw and secure the SSD.

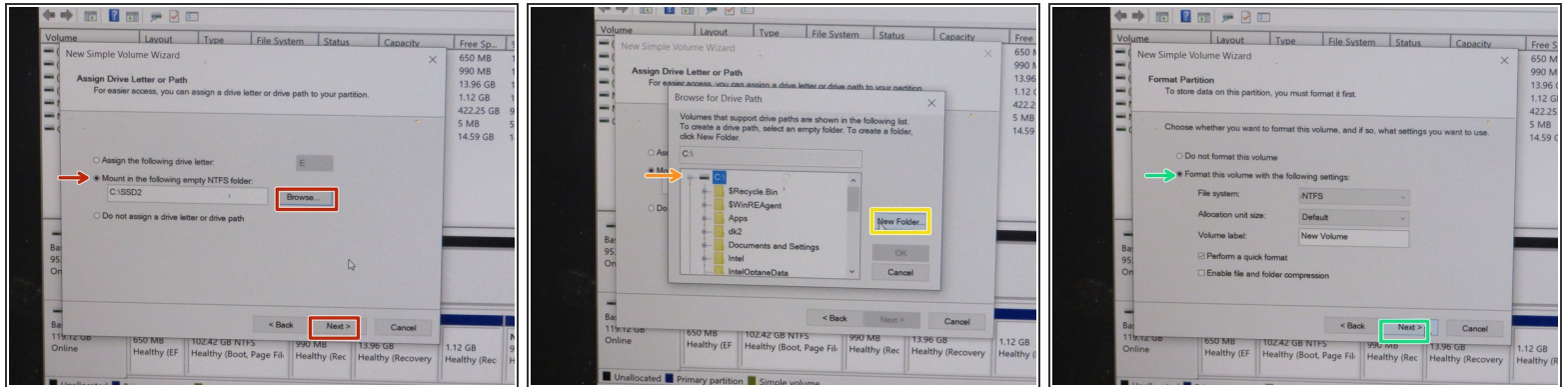
## Step 6



- To mount the solid state drive to primary drive go to the disk management setting. Right-click the unallocated drive and then left-click on the new simple volume.
- ❗ You will get prompted with 5 screens:
  - Welcome to the New Simple Volume Wizards: Press “Next”.
  - Specify Volume size: Choose the amount of memory you want to allocate (1000Mb = 1GB). Then click “Next”.



## Step 7



- Assign Driver Letter or Path: Choose “Mount in the following empty NTFS folder” by clicking browse.
- Now choose what drive to mount to by clicking the drive, it will enable a drop-down list.
- Find the location on the drive that you find suitable. Then make an empty folder or place it into an empty folder. Then press “OK” then “Next”.
- Make sure that the “Format this volume with the following settings” option is selected with default settings then click “Next”.
- To complete the new simple volume wizard, click finish.

To reassemble your device, follow step 3 in reverse order until step 1.