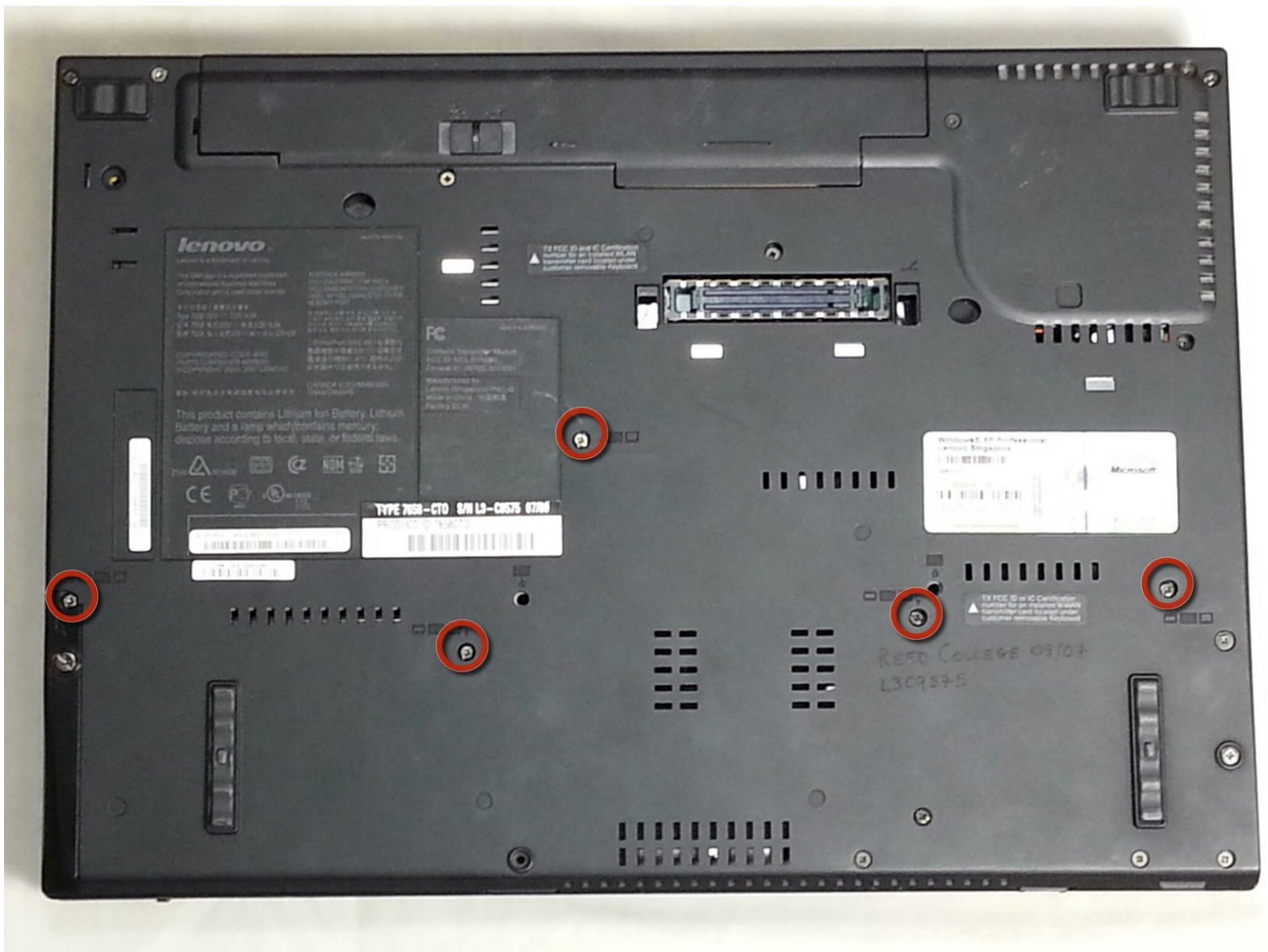




# IBM Thinkpad T61 Keyboard Replacement

This guide will show you how to remove your current keyboard and install a new one.

Written By: Michael Chapiro



# INTRODUCTION

This guide is for those who need to remove the keyboard, in order to replace or clean it.



## TOOLS:

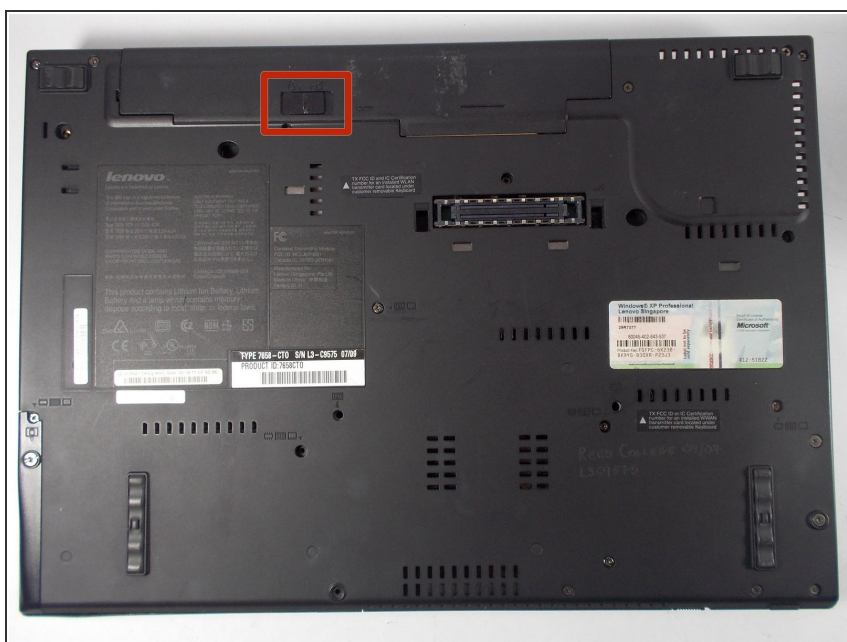
- [Phillips #1 Screwdriver](#) (1)



## PARTS:

- [Replacement Keyboard](#) (1)

## Step 1 — Battery



- Ensure the laptop has been properly shut down and unplugged.
- Turn the computer over so that you can see the battery release tab located near the top of the Thinkpad.

## Step 2



- Use your finger to slide the release tab to the unlocked symbol.



## Step 3



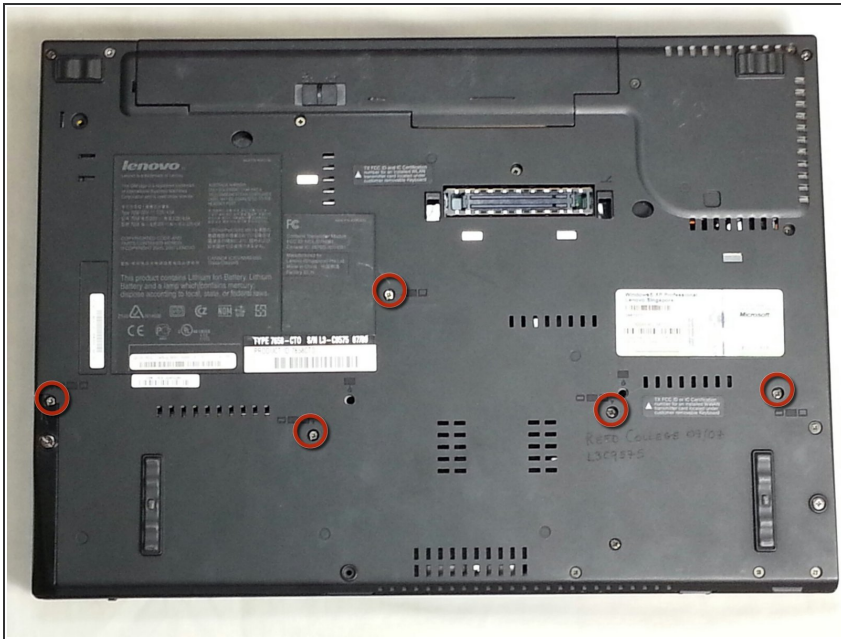
- Hold the tab in the unlocked position and push the battery away from the computer to remove it.

## Step 4



- Slide the new battery in until it clicks.
- Ensure that the release tab is in the locked position.

## Step 5 — Keyboard



- Use the PH1 bit screwdriver, remove five 17.0mm screws on the back of the computer.
- ⓘ These screws have a keyboard symbol next to them.
- Make sure you keep the screws together and do not misplace any of them

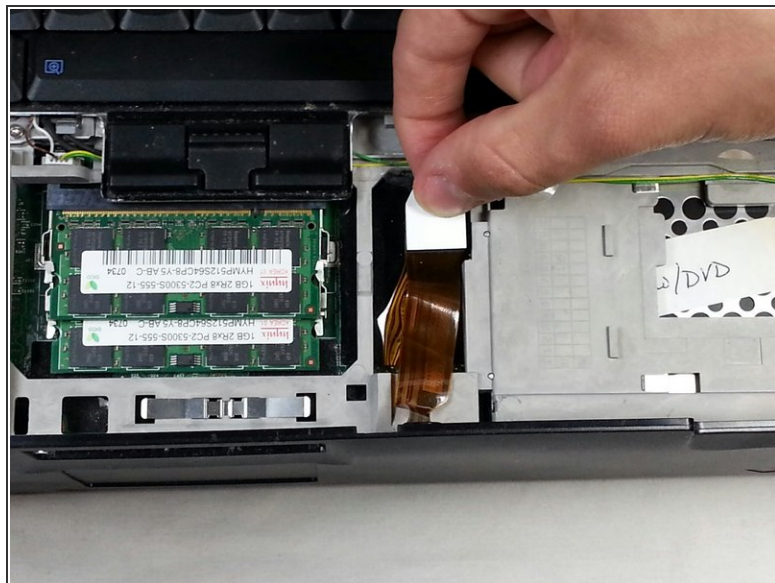
## Step 6



- Turn the computer over so the keyboard is facing upwards, and open the Thinkpad.
- Release the panel by lifting up on the outside edges just below the keyboard.

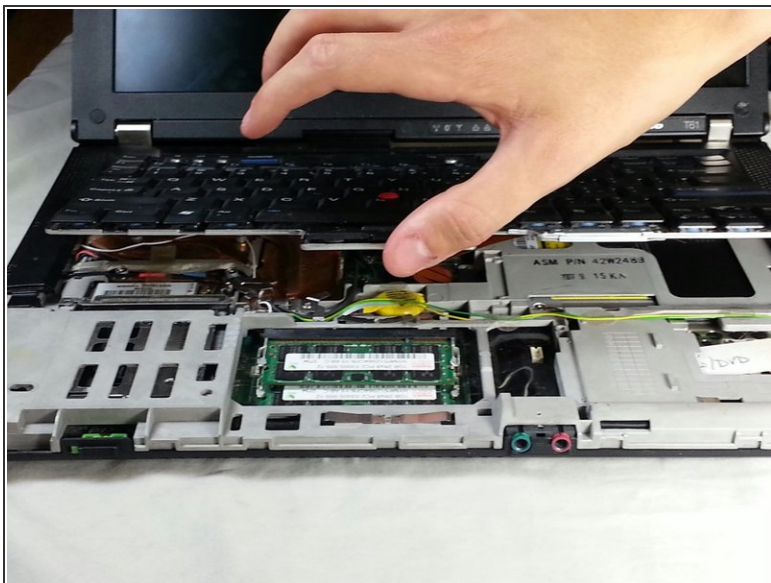


## Step 7



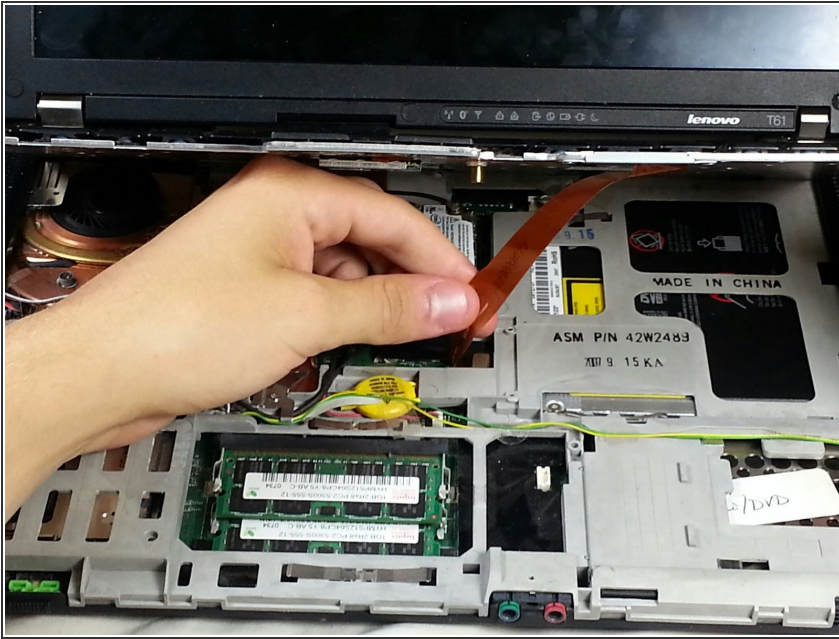
- Gently pull the panel away from the computer.
  - ⚠ BE CAREFUL! The panel is still attached by the touchpad's data cable.
- Detach the connector by pulling up on the white tab.

## Step 8



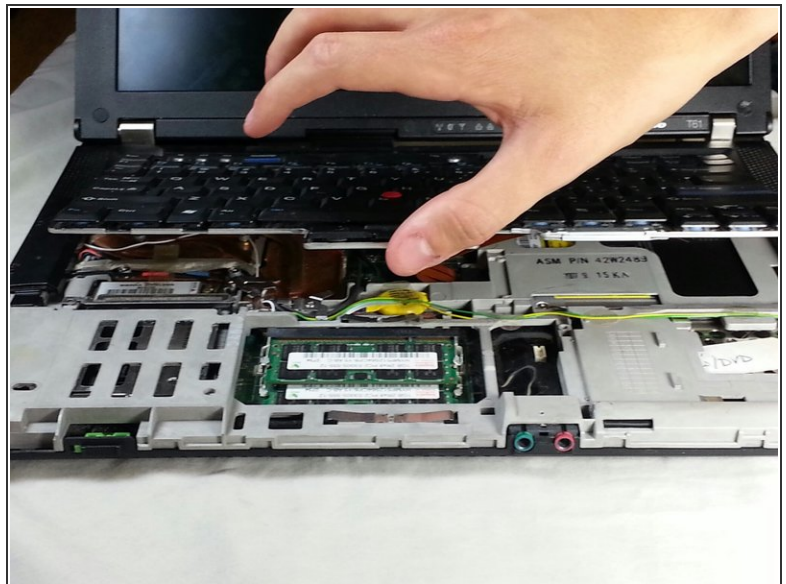
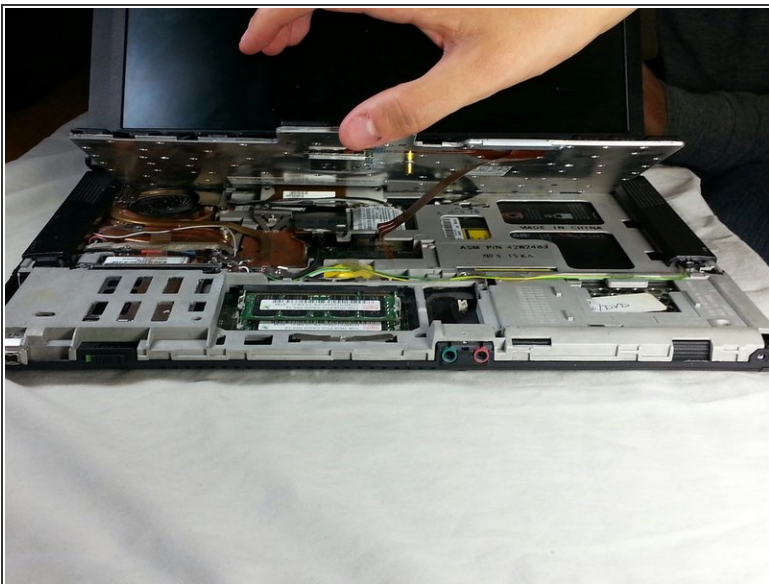
- Using your fingers, lift the front edge of the keyboard until you can see the wire connecting it.

## Step 9



- Gently pull up on the connector to disconnect the keyboard.
- The keyboard will no longer be attached and can now be fully removed.
- Take the replacement keyboard and push the new connector tab back into place.

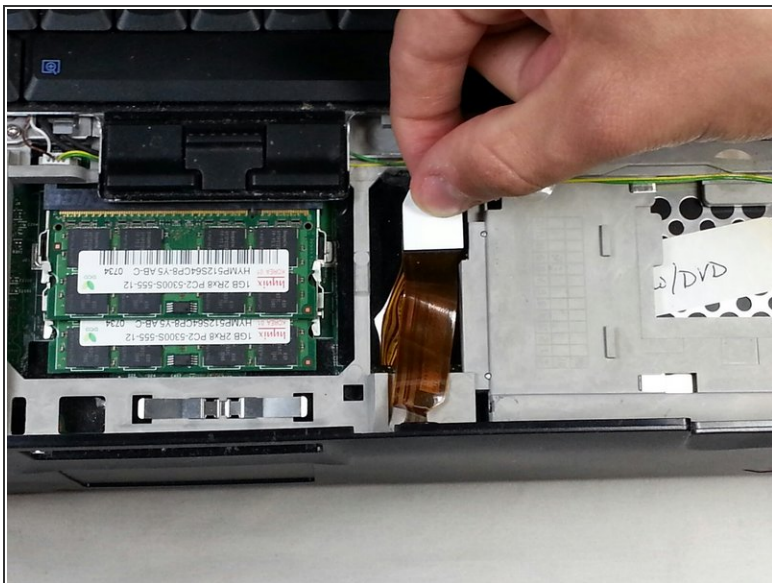
## Step 10



- Line up keyboard and place back into the position, make sure it is lined up with the back first.
- Lower the rest of the keyboard back into place so it lies flat against the computer's shell.

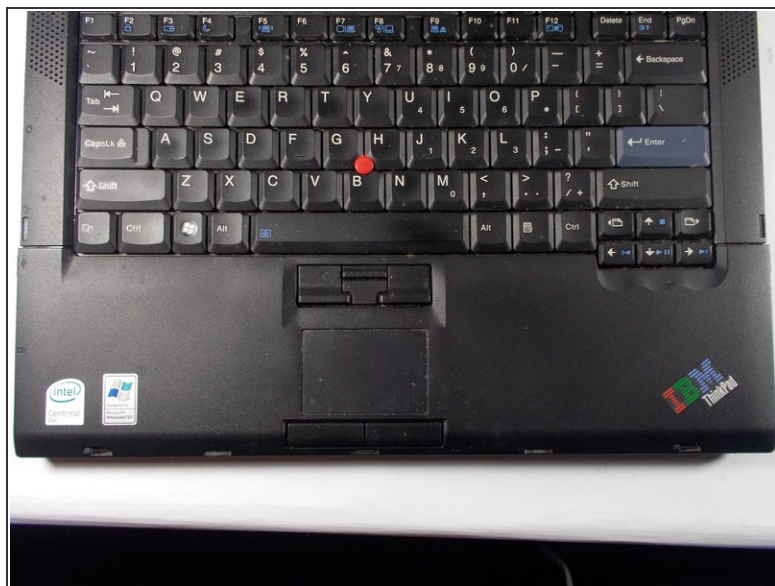


## Step 11



- Push in white tab to reconnect the touch pad panel.

## Step 12



- Push in touch pad panel back into place by lining it up starting from the bottom and pushing it down until it fits back into place.

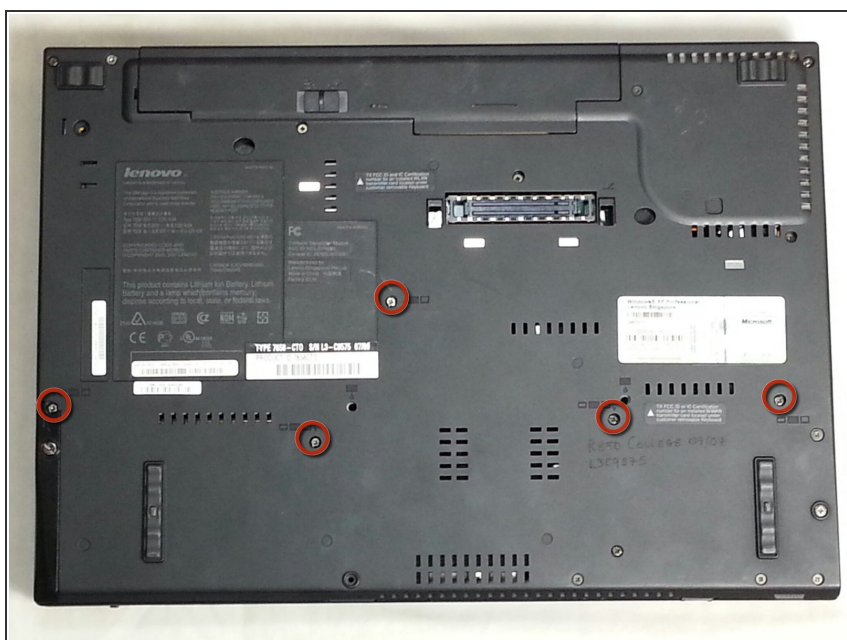


## Step 13



- Close laptop.

## Step 14



- Flip the laptop over so that the side with the screws is facing up.
- Put back all the screws, make sure they are in tightly.
- The new keyboard is now in securely.

Once these steps are completed, the keyboard will be fully replaced.