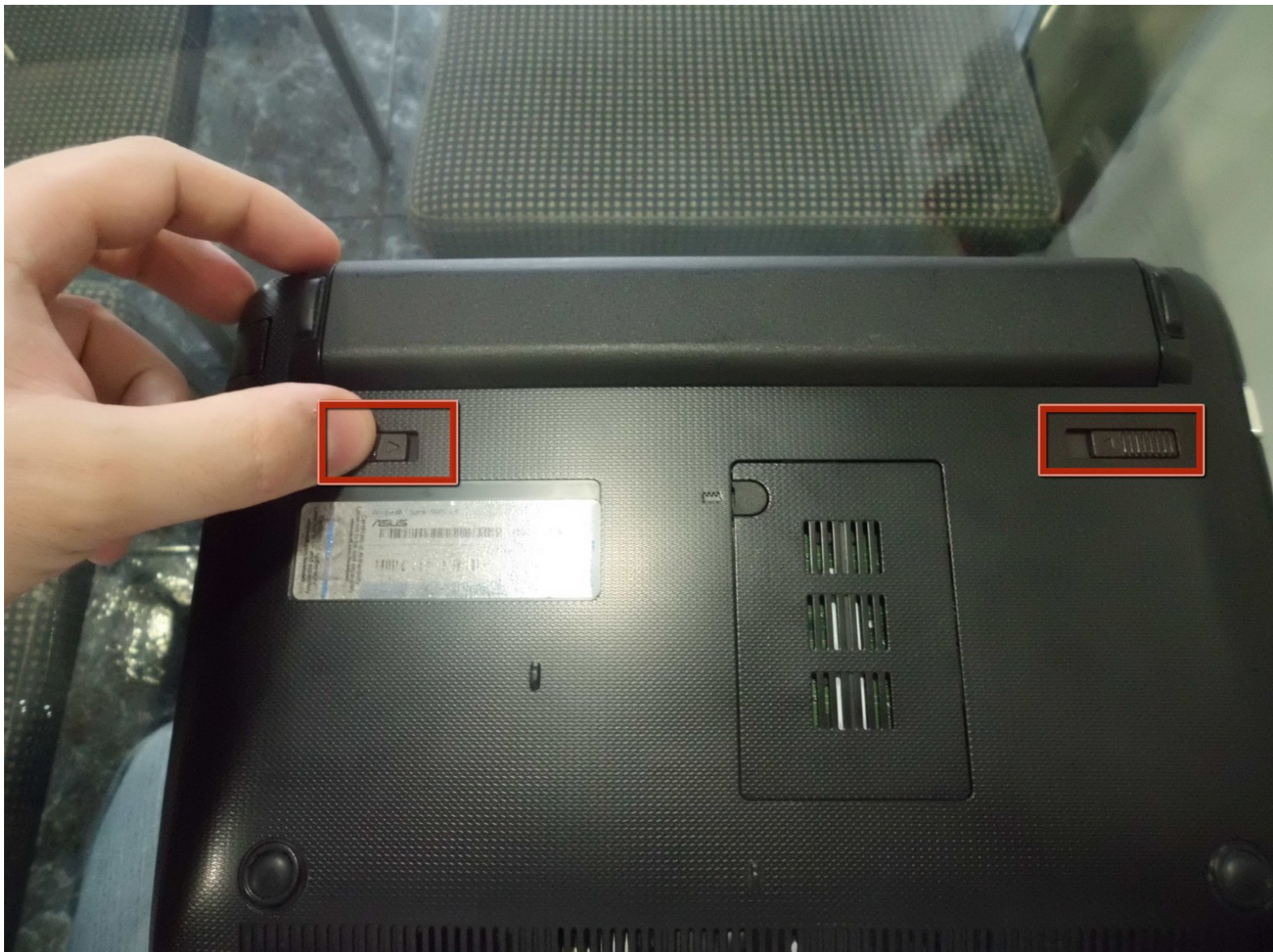




# Asus Eee PC 1015PN motherboard dismantling (English)

Steps to dismount the Netbook Asus Eee PC 1015PN

Written By: Jorge Casal Lopez



# INTRODUCTION

Steps to dismount the Netbook Asus Eee PC 1015PN

---

## TOOLS:

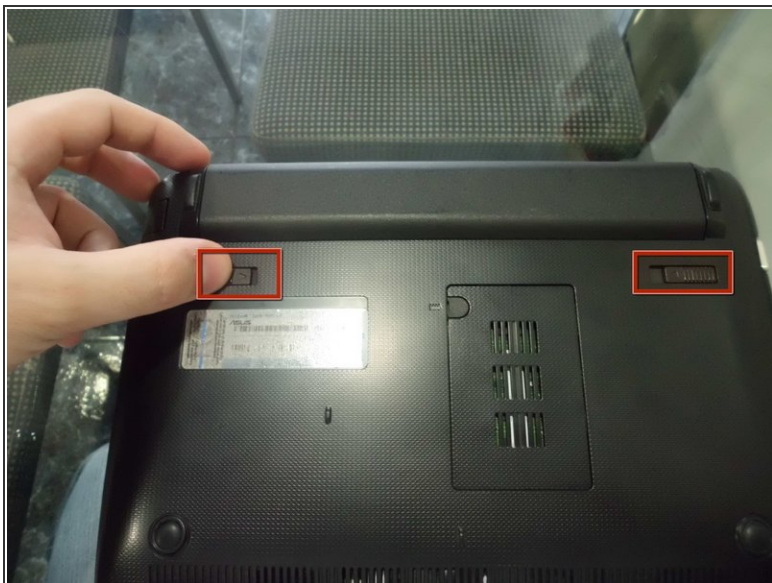
- [Destornillador estrella pequeño](#) (1)
- [Destornillador plano pequeño](#) (1)
- [iFixit Opening Tool](#) (1)

*Opcional*

---



## Step 1 — Motherboard



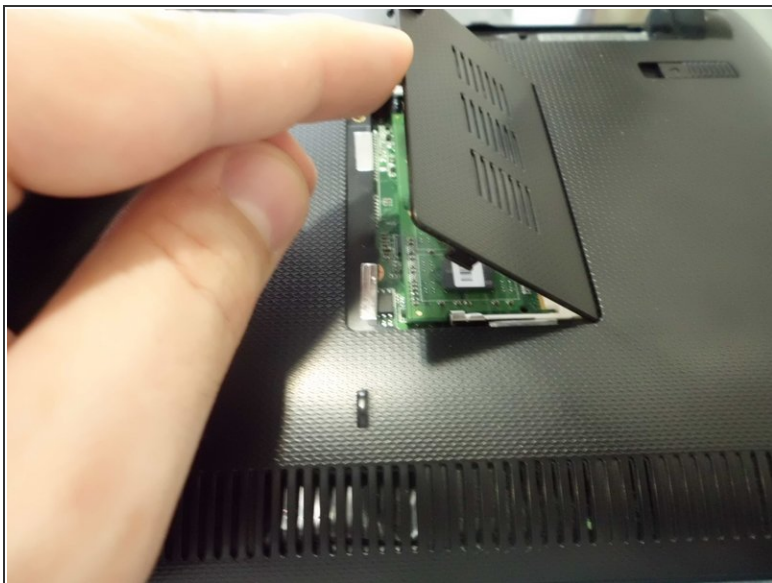
- To remove the battery, unlock the marked tabs.

## Step 2



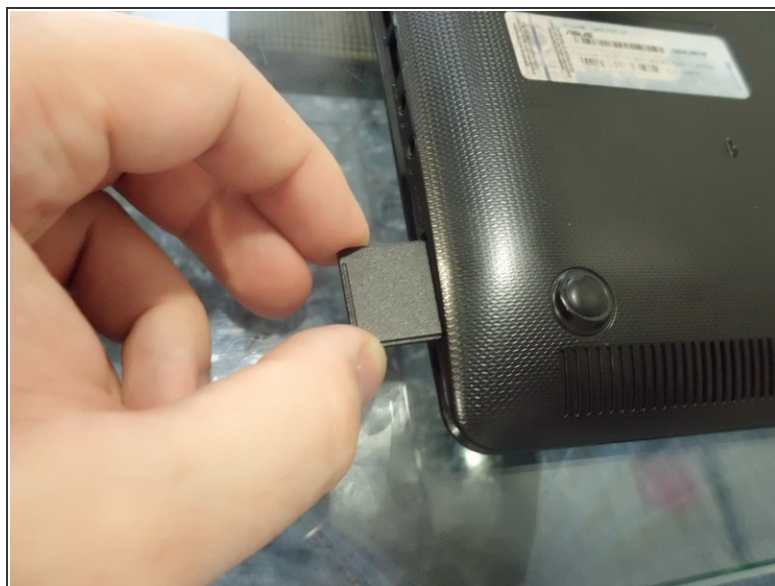
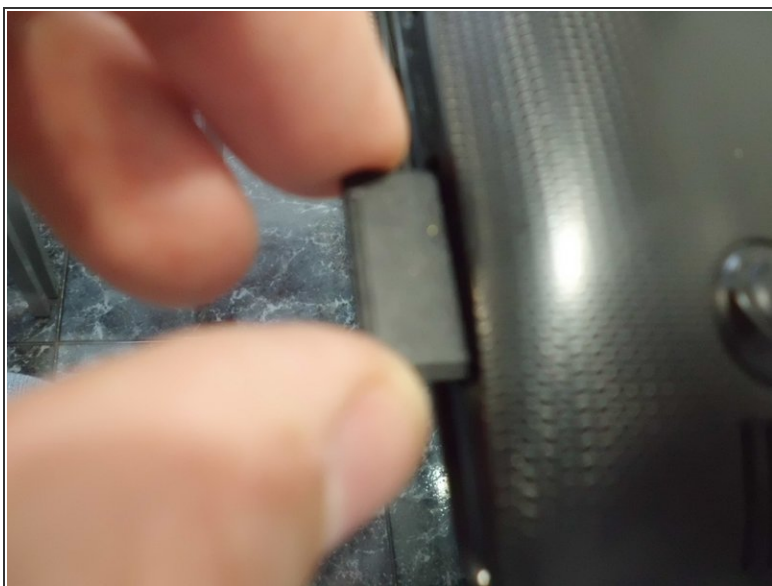
- To remove the memory, lift the plastic tab covering the memory screw with a small slot head screwdriver.

### Step 3



- Lift the plastic cover and remove the SO-DIMM module.

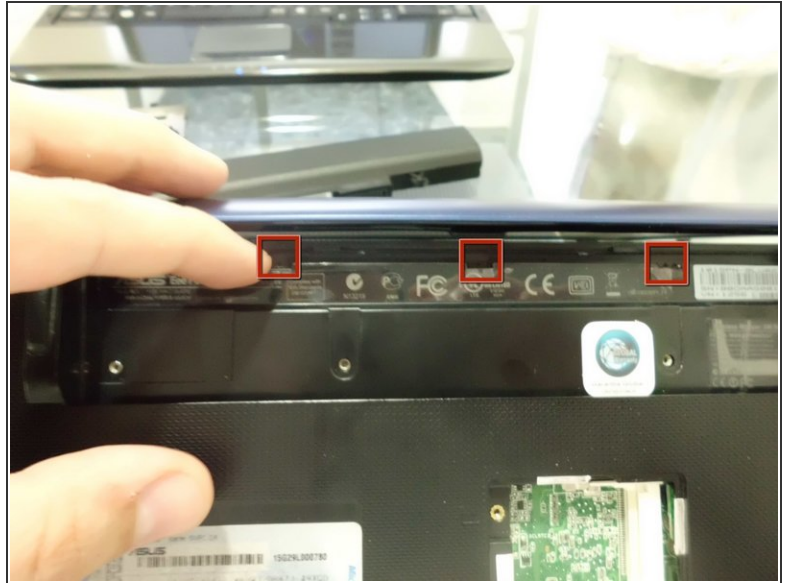
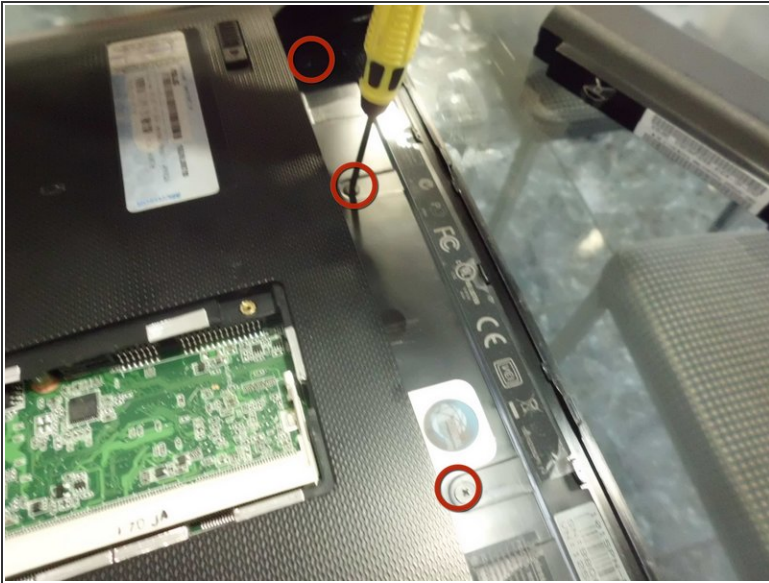
### Step 4



- Remove the dummy SD-Card

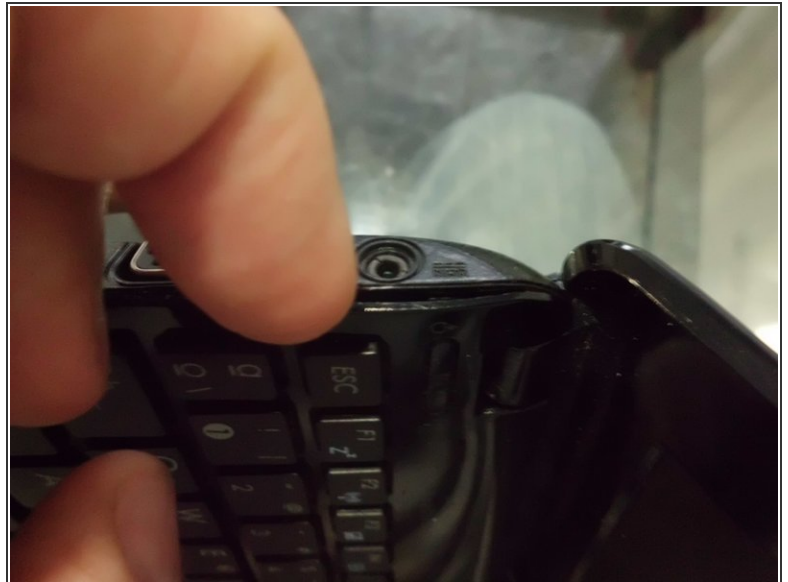


## Step 5



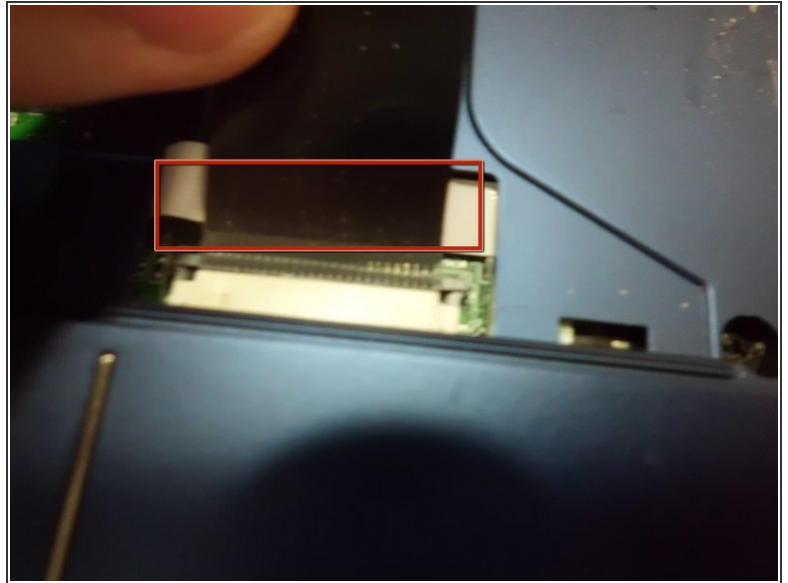
- Unscrew 4 screws that are located in the battery compartment. Once removed, plastic tabs need to be removed on the upper part.

## Step 6



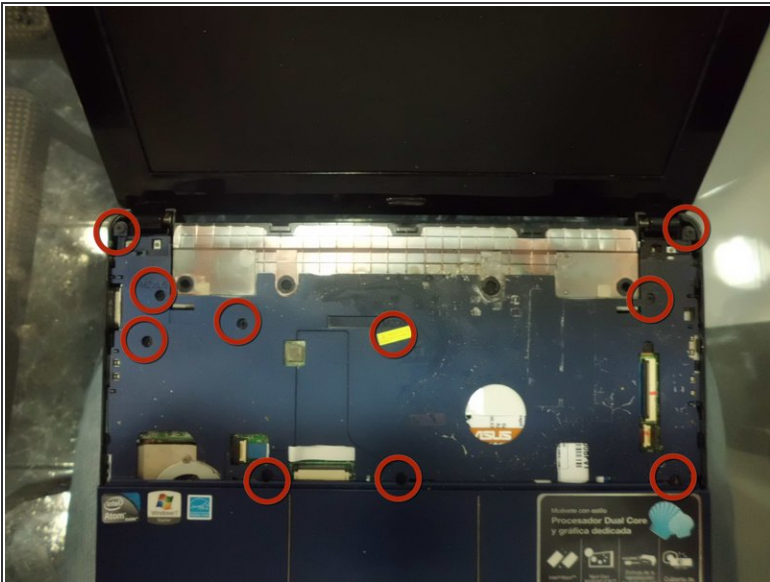
- With an extraction tool, separate the keyboard chassis from the netbook, it has many tabs.

## Step 7



- While separating the keyboard chassis, be careful with the keyboard connector. To remove it, simply slide the plastic retainer to be able to free it.

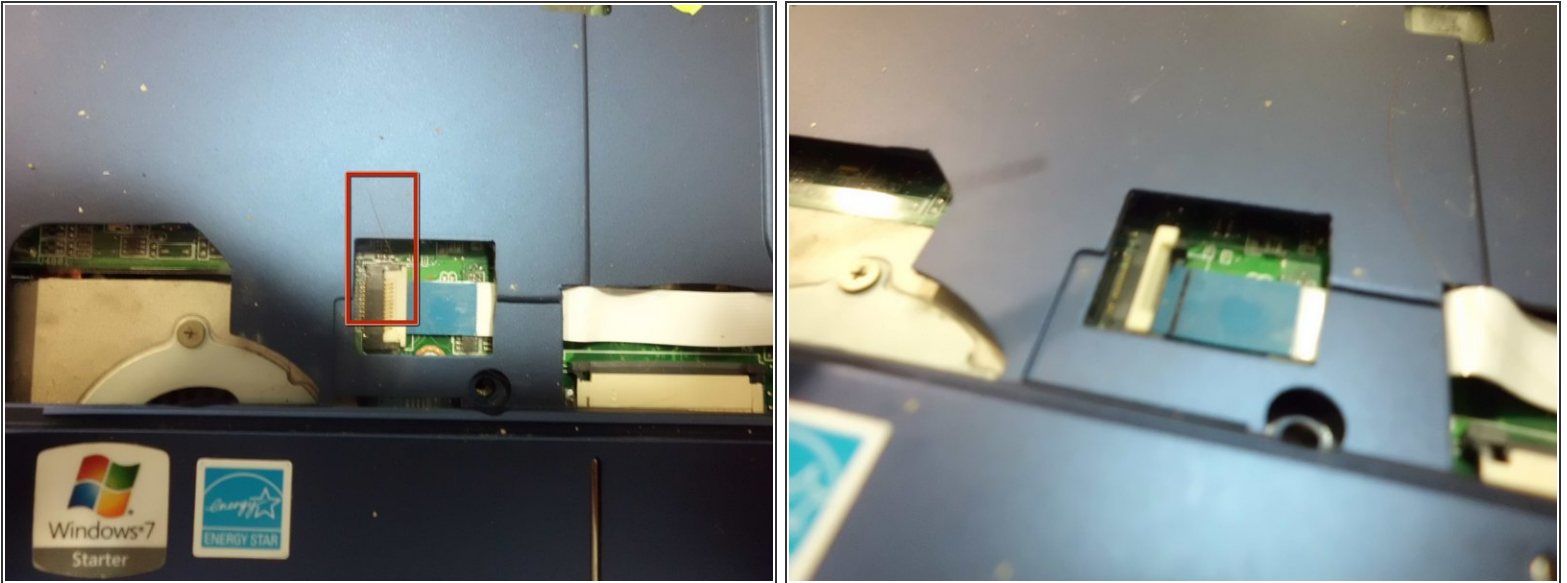
## Step 8



- Unscrew the marked screws. One of those screws is behind a warranty sticker.



## Step 9



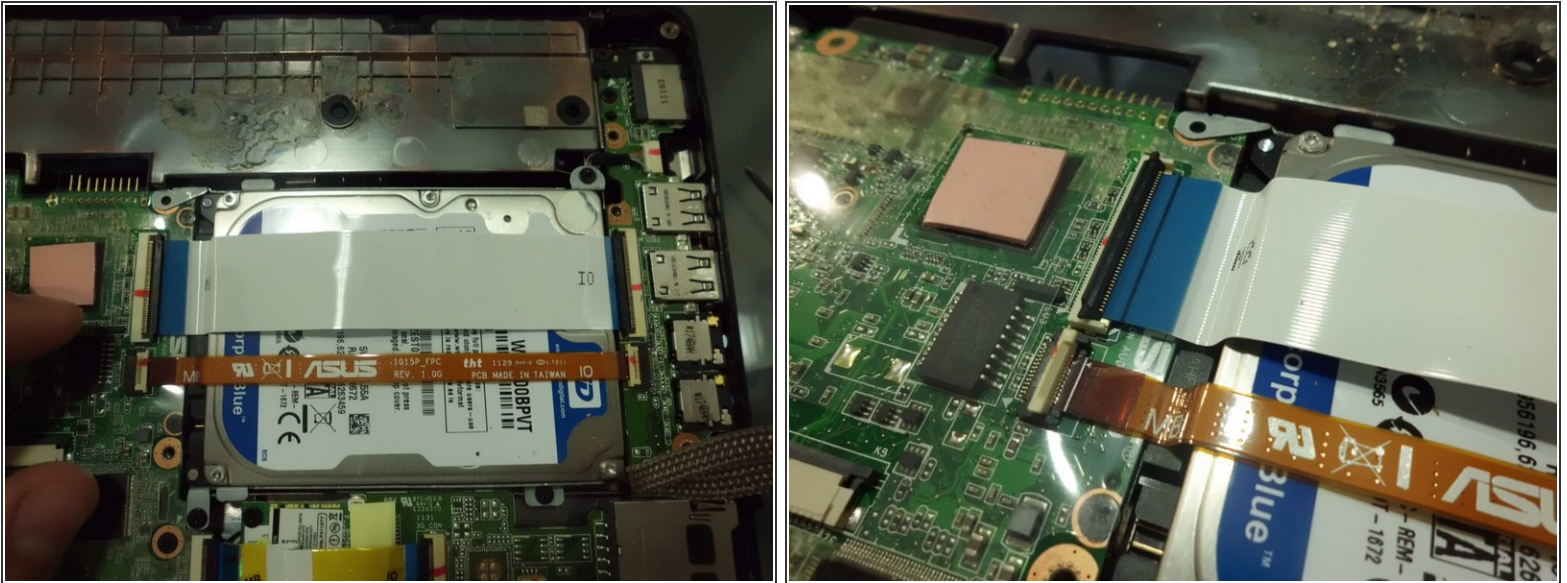
- Disconnect the mouse connector. The connector has a white plastic tab that disconnects the connector.

## Step 10



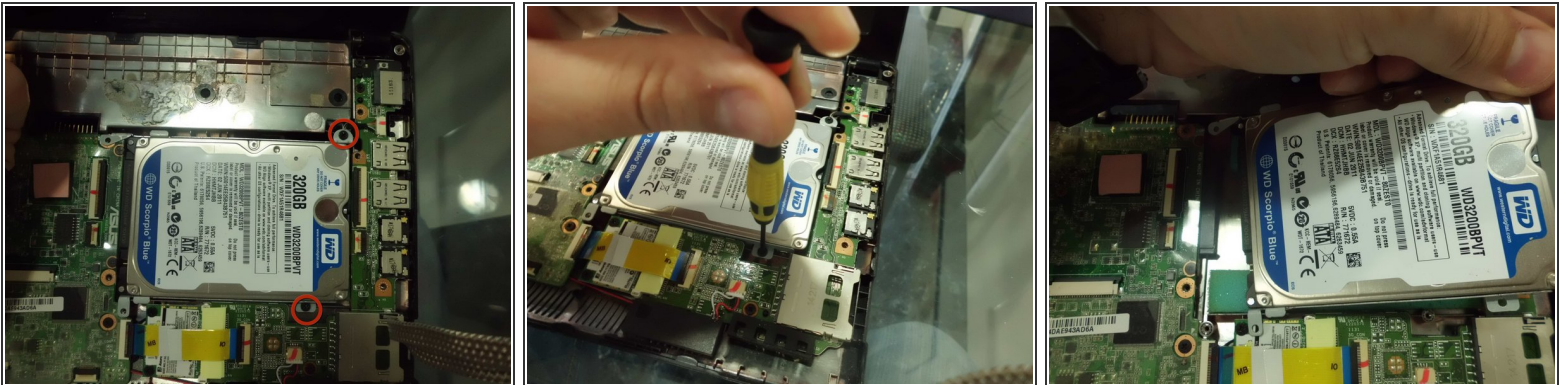
- With a flat screwdriver, release two plastic tabs ( 1 on each side), and with pressure in the front, release the chassis.

## Step 11



- To disconnect the hard drive, two connectors need to be removed, pay attention to the connectors sides, the one on the left is marked as MB and the right is marked as IO.

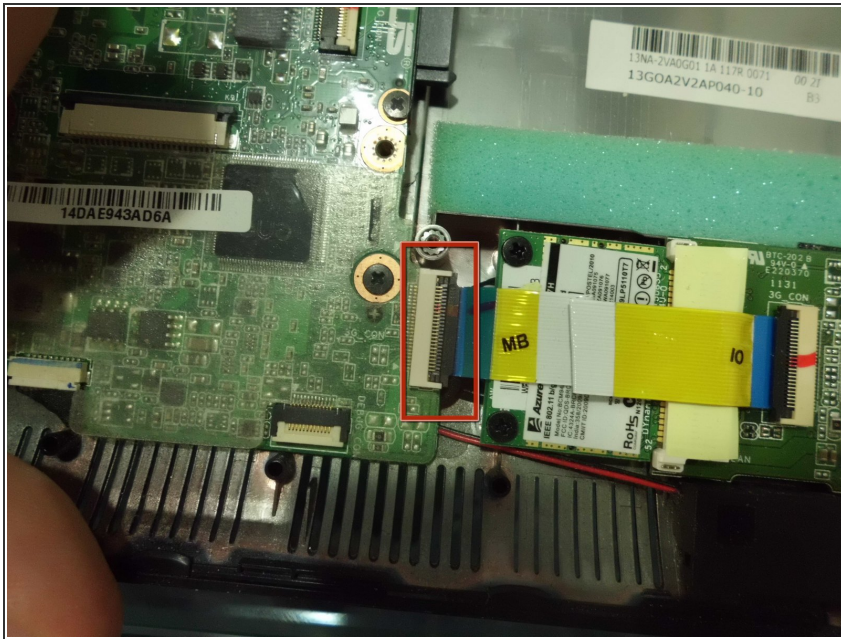
## Step 12



- Remove the screws, and slide the hard drive free.



## Step 13



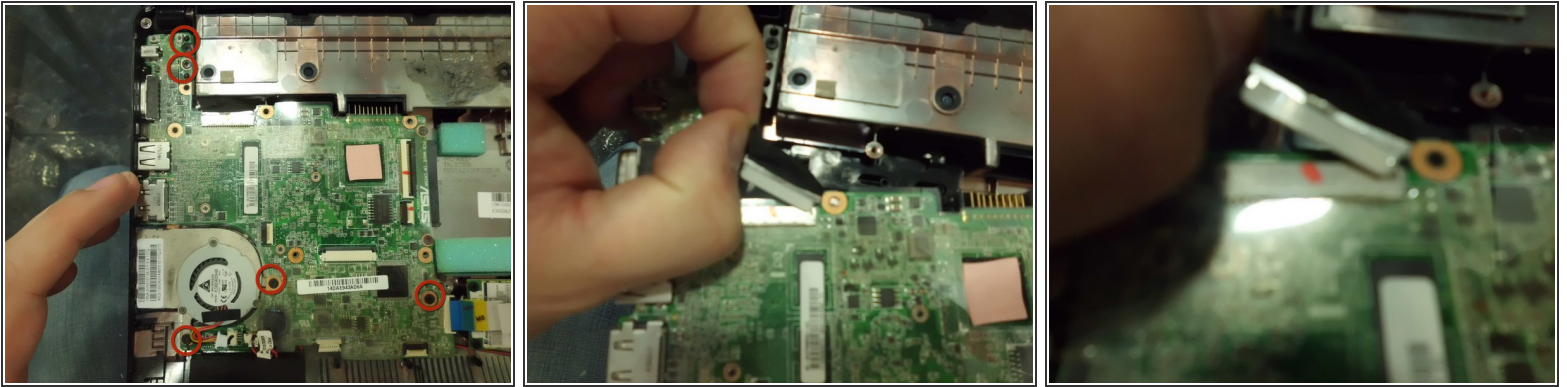
- Disconnect the motherboard connector and the IO plate.

## Step 14



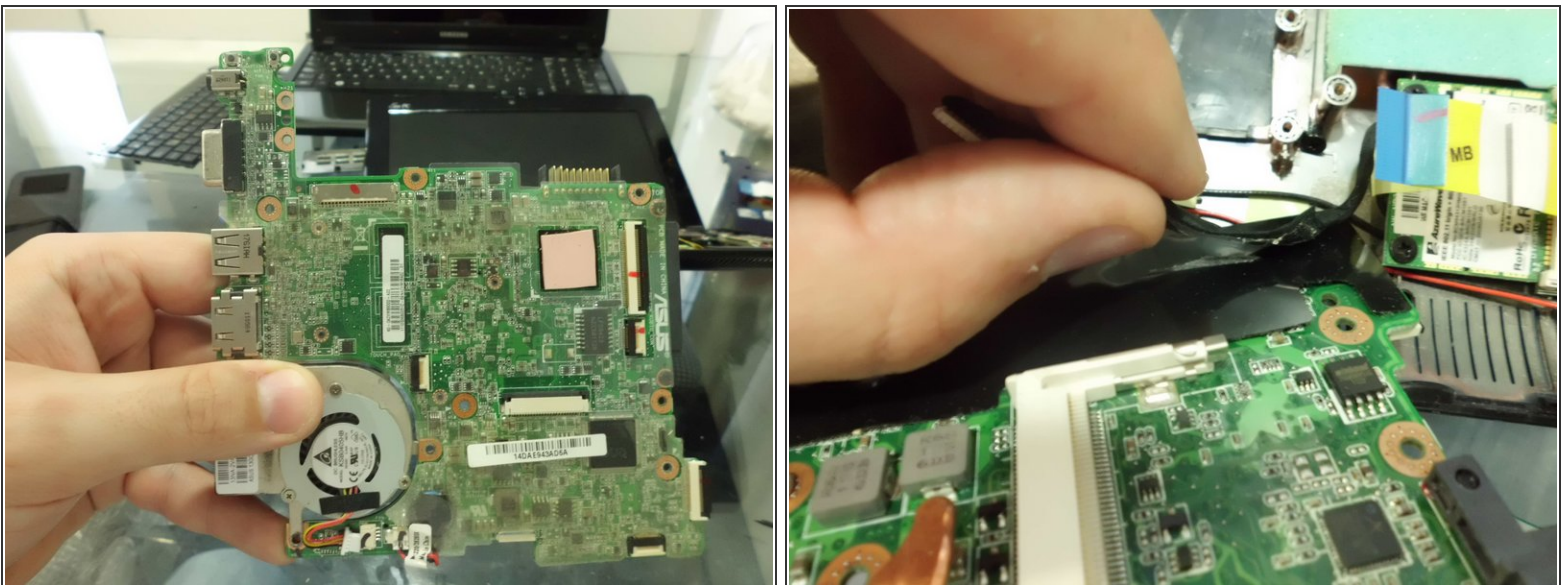
- Remove the fan connector, the BIOS battery and the upper connector.

## Step 15



- Remove the plate screws and release the screen connector.

## Step 16



- Remove the motherboard from the chassis, and disconnect a connector that is glued.

To reassemble your device, follow these instructions in reverse order.