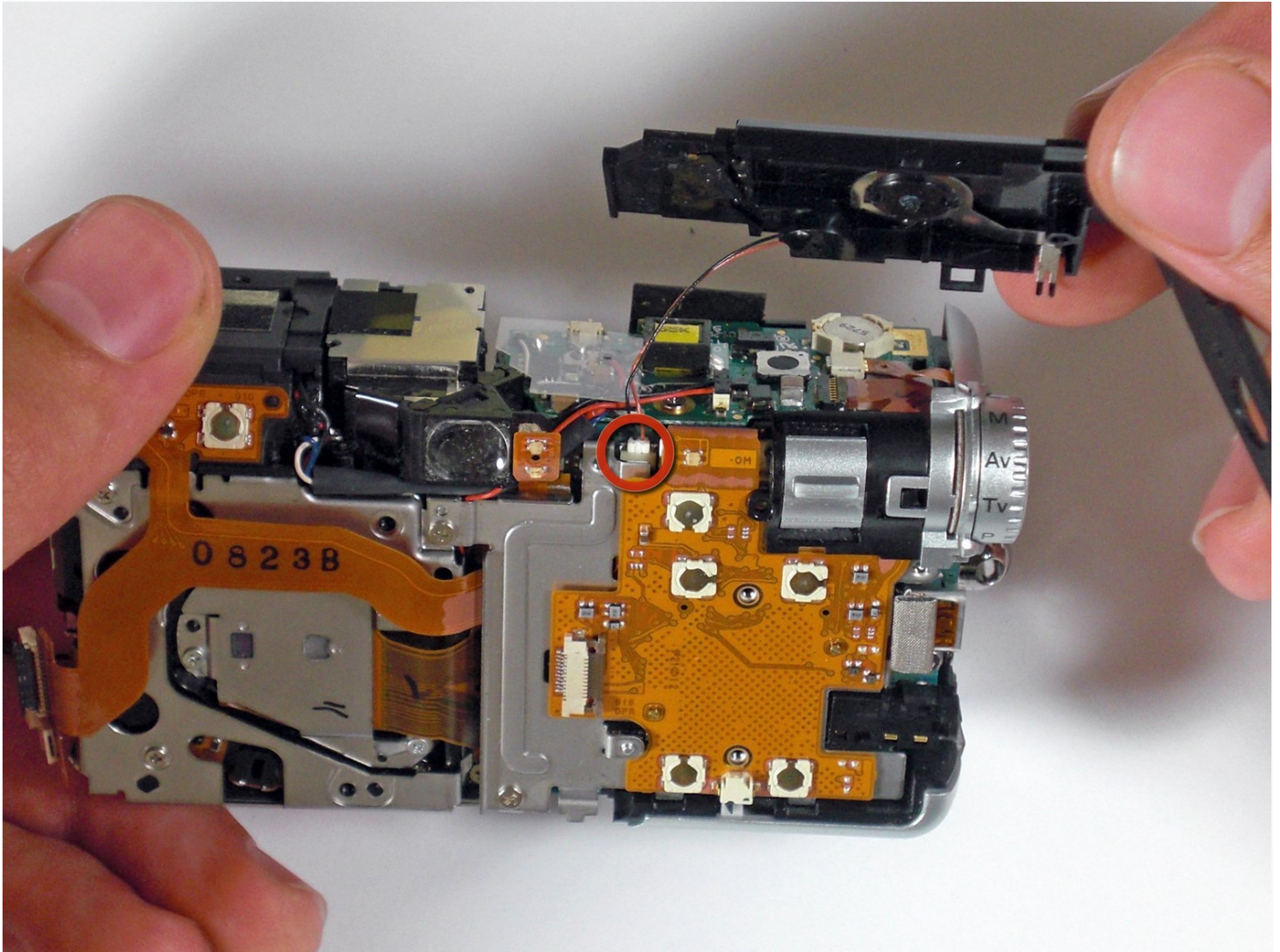




# Canon PowerShot S80 Flash Replacement

This guide serves to replace a faulty flash...

Written By: BrettH



# INTRODUCTION

This guide serves to replace a faulty flash mechanism.

---

## TOOLS:

Spudger (1)

Phillips #00 Screwdriver (1)

Metal Spudger (1)

Tweezers (1)

---

## Step 1 — Outer Casing



- Remove the knot on the wrist lanyard.
- Remove the battery and the memory card.

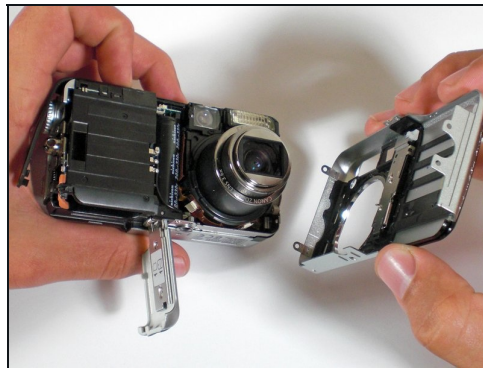


## Step 2



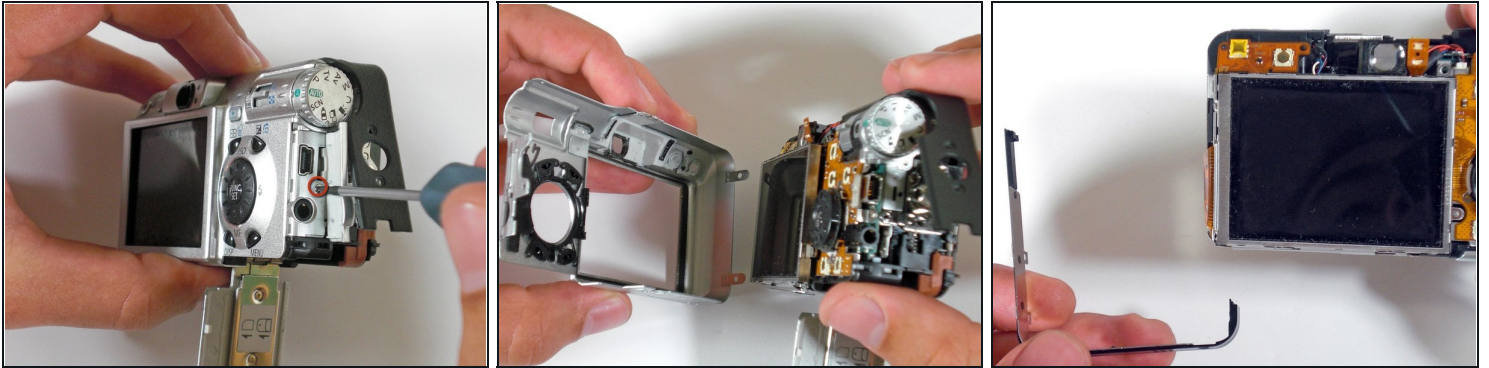
- Begin removing the screws on the bottom of the outer casing.
- Next, remove the rest of the screws from the outer casing.

## Step 3



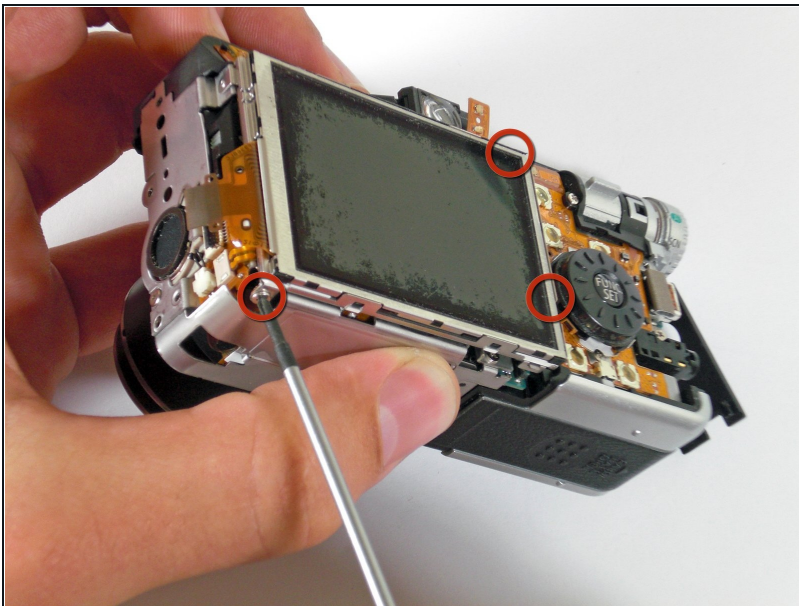
- Gently pull the front cover off of the camera.

## Step 4



- Open the "A/V Out Digital" cover. Remove the screw inside.
- Gently pull off the back casing.
- Remove the black "L" shaped piece of metal.

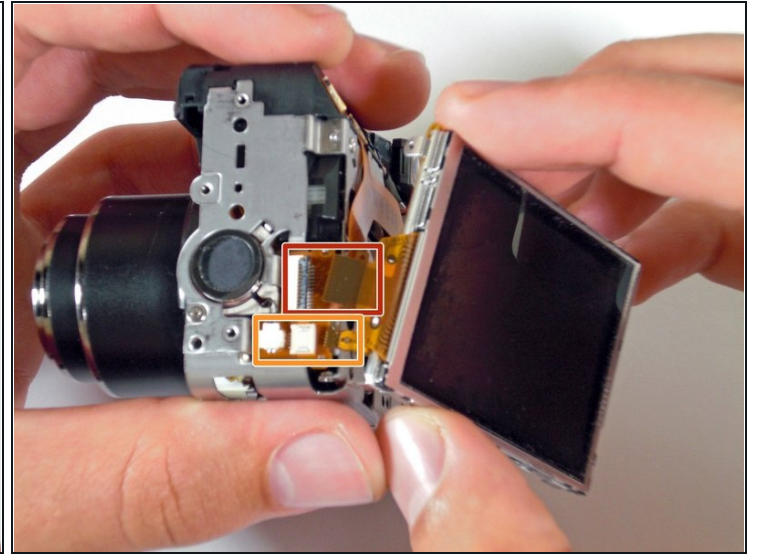
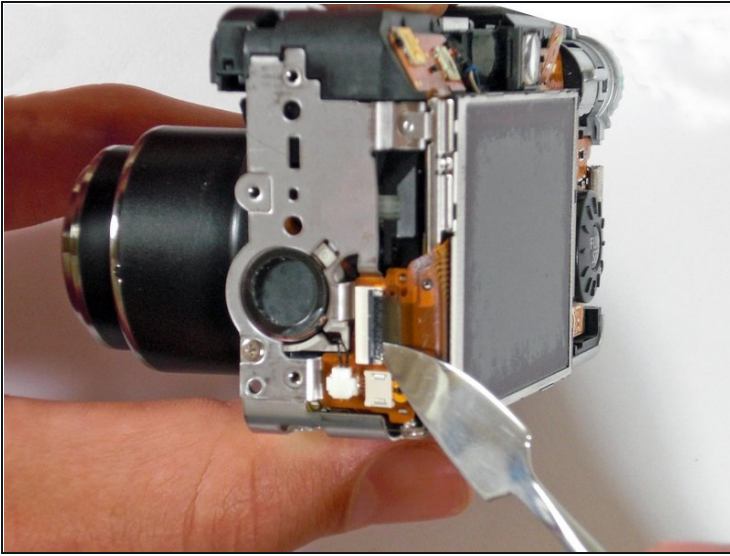
## Step 5 — LCD Screen



- Remove the three screws that are holding the screen in place. Free the screen from the underlying components.
- ⚠ Be careful with the ribbon wire that is still attached on the left side of the screen.

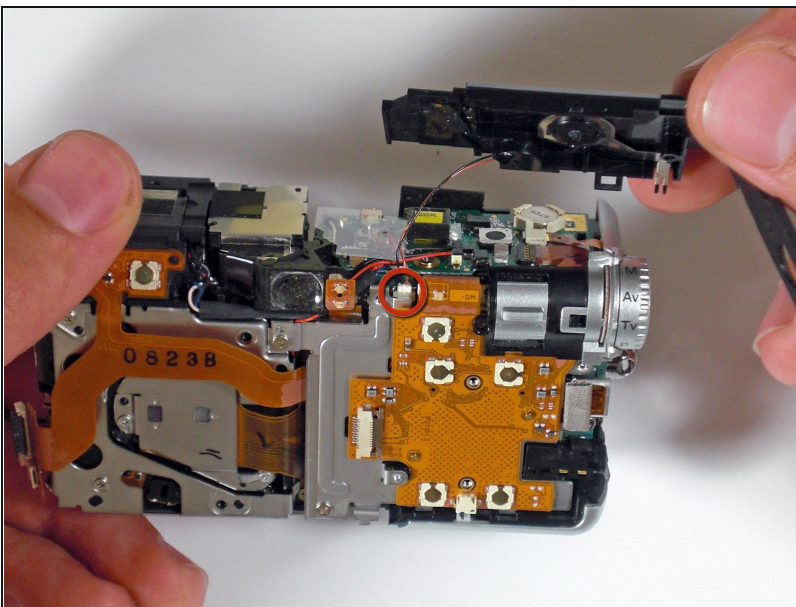


## Step 6



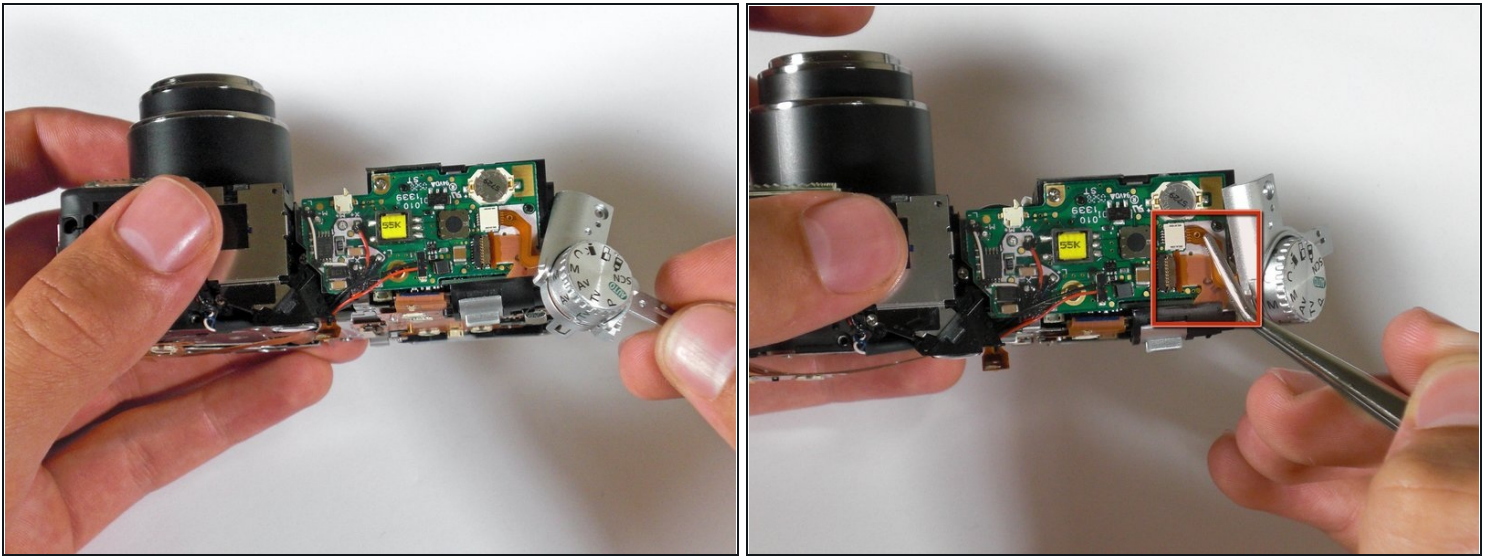
- With the spudger, gently lift the black flap that is holding the wide ribbon cable wire in place.
- Unplug the wide ribbon cable.
- Unplug the narrow ribbon cable to free the LCD screen from the camera body.

## Step 7 — Flash



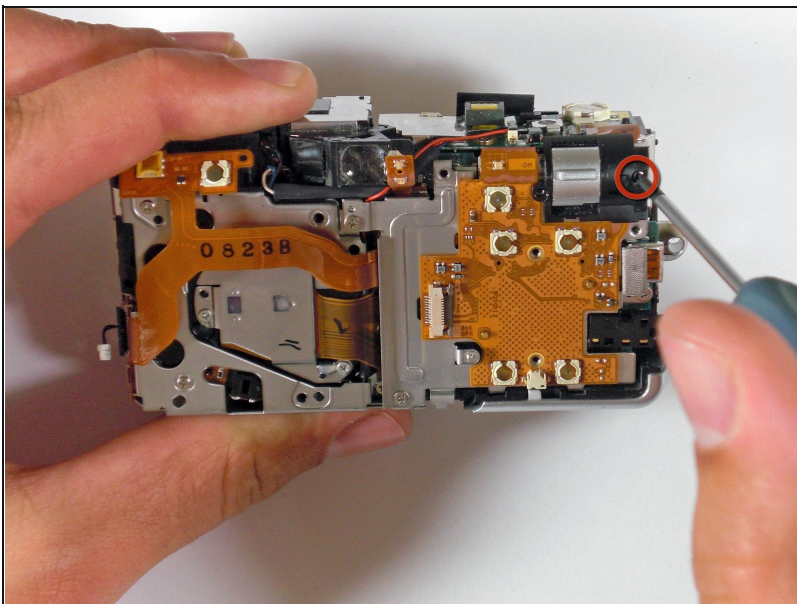
- Remove the L-shaped corner trim containing the picture button.
- Carefully unplug the connection cable that is attached.

## Step 8



- Pull the selector wheel from the top corner of the camera.
- Carefully remove the ribbon cable connection with a set of [tweezers](#).

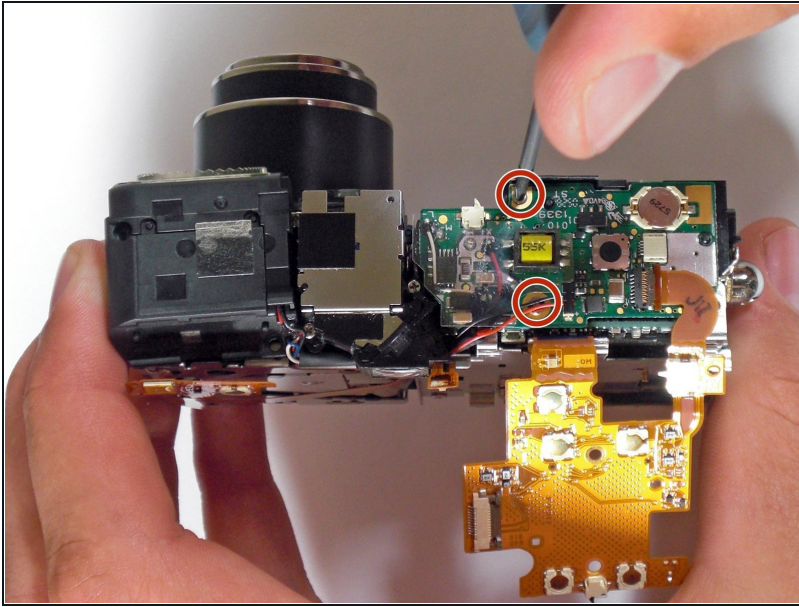
## Step 9



- With a Phillips #00 Screwdriver, unscrew the zoom toggle switch and remove it from the camera.

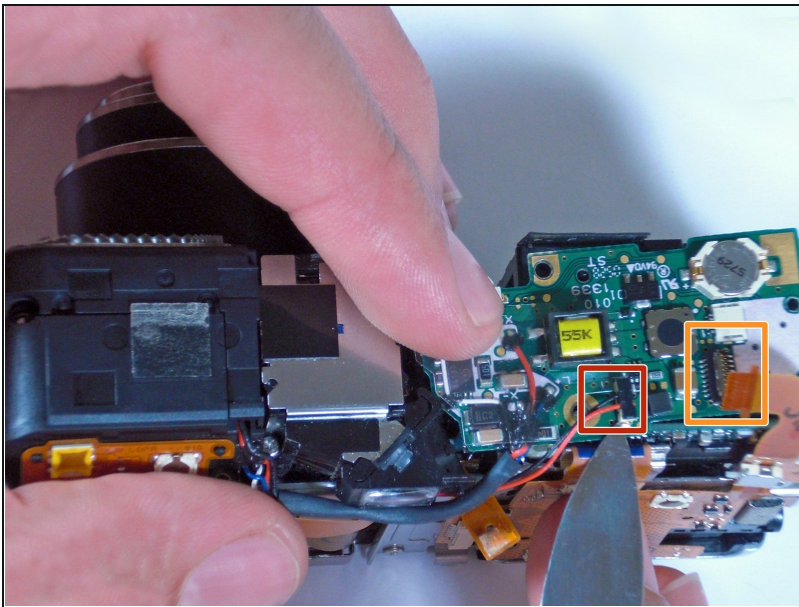


## Step 10



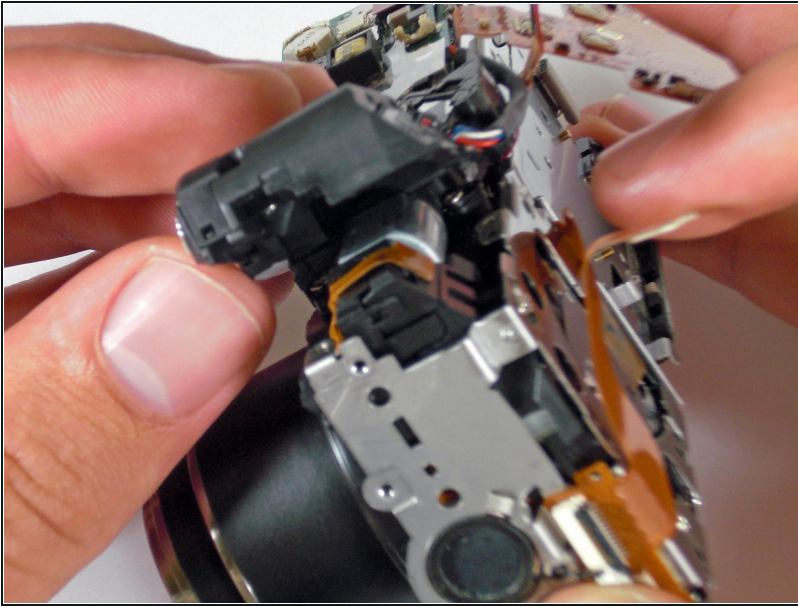
- With a Phillips #00 Screwdriver, unscrew the flash board.

## Step 11



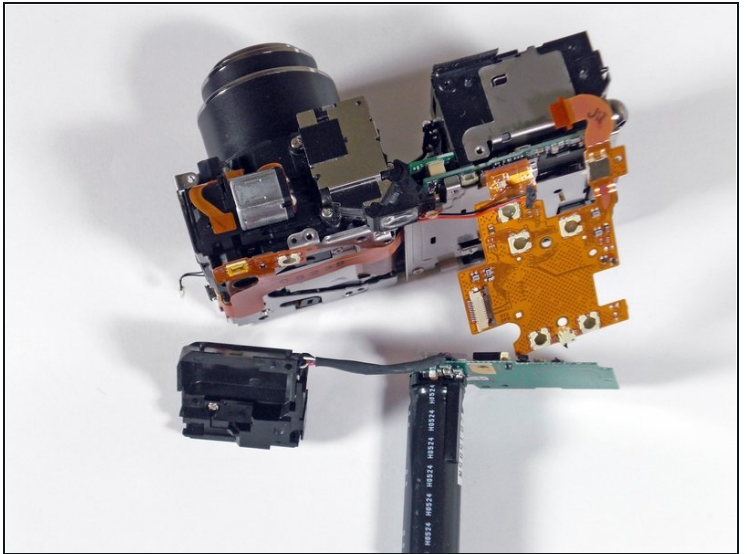
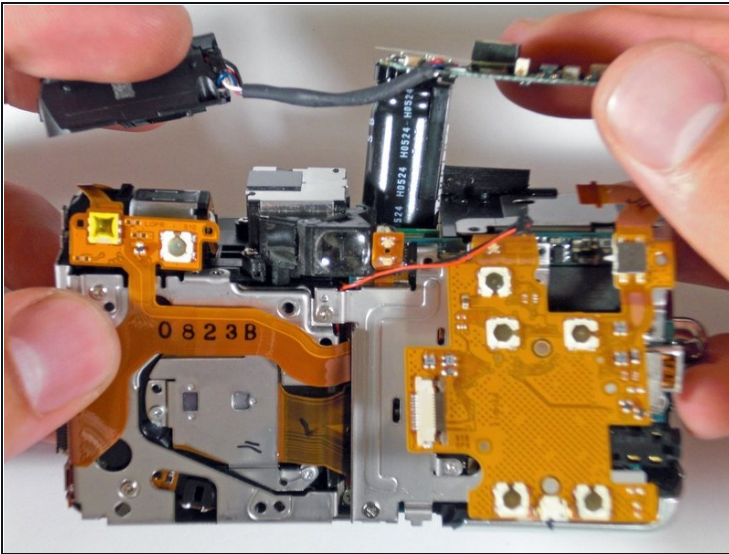
- Remove the cable connection. With a metal spudger, gently pry up.
- Remove the ribbon cable. With a metal spudger, gently lift up the black tab.

## Step 12



- Lift the flash bulb unit upwards from the camera.

## Step 13



- Lift the entire three-part flash assembly from the camera.

To reassemble your device, follow these instructions in reverse order.