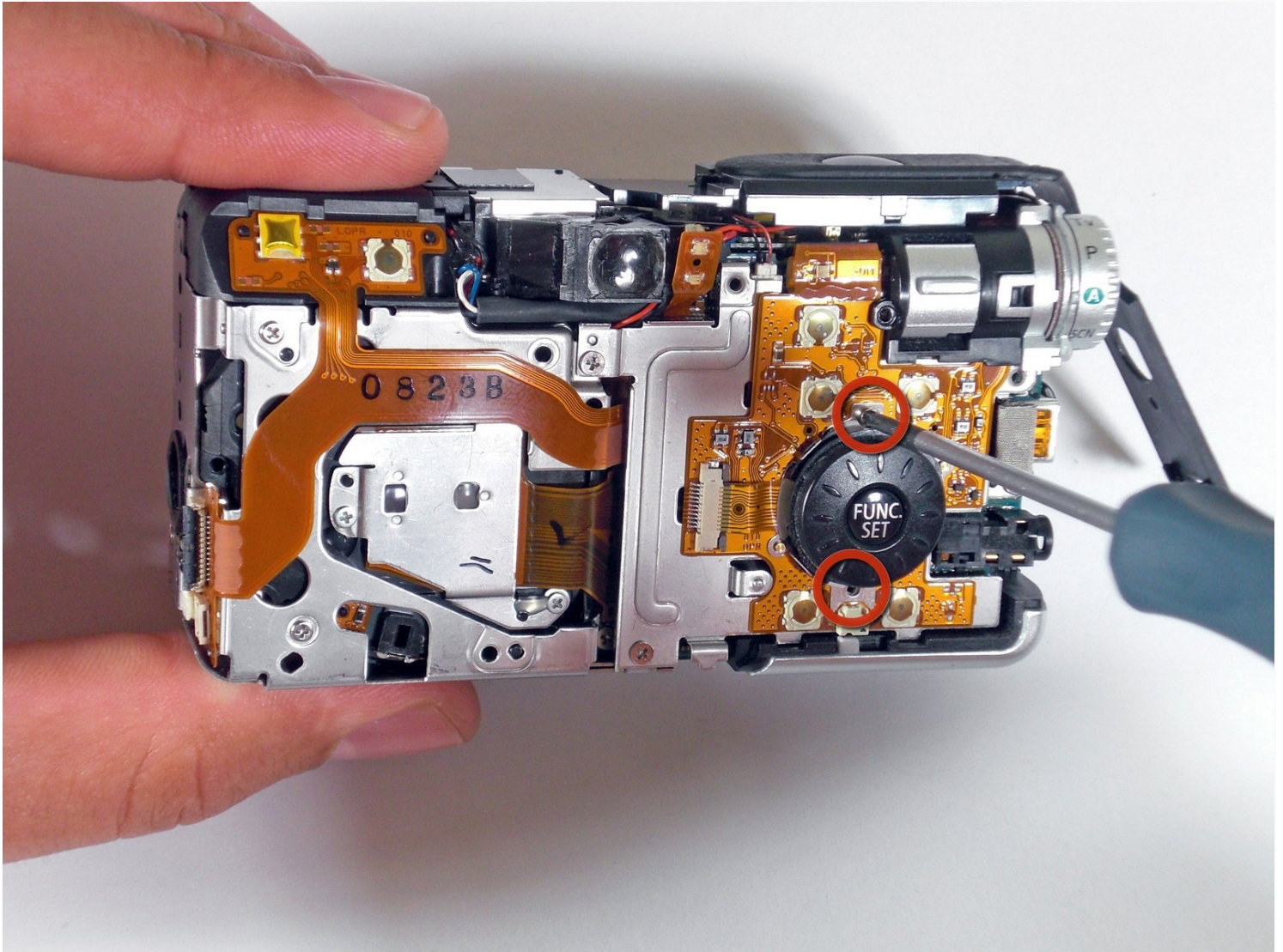




Canon PowerShot S80 Motherboard Replacement

This guide serves to remove and replace the...

Written By: BrettH



INTRODUCTION

This guide serves to remove and replace the motherboard of your Canon PowerShot S80 camera.

TOOLS:

Spudger (1)

Metal Spudger (1)

Phillips #00 Screwdriver (1)

Step 1 — Outer Casing



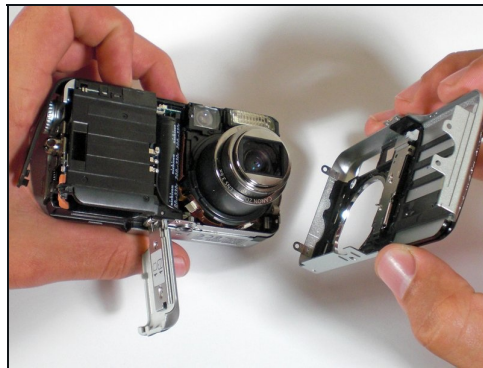
- Remove the knot on the wrist lanyard.
- Remove the battery and the memory card.

Step 2



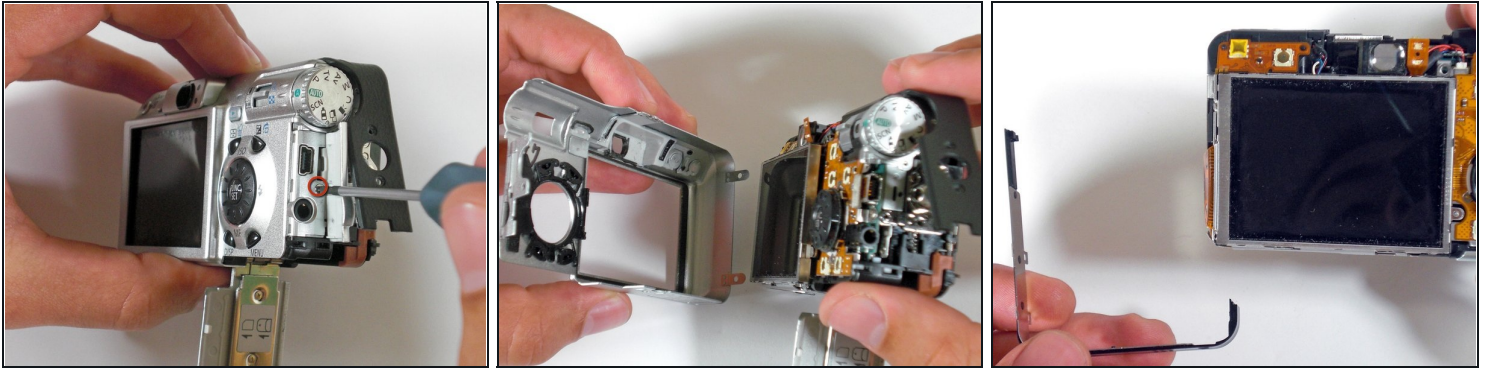
- Begin removing the screws on the bottom of the outer casing.
- Next, remove the rest of the screws from the outer casing.

Step 3



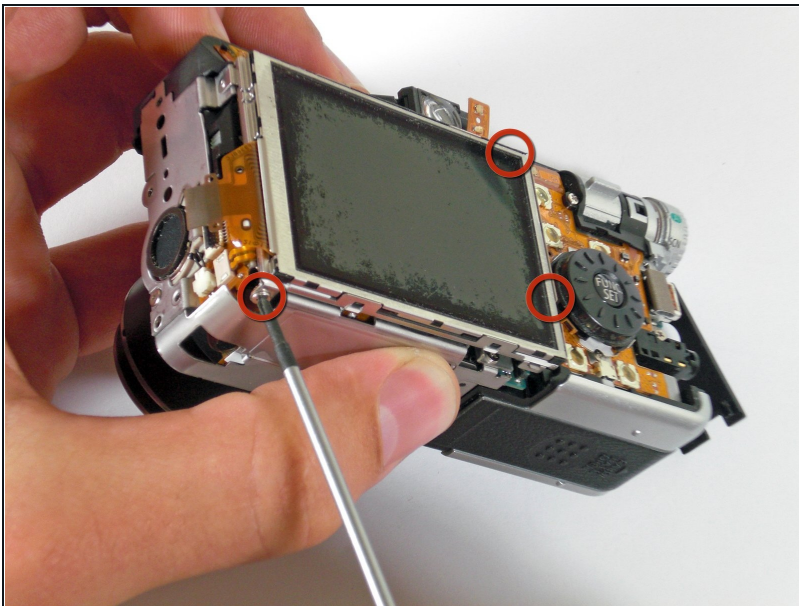
- Gently pull the front cover off of the camera.

Step 4



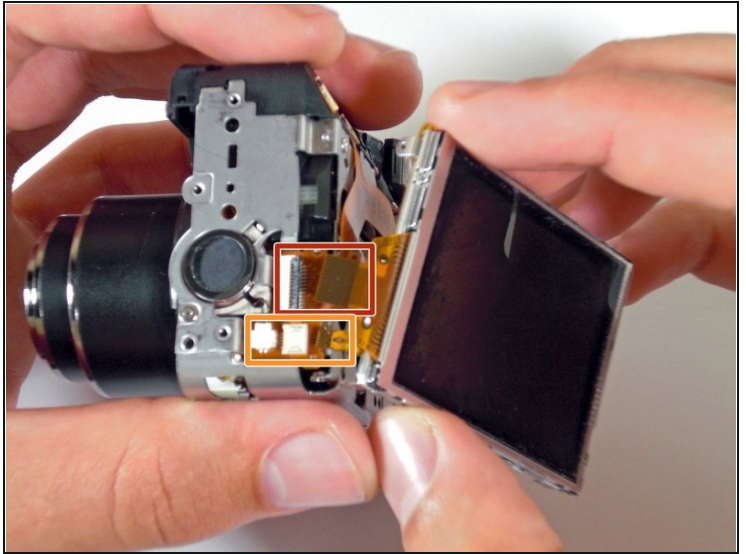
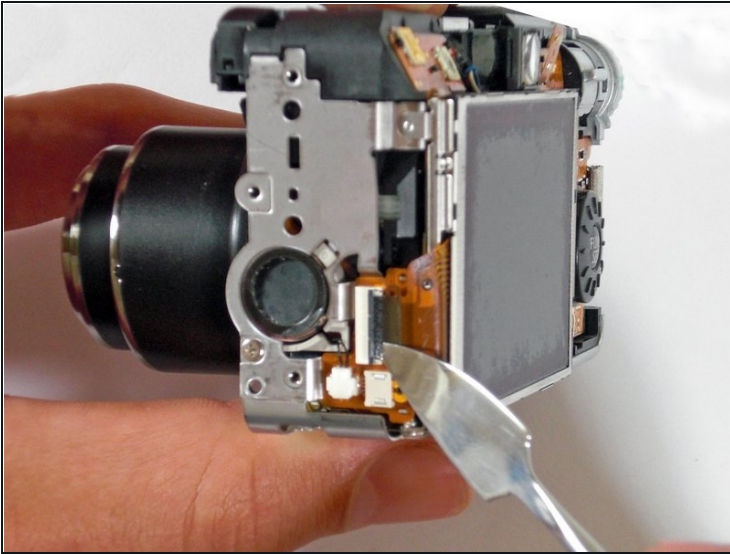
- Open the "A/V Out Digital" cover. Remove the screw inside.
- Gently pull off the back casing.
- Remove the black "L" shaped piece of metal.

Step 5 — LCD Screen



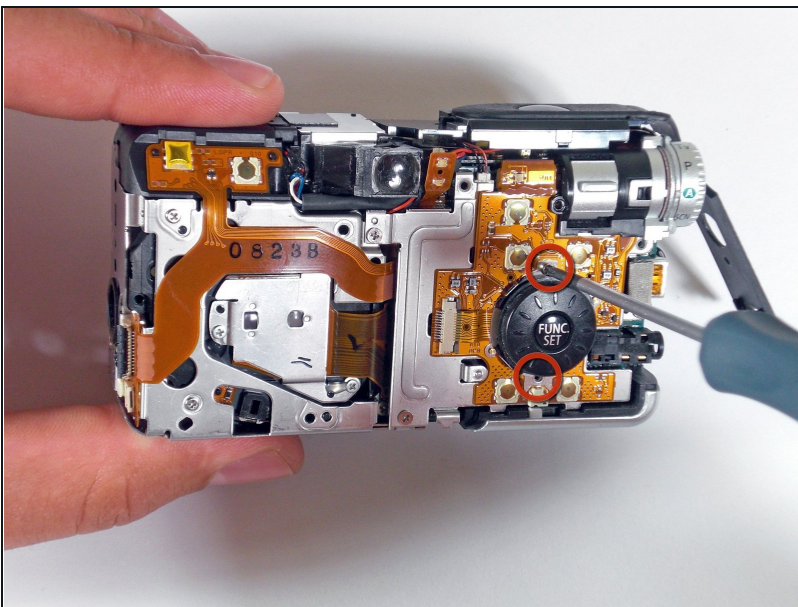
- Remove the three screws that are holding the screen in place. Free the screen from the underlying components.
- ⚠ Be careful with the ribbon wire that is still attached on the left side of the screen.

Step 6



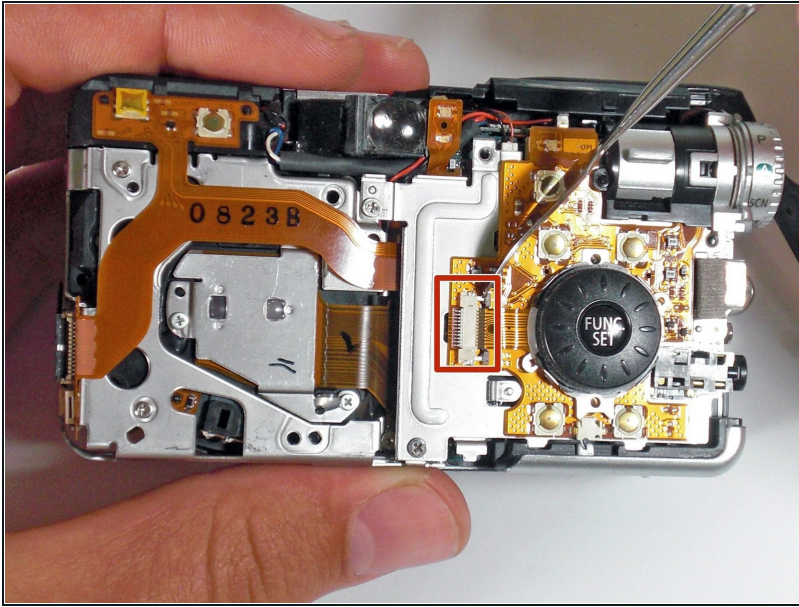
- With the spudger, gently lift the black flap that is holding the wide ribbon cable wire in place.
- Unplug the wide ribbon cable.
- Unplug the narrow ribbon cable to free the LCD screen from the camera body.

Step 7 — Motherboard



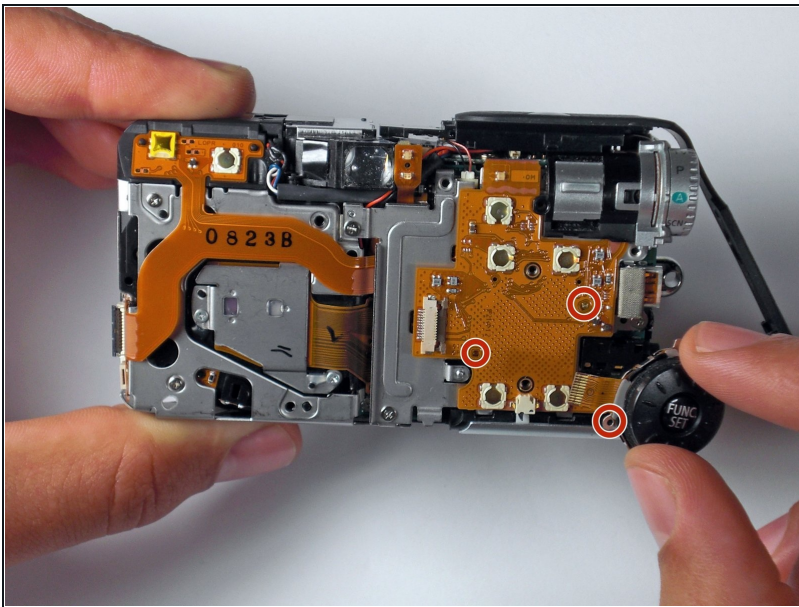
- Remove the screws holding down the function set button.

Step 8



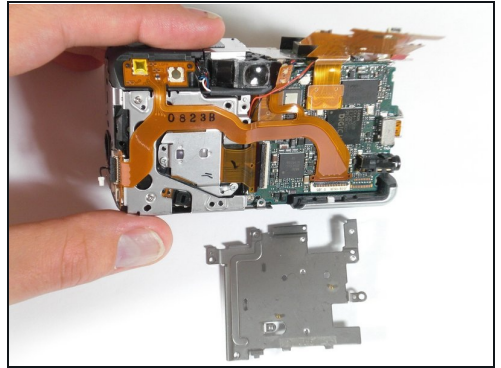
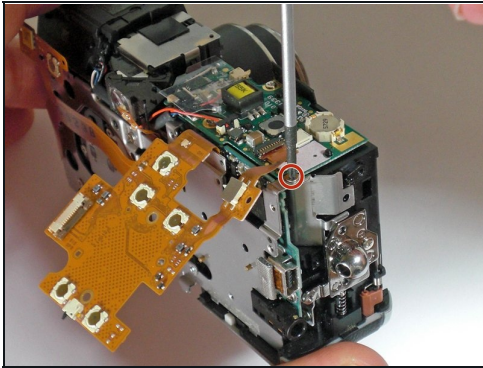
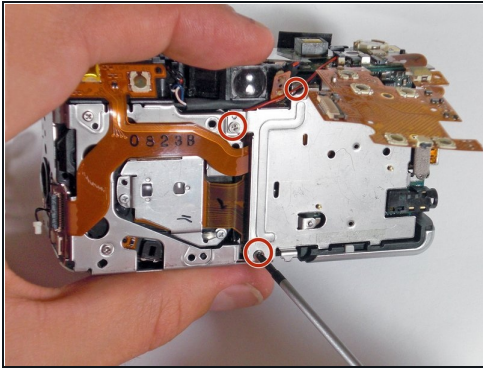
- Gently pry up the tab with a metal spudger and remove the ribbon cable.

Step 9



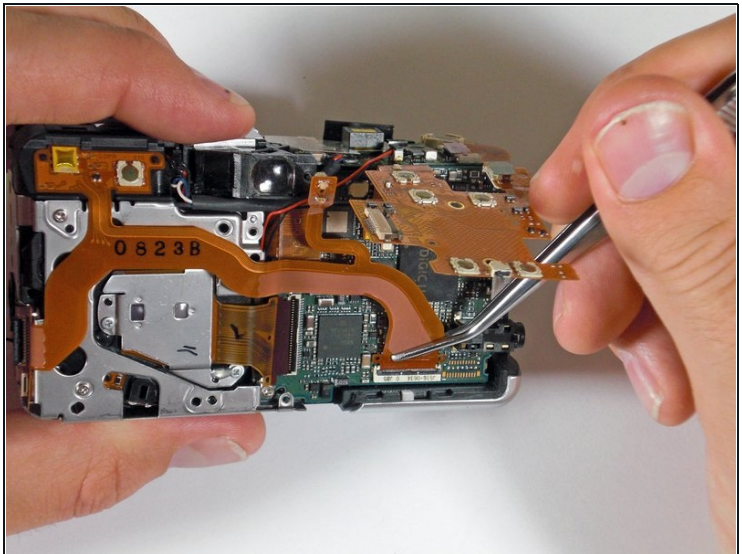
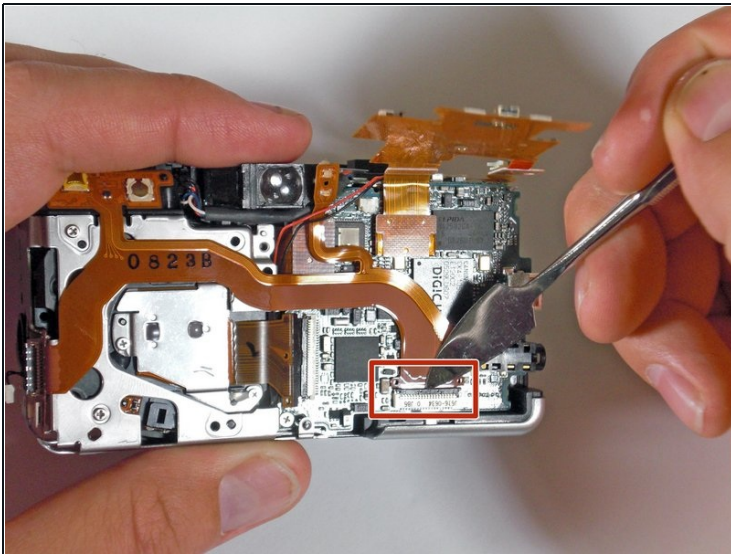
- Be mindful of the pins as you lift up and remove the function/set button.

Step 10



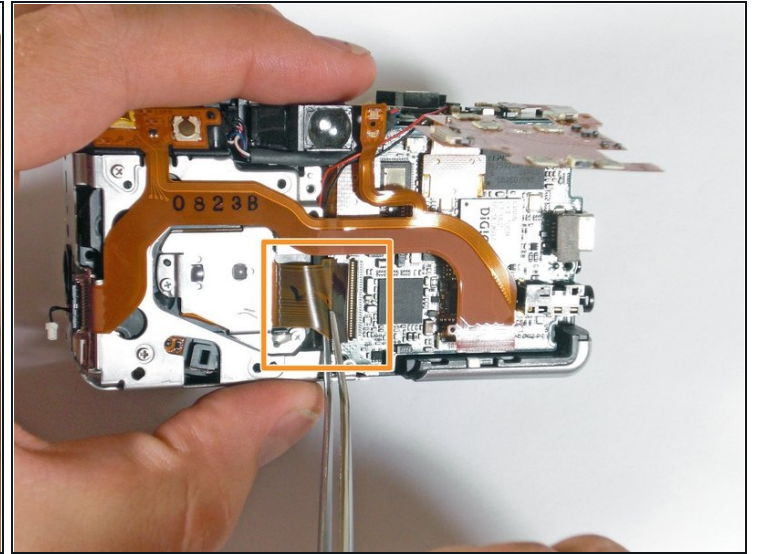
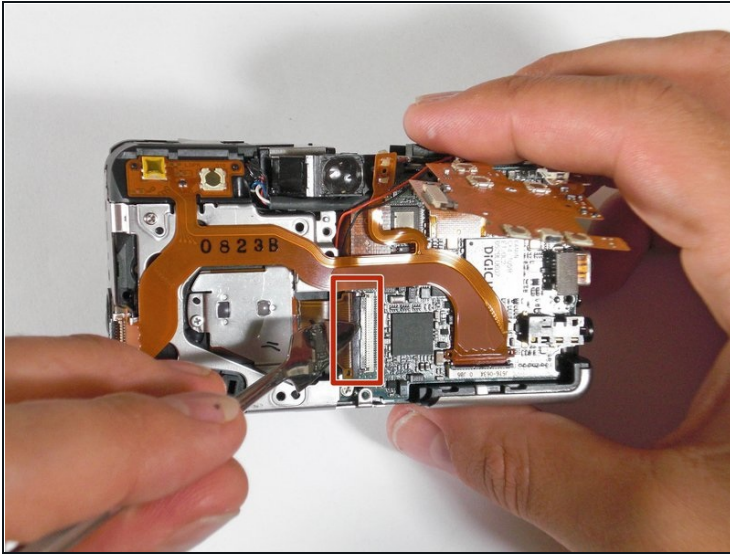
- Remove the screws from the metal plate.
- Gently remove the metal plate.

Step 11



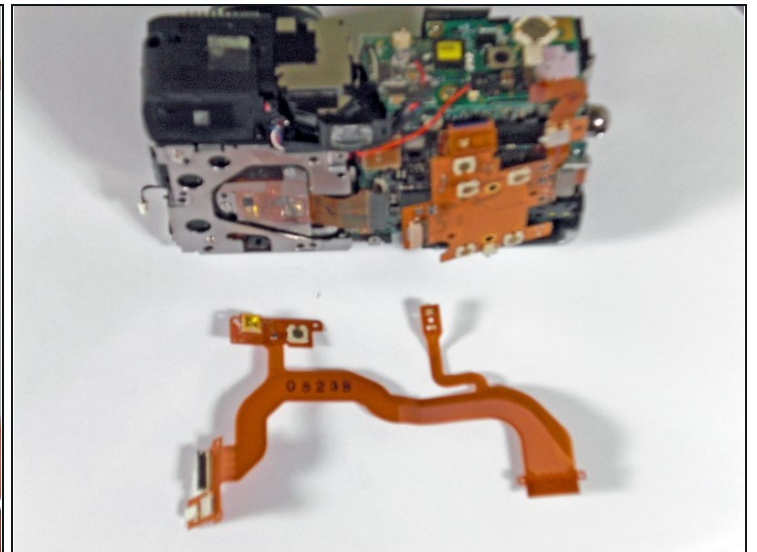
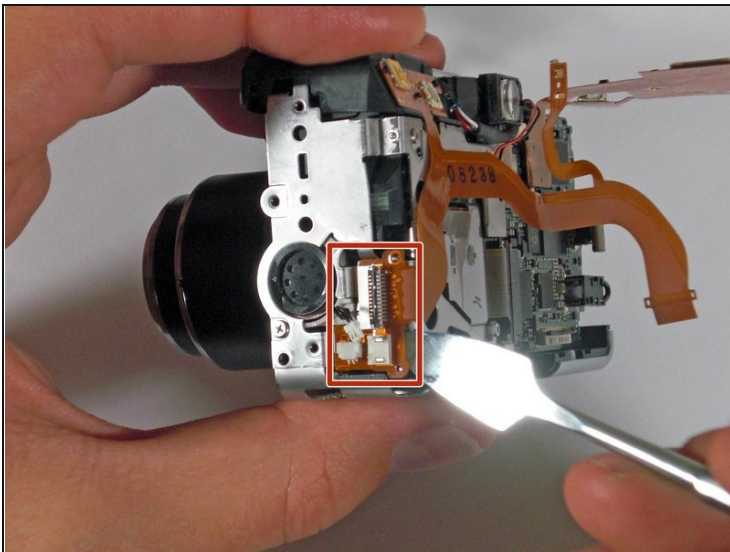
- Lift the tab connecting the ribbon cable and detach.

Step 12



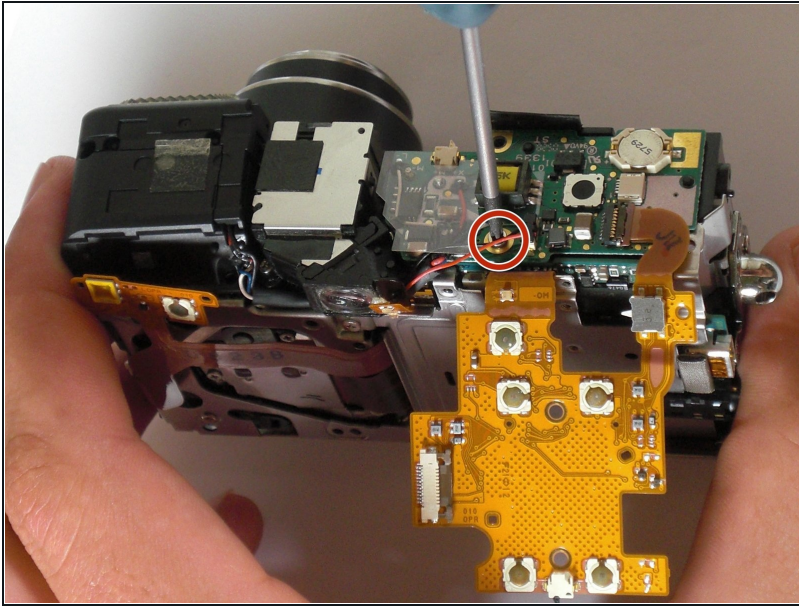
- Use a spudger to lift up the ribbon cable tab.
- Detach the ribbon cable.

Step 13



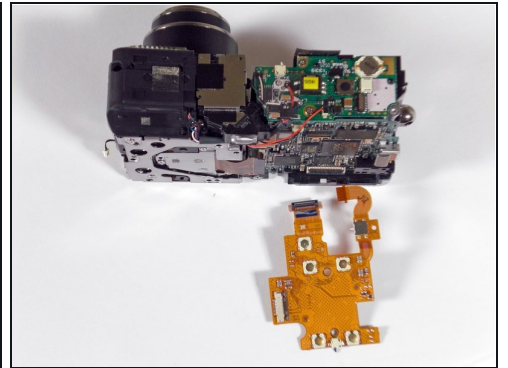
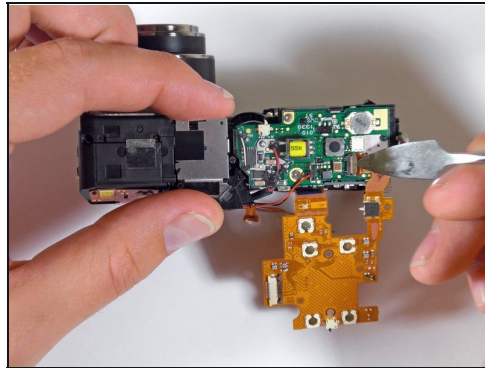
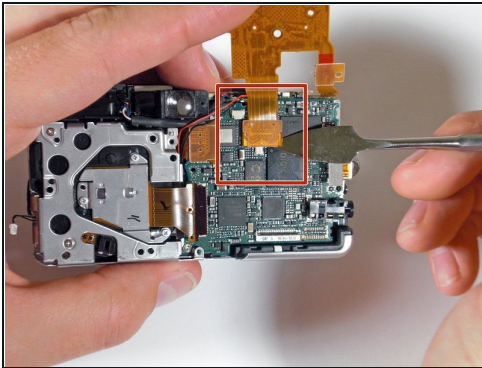
- Gently remove the entire ribbon cable connection to release the ribbon cable from the camera.

Step 14



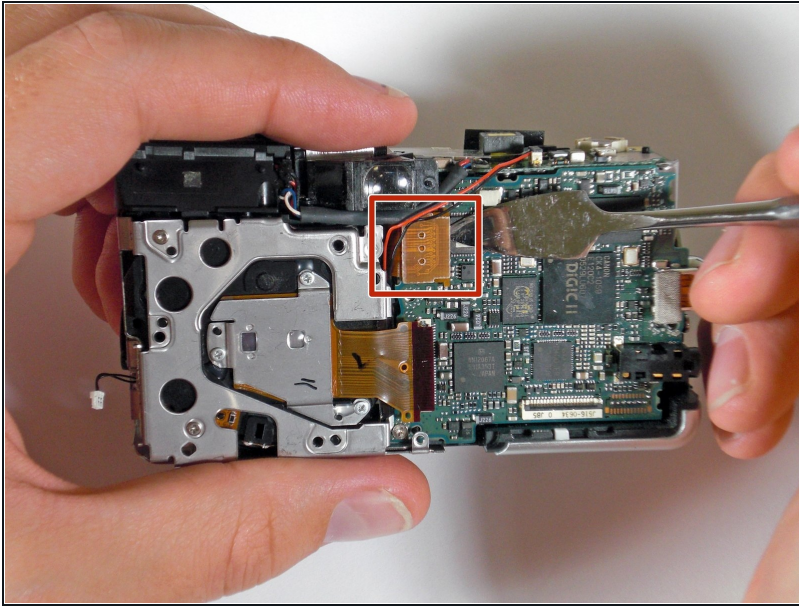
- Unscrew the circuit board from the flash unit.

Step 15



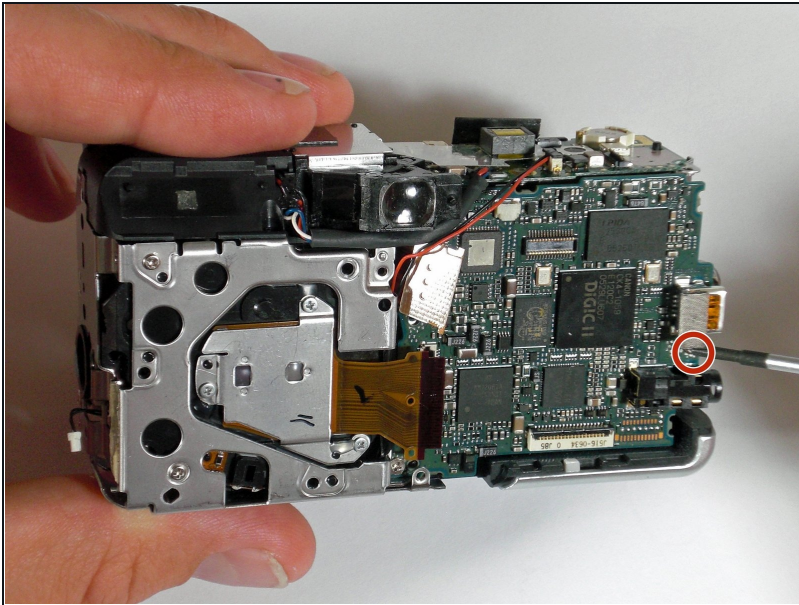
- Pry up the ribbon cable connection and remove it from the camera.
- Lift the ribbon cable tab and completely detach the cable from the camera.

Step 16



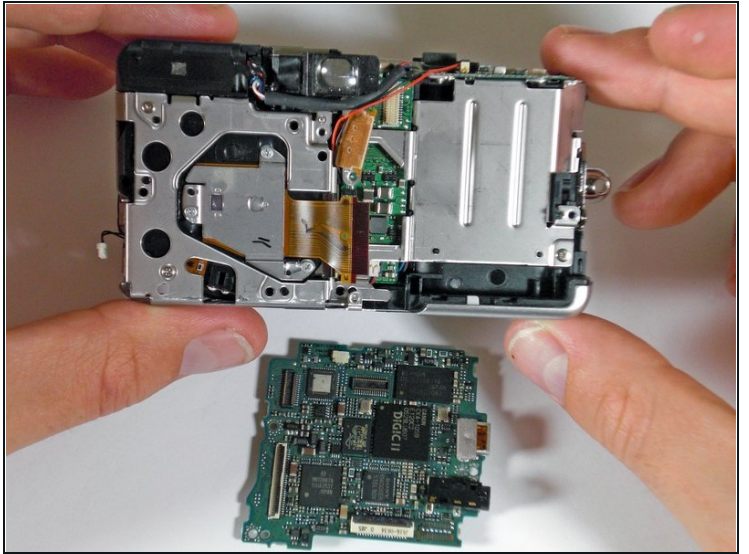
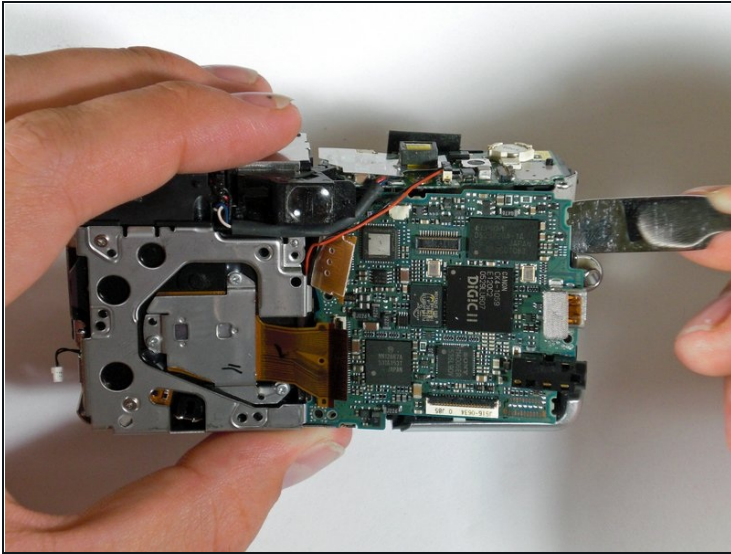
- Pry up the connection, being mindful of the light adhesive.

Step 17



- Remove the last screw holding the motherboard to the main body.

Step 18



- Use a spudger to gently lift the motherboard from the camera.

To reassemble your device, follow these instructions in reverse order.