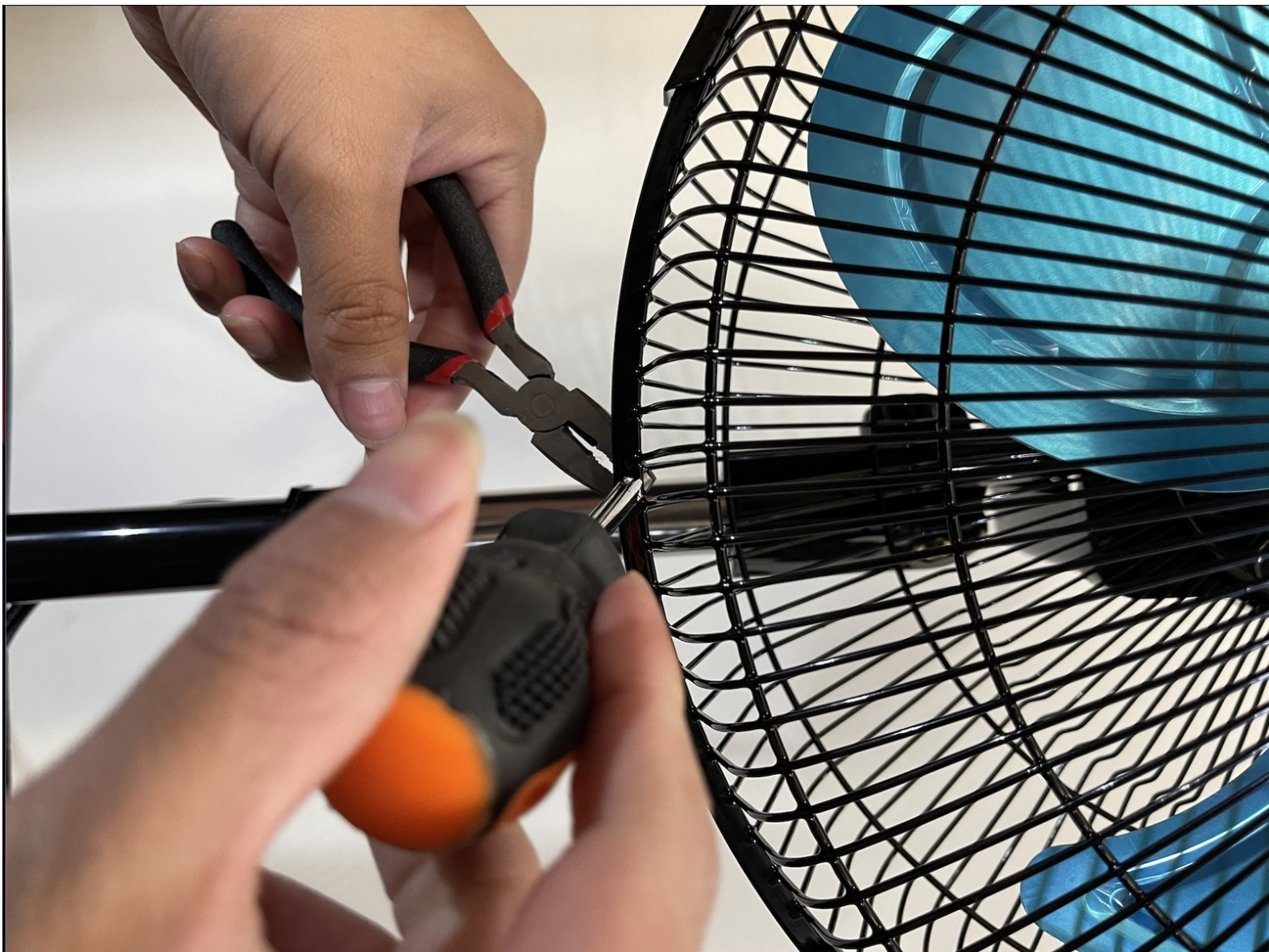




How to Repair a Loose Impress Mighty Mite Fan

Fix a loose Mighty Mite Fan IM-714B by tightening the big screw knob that holds it together. This knob becomes loose over the course of its constant usage.

Written By: Alexis S



INTRODUCTION

Your Impress Mighty Mite oscillating fan (more specifically known as Impress Mighty Mite Fan (model# IM-714B)) might be making a lot of noise due to it becoming loose, this can be annoying when you most need your fan in days of extreme heat. This is due to a big knob that holds the fan unscrewing itself due to its consistent usage. This knob needs to be reached by disassembling the fan in order to tighten it. To do this procedure not much experience is needed just a good amount of patience, an ability to follow instructions, and knowing how to handle a screwdriver.

Make sure the fan is not connected to the power before commencing this procedure.



TOOLS:

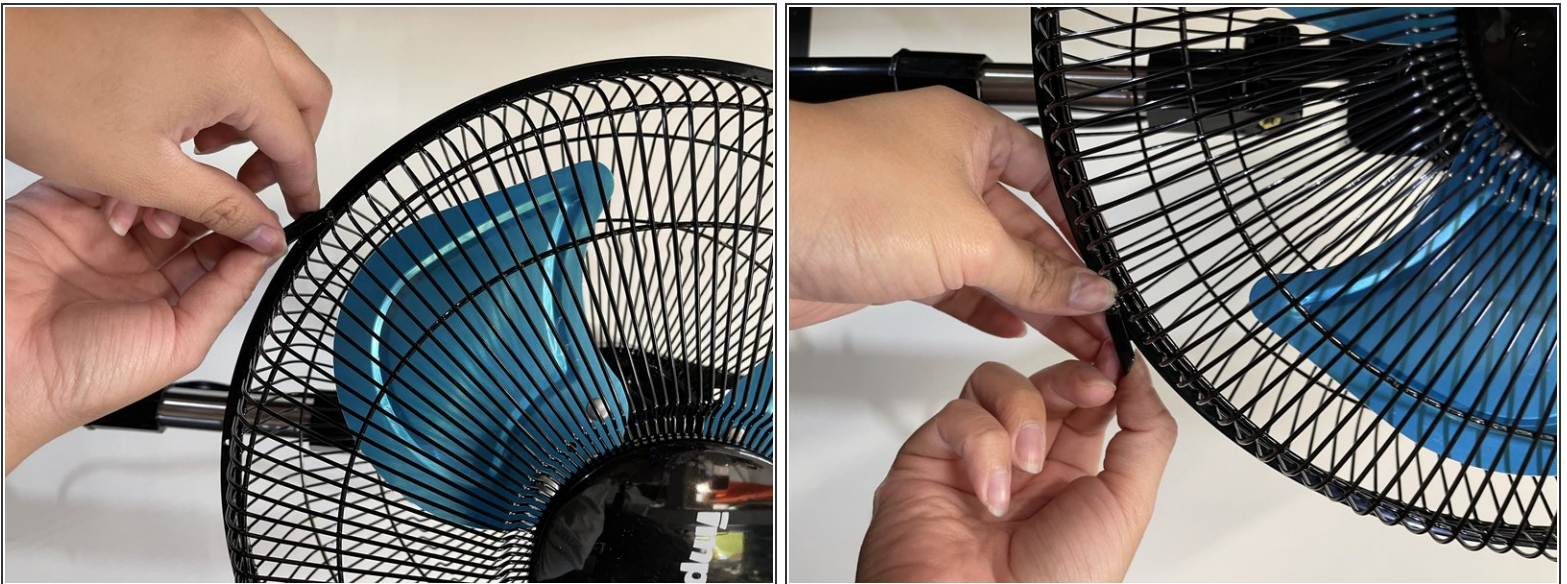
- [Phillips #2 Screwdriver](#) (1)
 - [Large Needle Nose Pliers](#) (1)
-

Step 1 — How to Repair a Loose Impress Mighty Mite Fan



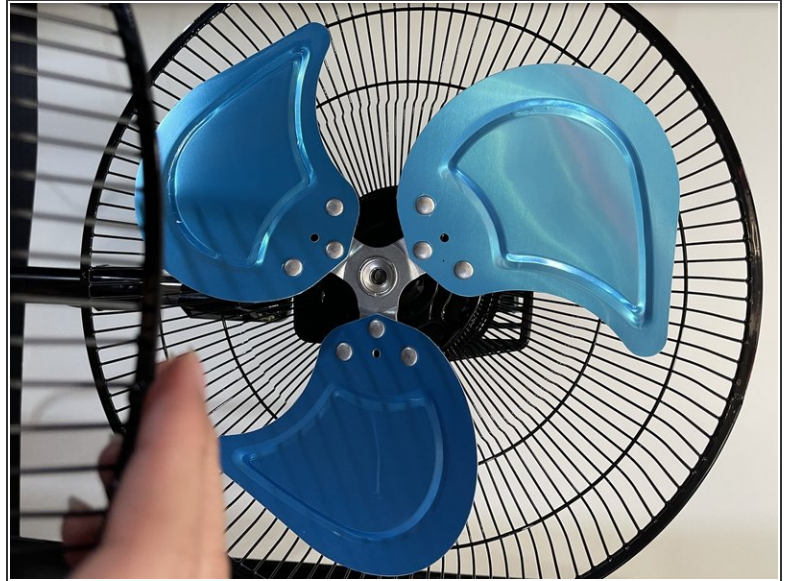
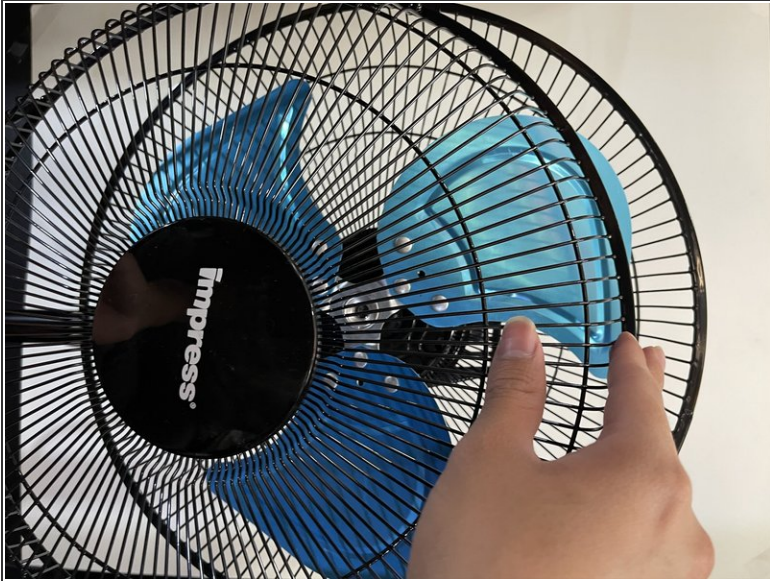
- Remove the single 0.8 mm screw using a Phillips #2 screwdriver. Use a pair of pliers to hold the hexagon nut so that it makes the process easier.

Step 2



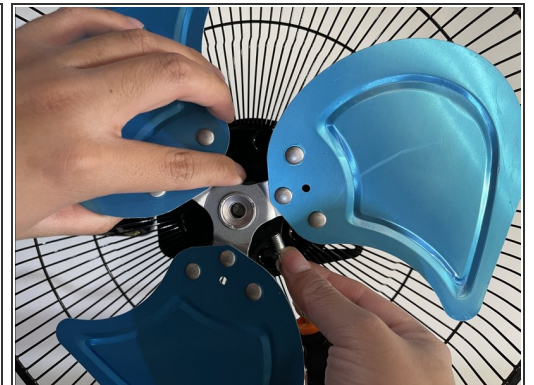
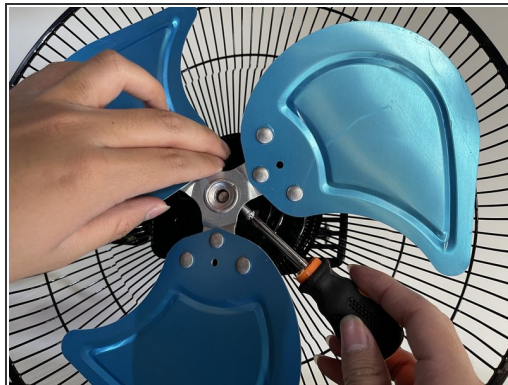
- Disconnect the hinges that hold the fan covers together.

Step 3



- Remove the front cover and set it aside.

Step 4



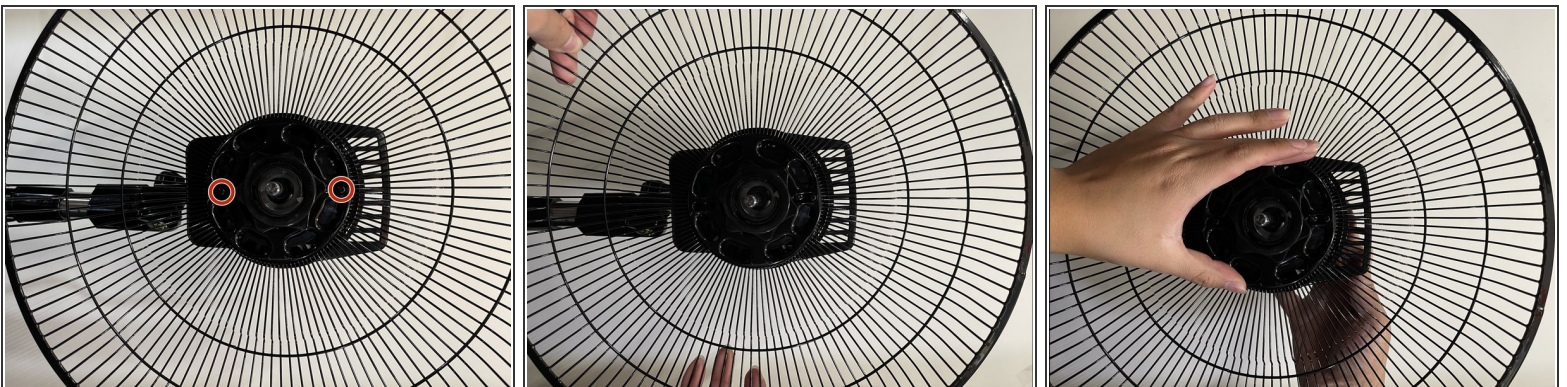
- Use the Phillips #2 screwdriver to remove the 1.4 mm screw that holds the fan blades to the fan.

Step 5



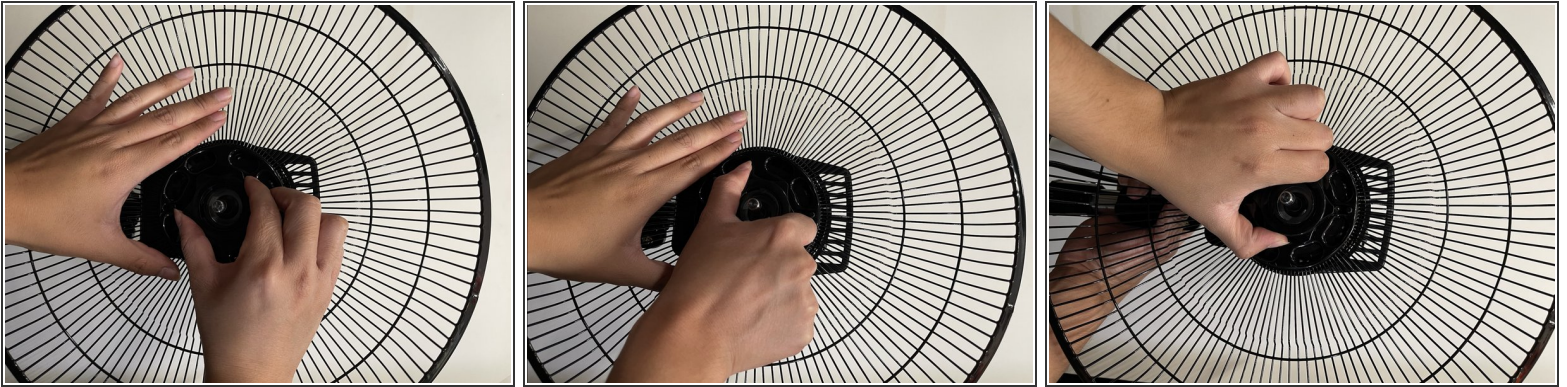
- Remove the fan blades and set them aside.

Step 6




- Position the fans back cover correctly aligned with its placeholders.
- The placeholders are small and black which are not too visible on camera. There are two placeholders and they are shaped like cylinders.

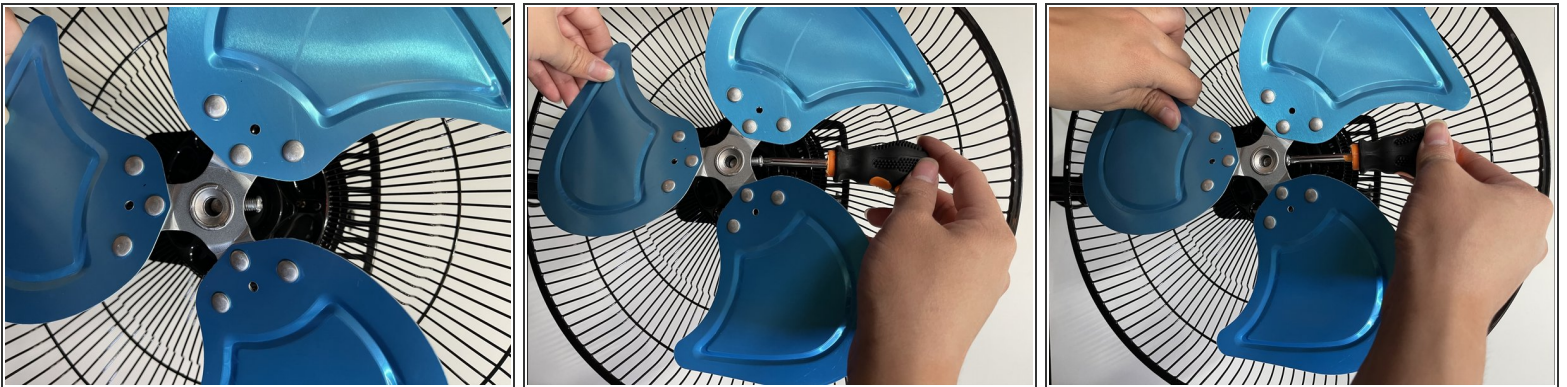
Step 7



- Twist the big knob clockwise, that holds the back cover, until it is tight and you can no longer twist.

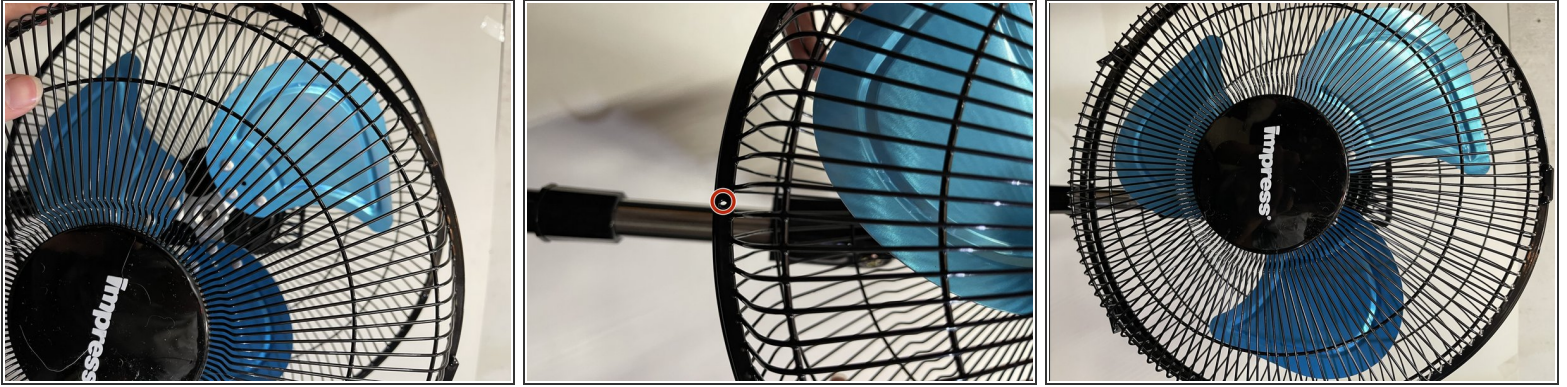
 The back cover must be correctly placed on its holders before this step.

Step 8



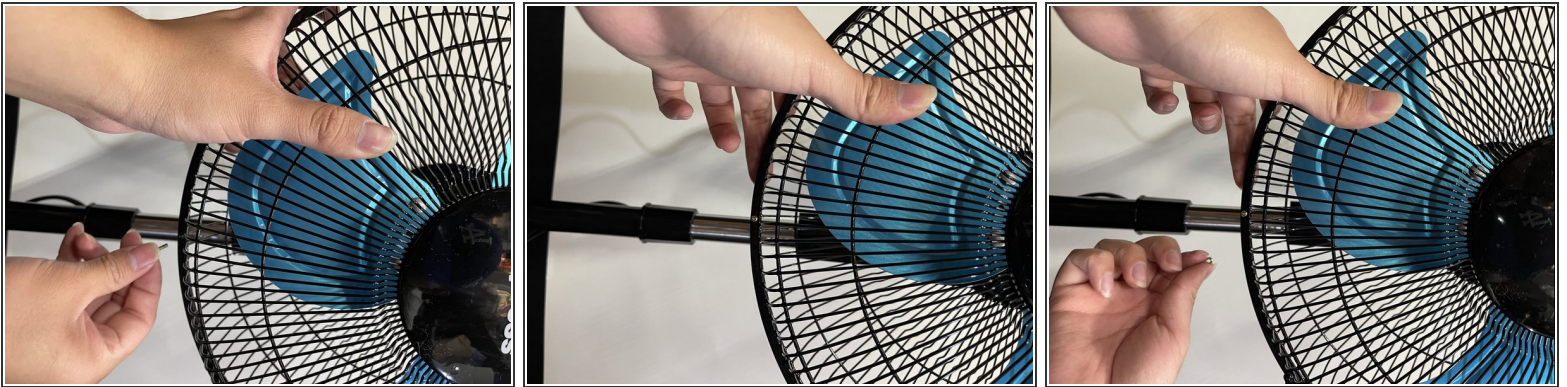
- Place the fan blades back onto the fan and start screwing the 1.4 mm cross head screw into the clockwise direction until it is flat and can no longer screw.

Step 9



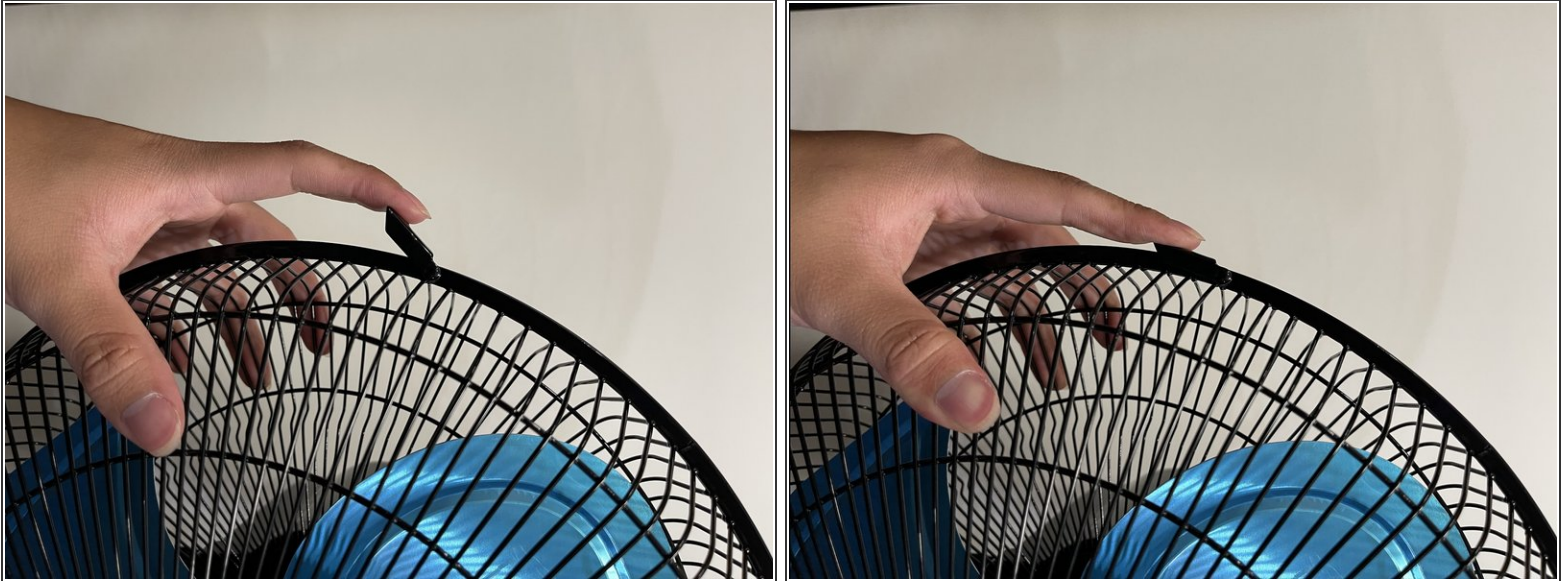
- Place the front cover back onto the fan with the punch-holes aligned so that the small bolt can go through.
- These punch-holes should be aligned and you should be able to see through it.

Step 10



- Place the .8 mm cross head screw back inside the punch-hole and start screwing the hexagon nut by hand so that this process is easier.
- ☑ Do not tighten this too much as you might need to repeat the whole process in the future of your fans usage.

Step 11



- Close the hinges so that the covers are joined back together.

To repeat the process start from step 1.