



2003-2007 Honda Accord Headlight Bulb Replacement

This guide will show you the process of removing and replacing a dead headlight bulb in a 2003-2007 Honda Accord.

Written By: Brooklyn Jarvis



INTRODUCTION

The purpose of this guide is to show how to replace the standard headlight bulb of a **Honda Accord**. This guide is specifically for **Accords** manufactured in-between **2003 and 2007**. Newer or older models may be similar, but not exactly the same. Avoid touching the glass of the **headlight bulb** as oil and dirt on the glass can hamper its performance and lifespan.



TOOLS:

- [Adjustable Wrench](#) (1)
- [WD-40](#) (1)



PARTS:

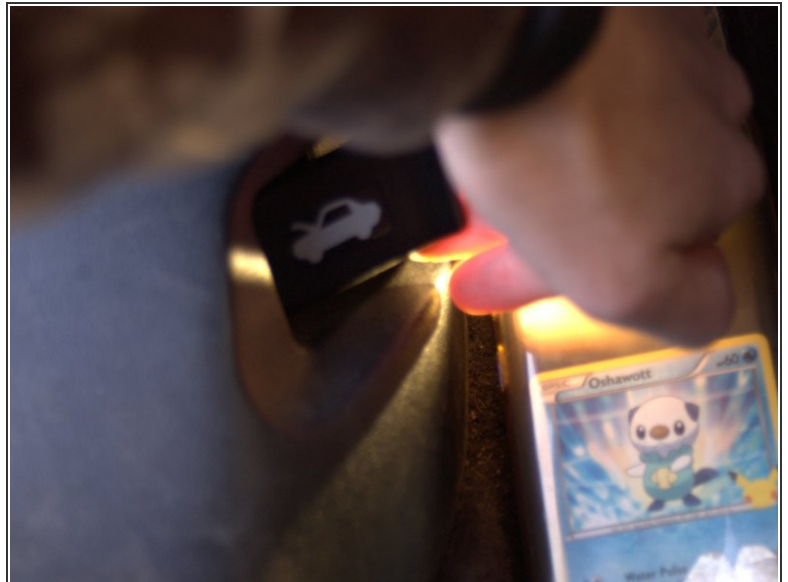
- [9006 Halogen Headlight Bulb 2 Pack](#) (1)

Step 1 — Headlight Bulb



- Enter your vehicle from the driver's side, and locate the hood lever (in the footwell) near the far left side of the vehicle.

Step 2



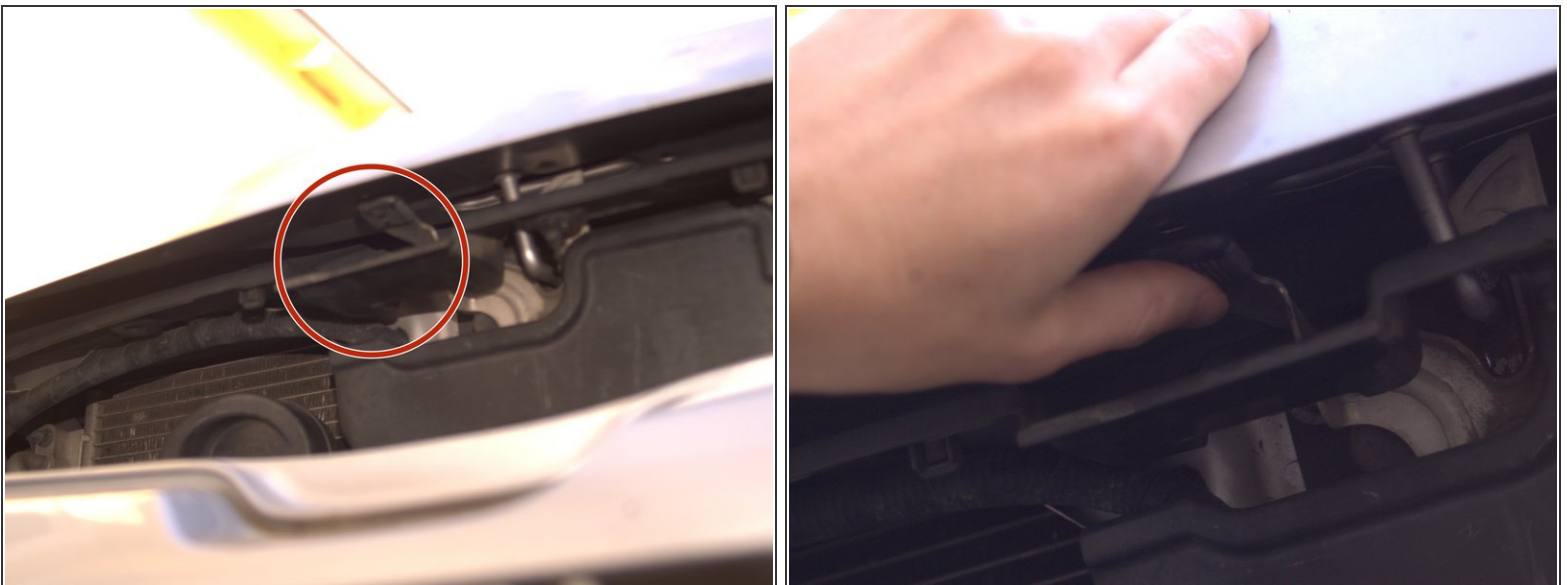
- Pull the hood lever towards you in order to pop the hood of your vehicle.

Step 3



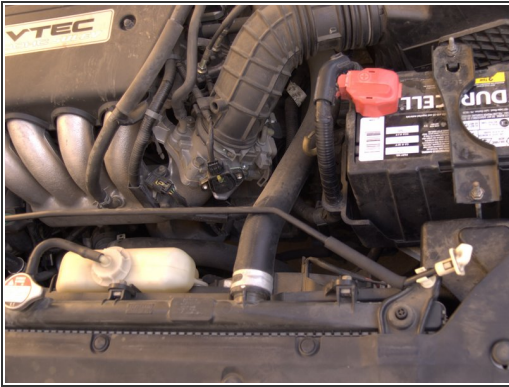
- Reach underneath the front middle of the hood to open the hood.

Step 4



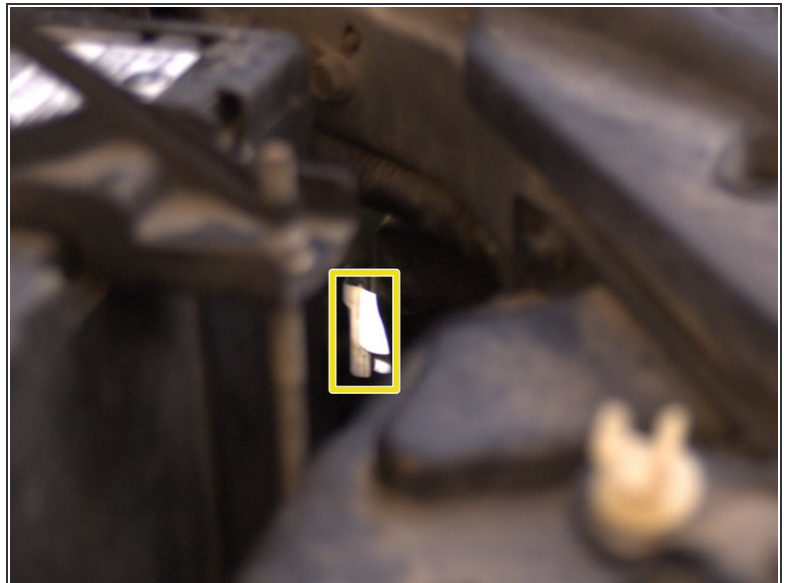
- Press upwards on the lever on the underside of the hood in order to fully open the hood.

Step 5



- Once the hood is lifted, secure the hood by lifting up the hood prop.

Step 6




- ⓘ I attempted to highlight the location of the plug for the bulb as best as possible, so you can at least know what area we are attempting to access.

- The bright white object is the plug.

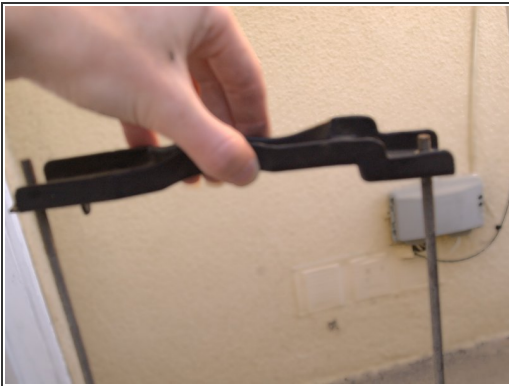
Step 7



 In order to replace the bulb on the driver's side, we need to remove the battery.

- Use the adjustable wrench to loosen the two hex nuts located on either side.
-  Don't fully unscrew the nuts holding the mount to the battery.

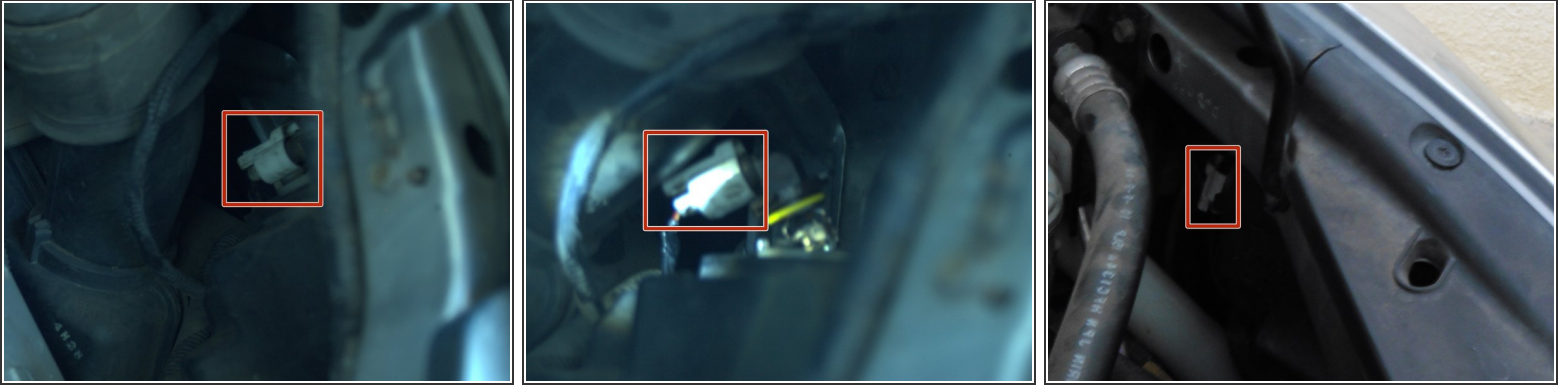
Step 8



- Once you have removed the mount, carefully lift the battery out of the vehicle.

 The car battery is much heavier than it looks and is very easy to underestimate. Proceed carefully.

Step 9

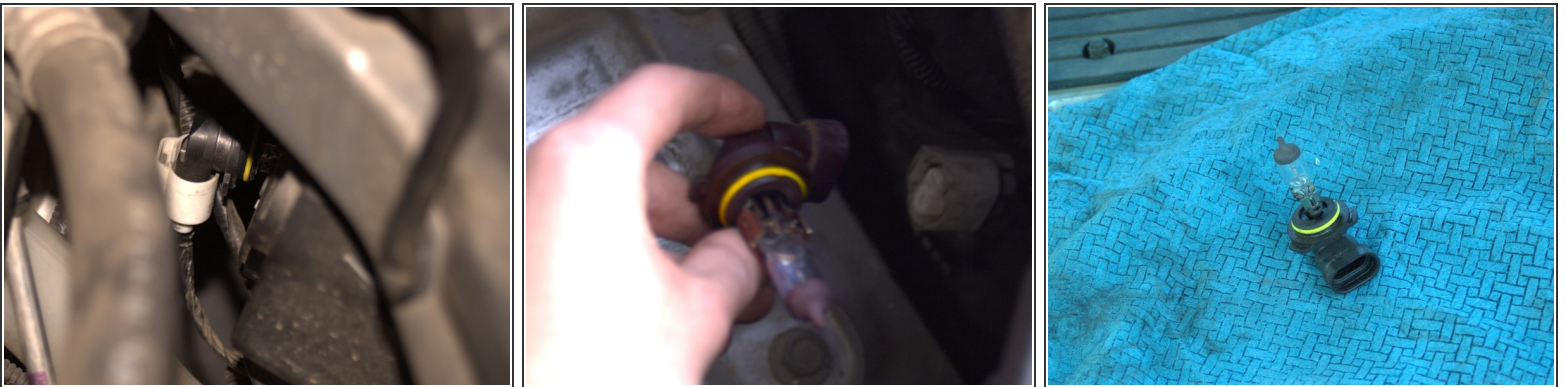


- Grab the plug and twist it counterclockwise to loosen it. It should pop out fairly easily.

⚠ If it does not come out easily, do not force it. The plastic will break.

- ⓘ Attempt to spray the **compressed air** in the area of the plug. Sprayed in the crevice where it turns, this should allow it to move easier.

Step 10



- Pull the bulb out from the vehicle.

- ⓘ Avoid touching the glass of the **bulb** as oil and dirt on the glass can hamper its performance and lifespan.

To reassemble your device, follow these instructions, starting from step 12, until step 5, in reverse order.