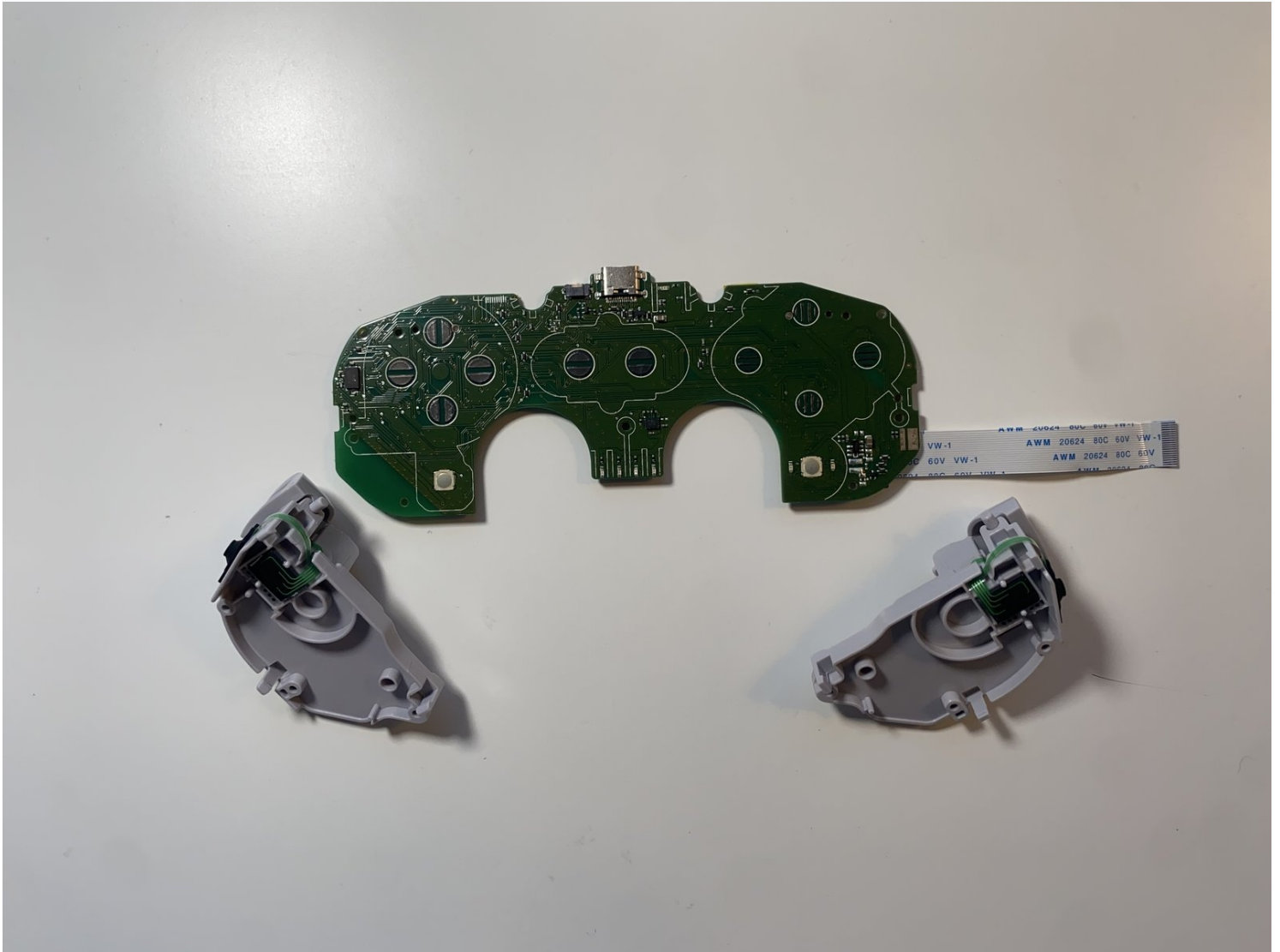




# 8BitDo SN30 Pro+ Controller Triggers Replacement

This guide is used for the replacement the...

Written By: Brian W



# INTRODUCTION

This guide is used for the replacement the triggers on your 8BitDo SN30 Pro+ controller.  
This guide is also used for the replacement Conductive Rubber Pads: L1, L2, R1, R2.

---

## TOOLS:

[T6 Torx Screwdriver](#) (1)

[Tweezers](#) (1)

[Phillips #1 Screwdriver](#) (1)

---

## Step 1 — Remove Battery



- Place the controller face down.
- Remove the battery cover.
- Remove rechargeable battery or AA batteries.

## Step 2 — Remove Trigger Buttons



- Remove L2 and R2 trigger buttons by pushing them away from the grips.

## Step 3 — Remove Screws



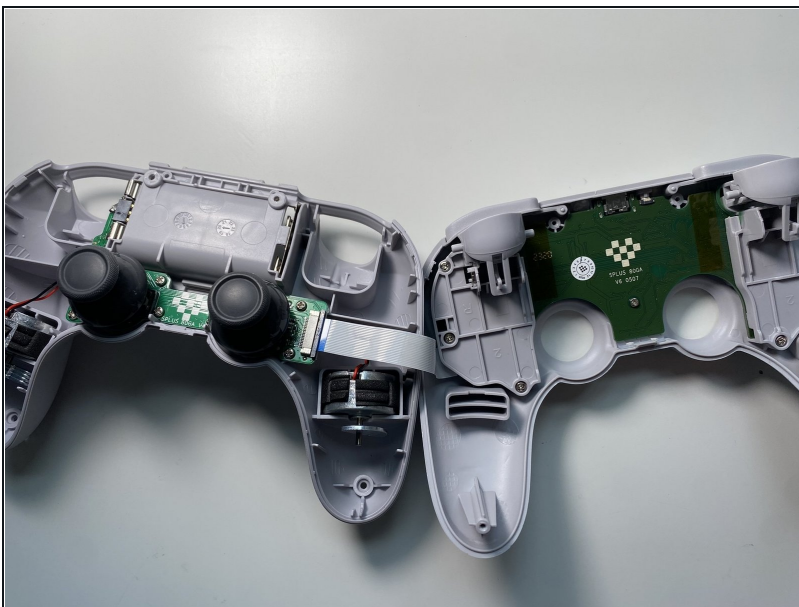
- Use [Tweezers](#) to uncover two screws under the label in the battery compartment.
- Use a T6 screwdriver to remove the four 7.3 mm screws securing the rear cover.

## Step 4 — Unclip Covers



- At the end of each grip, pry apart the covers.
- Use fingernail or opening pick to undo the two top clips.
  - One clip next to L button.
  - One clip next to R button
- Undo the final clip between the joysticks.

## Step 5 — Separate Covers



- Carefully move the rear cover away and from the front cover. Place it to the left.

**⚠ Do not completely separate. The two halves are still attached via a white ribbon cable.**



## Step 6 — Remove Ribbon Cable



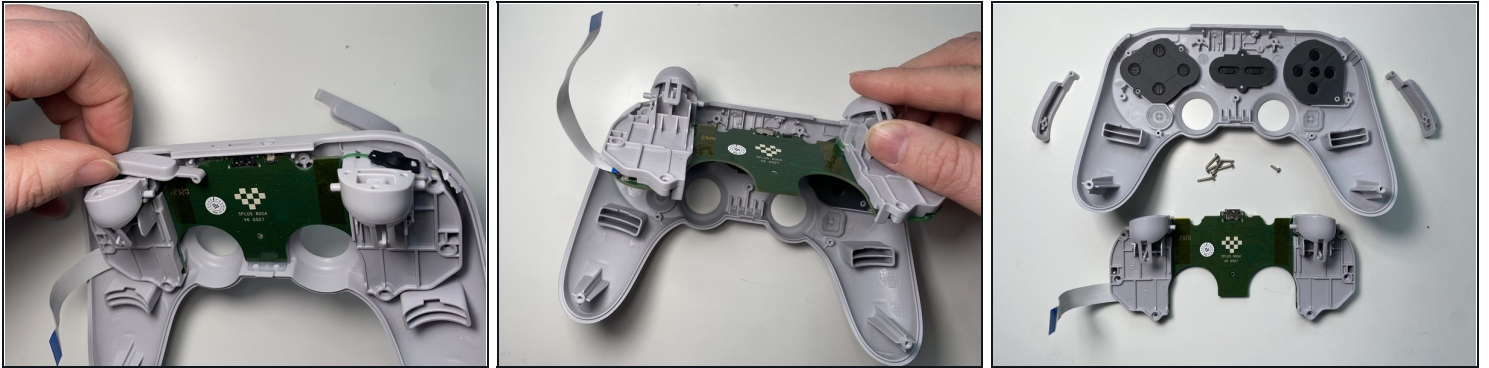
- Unlock the ribbon cable by push open the black plastic tab.
  - ① The tab will slide about 1.5mm
- Pull the ribbon cable out of the connector in the direction of the cable.

## Step 7 — Remove Screws



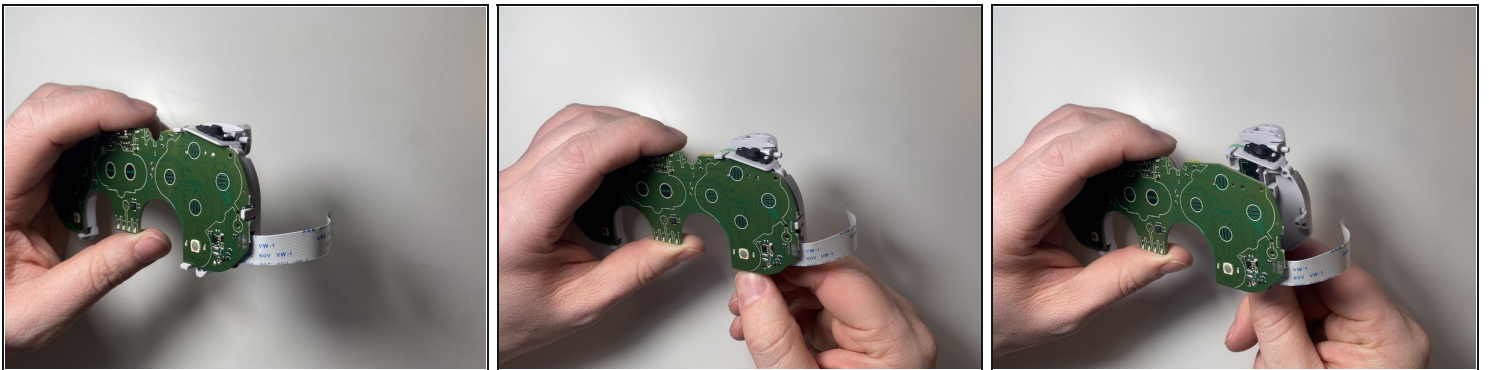
- Use a Phillips screwdriver to remove the seven screws securing the main circuit board.
  - Six 10.1mm screws
  - One 5.8mm screws

## Step 8 — Separate Main Board



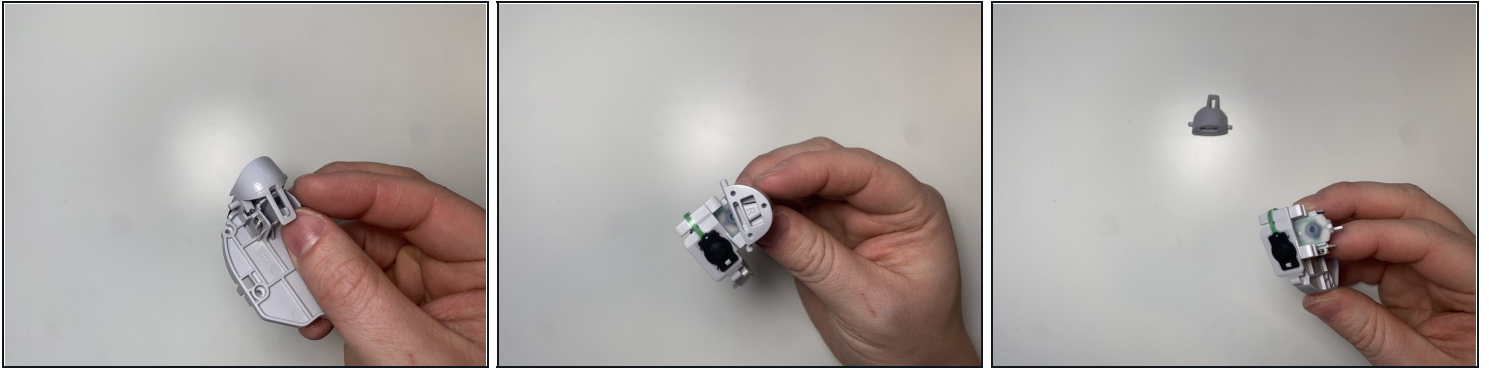
- Slide the R buttons up and off its peg.
- Slide the L button up and off its peg.
- Remove the main board by rotating it towards the USB-C port. Then lift it out.

## Step 9 — Remove Trigger Assembly



- Release the three clips holding the trigger assembly to the main board.
- Repeat with the other side.

## Step 10 — Remove Trigger



- Bend the plastic tab over the locking hook. It helps to push the trigger back slightly, with your other hand.
- Gently pry the each side of the trigger out of the round clips.
- Both conductive pads are now accessible.

---

To reassemble your device, follow these instructions in reverse order.