



# Lenovo IdeaPad Flex 5-1470 Display Replacement

Written By: Randall Welton





## TOOLS:

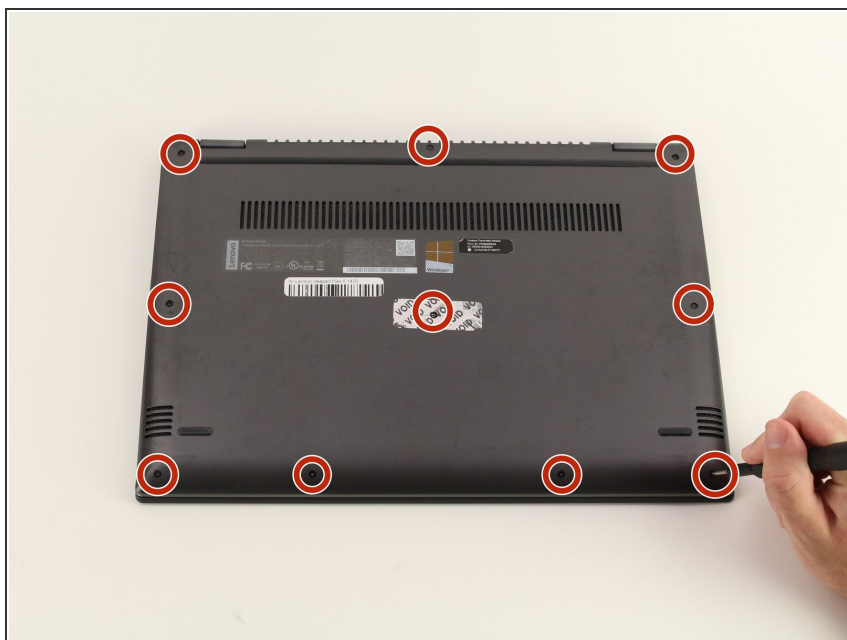
- [iFixit Opening Tool](#) (1)
- [Phillips #00 Screwdriver](#) (1)
- [iOpener](#) (1)
- [Jimmy](#) (1)
- [iFixit Opening Picks \(Set of 6\)](#) (1)



## PARTS:

- [Lenovo Yoga 520-14IKB/Flex 5-1470 LCD Panel](#) (1)

## Step 1 — Back Panel



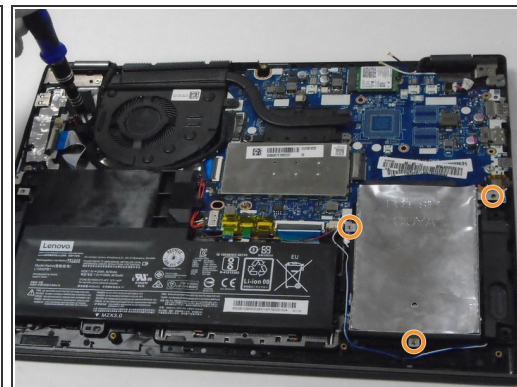
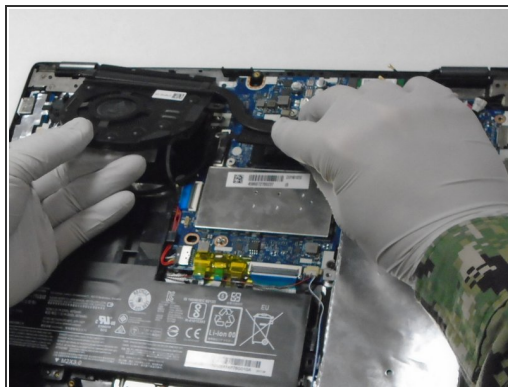
- Remove all ten 6.6 mm screws with a Phillips #00 screwdriver.

## Step 2



- Use the plastic opening tool to lift up and remove the casing.

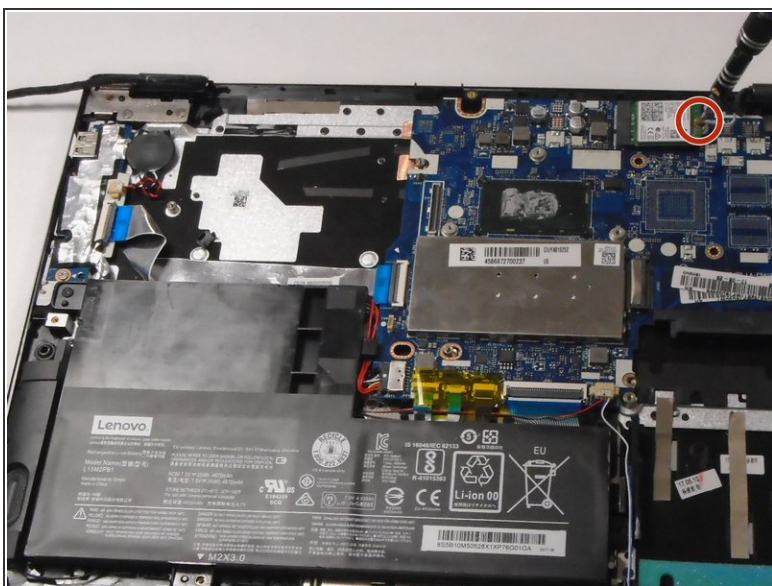
## Step 3 — Motherboard



- Use a Phillips #00 screwdriver to remove the three screws securing the fan.
- Lift the fan up and out.
- Use a Phillips #00 screwdriver to remove the three screws securing the hard drive.
- Lift the hard drive up and out.

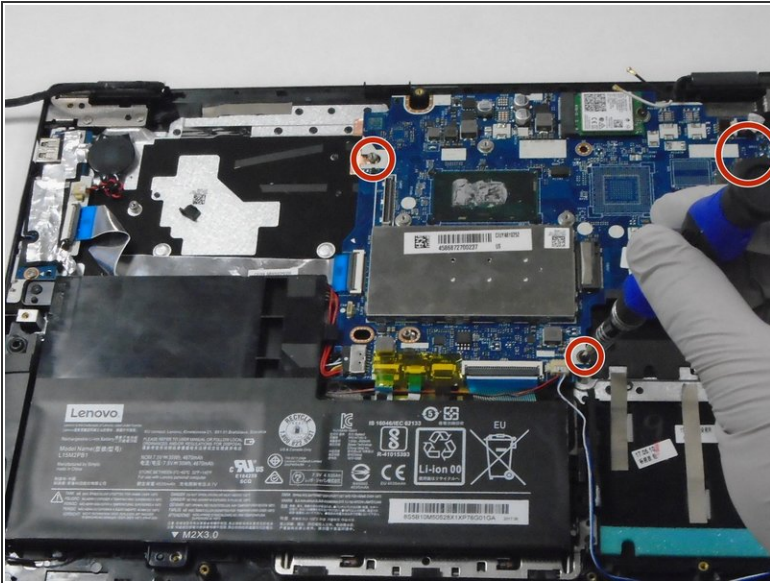


## Step 4



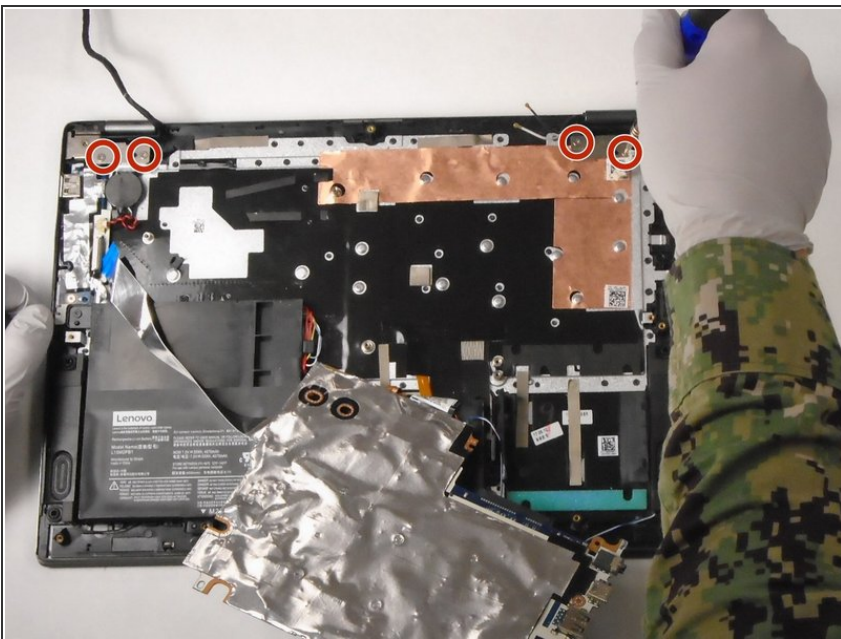
- Use a Phillips #00 screwdriver to remove the single screw securing the Wi-Fi card.
- ⓘ The Wi-Fi card will slightly lift away from the motherboard.
- Pull the Wi-Fi card directly out of its port.

## Step 5



- Use a Phillips #00 screwdriver to remove the three screws securing the motherboard.
- Gently disconnect the cables and ribbon cables connected to the motherboard.

## Step 6 — Display



- Use a Phillips #00 screwdriver to remove the four 5 mm screws from the left and right hinges (two screws on each hinge).

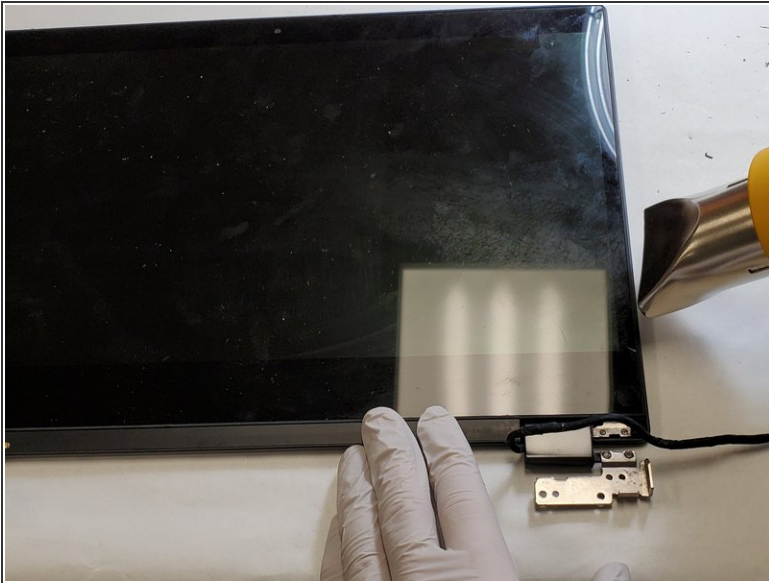
## Step 7



- Disconnect the display assembly from the rest of the device by separating the hinges of the display from the body of the laptop.
- Use a spudger to carefully pry loose the two screw covers (one on each hinge).
- Use a Phillips #00 screwdriver to remove the two 3 mm screws from the display (one on each side).



## Step 8



- Use a heat gun or an iOpener to lightly heat the outer edges of the display, loosening the adhesive strips.
- Wedge a Jimmy or opening picks between the display and display housing, then carefully pry around the entire perimeter until the display separates from the housing.

## Step 9



- Disconnect the display ribbon cable.



To reassemble your device, follow these instructions in reverse order.