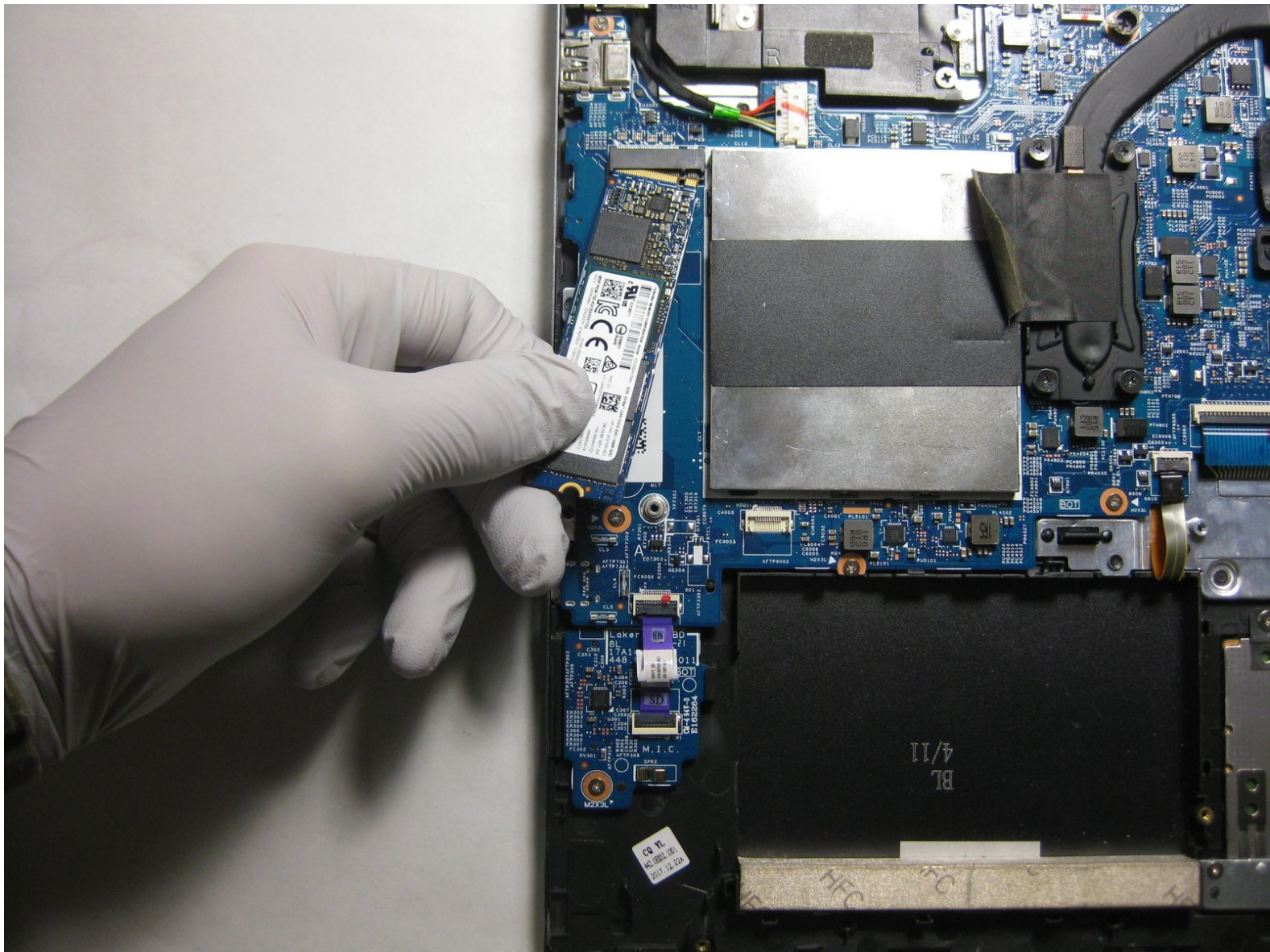




HP Envy x360 15-bp143cl SSD Replacement

There are many different reasons that you may...

Written By: Thomas Schemm



INTRODUCTION

There are many different reasons that you may want to replace or upgrade your Solid State Drive (SSD), including improving your machine's boot time and increasing disk storage space. Some similar models of HP Envy laptops do not come with a pre-installed SSD, but can be upgraded through a similar procedure as listed in this guide. Upgrading your mass storage device can help with your boot and operating speeds. One of the main reasons to upgrade is the ability to improve storage capacity without compromising space (Hard Disk Drives (HDDs) are much larger). HDDs also have a significantly higher propensity to failure due to being a magnetic rotary mechanism with many moving parts. The steps outlined in this procedure walk you through replacing the mass storage device in an HP Envy x360 15m-bq021dx laptop with an SSD.

If you're noticing prolonged boot times, energy consumption issues such as poor battery life, or loud fan noise, a failing mass storage device may be your issue. It is important to note that the mass storage device is something that the vast majority of the other components in the laptop rely on, so addressing issues here can prevent a lot of headaches later with other pieces of hardware being over-worked.

This replacement or upgrade does not require any special skills such as soldering.



TOOLS:

- [Phillips Head Screwdriver: Size PH1](#) (1)
- [T5 Torx Screwdriver](#) (1)
- [iFixit Opening Tool](#) (1)
- [Anti-Static Wrist Strap](#) (1)



PARTS:

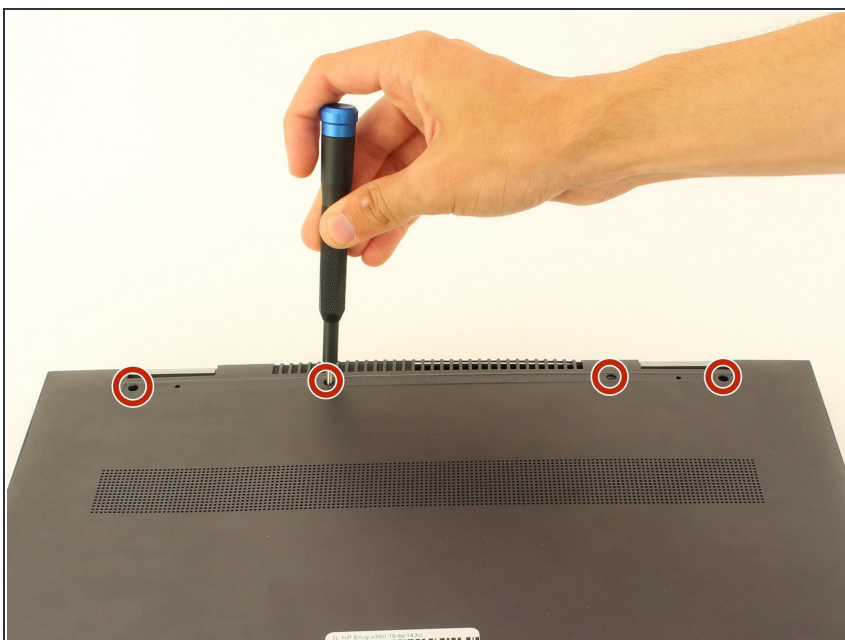
- [Crucial P3 NVMe PCIe M.2 2280SS SSD - solid performance, switching from HDD or SATA to NVMe™](#) (1)
- [Crucial P3 Plus NVMe PCIe M.2 2280SS SSD - fast Gen4 NVMe™ storage for data-intensive applications](#) (1)
- [Crucial P5 Plus NVMe PCIe M.2 2280SS SSD - professionals, creatives, and hardcore gamers](#) (1)

Step 1 — Battery



- Flip the laptop over.
- Peel off the rubber strip closest to the hinges.

Step 2



- Use a Phillips #1 screwdriver (PH1 bit) to remove the four 6.5mm screws that were underneath the rubber strip.

Step 3



- Use a Torx T5 screwdriver (T5 bit) to remove the three 5mm screws near the bottom edge of the laptop.

Step 4



- Lift the back panel to remove it from the laptop.
- ⓘ Use an opening tool to pry open the back panel if it does not easily lift apart.

Step 5



- Use a Phillips #1 screwdriver (PH1) to remove the seven 4mm screws indicated by the gray arrows on the battery.

Step 6



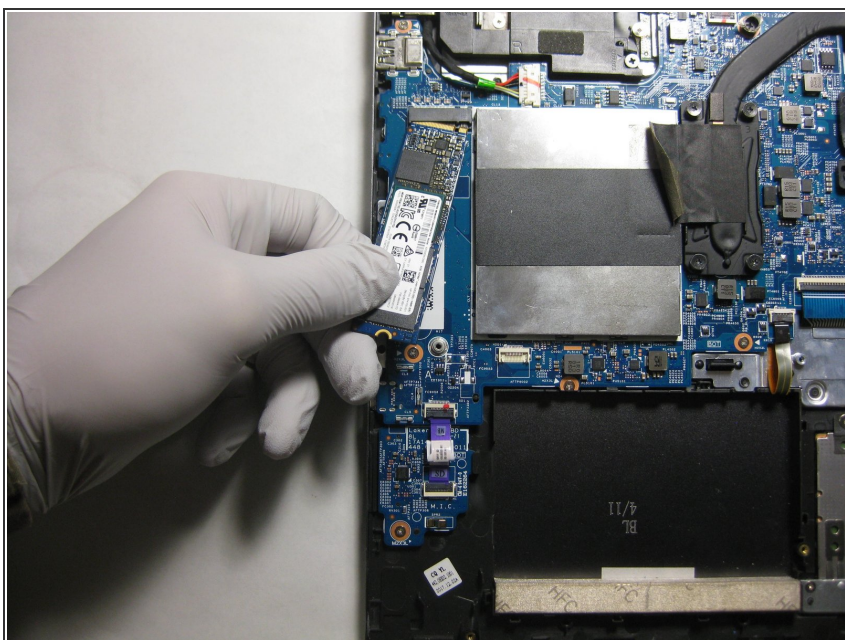
- Pull the battery from the connecting port and lift to remove it from the laptop.

Step 7 — SSD



- Use a Phillips #1 screwdriver to remove the single 4 mm screw securing the SSD.

Step 8



- Pull the SSD directly out its port.

To reassemble your device, follow these instructions in reverse order.