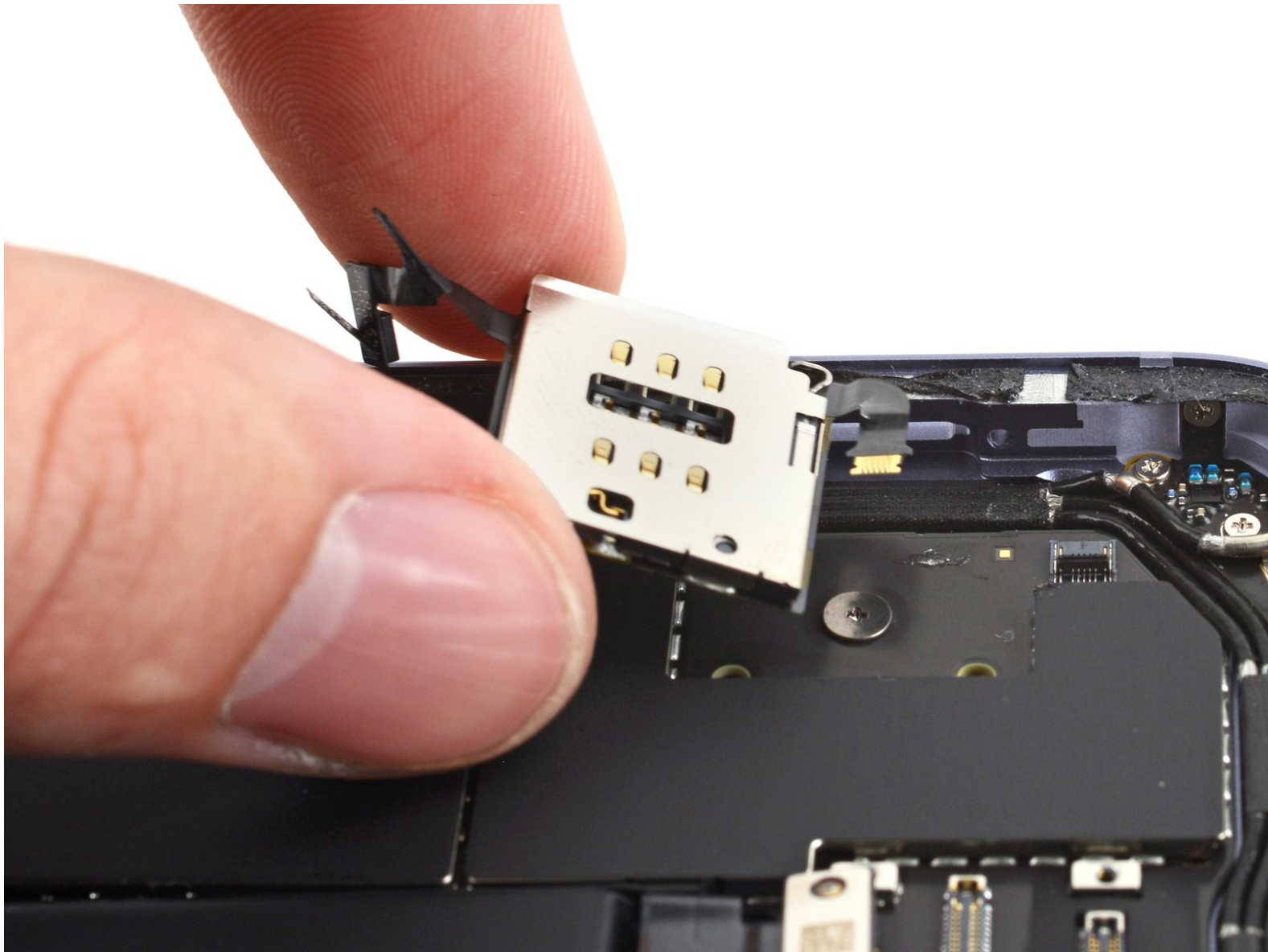




iPad Mini 6 SIM Card Reader Replacement

How to replace the SIM card reader in your iPad mini 6.

Written By: Alex Diaz-Kokaisl



INTRODUCTION

Use this guide to replace the SIM card reader in your iPad mini 6.

You'll need replacement adhesive in order to complete this repair.

TOOLS:

- [Safety Glasses](#) (1)
- [Packing Tape](#) (1)

Optional

- [SIM Card Eject Tool](#) (1)
 - [iOpener](#) (1)
 - [iFixit Opening Picks \(Set of 6\)](#) (1)
 - [Spudger](#) (1)
 - [Phillips #000 Screwdriver](#) (1)
 - [ESD Safe Tweezers Blunt Nose](#) (1)
-

Step 1 — Remove the SIM card tray



- Insert a SIM eject tool, bit, or straightened paper clip into the SIM card tray hole on the bottom-right edge of the device.
 - Press the SIM eject tool into the SIM card tray hole to eject the SIM card tray.
 - Remove the SIM card tray.
- ⓘ If you accidentally inserted the SIM eject tool into a microphone hole, don't worry! [You most likely didn't damage the microphone.](#)

Step 2 — Apply tape to a cracked screen



- If your display glass is cracked, keep further breakage contained and prevent bodily harm during your repair by taping the glass.
- Lay overlapping strips of clear packing tape over the iPad's display until the whole face is covered.
 - ⓘ This will keep glass shards contained and provide structural integrity when prying and lifting the display.
- Do your best to follow the rest of the guide as described. However, once the glass is broken, it will likely continue to crack as you work, and you may need to use a metal prying tool to scoop the glass out.

⚠ Wear safety glasses to protect your eyes, and be careful not to damage the LCD screen.

Step 3 — Heat the bottom edge



⚠ Completely power off your device before you begin.

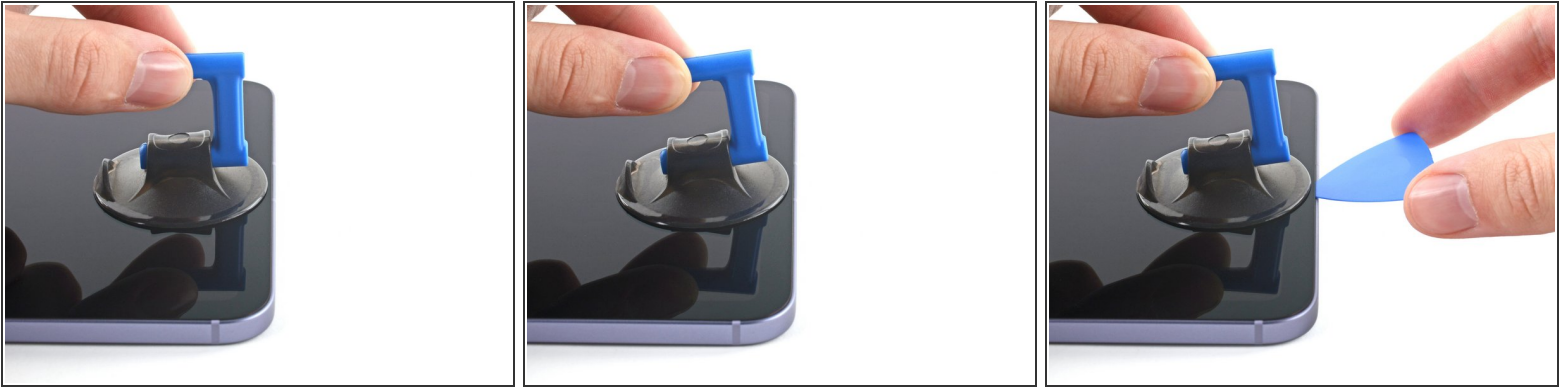
- Apply a [heated iOpener](#) to the bottom edge of the device for 90 seconds to loosen the adhesive underneath.
- i** A hair dryer, heat gun, or hot plate may also be used, but be careful not to overheat the device.

Step 4 — Screen removal information



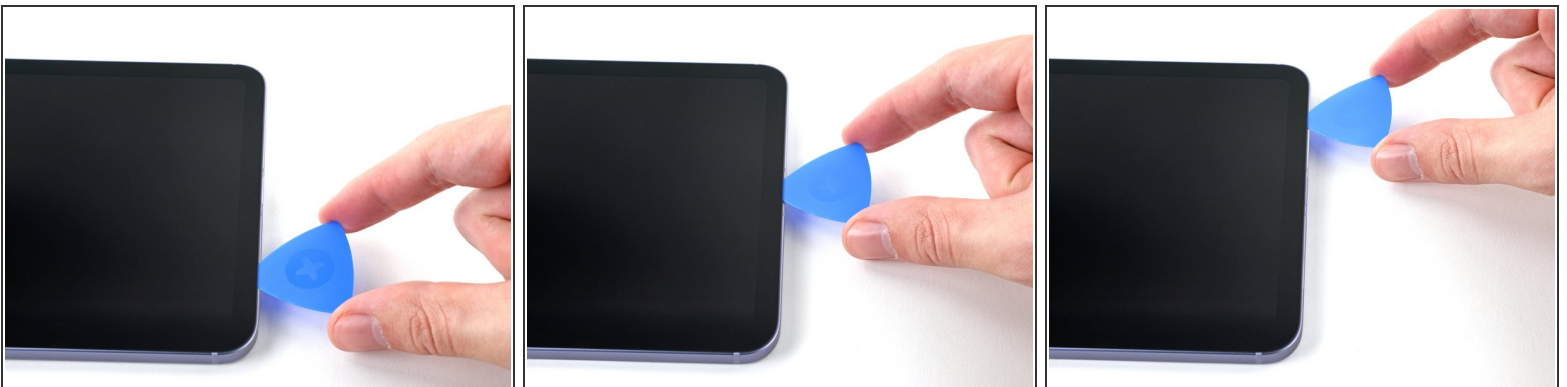
- While you're waiting for the adhesive to loosen, note the following:
 - The areas at the top and bottom of the screen are sensitive to prying.
⚠ Don't insert a pick more than 3 mm to avoid damaging the screen.
 - There's a long circuit board attached to the screen that sits parallel to the left edge.
⚠ Don't insert a pick more than 1.5 mm to avoid damaging the circuit board.
- i** The first two images are mirrored for demonstration purposes.

Step 5 — Insert an opening pick



- Once the screen is warm to touch, apply a suction handle to the bottom edge of the screen and as close to the edge as possible.
- Lift the screen with the suction handle to create a small gap between the screen and the frame.
- Insert an opening pick into the gap between the frame and the screen.
⚠ Don't insert the pick more than 1.5 mm to avoid damaging the circuit board.
- Leave the opening pick in place to prevent the adhesive from resealing.

Step 6 — Separate the bottom adhesive



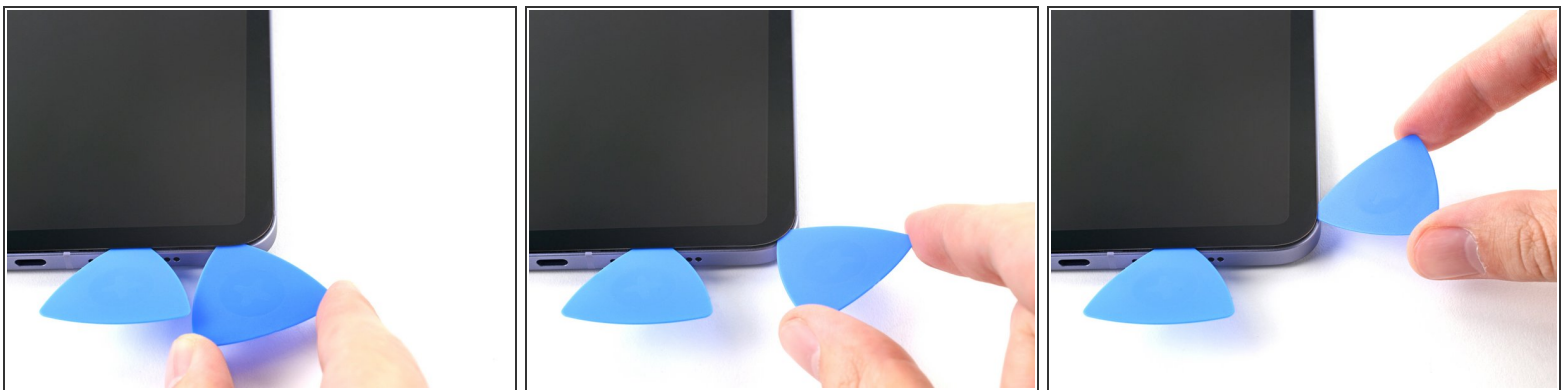
- Slide the pick along the bottom edge of the device towards the bottom-right corner.
- Leave the pick in to prevent the adhesive from resealing.

Step 7 — Heat the right edge



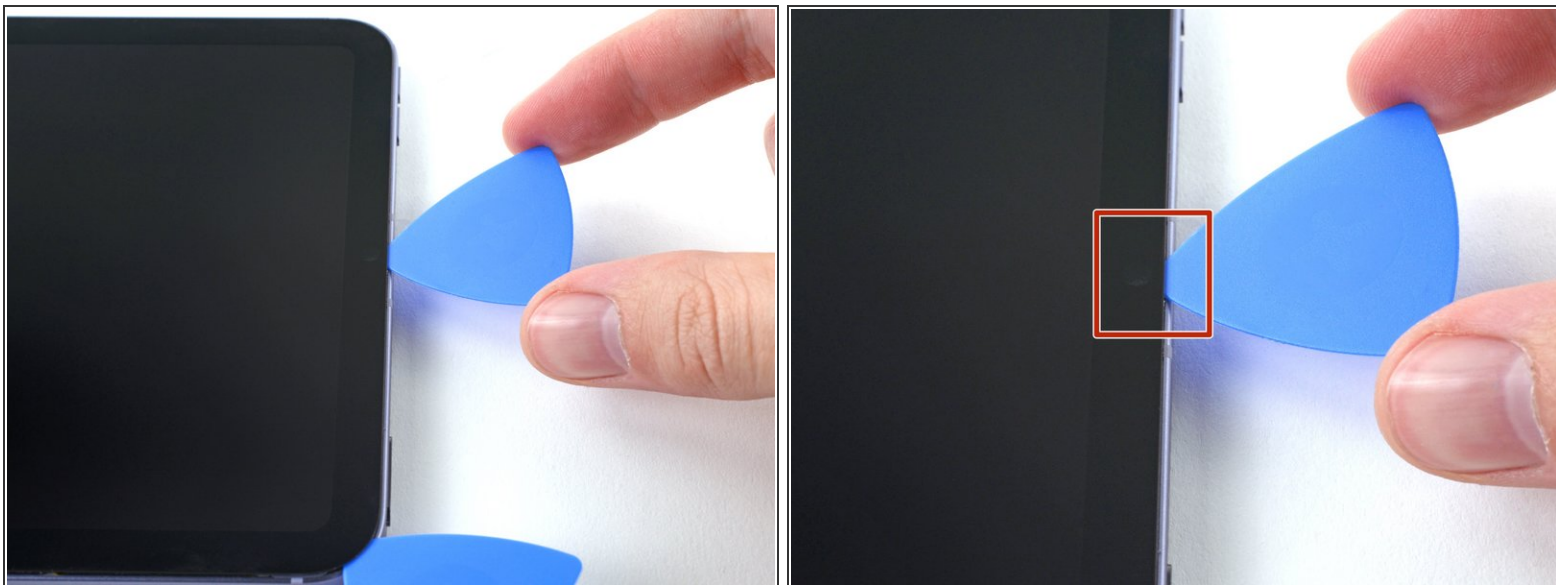
- Apply a heated iOpener to the right edge of the device for 90 seconds to loosen the adhesive underneath.

Step 8 — Separate the bottom-right corner adhesive



- Rotate the opening pick around the bottom-right corner of the device.

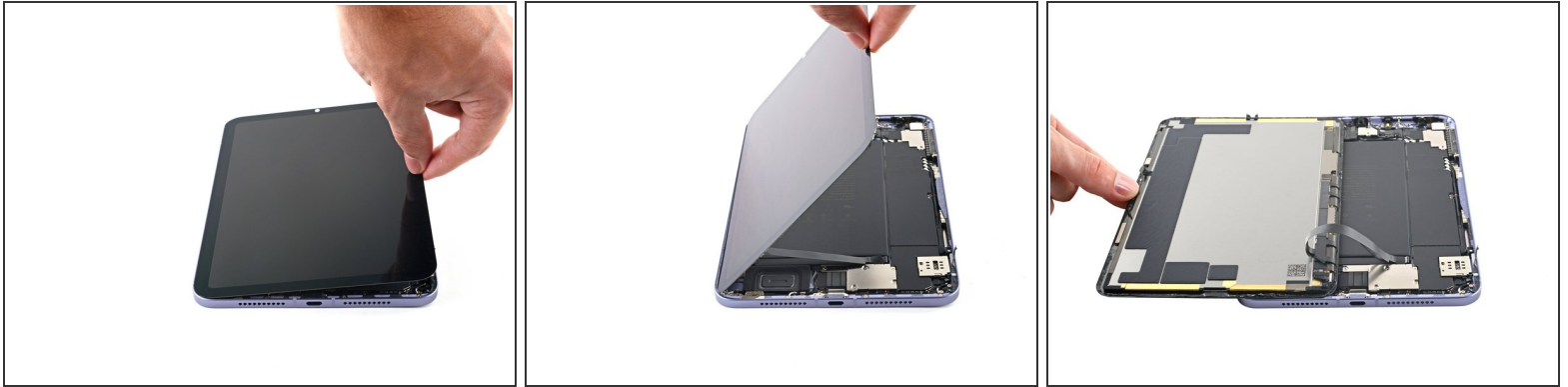
Step 9 — Separate the remaining adhesive



- Repeat the heating, slicing, and leaving opening picks for the remaining edges of the device.

⚠ When you slice near the front camera, don't insert the pick more than 1.5 mm to avoid damaging or smearing the camera.

Step 10 — Reposition the screen



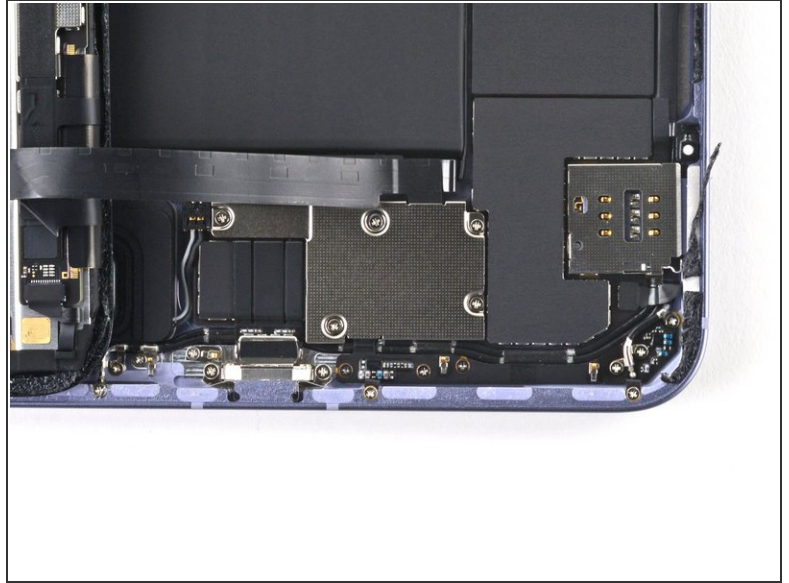
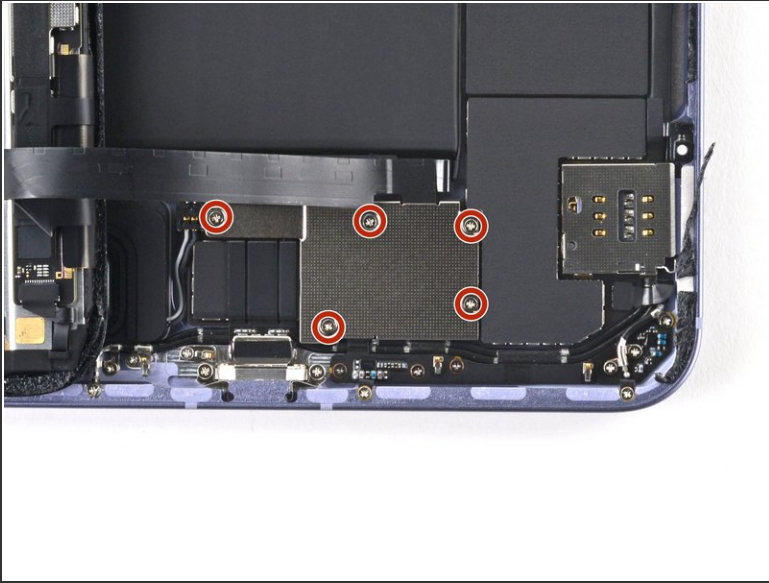
i If there's still resistance around the edges of the screen, use an opening pick to cut the adhesive again.

! Don't try to remove the screen all the way yet; it's still connected to the frame by a flex cable.

- With the bottom of the device facing you, pull the right edge of the screen up and towards the left edge of the device.
- Rest the screen upside down and parallel to the frame before continuing.

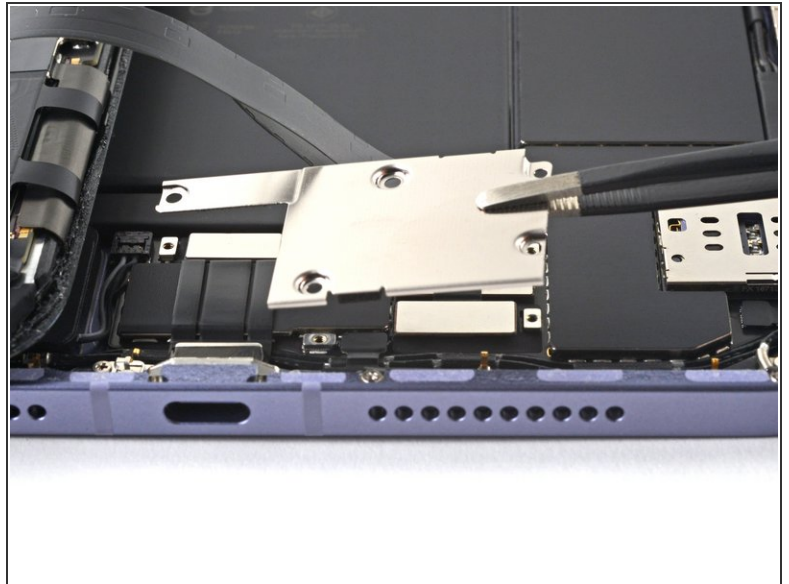
! Don't twist the screen or move it too far away from the frame to avoid damaging the flex cable.

Step 11 — Unfasten the display cable bracket



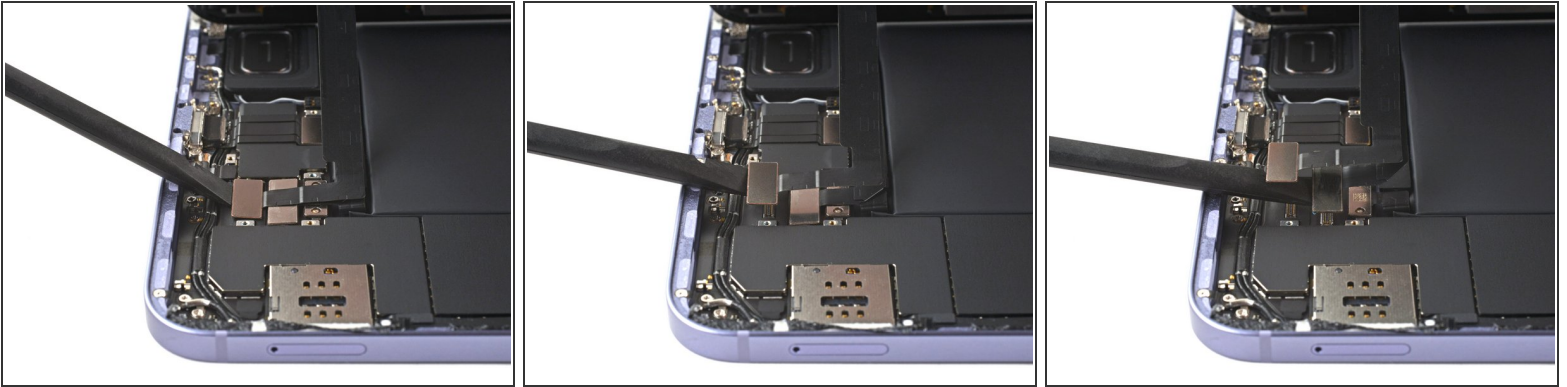
- Use a Phillips #000 screwdriver to remove the five 1.2 mm-long screws securing the frame bracket to the frame.

Step 12 — Remove the display cable bracket



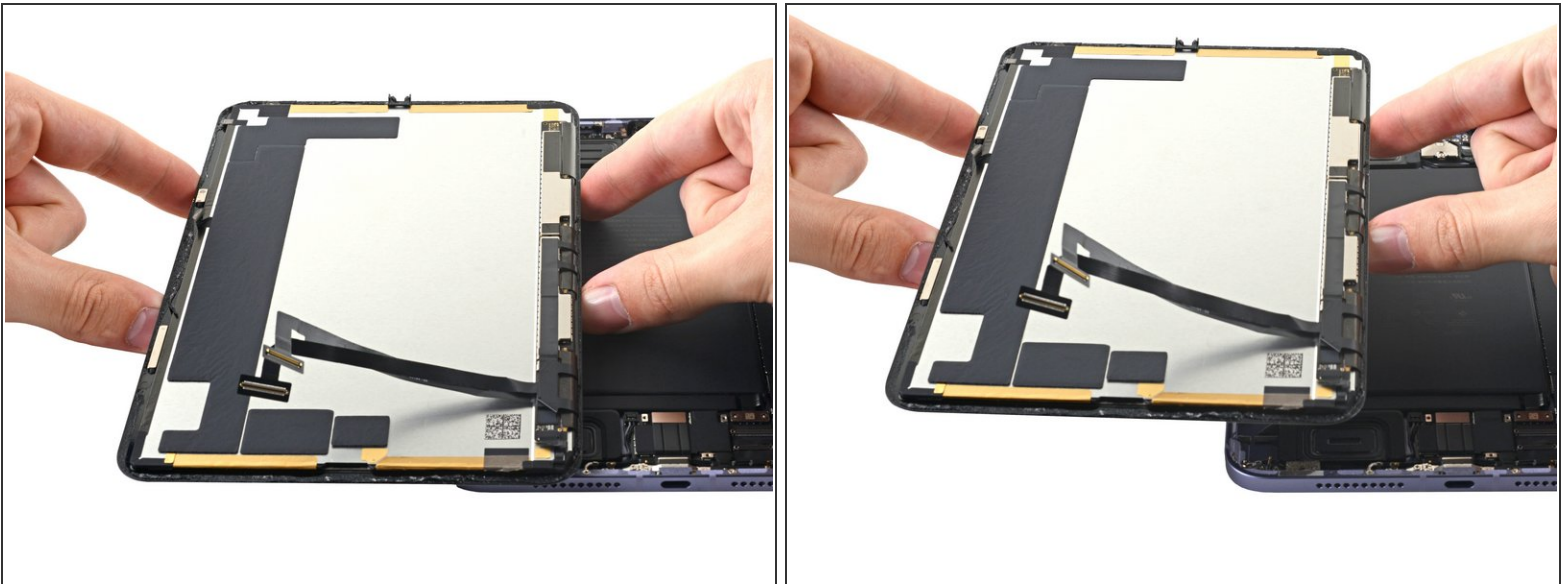
- Use tweezers, or your fingers, to remove the display cable bracket from the frame.

Step 13 — Disconnect the display



- Use the flat end of a spudger to pry up and disconnect the display cable's two press connectors secured to the frame.

Step 14 — Remove the screen



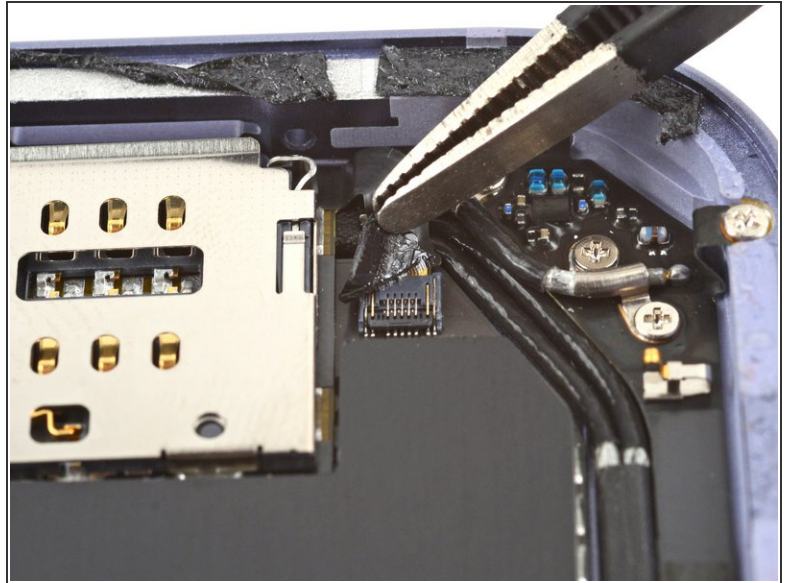
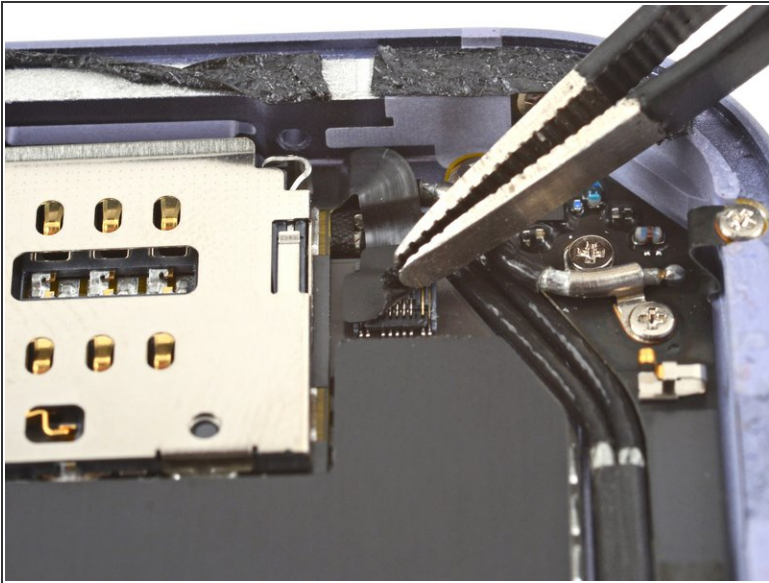
- Remove the screen from the frame.

Step 15 — Disconnect the battery



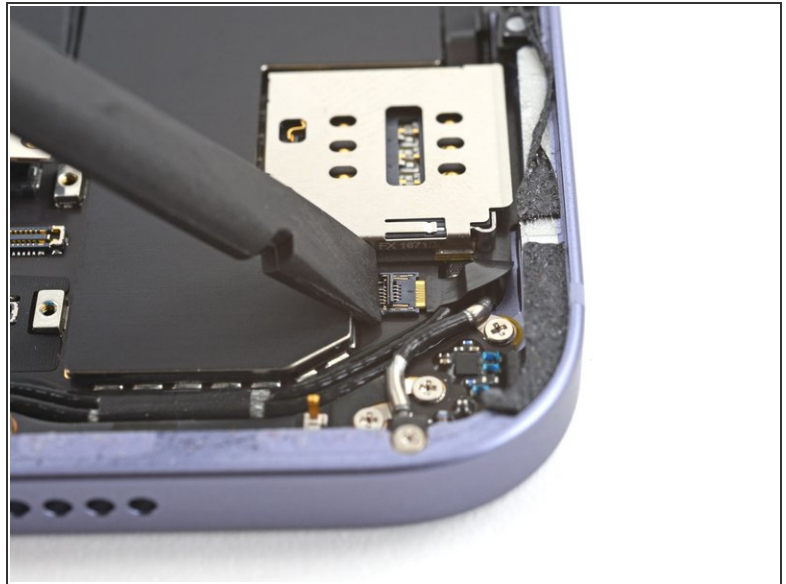
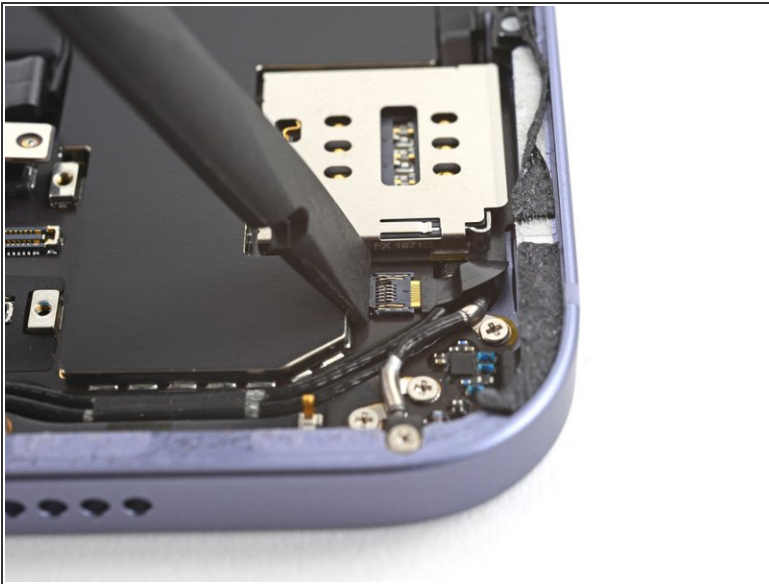
- The the flat end of a spudger to pry up and disconnect the battery's press connector secured to the frame.
- ✦ To re-attach [press connectors](#) like this one, carefully align and press down on one side until it clicks into place, then repeat on the other side. Do not press down on the middle. If the connector is misaligned, the pins can bend, causing permanent damage.

Step 16 — Remove the tape



- Use tweezers, or your fingers, to remove the black tape on top of the SIM card reader's ZIF connector.

Step 17 — Disconnect the SIM card reader's ZIF connector



- Use a spudger, an opening tool, or your fingernail to flip up the small, hinged locking flap on the SIM card reader cable's [ZIF connector](#).

Step 18



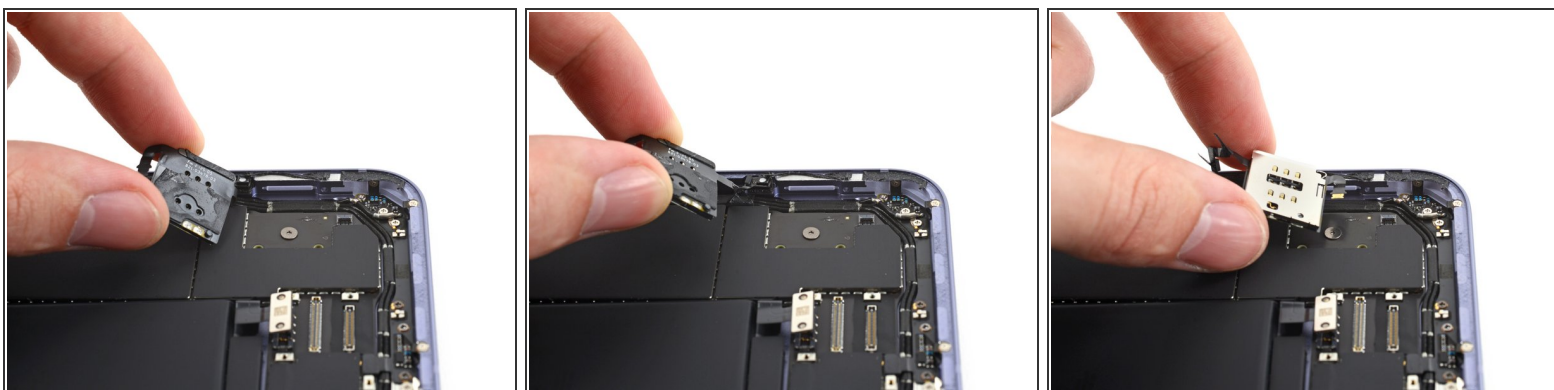
- Use a pair of tweezers to pull the SIM card reader cable straight out of its connector on the frame.

Step 19 — Separate the SIM card reader's adhesive



- Insert an opening pick between the frame and the SIM card reader's edge closest to its ZIF connector.
- Slice while prying up with the pick around the perimeter of the reader to separate the adhesive.

Step 20 — Remove the SIM card reader



- Gently peel back the remaining adhesive attached to the SIM card reader.
- Remove the SIM card reader.

To reassemble your device, follow these instructions in reverse order.

Compare your new replacement part to the original part—you may need to transfer remaining components or remove adhesive backings from the new part before you install it.

Repair didn't go as planned? Try some [basic troubleshooting](#), or ask our [iPad mini 6 Answers community](#) for help.