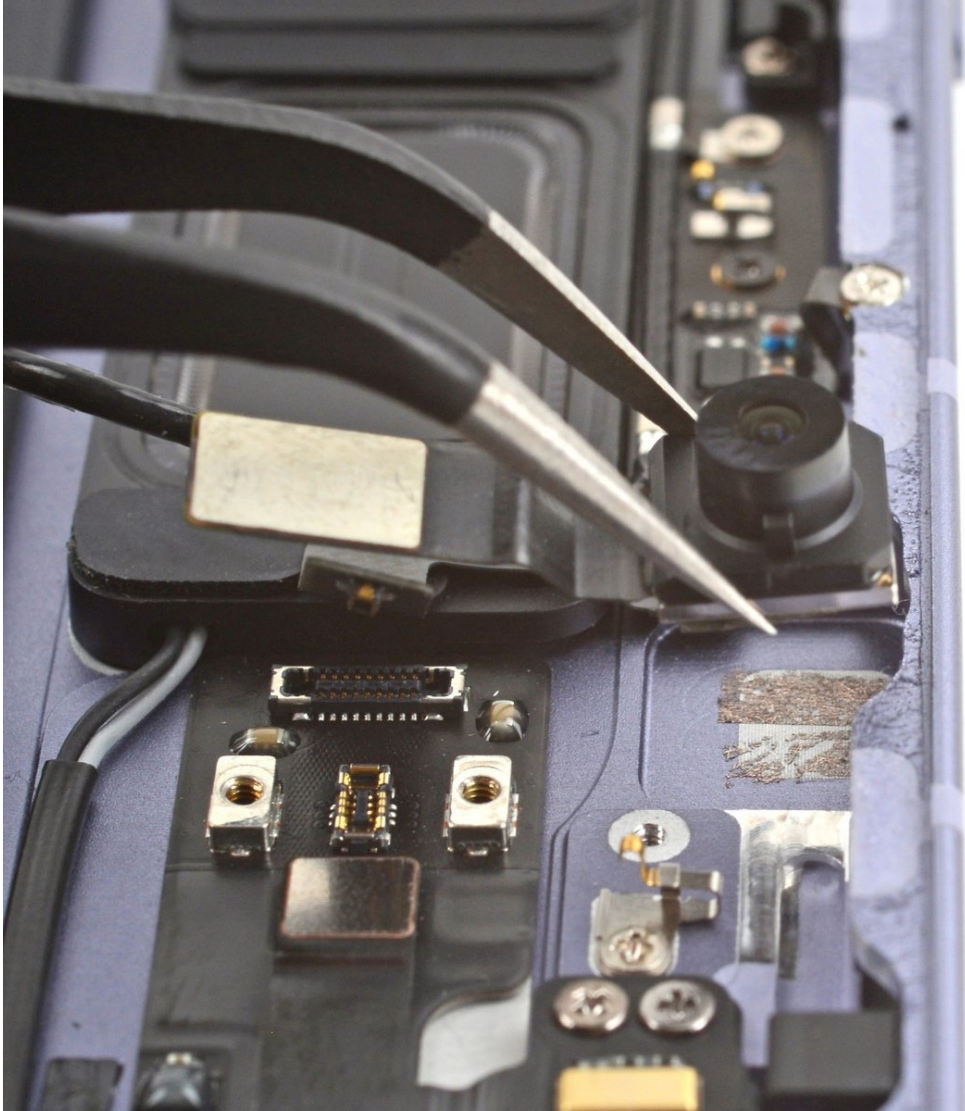




iPad Mini 6 Front Camera Replacement

Use this guide to replace the front camera in...

Written By: Alex Diaz-Kokaisl



INTRODUCTION

Use this guide to replace the front camera in your iPad mini 6.

You'll need replacement adhesive in order to complete this repair.

TOOLS:

[Safety Glasses](#) (1)

[Packing Tape](#) (1)

[iOpener](#) (1)

[iFixit Opening Picks \(Set of 6\)](#) (1)

[Spudger](#) (1)

[Phillips #000 Screwdriver](#) (1)

[ESD Safe Blunt Nose Tweezers](#) (1)

[Tweezers](#) (1)

Step 1 — Apply tape to a cracked screen



- If your display glass is cracked, keep further breakage contained and prevent bodily harm during your repair by taping the glass.
- Lay overlapping strips of clear packing tape over the iPad's display until the whole face is covered.
 - ⓘ This will keep glass shards contained and provide structural integrity when prying and lifting the display.
- Do your best to follow the rest of the guide as described. However, once the glass is broken, it will likely continue to crack as you work, and you may need to use a metal prying tool to scoop the glass out.

⚠ Wear safety glasses to protect your eyes, and be careful not to damage the LCD screen.

Step 2 — Heat the bottom edge



⚠️ **Completely power off your device before you begin.**

- Apply a [heated iOpener](#) to the bottom edge of the device for 90 seconds to loosen the adhesive underneath.
- ⓘ A hair dryer, heat gun, or hot plate may also be used, but be careful not to overheat the device.

Step 3 — Screen removal information



- While you're waiting for the adhesive to loosen, note the following:
 - The areas at the top and bottom of the screen are sensitive to prying.
⚠️ **Don't insert a pick more than 3 mm to avoid damaging the screen.**
 - There's a long circuit board attached to the screen that sits parallel to the left edge.
⚠️ **Don't insert a pick more than 1.5 mm to avoid damaging the circuit board.**
- ⓘ The first two images are mirrored for demonstration purposes.

Step 4 — Insert an opening pick



- Once the screen is warm to touch, apply a suction handle to the bottom edge of the screen and as close to the edge as possible.
- Lift the screen with the suction handle to create a small gap between the screen and the frame.
- Insert an opening pick into the gap between the frame and the screen.
⚠ Don't insert the pick more than 1.5 mm to avoid damaging the circuit board.
- Leave the opening pick in place to prevent the adhesive from resealing.

Step 5 — Separate the bottom adhesive



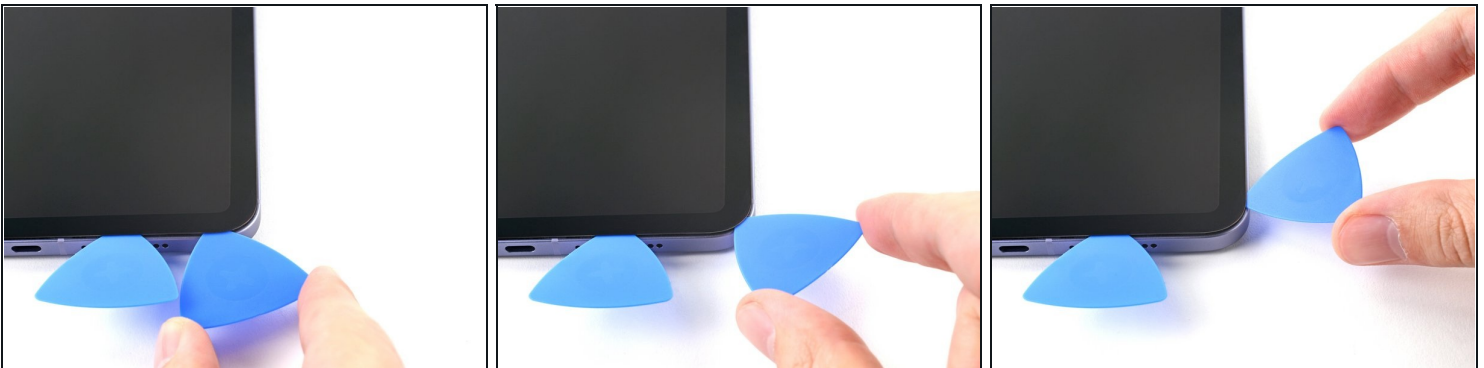
- Slide the pick along the bottom edge of the device towards the bottom-right corner.
- Leave the pick in to prevent the adhesive from resealing.

Step 6 — Heat the right edge



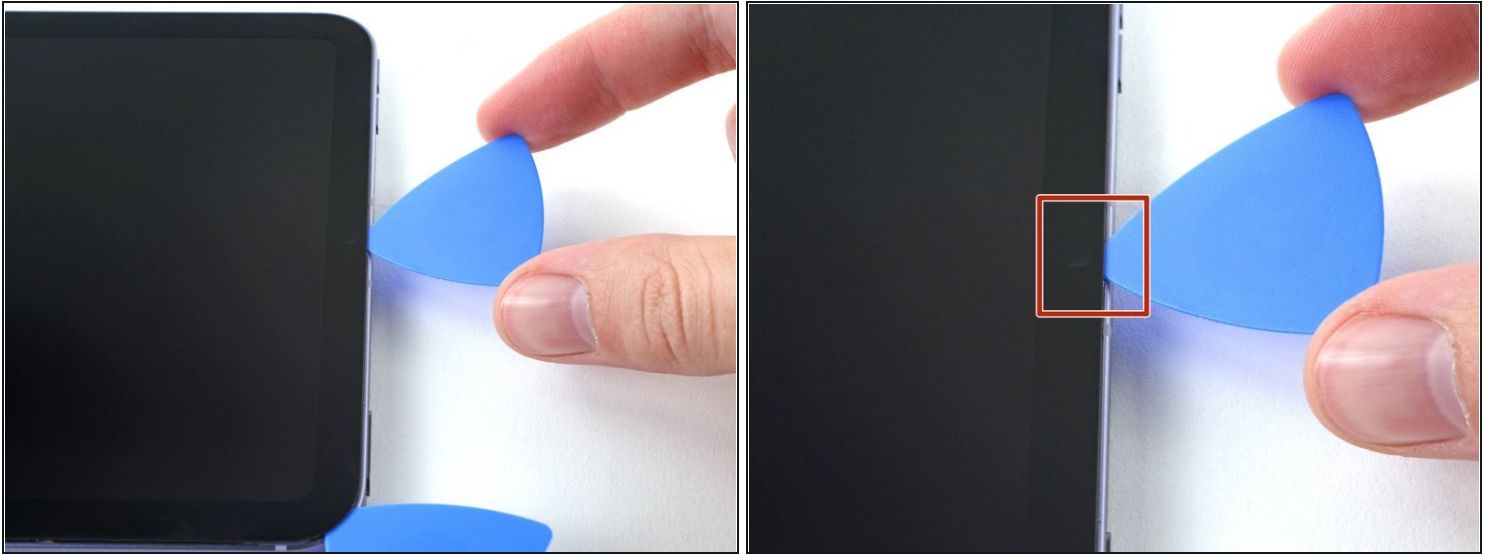
- Apply a heated iOpener to the right edge of the device for 90 seconds to loosen the adhesive underneath.

Step 7 — Separate the bottom-right corner adhesive



- Rotate the opening pick around the bottom-right corner of the device.

Step 8 — Separate the remaining adhesive



- Repeat the heating, slicing, and leaving opening picks for the remaining edges of the device.

⚠ When you slice near the front camera, don't insert the pick more than 1.5 mm to avoid damaging or smearing the camera.

Step 9 — Reposition the screen



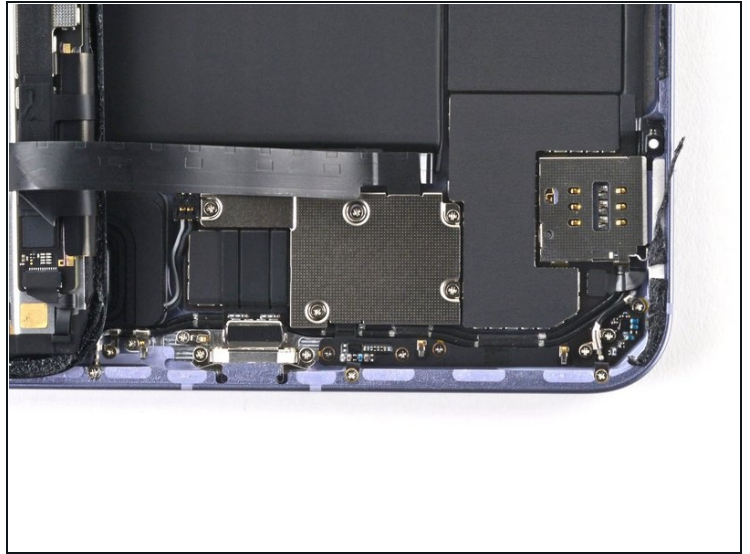
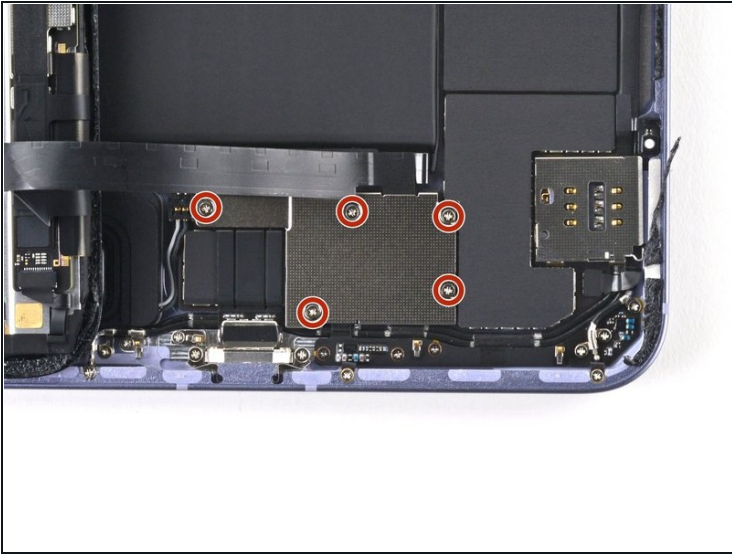
ⓘ If there's still resistance around the edges of the screen, use an opening pick to cut the adhesive again.

⚠ Don't try to remove the screen all the way yet; it's still connected to the frame by a flex cable.

- With the bottom of the device facing you, pull the right edge of the screen up and towards the left edge of the device.
- Rest the screen upside down and parallel to the frame before continuing.

⚠ Don't twist the screen or move it too far away from the frame to avoid damaging the flex cable.

Step 10 — Unfasten the display cable bracket



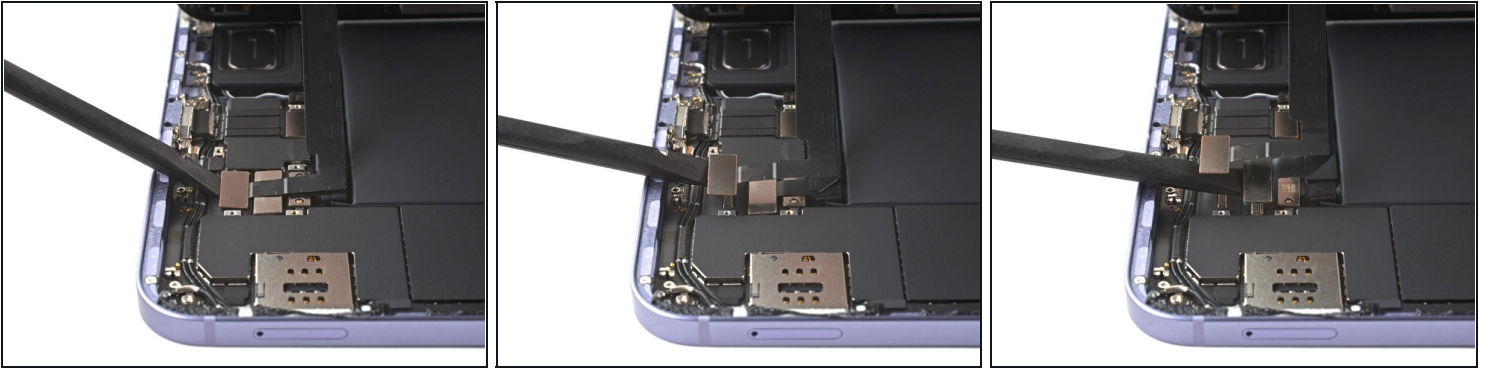
- Use a Phillips #000 screwdriver to remove the five 1.2 mm-long screws securing the frame bracket to the frame.

Step 11 — Remove the display cable bracket



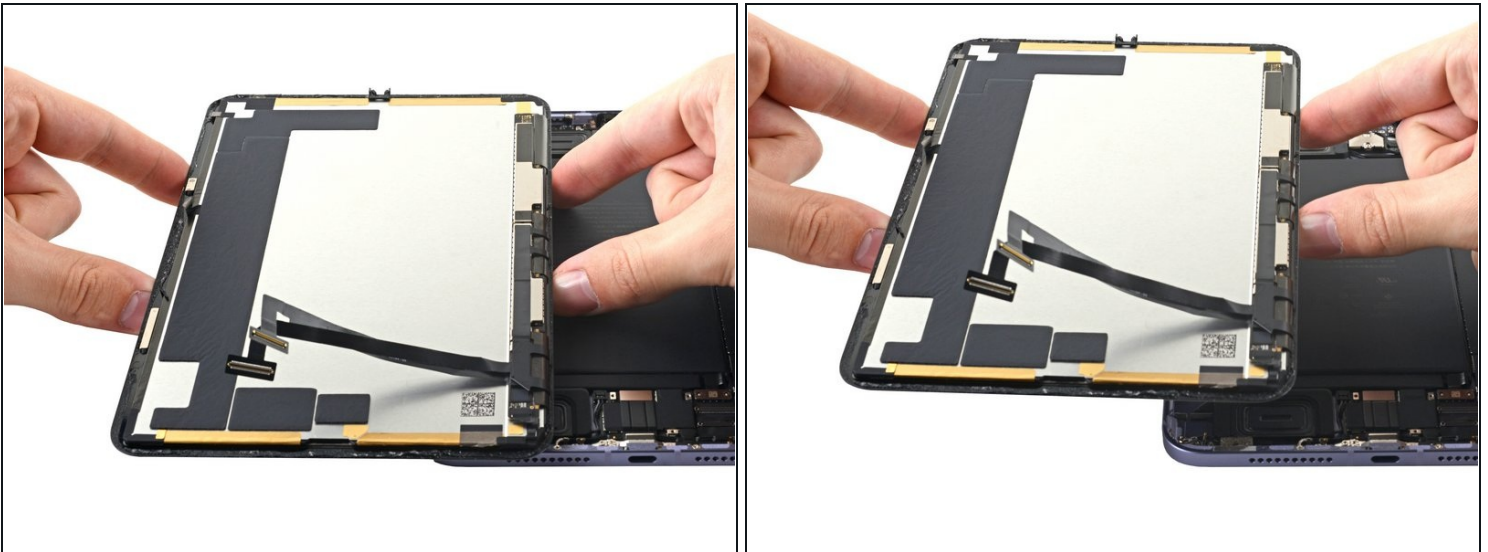
- Use tweezers, or your fingers, to remove the display cable bracket from the frame.

Step 12 — Disconnect the display



- Use the flat end of a spudger to pry up and disconnect the display cable's two press connectors secured to the frame.

Step 13 — Remove the screen



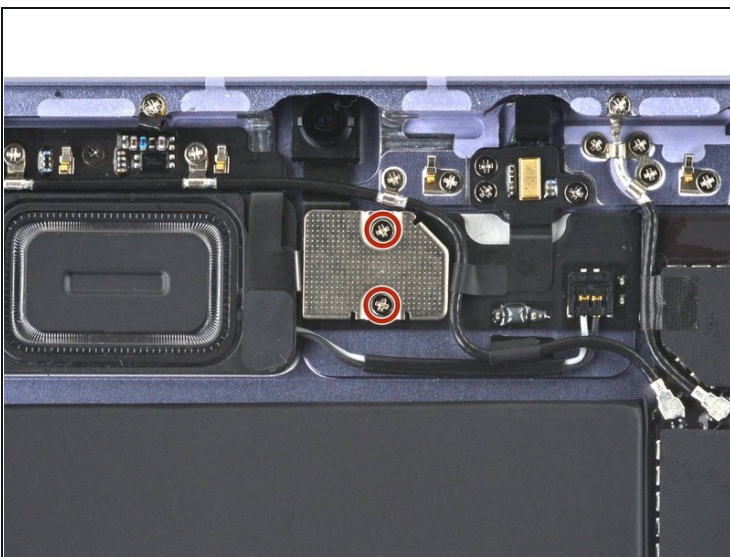
- Remove the screen from the frame.

Step 14 — Disconnect the battery



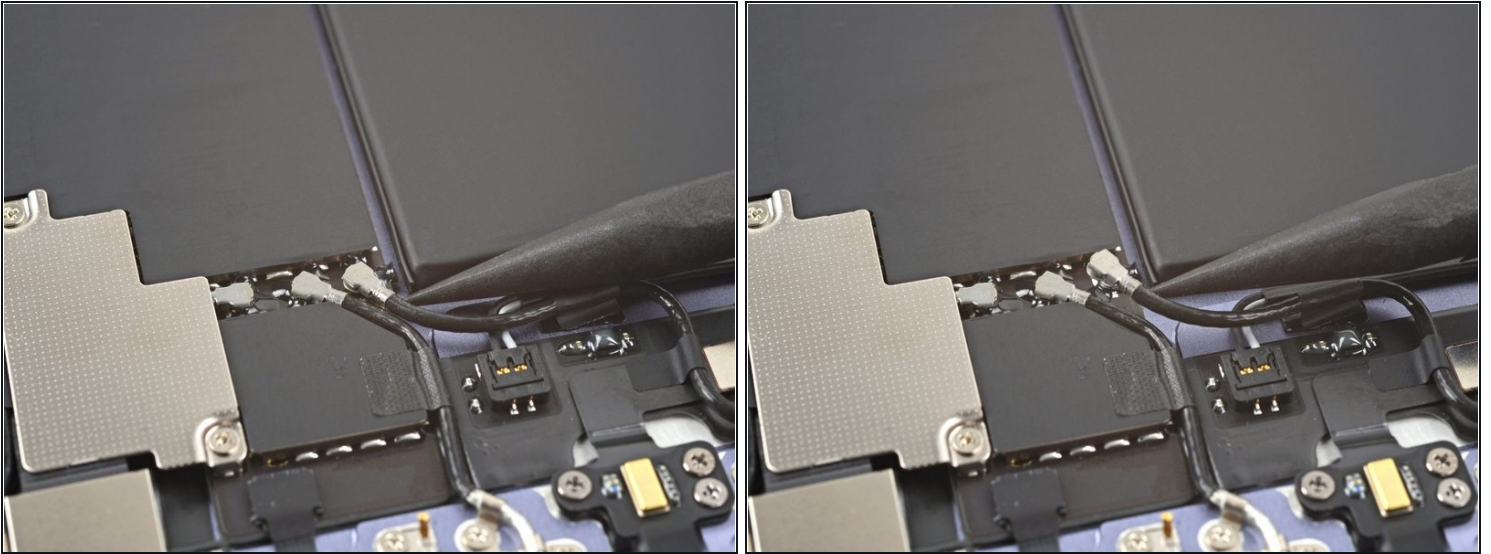
- The the flat end of a spudger to pry up and disconnect the battery's press connector secured to the frame.
- ✦ To re-attach [press connectors](#) like this one, carefully align and press down on one side until it clicks into place, then repeat on the other side. Do not press down on the middle. If the connector is misaligned, the pins can bend, causing permanent damage.

Step 15 — Unfasten the front camera shield



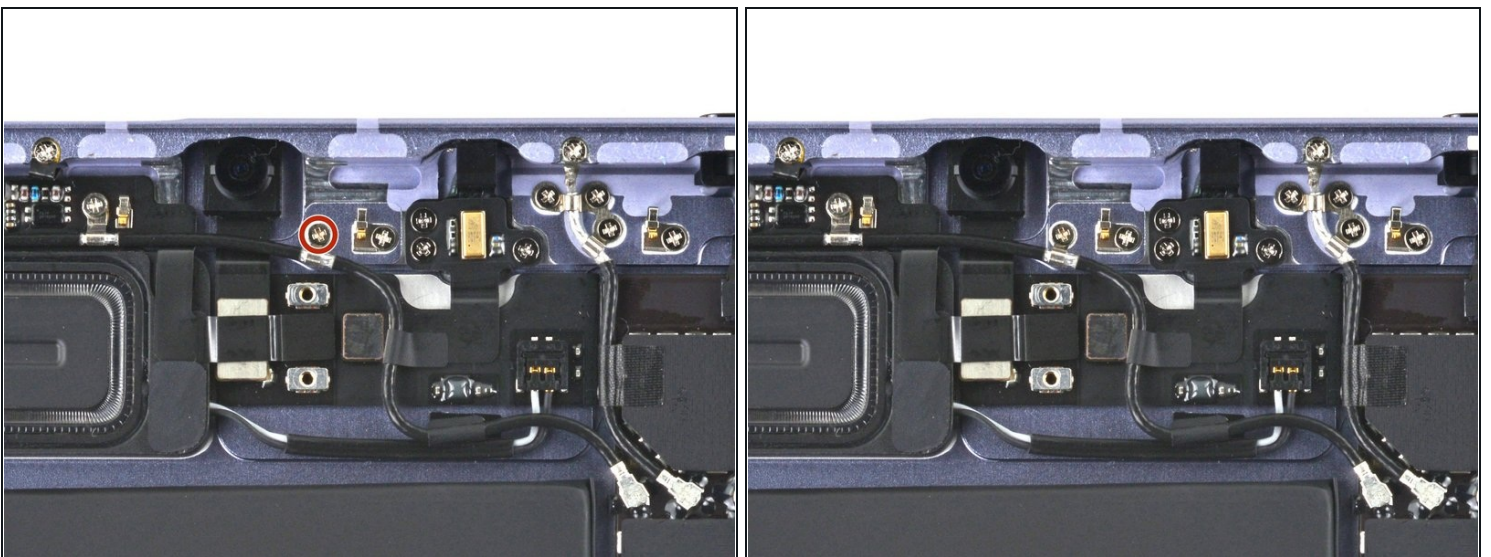
- Use a Phillips #000 screwdriver to remove the two 1.2 mm screws securing the front camera shield to the frame.

Step 16 — Disconnect the volume button board



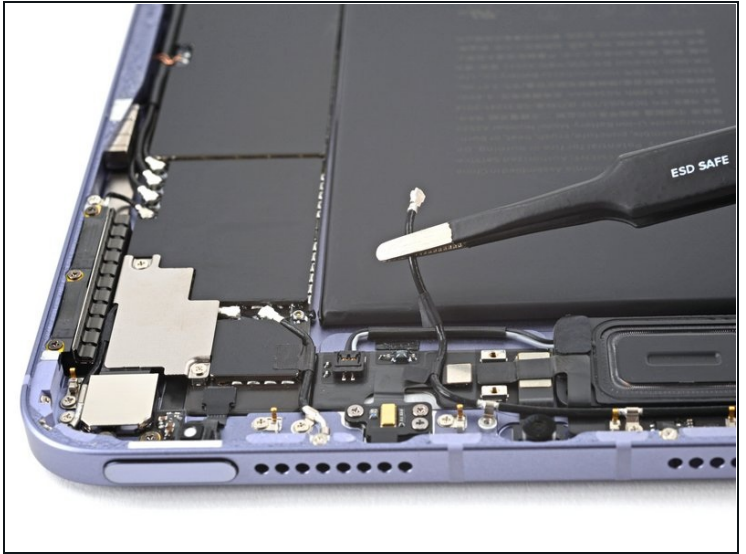
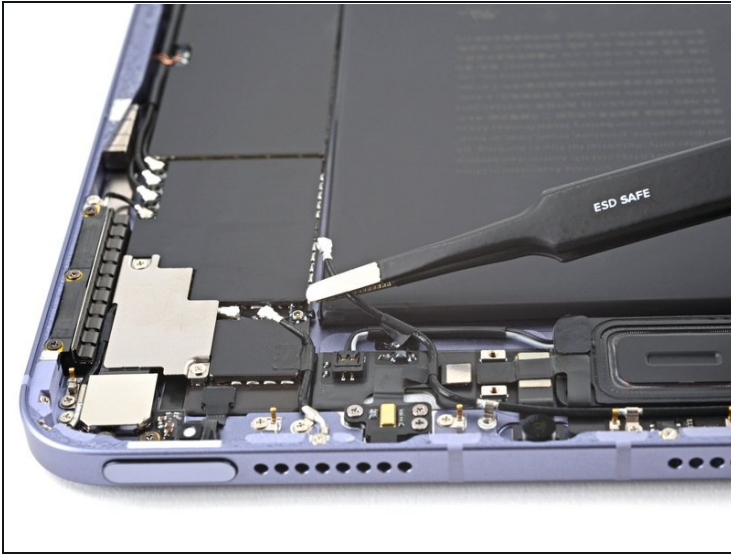
- Use the tip of a spudger to pry up and disconnect the volume button board's coaxial cable.
- ☑ During reassembly, these can be tricky to reconnect. Hold each connector in place over its socket and press down with the flat end of a spudger. The connector should snap into place.

Step 17 — Unfasten the volume button board's coaxial cable



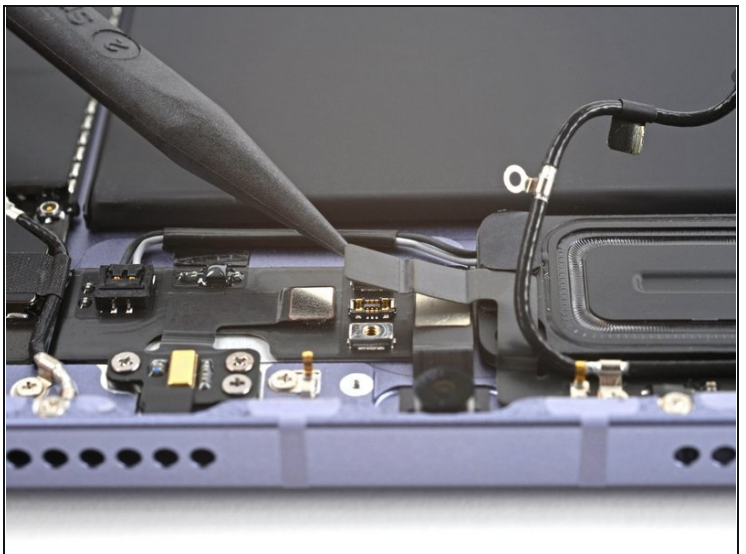
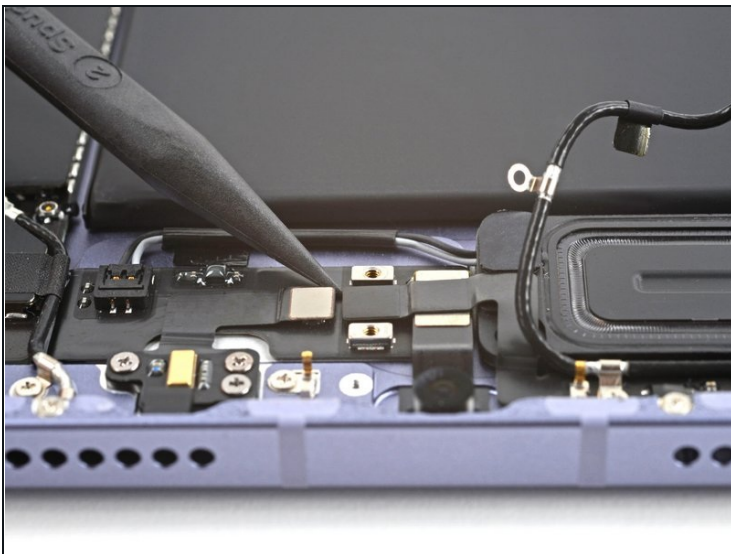
- Use a Phillips #000 screwdriver to remove the 1 mm screw securing the volume button board's coaxial cable to the frame.

Step 18 — Reposition the coaxial cable



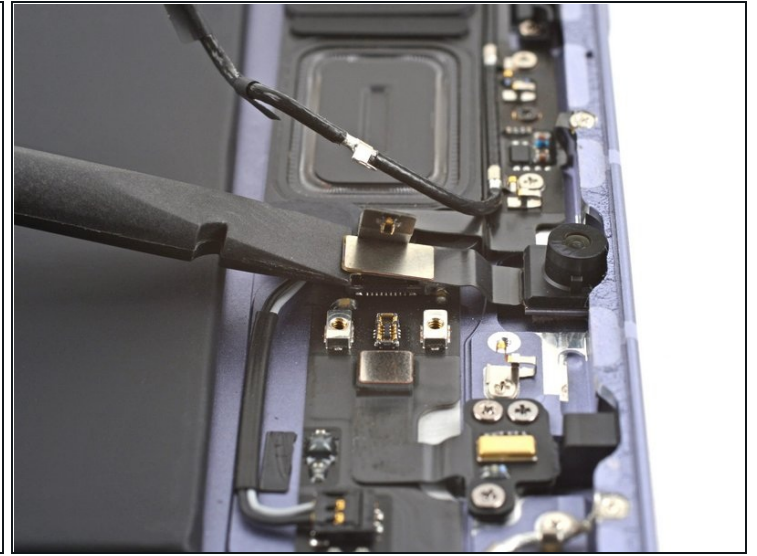
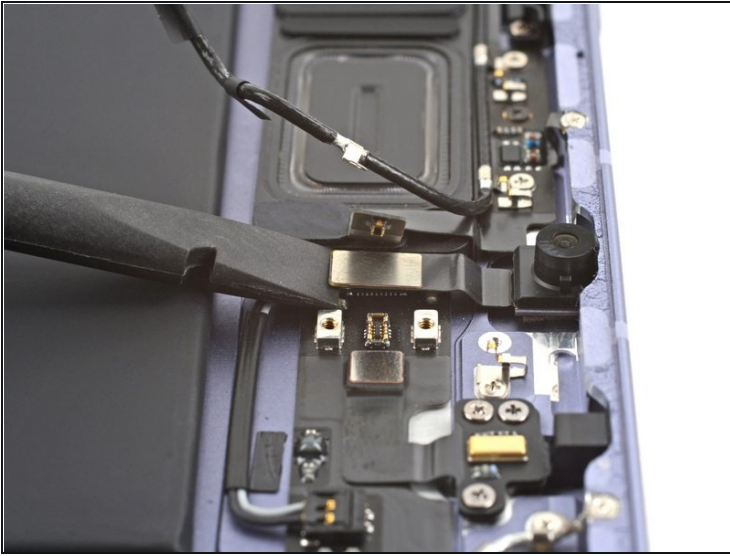
- Use tweezers, or your fingers, to pull the coaxial cable away from the frame, making sure to separate the tape keeping it in place.

Step 19 — Disconnect the volume button board



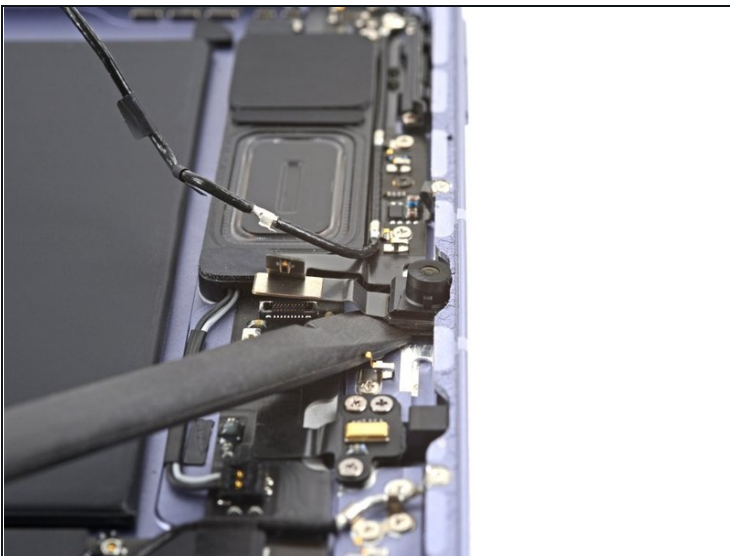
- Use a spudger to pry up and disconnect the volume button board's press connector secured to the frame.

Step 20 — Disconnect the front camera



- Use a spudger to pry up and disconnect the front camera board's press connector secured to the frame.

Step 21 — Separate the front camera's adhesive



- ① The front camera is secured to the frame with light adhesive.
- Insert the flat end of a spudger between the front camera and the frame.
- Gently pry up while pushing the spudger deeper into the gap to separate the adhesive.

Step 22 — Remove the front camera



- Use tweezers, or your fingers to remove the front camera.

To reassemble your device, follow these instructions in reverse order.

Compare your new replacement part to the original part—you may need to transfer remaining components or remove adhesive backings from the new part before you install it.

Repair didn't go as planned? Try some [basic troubleshooting](#), or ask our [iPad mini 6 Answers community](#) for help.