



# Logitech Webcam Pro 9000 Teardown

Written By: I Heart Robotics



## INTRODUCTION

This is a step by step teardown of a Logitech webcam which is helpful if you are trying to build a [stereo camera](#) or adjust the focus.

Focus adjustments require making a [lens adjustment tool](#).



### TOOLS:

- [Desoldering Braid](#) (1)
  - [Lens Adjustment Tool](#) (1)
  - [Phillips #0 Screwdriver](#) (1)
  - [Phillips #00 Screwdriver](#) (1)
  - [Soldering Iron](#) (1)
-

## Step 1 — Logitech Webcam Pro 9000 Teardown



- Purchase a [Logitech QuicCam 9000 Pro](#)
- Remove webcam from box

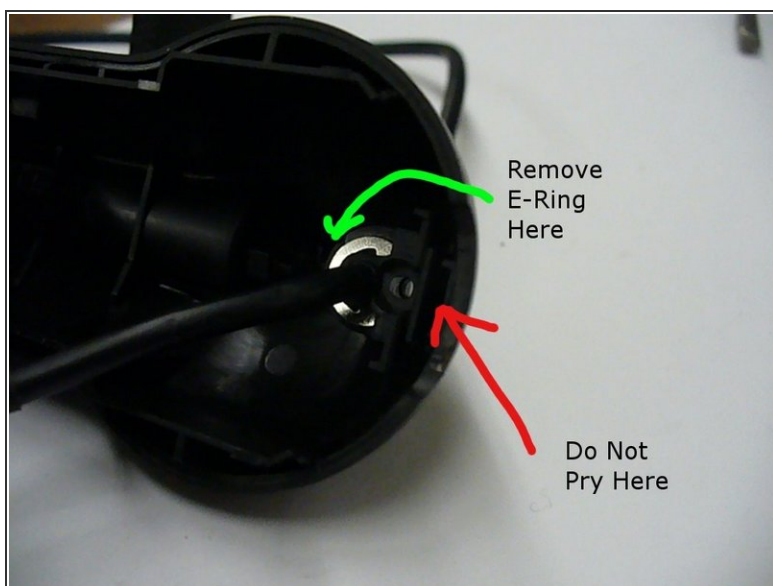
## Step 2



- Remove screws where shown by the green arrows.

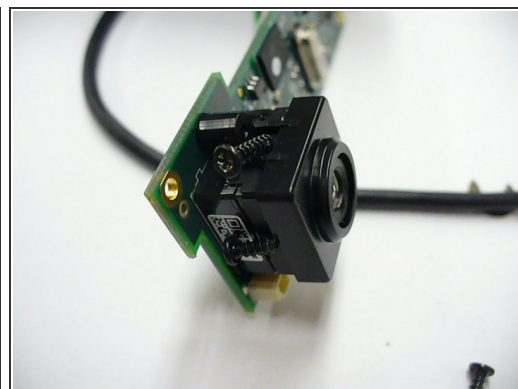
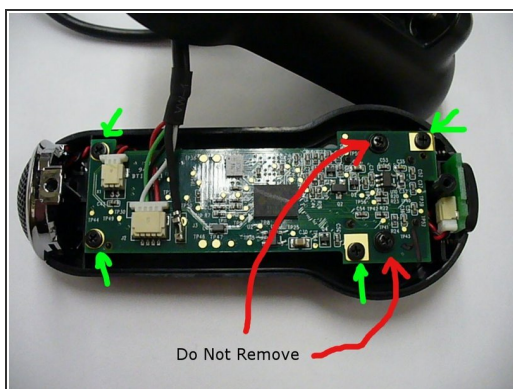


### Step 3



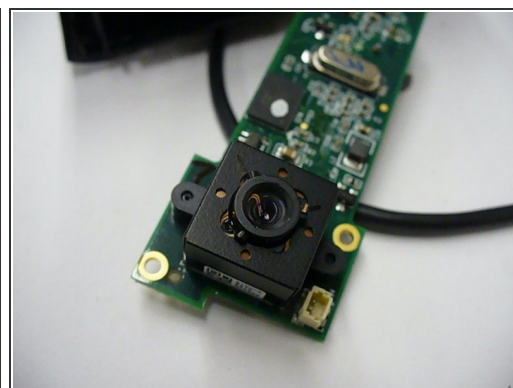
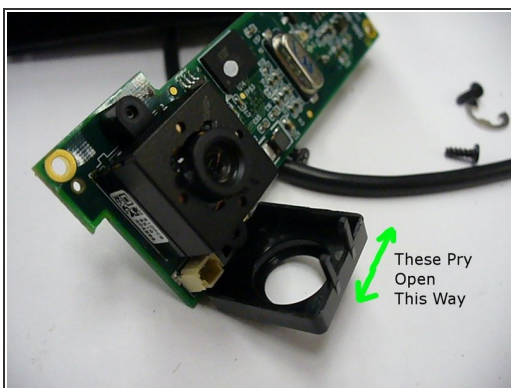
- Remove e-ring to detach grommet.

### Step 4



- Remove screws indicated by the green arrows.
- Do not remove the screws indicated by the red arrows at this point.
- Autofocus system contains magnets.

## Step 5



- Remove cover.

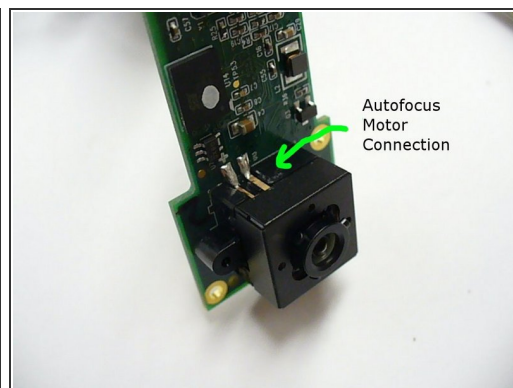
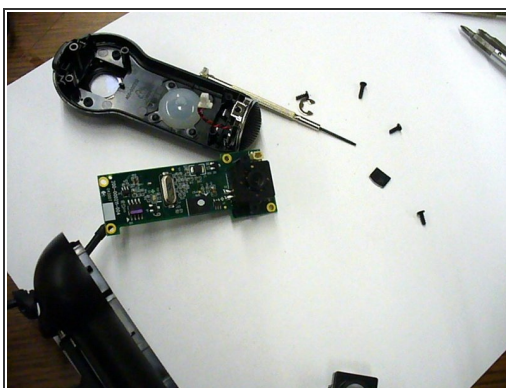
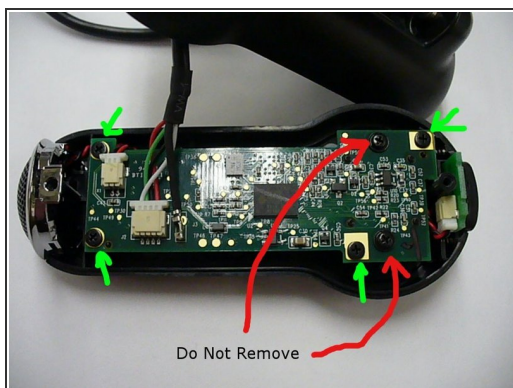
## Step 6



- [Lens adjustment tool](#) can be used to rotate the lens assembly to adjust or remove the lens.

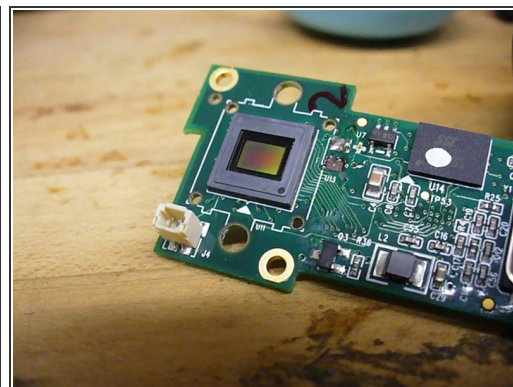
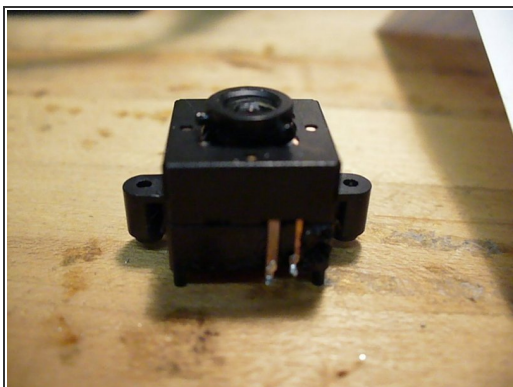


## Step 7



- The screws indicated in red can now be removed. The screws are glued into place and removal can be assisted by heating gently with a soldering iron.
- Autofocus motor connections can be removed by desoldering using desoldering braid where indicated.

## Step 8



- Almost done.

## Step 9



- The lens can be fully removed from the autofocus mount.
- The infrared filter looks to be difficult to remove.
- Further disassembly appears to be challenging.
- They did not need to glue it on because the magnets held it in place.
- The camera was fully reassembled and works.

To reassemble your device, follow these instructions in reverse order.