



Motorola DCT700 Teardown

A teardown of the Motorola DCT700 all-digital cable set top box

Written By: Tim Reimer



INTRODUCTION

A teardown of the Motorola DCT700 all-digital cable set top box

Step 1 — Motorola DCT700 Teardown



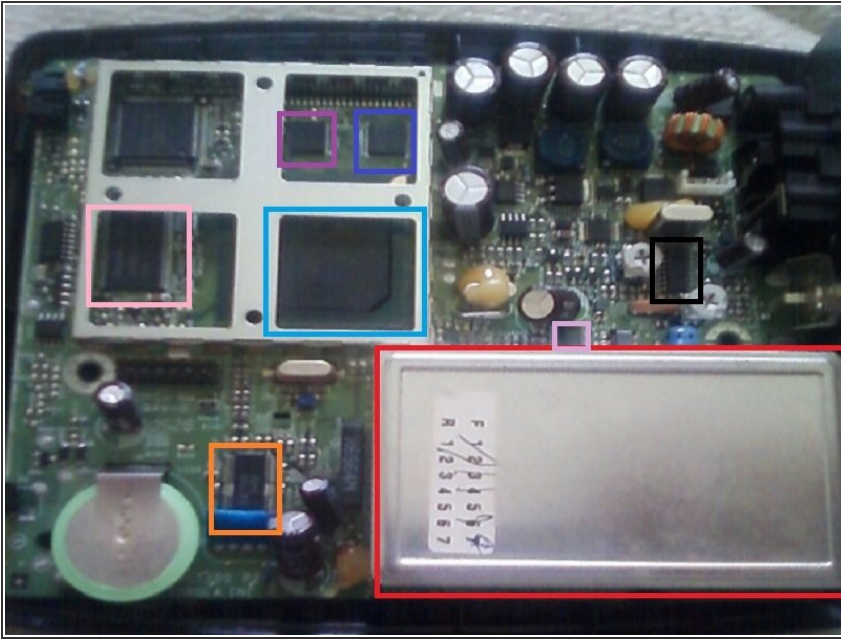
- This is Pic of the Device from Arris Website. Arris Group Acquired Motorola Mobility's Home Unit From Google for \$2.35 billion on December 19, 2012

Step 2



- Here is the Bottom the Set Top Box, There Two Screws and a Few Clips Holding the Box to Two Gether
- Red: This Sticker Lists off Patents 4,631,603 , 4,577,216 , 4,819,098

Step 3



- Red: TDER1-001A High Quality TV Tuner from Wansheng Electronic
- Light Blue: CX24462-11 Cable TV Decoder from Conexant Systems
- Purple: CY62137CVSL-70BAI 2M (128K x 16) Static RAM from Cypress
- Pink: HY5DU281622ET-5 128M(8Mx16) GDDR SDRAM from Hynix Semiconductor
- Blue: F320C380 3 Volt 32-MBIT Flash Memory from Intel
- Orange: LA7784 Downconverter for Digital CATV from Sanyo
- Light Purple: MAX3510 Upstream CATV Amplifier from Maxim Integrated Products
- Back: MC44BC375U PLL Tuned VHF Audio / Video Modulator from Freescale Semiconductor

Step 4



- Green: Now Here's Something Interesting, It's Custom Designed IC, Possibly Made by Motorola and Manufactured by Three or More Companies. This IC Can be Seen Many Set Top Boxes, What This IC Does Exactly is Unknown But Its Thought to be Scrambler and Descrambler
- My Only Source of Information is This Web Site: <http://id-discussions.com/forum/showthre...>

To reassemble your device, follow these instructions in reverse order.