



Samsung Galaxy S22 Ultra Earpiece Speaker & Vibration Motor Replacement

Follow this guide to remove or replace the...

Written By: Clay Eickemeyer



INTRODUCTION

Follow this guide to remove or replace the earpiece speaker and vibration motor in your Samsung Galaxy S22 Ultra.

TOOLS:

[Heat Gun](#) (1)

[iOpener](#) (1)

[Suction Handle](#) (1)

[iFixit Opening Picks \(Set of 6\)](#) (1)

[ESD Safe Blunt Nose Tweezers](#) (1)

[Phillips #00 Screwdriver](#) (1)

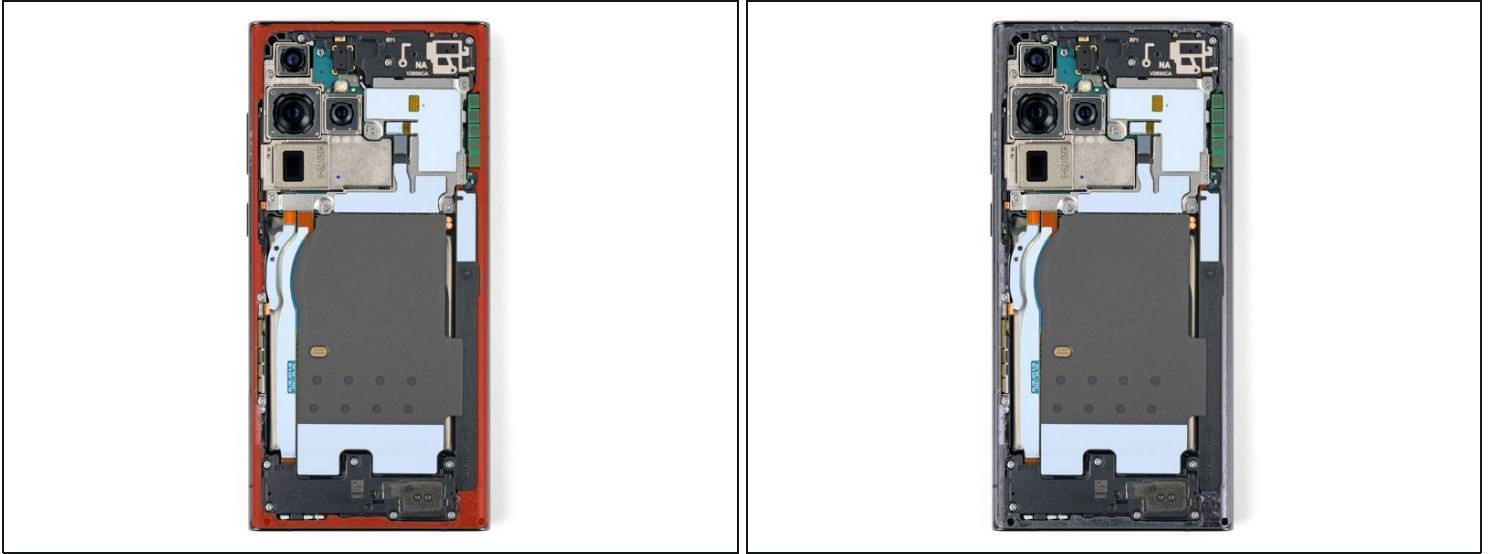
[Spudger](#) (1)

Step 1 — Heat the right edge



- [Heat an iOpener](#) and apply it to the right edge of the back cover for two minutes.
- ⓘ A [hair dryer](#), [heat gun](#), or hot plate may also be used, but be careful not to overheat the phone—the display and internal battery are susceptible to heat damage.

Step 2 — Adhesive information



- While you wait for the adhesive to soften, note the following:
 - There's adhesive securing the back cover around the perimeter of the frame.
- ① The adhesive is strongest in the bottom right and top left corners.

Step 3 — Insert an opening pick



- Apply a suction handle to the back cover, as close to the center of the right edge as possible.
- Pull up on the suction handle with strong, steady force to create a gap between the cover and the frame.
 - ① If you have trouble creating a gap, apply more heat to further soften the adhesive. Follow the [iOpener](#) instructions to avoid overheating.
- Insert an opening pick into the gap.

Step 4 — Slice the right adhesive



- Slide the pick back and forth along the right edge to slice through the adhesive.
- Leave the pick inserted near the bottom of the right edge to prevent the adhesive from resealing.

Step 5 — Heat the bottom edge



- Apply a heated iOpener to the bottom edge of the back cover for two minutes.

Step 6 — Separate the corner adhesive



- Insert a second opening pick at the bottom right corner.
- Angle the pick upward to match the curved edge and rotate it around the bottom right corner.
⚠ Be careful while slicing around the corners, as the glass is very fragile here. Work slowly to avoid cracking the glass.

Step 7 — Slice the bottom adhesive



- Slide your opening pick to the bottom left corner to slice the adhesive.
- Leave the pick in the bottom left corner to prevent the adhesive from resealing.

Step 8 — Heat the left edge



- Apply a heated iOpener to the left edge of the back cover for two minutes.

Step 9 — Separate the corner adhesive



- Insert a third opening pick at the bottom left corner.
 - Angle the pick upward to match the curved edge and rotate it around the bottom left corner.
- ⚠ Be careful while slicing around the corners, as the glass is very fragile here. Work slowly to avoid cracking the glass.

Step 10 — Slice the left adhesive



- Slide your opening pick along the left edge to slice the adhesive, stopping when you reach the power button.
⚠ Only insert the pick up to 5 mm, as you may damage the antenna flex cable or the power button cable.
- Leave the pick in the left edge to prevent the adhesive from resealing.

Step 11 — Heat the top edge



- Heat an iOpener and apply it to the top edge of the back cover for two minutes.

Step 12 — Separate the corner adhesive



- Insert an opening pick in the gap at the top right edge.
- Angle the pick upward to match the curved edge and rotate it around the top right corner.
⚠ Be careful while slicing around the corners, as the glass is very fragile here. Work slowly to avoid cracking the glass.

Step 13 — Slice the top adhesive



- Slide the pick to the top left corner to slice the adhesive.
⚠ Only insert the pick up to 4 mm, as you may damage the cameras or sensors.
- Leave the pick in to prevent the adhesive from resealing.

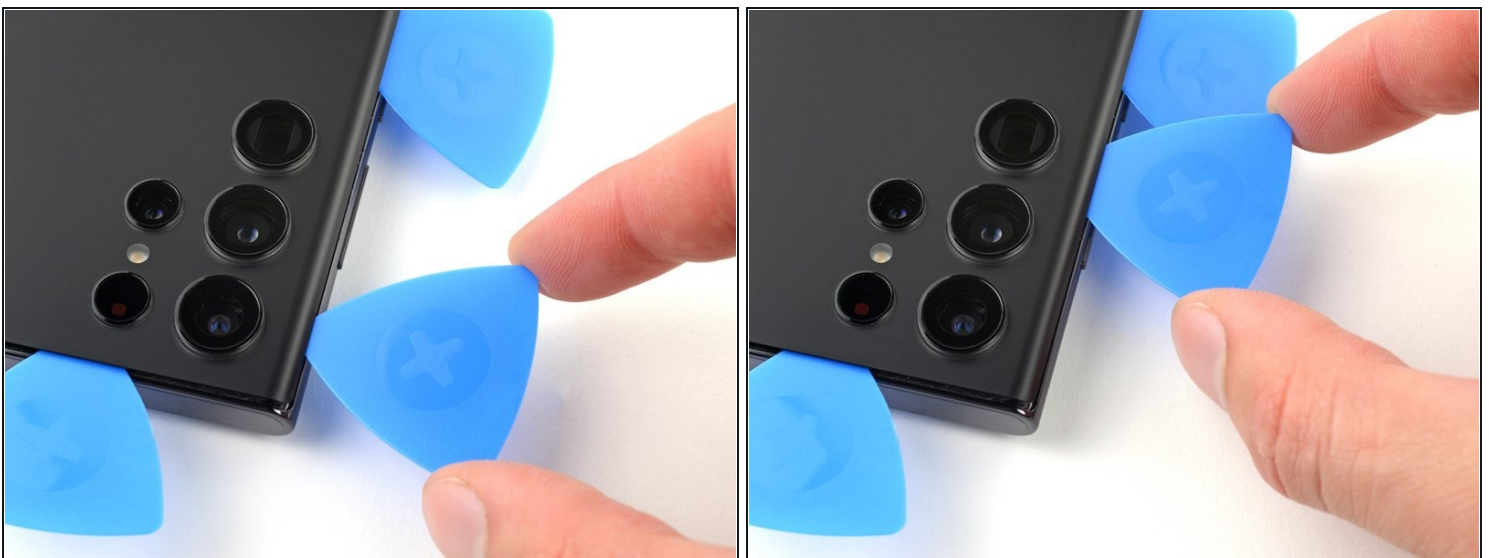
Step 14 — Separate the corner adhesive



⚠ Only insert the pick up to 4 mm, as you may damage the cameras.

- Insert an opening pick in the gap at the top left edge.
- Angle the pick upward to match the curved edge and rotate it around the top left corner.

Step 15 — Slice the remaining adhesive



⚠ Only insert the pick up to 4 mm, as you may damage the cameras.

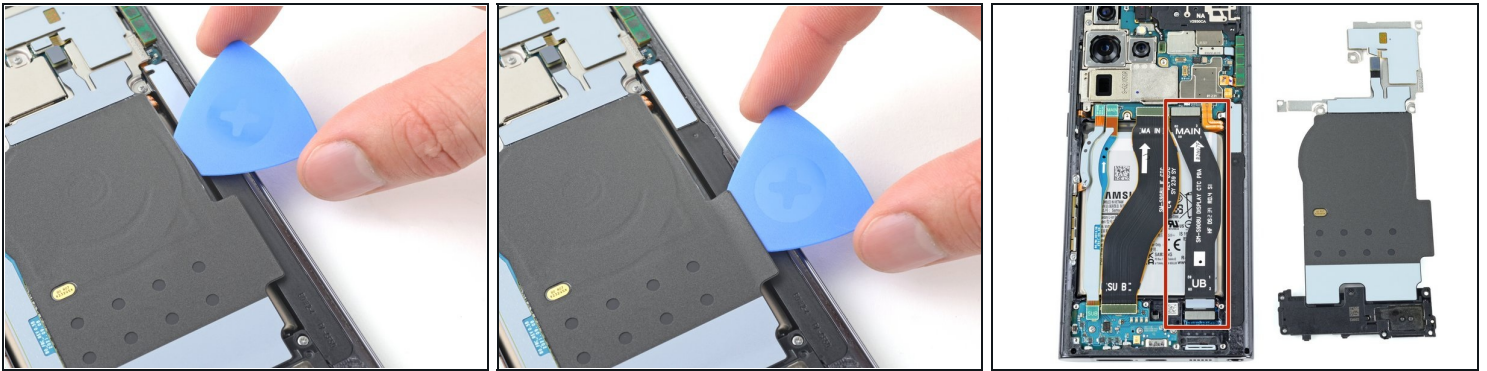
- Slide the pick toward the bottom camera to slice through the remaining adhesive, stopping before you reach the power button.

Step 16 — Remove the back cover



- Grab and remove the back cover.
 - ① If your cover is still sticking to the frame, slide an opening pick around the perimeter until the cover completely separates.
- ★ During reassembly:
 - This is a good point to power on your phone and test all functions before sealing it up. Be sure to power your phone back down completely before you continue working.
 - Remove any adhesive chunks with a pair of tweezers or your fingers. Apply heat if you're having trouble separating the adhesive.
 - If you're using Samsung custom-cut adhesives, [follow this guide](#).
 - If you're using double-sided tape, [follow this guide](#).

Step 17 — Slice the adhesive

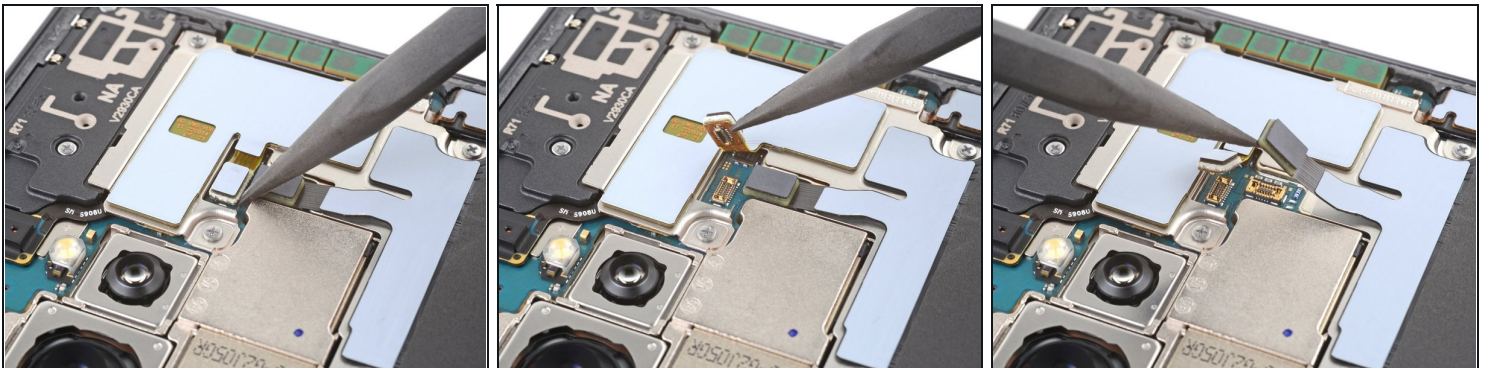


ⓘ The wireless charging coil is lightly adhered to the battery.

⚠ Be careful not to strain or tear the display interconnect cable under the right side of the charging coil.

- Insert an opening pick between the right edge of the wireless charging coil and the battery.
- Slide the pick along the right edge to separate the adhesive.

Step 18 — Disconnect the NFC antenna and charging coil



- Use the pointed end of a spudger to pry and disconnect the NFC antenna press connector from the motherboard.
 - Repeat for the wireless charging coil press connector.
- ⓘ To re-attach [press connectors](#), carefully align and press down on one side until it clicks into place, then repeat on the other side. Don't press down on the middle. If the connector is misaligned, the pins can bend and cause permanent damage.

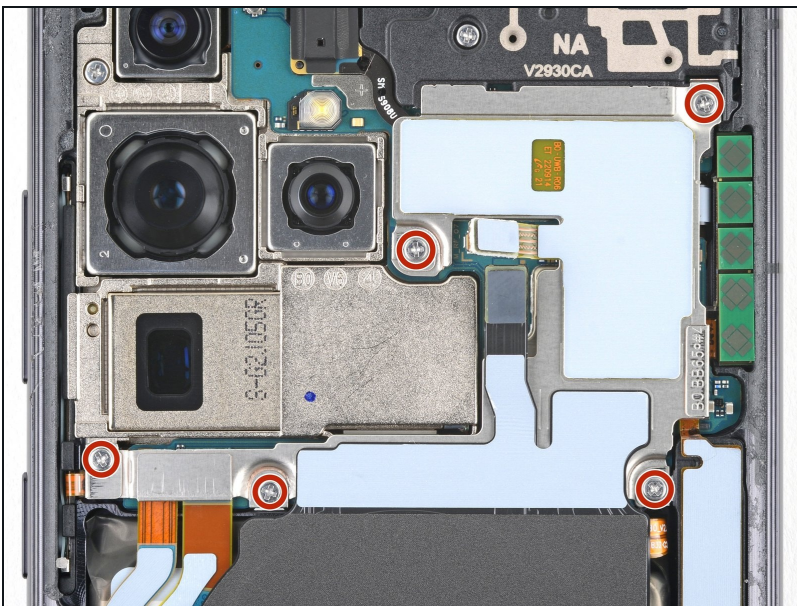
Step 19 — Identify your screws



i If you're using the Samsung Self Repair Kit, take a moment to identify your screws and label them accordingly:

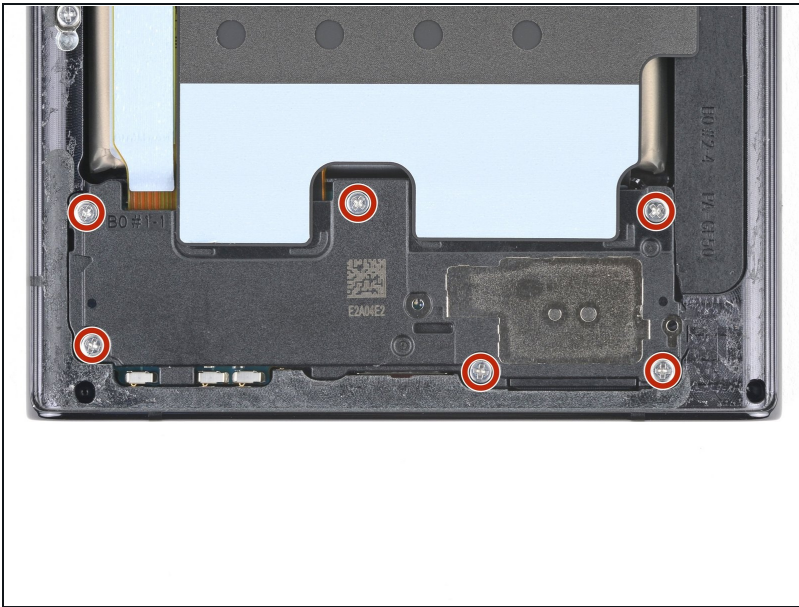
- Label the bag with the most screws and the colored bag **#3428**.
- If you're replacing the screen and battery, label the clear bag with two screws **#3439**.

Step 20 — Unfasten the NFC antenna and charging coil



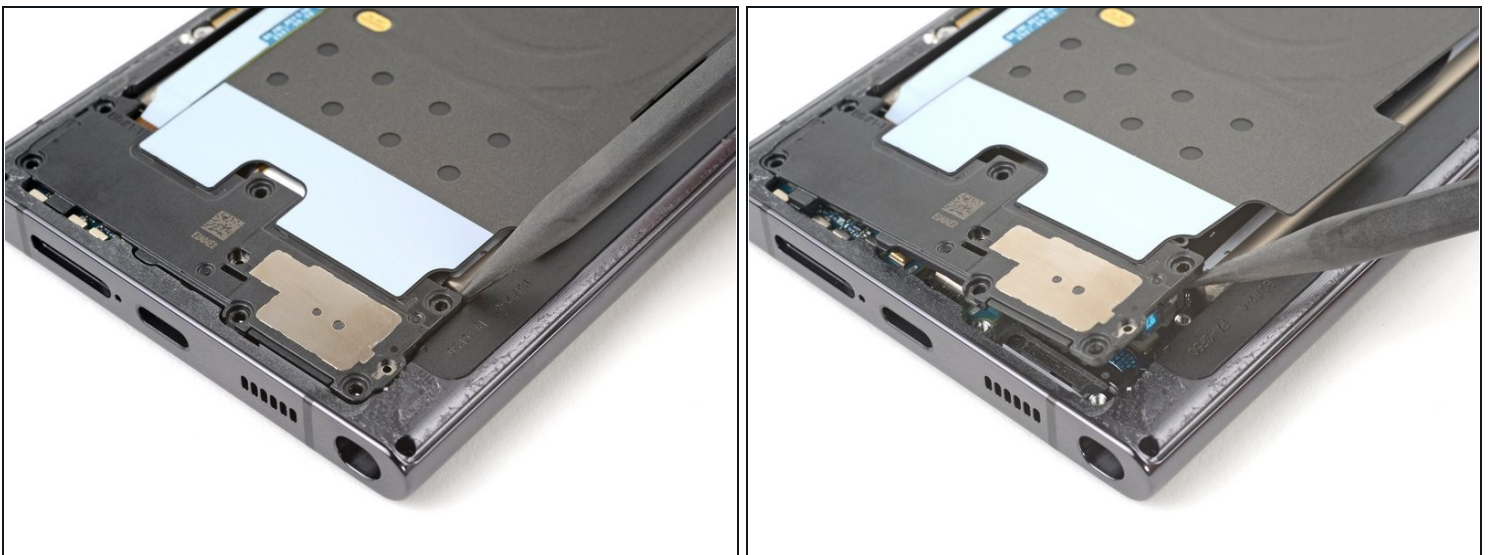
- Use your Phillips screwdriver to remove the five 3.5 mm-long screws securing the NFC antenna and charging coil.
- ★** If you're reassembling with the Samsung Self-Repair kit, be sure to replace the screws with the new ones labeled **#3428**.

Step 21 — Unfasten the loudspeaker



- Use your Phillips screwdriver to remove the six 3.5 mm screws securing the loudspeaker.
- ☑ If you're reassembling with the Samsung Self-Repair kit, be sure to replace the screws with the new ones labeled **#3428**.

Step 22 — Unclip the loudspeaker



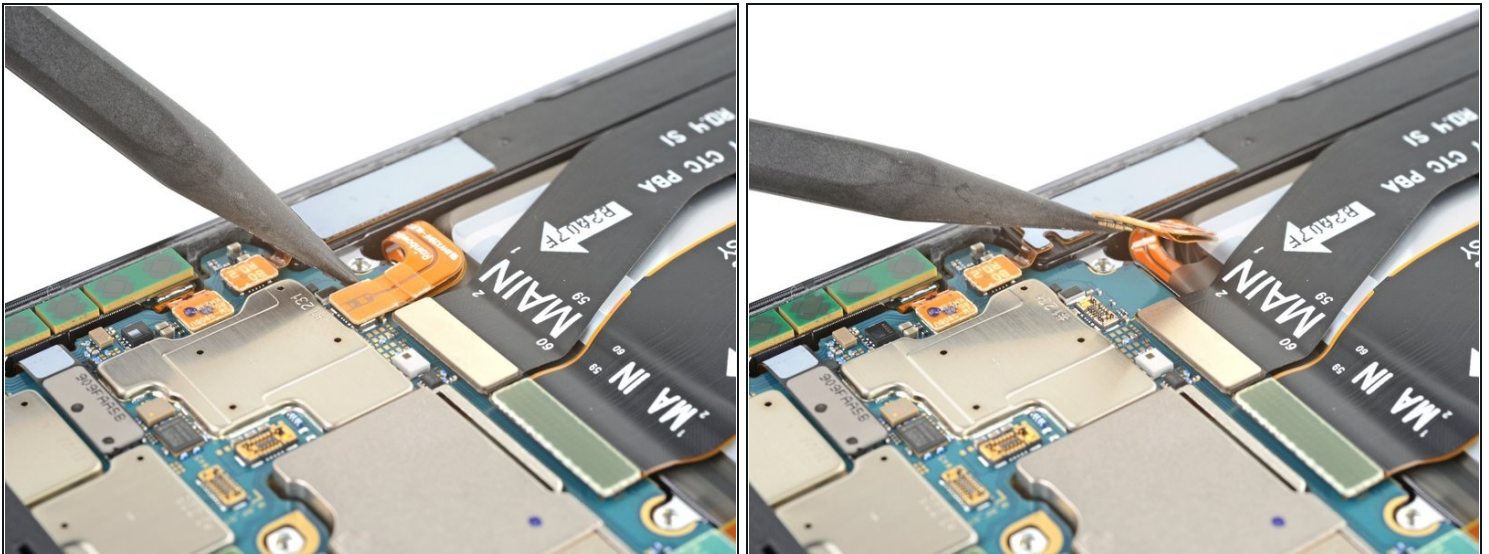
- Insert the pointed end of your spudger between the upper right corner of the loudspeaker and the frame.
- Pry up to unclip the loudspeaker from the frame.
⚠ Don't pry against the battery. Use protrusions in the frame for leverage.
- ☑ During reassembly, press around the perimeter of the loudspeaker to clip it to the frame.

Step 23 — Remove the charging coil and loudspeaker assembly



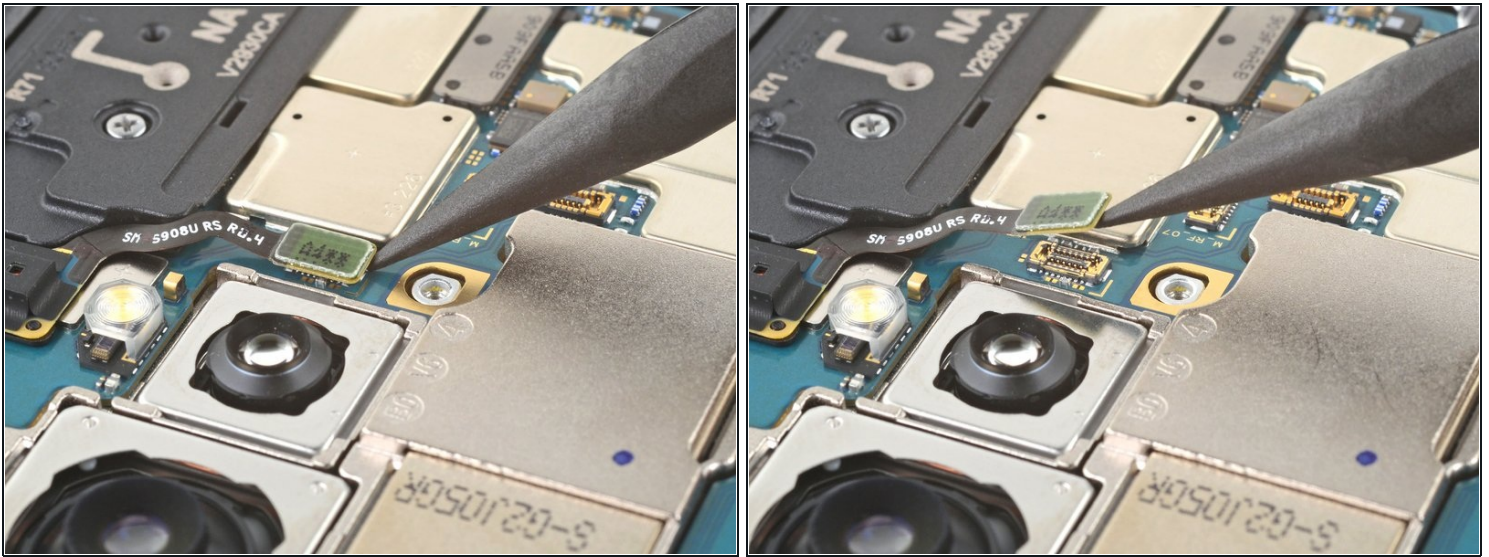
- Grab and remove the NFC, wireless charging coil, and loudspeaker from the frame.
 - ⓘ The wireless charging coil holds these parts together.

Step 24 — Disconnect the battery



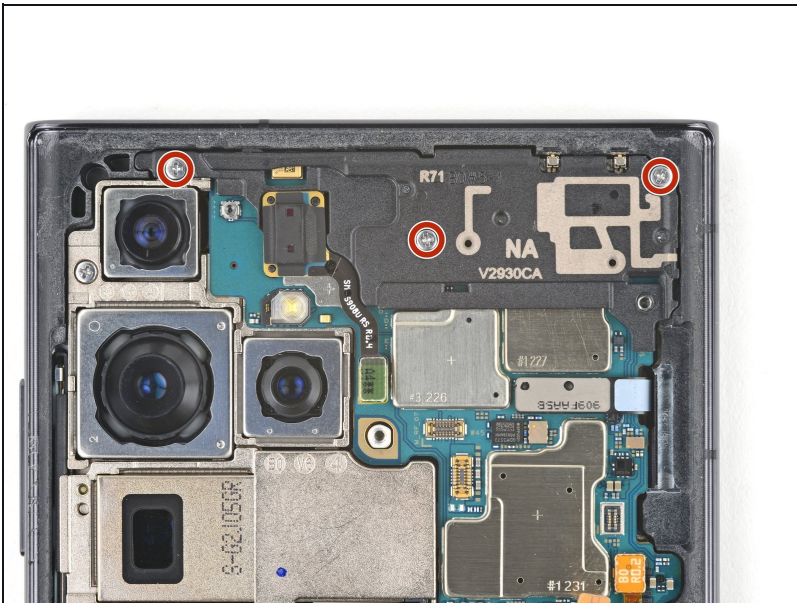
- Use the pointed end of your spudger to pry up and disconnect the battery press connector.

Step 25 — Disconnect the laser AF module



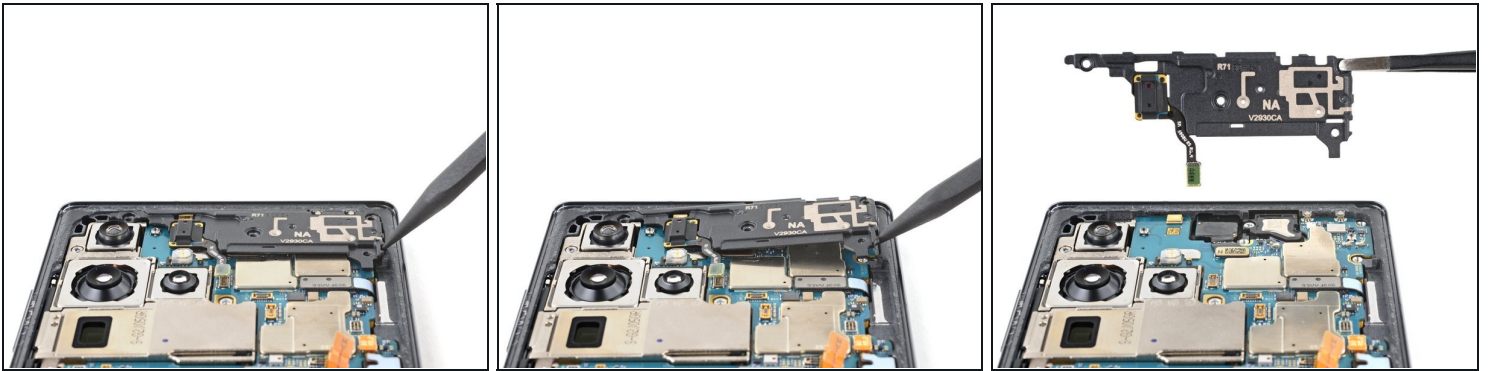
- Use the pointed end of your spudger to pry up and disconnect the laser autofocus module press connector.

Step 26 — Unfasten the motherboard cover



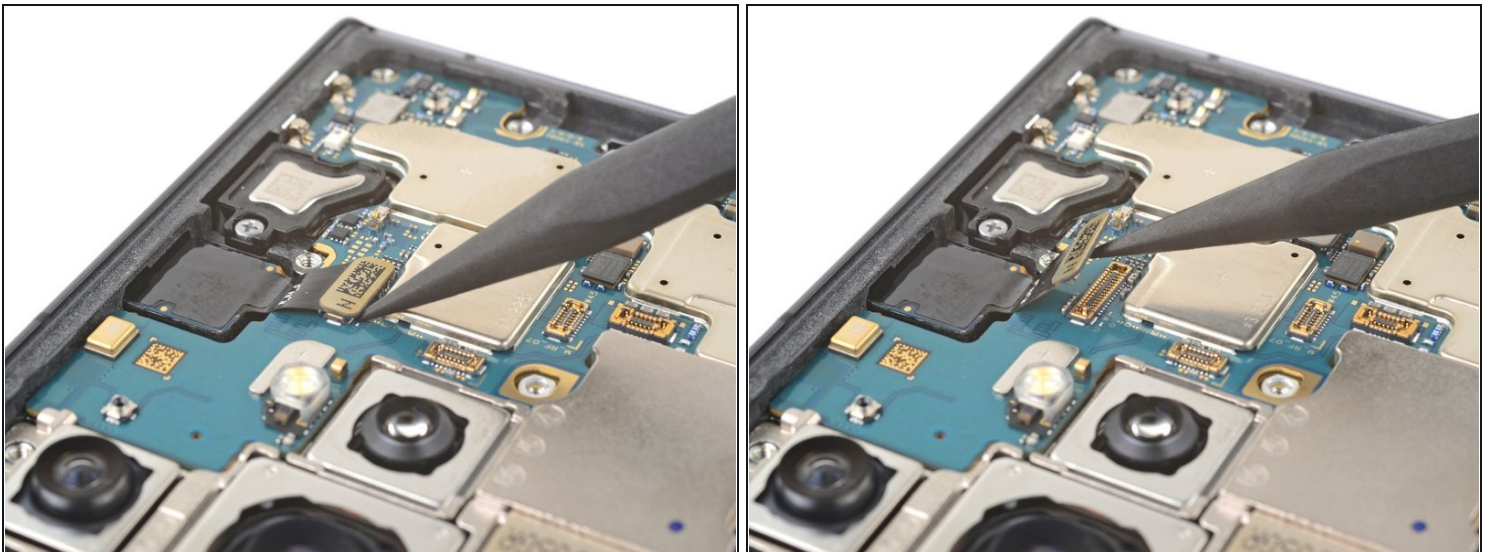
- Use your Phillips screwdriver to remove the three 3.5 mm-long screws securing the motherboard cover.
- ☑ If you're reassembling with the Samsung Self-Repair kit, be sure to replace the screws with the new ones labeled **#3428**.

Step 27 — Remove the motherboard cover and laser AF module



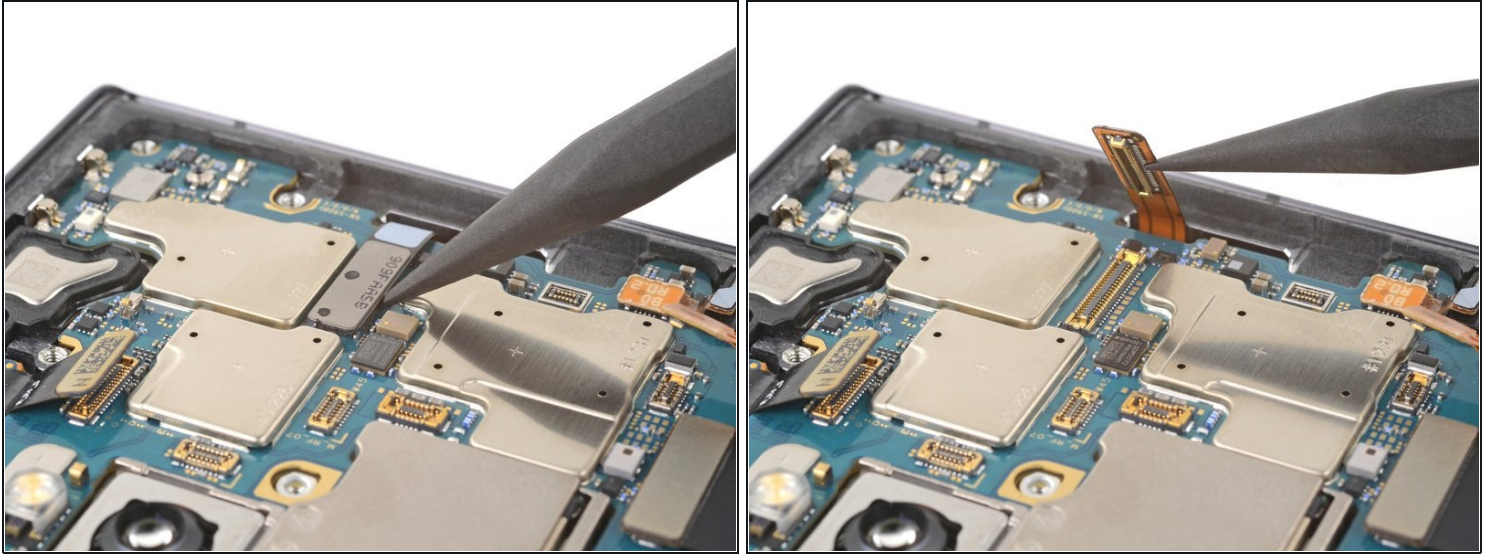
- Insert the pointed end of your spudger between the bottom right corner of the motherboard cover and the frame.
 - Pry up on the cover to unclip it from the frame.
 - Remove the motherboard cover and laser AF module.
- ☒ During reassembly, press down on the cover to secure its clips to the frame.

Step 28 — Disconnect the front-facing camera



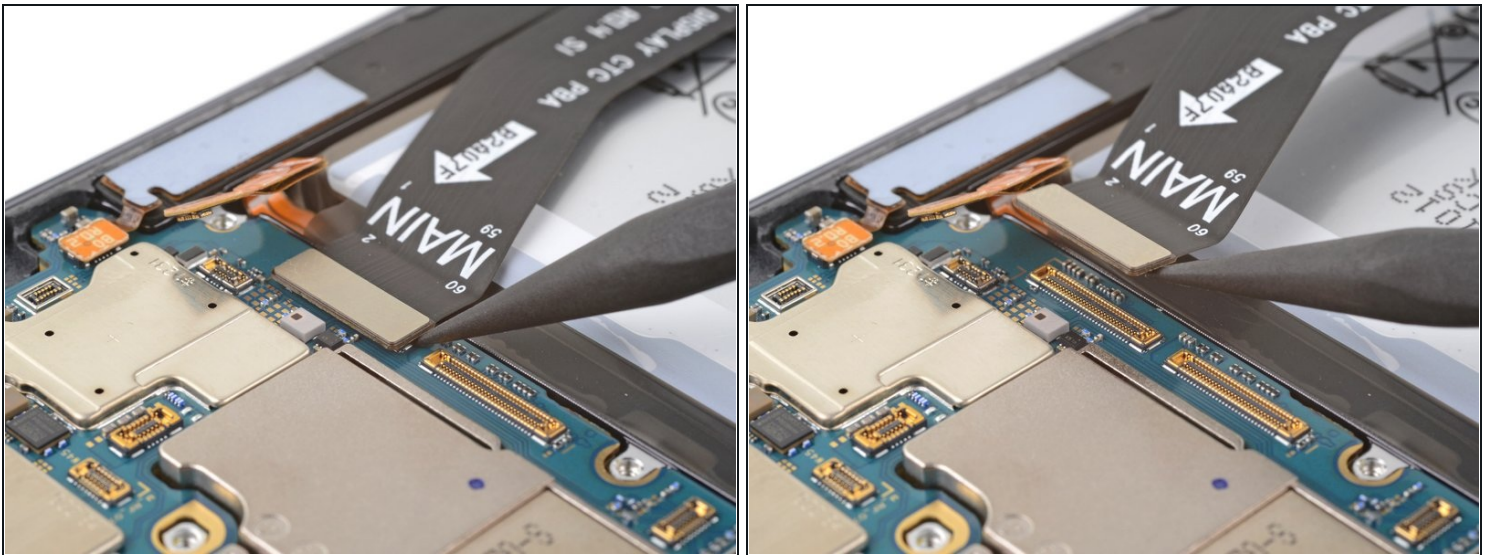
- Use the pointed end of your spudger to pry up and disconnect the front-facing camera press connector.

Step 29 — Disconnect the fingerprint reader



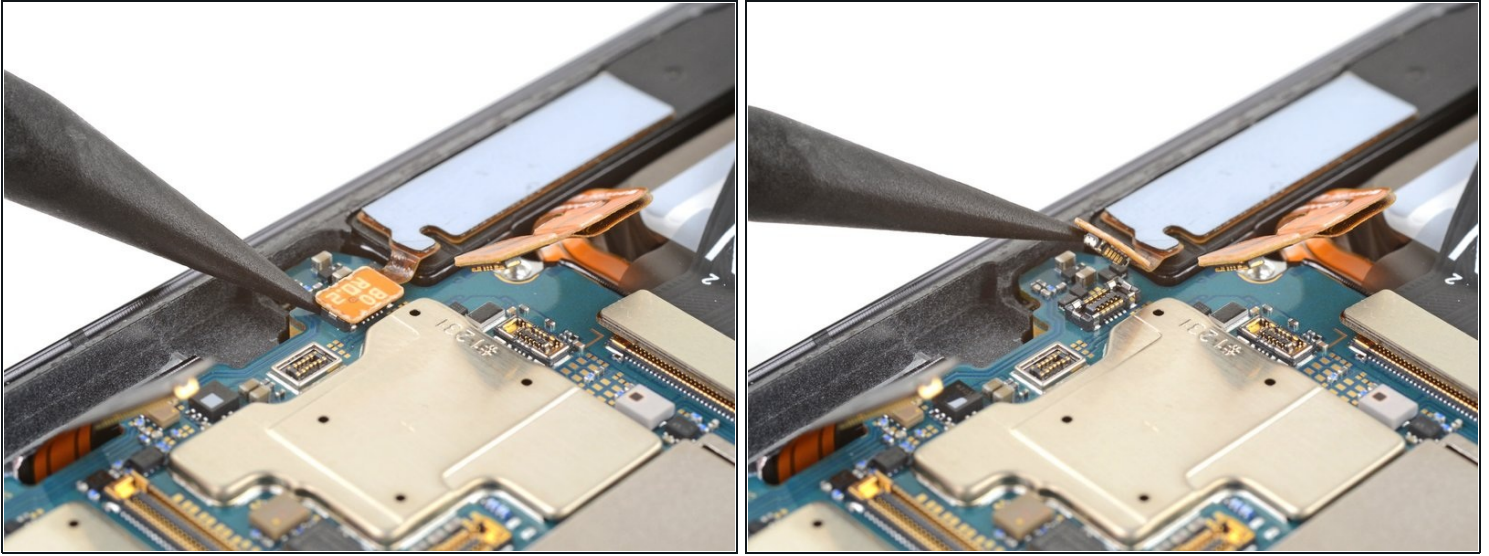
- Use the pointed end of your spudger to pry up and disconnect the fingerprint reader press connector.

Step 30 — Disconnect the screen



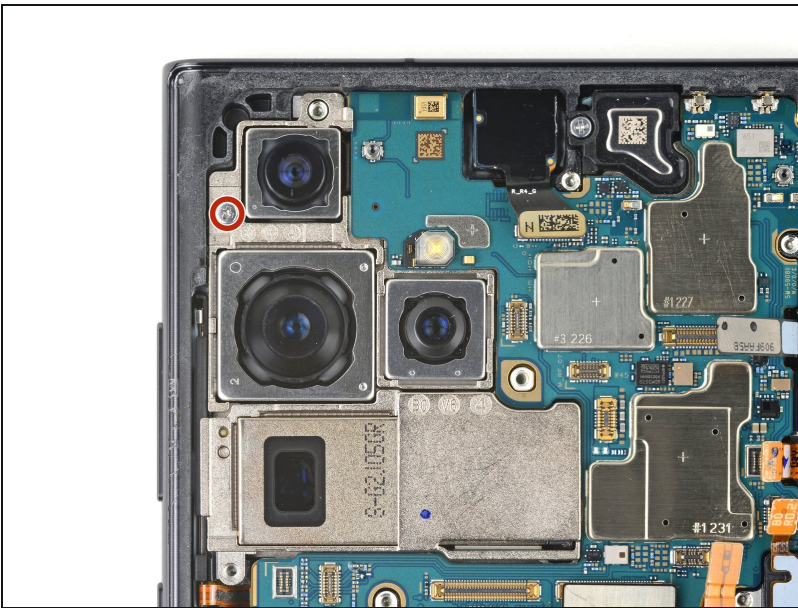
- Use the pointed end of your spudger to pry up and disconnect the screen press connector.

Step 31 — Disconnect the stylus



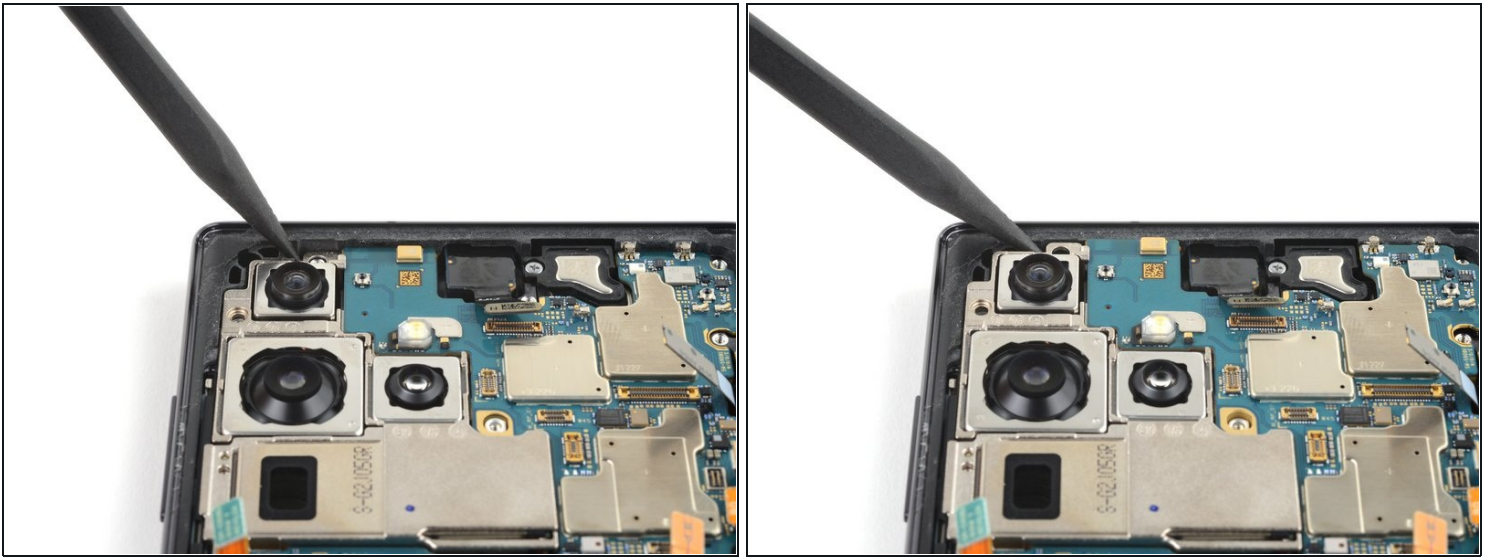
- Use the pointed end of your spudger to pry up and disconnect the stylus' press connector.

Step 32 — Unfasten the motherboard



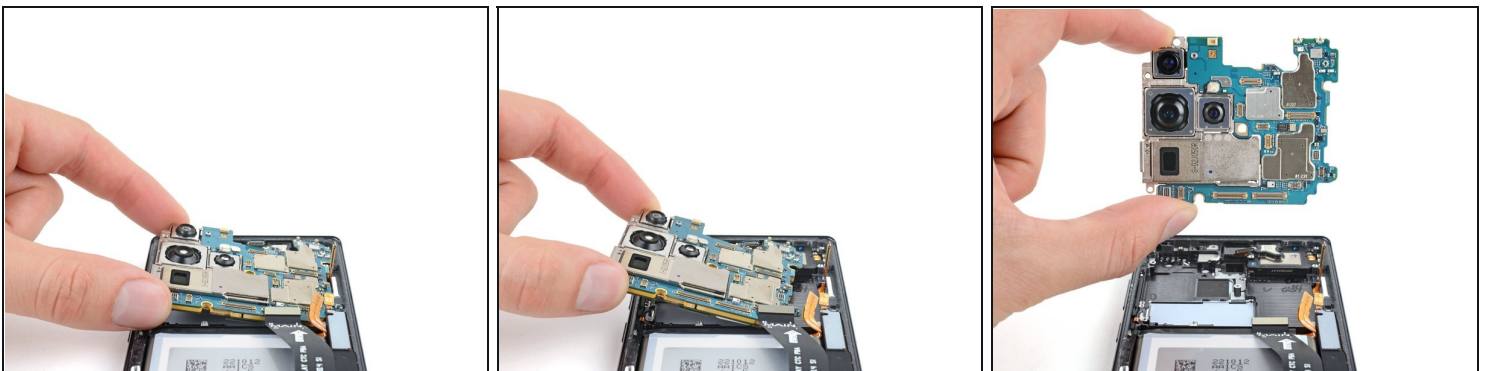
- Use your Phillips screwdriver to remove the 3.5 mm-long screw securing the motherboard.
- ★ If you're reassembling with the Samsung Self-Repair kit, be sure to replace the screw with the new one labeled **#3428**.

Step 33 — Pry the motherboard up



- Insert the pointed end of your spudger between the top left of the motherboard and the frame.
- Pry the motherboard up until you can grab it with your fingers.

Step 34 — Remove the motherboard

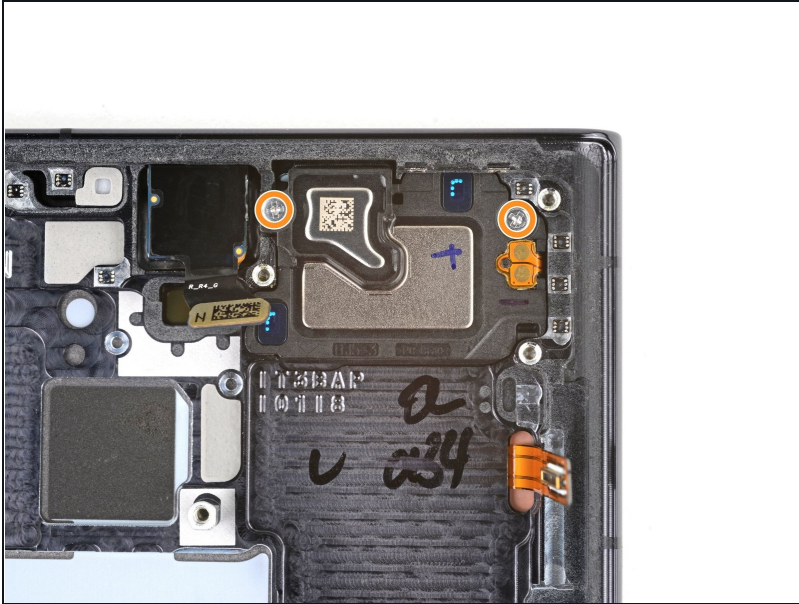


- Grab the motherboard by the left edge and remove it from the frame.

⚠ Be careful not to catch on any loose cables.

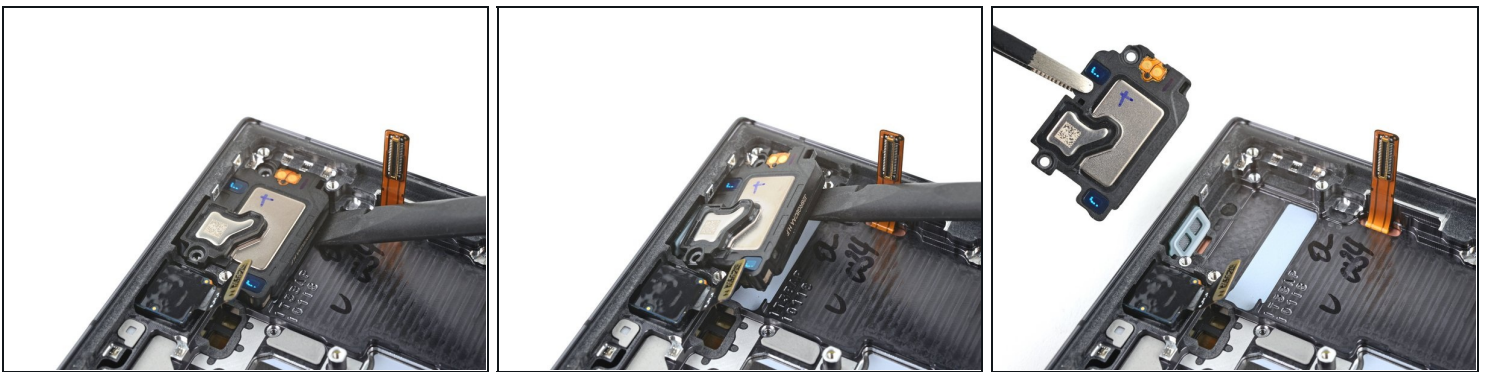
- ☑ During reassembly, be sure the cables are above the motherboard when reinserting it.

Step 35 — Unfasten the earpiece speaker and vibration motor



- Use your Phillips screwdriver to remove the two 3.2 mm-long screws securing the earpiece speaker and vibration motor.
- ★ If you're reassembling with the Samsung Self-Repair kit, be sure to replace the screws with the new ones labeled **#3439**.

Step 36 — Remove the earpiece speaker and vibration motor



- Insert the flat end of your spudger underneath the bottom edge of the earpiece speaker and vibration motor.
- Pry the earpiece speaker and vibration motor up from its recess and remove it.

To reassemble your device, follow the instructions in reverse order and perform the opposite actions, e.g., "reattach" instead of "removing." Skip steps that use heating and prying, and pay close attention to the bullets as you work through the steps.

After you've completed the repair, download the Samsung Members App from the Galaxy Store or the Play Store, and [follow the Samsung Self-Repair document](#) (beginning page 9) to make sure your device is fully functional.

Take your e-waste to an [R2 or e-Stewards certified recycler](#).

Repair didn't go as planned? Check out our [Answers community](#) for troubleshooting help.