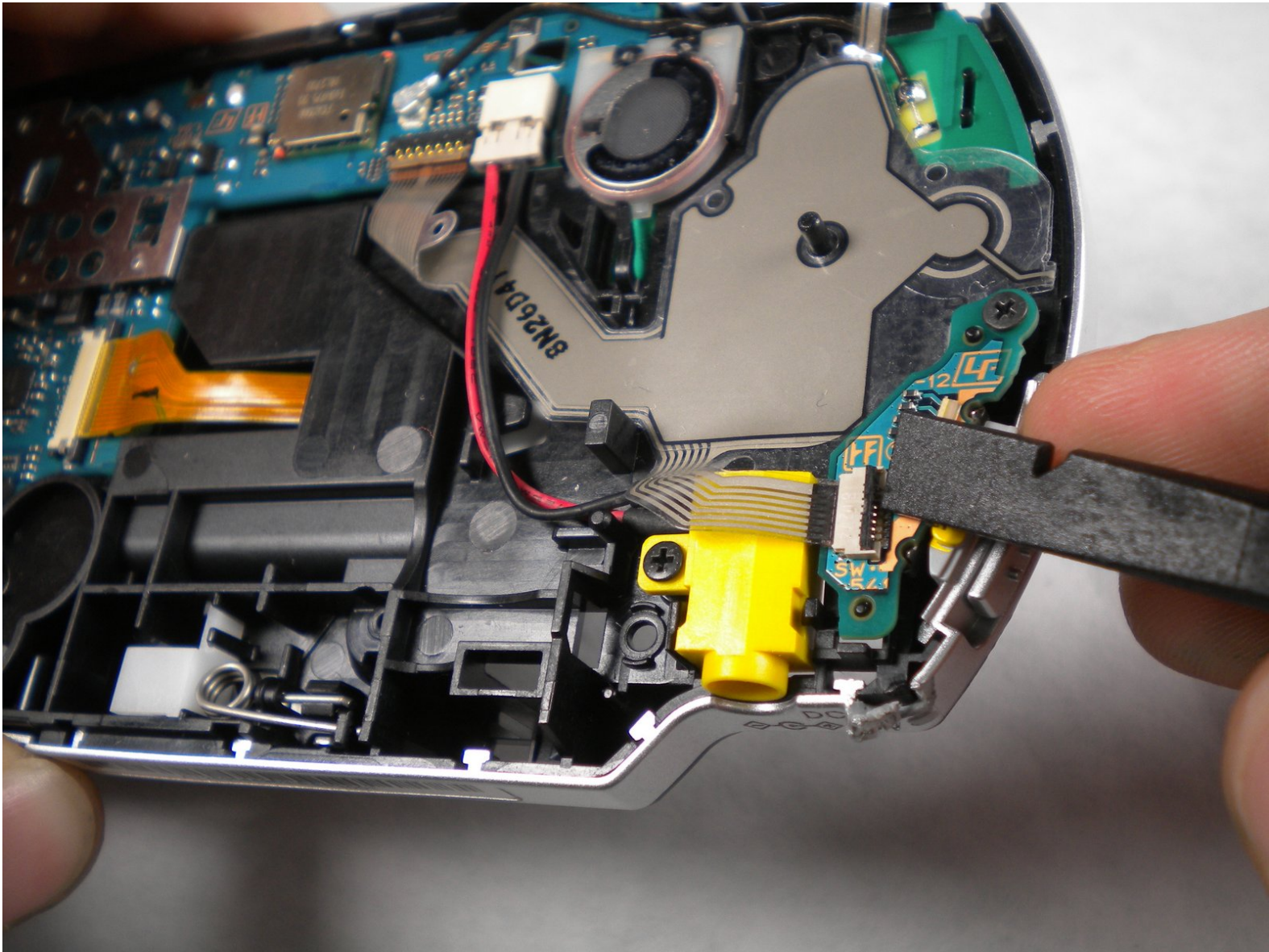




# PSP 300x Power Jack Replacement

Guide for removing the power jack from a Sony...

Written By: mbnewsom



# INTRODUCTION

Guide for removing the power jack from a Sony PSP-3000

<div> <b>TOOLS:</b></div> <div><ul style="list-style-type: none"><li>• <a href="#">Phillips #00 Screwdriver</a> (1)</li><li>• <a href="#">Spudger</a> (1)</li></ul></div>	<div><div></div> <b>PARTS:</b></div> <div><ul style="list-style-type: none"><li>• <a href="#">Sony PSP 3000 DC-In Power Jack</a> (1)</li><li>• <a href="#">Sony PSP 2000 DC-In Power Jack</a> (1)</li></ul></div>
--	--

## Step 1 — Battery



- Place the PSP face down and locate the battery cover on the left side of the device.
- Lift and remove the battery cover to reveal the battery.
- Remove the battery.

## Step 2 — Casing



- Peel back the warranty sticker that is behind the battery with a spudger or your fingernail.

### Step 3



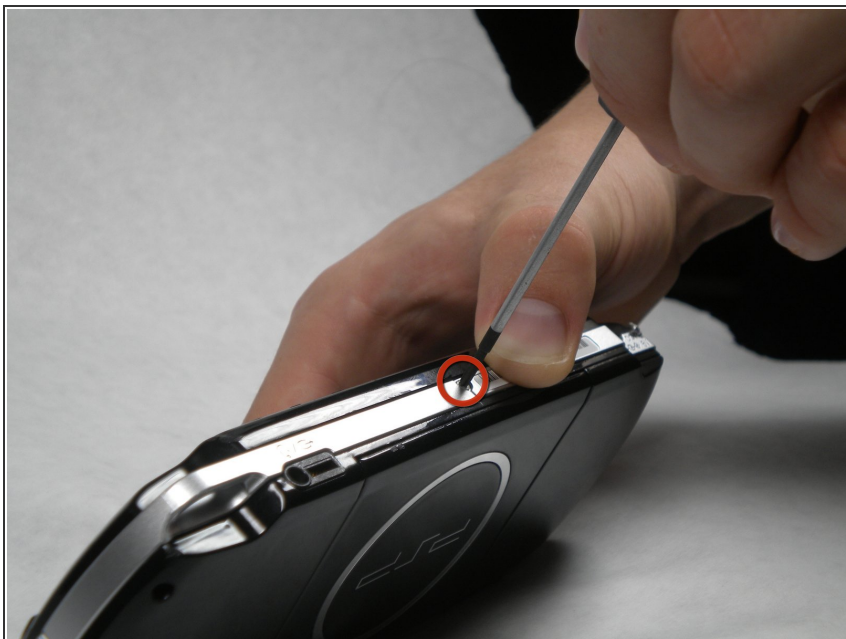
- Unscrew all four screws from the back of the PSP with the Phillips #00 Screwdriver.
  - Two are located behind the battery's warranty sticker.
  - Two are located on the right side of the PSP.

### Step 4



- Next, unscrew the two screws located at the top of the PSP.

## Step 5



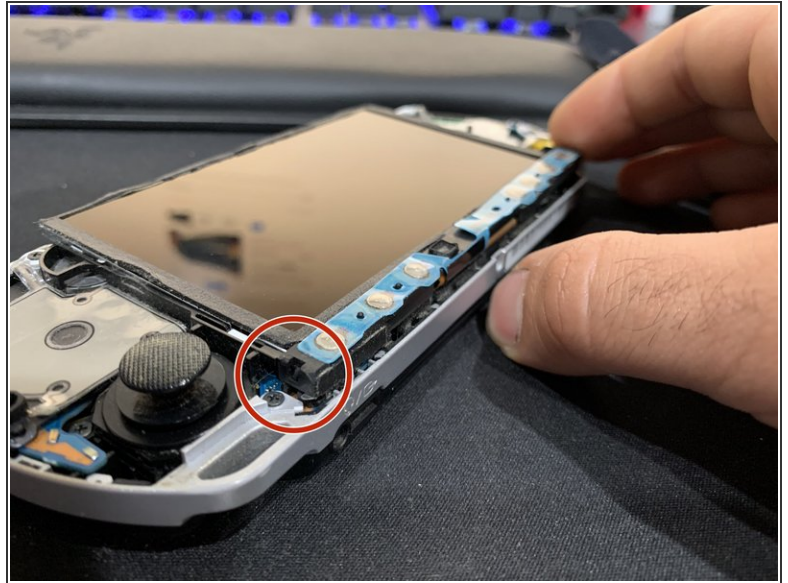
- Then, remove the single screw from the bottom edge of the PSP (which is positioned next to the barcode).

## Step 6



- Slide the spudger in between the outer casing of the PSP, beginning at the "R" shoulder button, and gently pry off the casing.
- Remove the front casing completely.

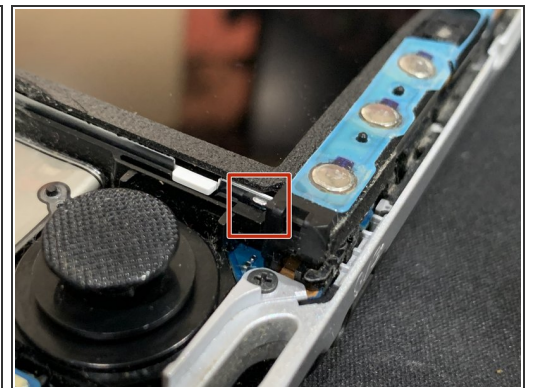
## Step 7 — LCD Screen



- Push the homebar to the right to release the tab located on the right side of the LCD screen.

⚠ DO NOT completely remove the homebar, as it is still connected by ribbon cables.

## Step 8

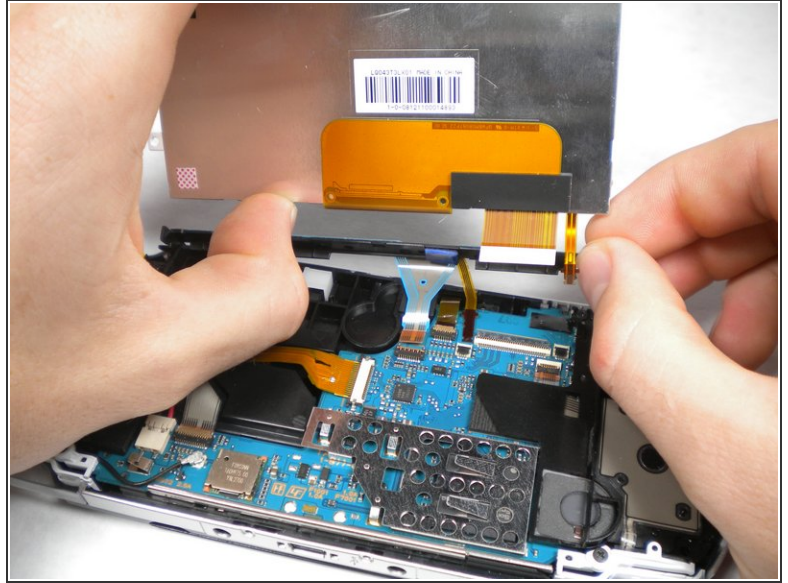
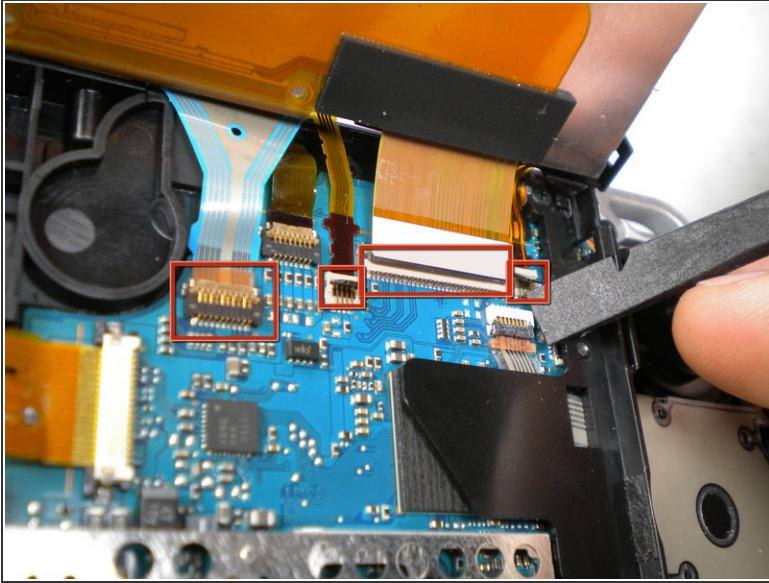


- Slowly lift the LCD screen off the PSP starting at the top edge corner.

⚠ Again, the LCD screen is attached by ribbon cables, so do not remove it completely.

ⓘ Orientation of PSP is flipped in photo.

## Step 9



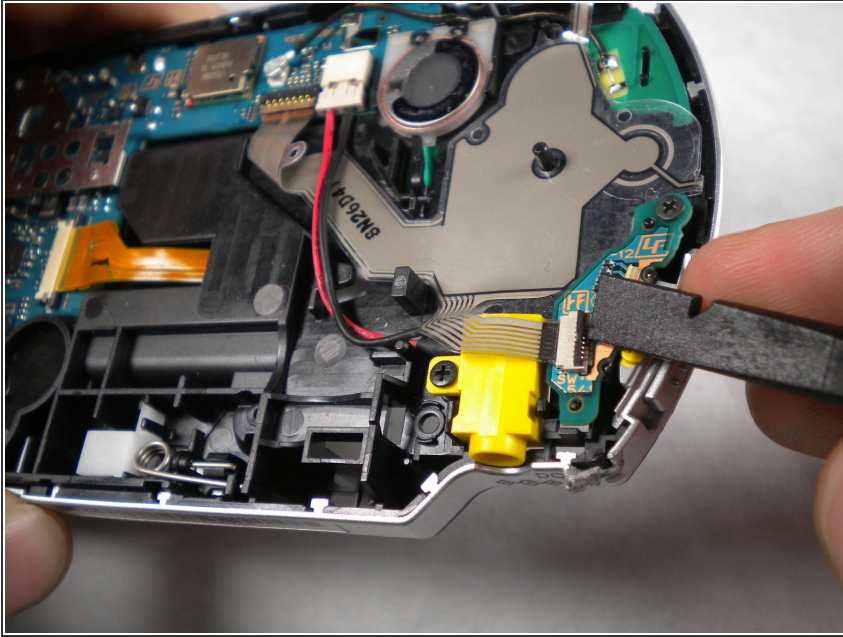
- Flip the small brown locks on the four ribbon cable connectors up using a spudger or fingernail.
- Pull all four ribbon cables out.
- Now remove the LCD screen and homebar from the PSP.

## Step 10



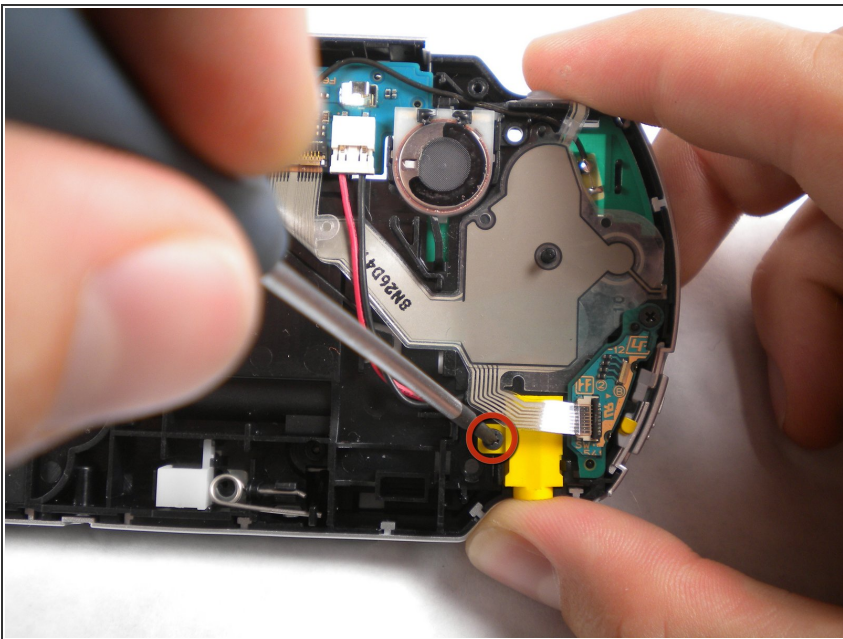
- Remove the metal tab that lies above the LCD screen.
- ☑ Upon reassembly, make note that the stamped lettering faces down, and the large tab fits just above the motherboard to the right hand side of the left trigger.

## Step 11 — Power Jack



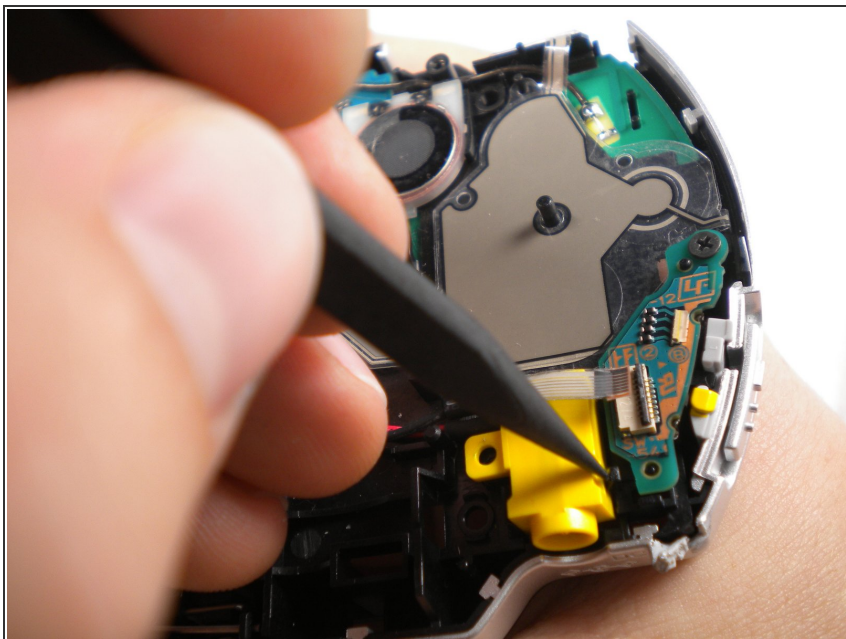
- Flip up the lock and detach the ribbon cable above the power jack.

## Step 12



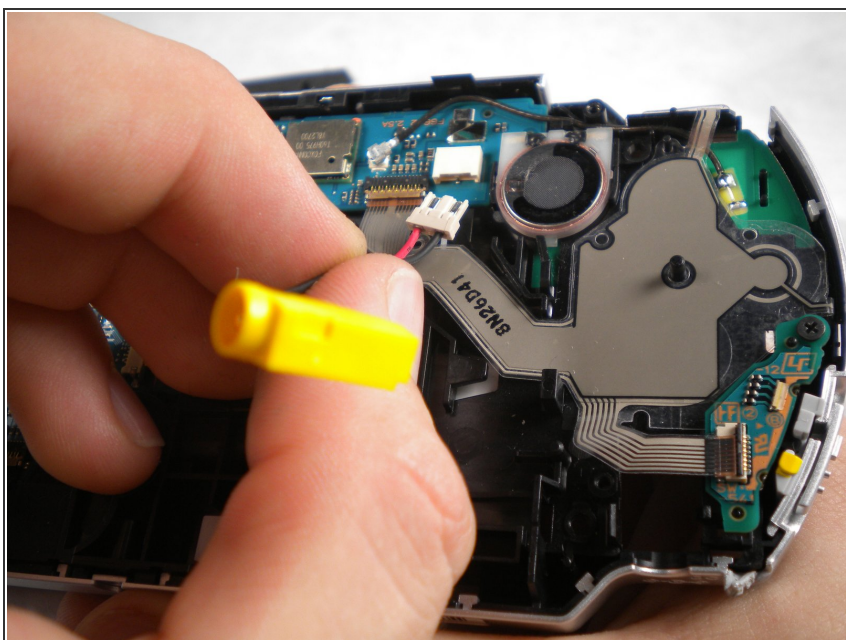
- Remove the screw from the power jack.

## Step 13



- Carefully bend back the black tab holding the power jack in place and start pulling the jack up to release it from this clip.

## Step 14



- Pull the plug connecting the power jack to the motherboard.
- Remove the power jack.

To reassemble your device, follow these instructions in reverse order.