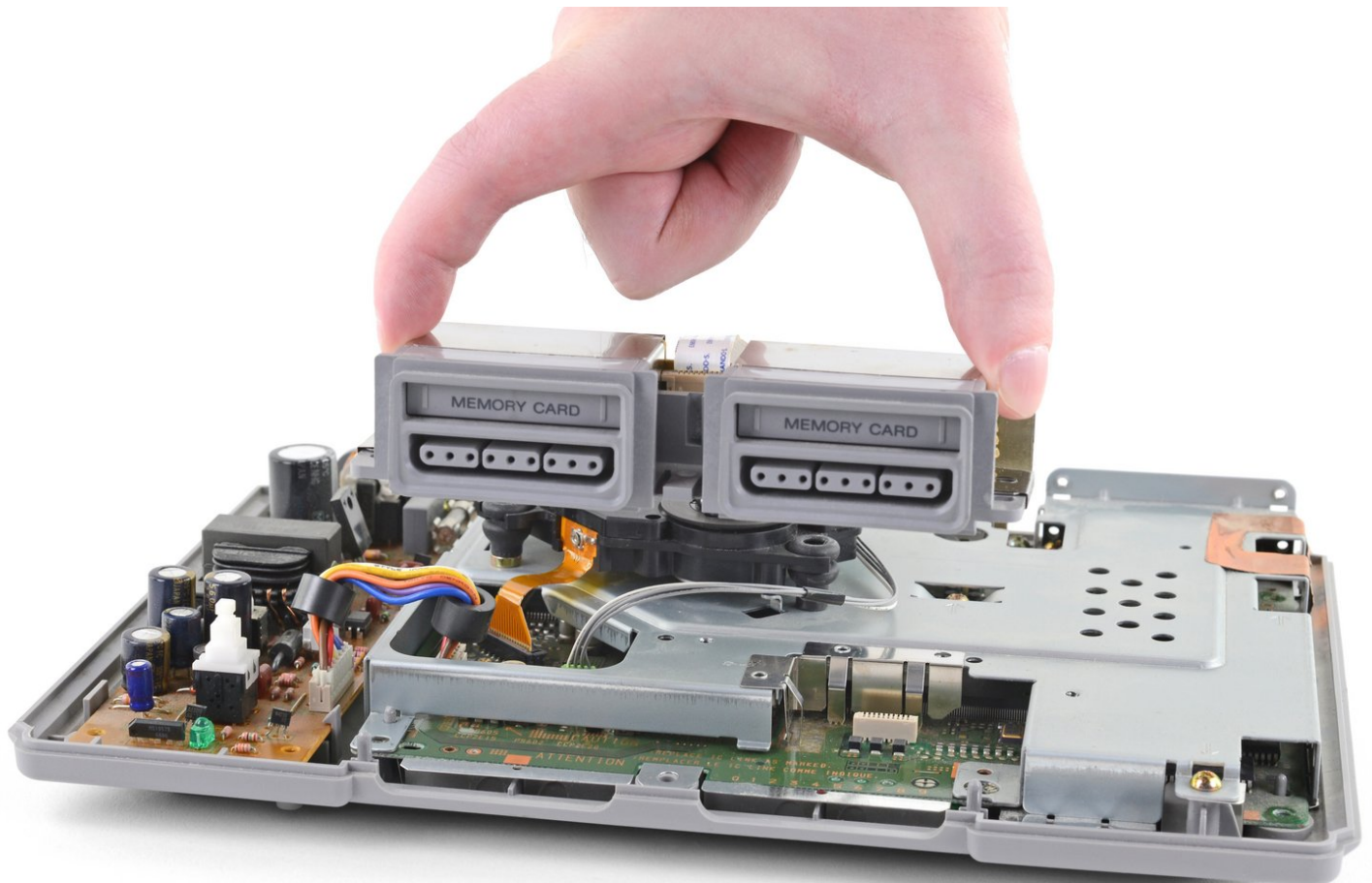




PlayStation Controller Ports Replacement

Replace the worn-out or faulty controller ports on your PlayStation game console.

Written By: Craig Lloyd



INTRODUCTION

If your PlayStation is no longer registering controller input or recognizing memory cards, it may be time to replace the controller ports on the console. This guide will take you through the process of replacing this component, which includes the controller ports and the memory card slots in one assembly.

Note: This repair is demonstrated on a SCPH-1001 model. The process may differ slightly if you have a later model.



TOOLS:

- [Phillips #1 Screwdriver](#) (1)
-

Step 1 — Open the Console



⚠ Before you begin, make sure the console is turned off and unplugged.

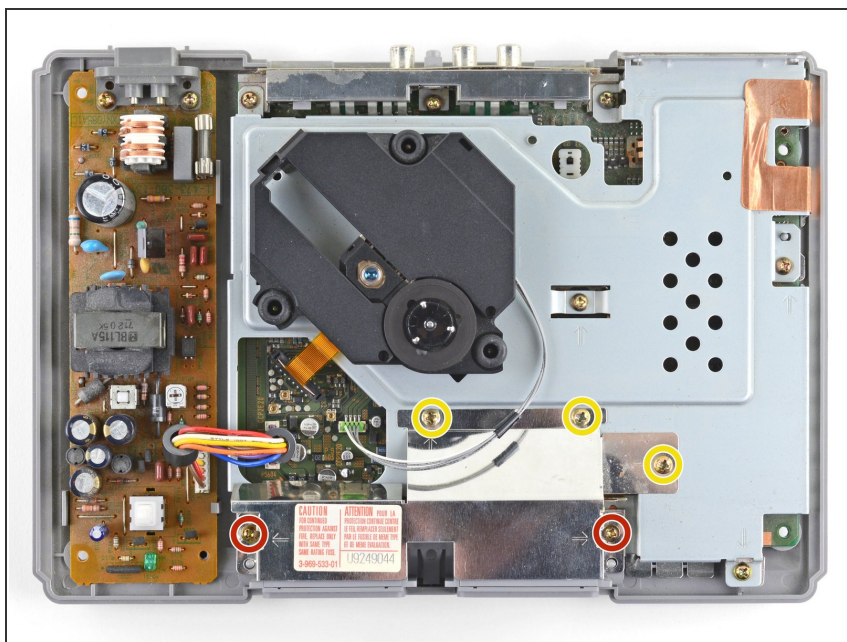
- Turn the console upside down and remove the five 15.8 mm-long Phillips #1 screws.

Step 2



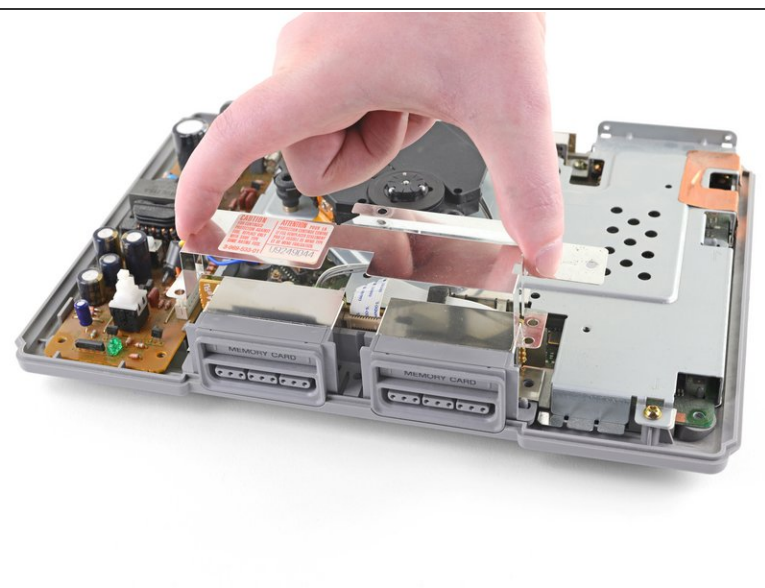
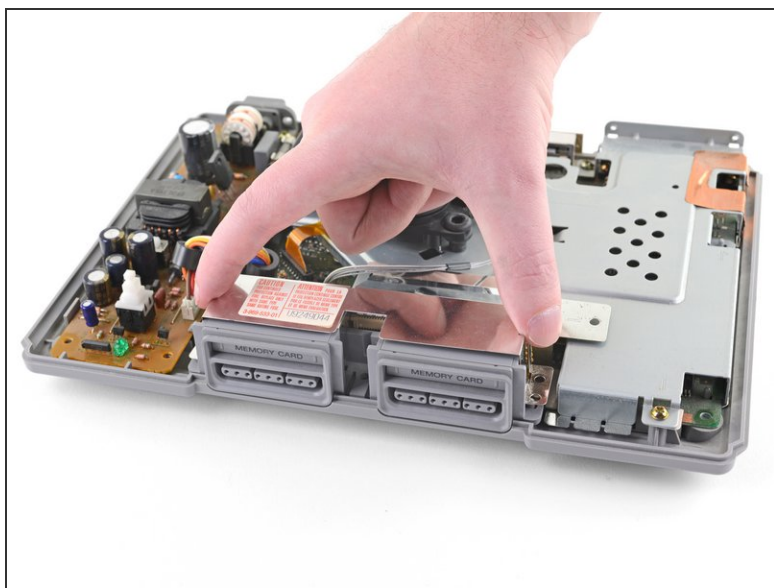
- While holding the top and bottom halves of the console together, flip the console back over. Lift the top cover straight up to remove it.

Step 3 — Remove the Controller Ports



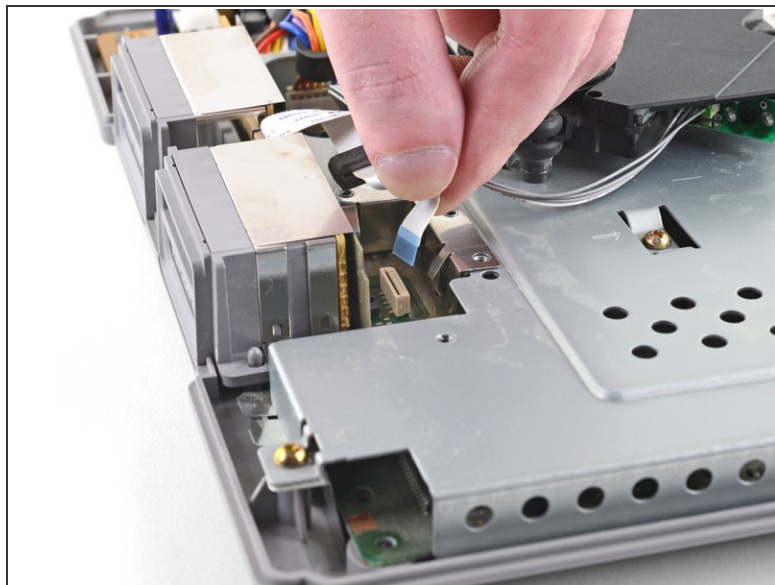
- Remove five Phillips #1 screws securing the metal shield to the controller ports:
 - Two 14 mm screws
 - Three 8 mm screws

Step 4



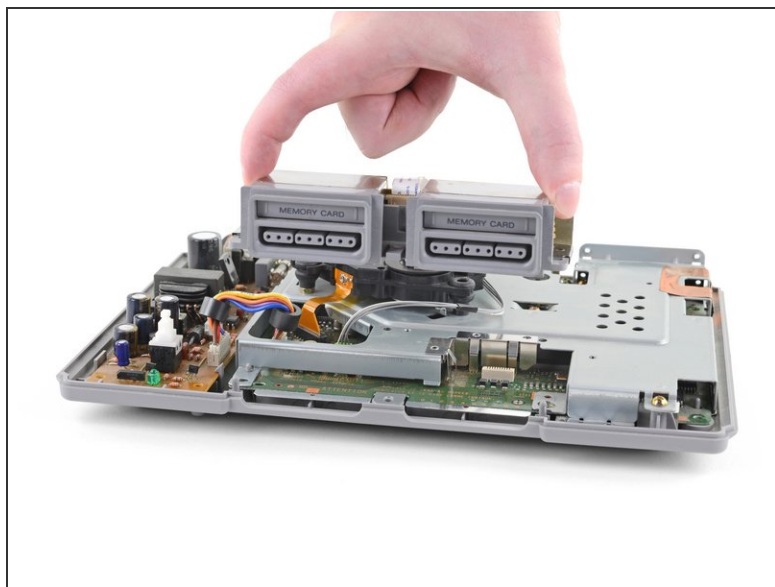
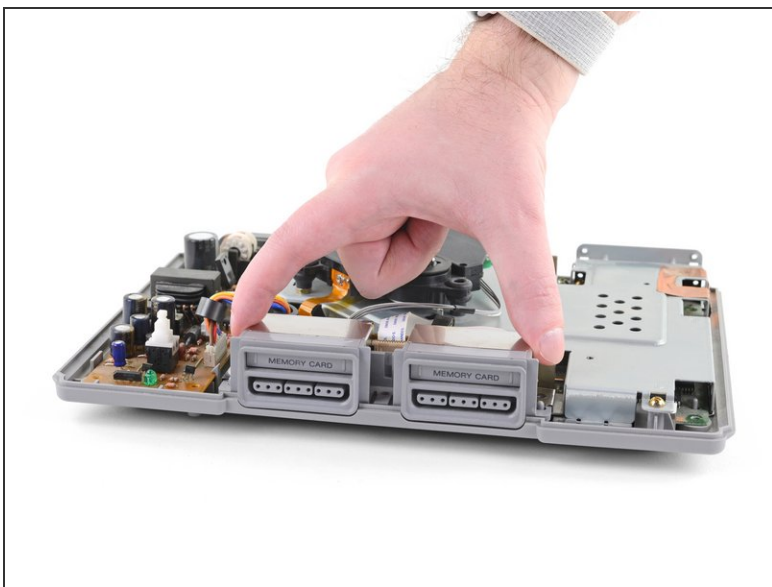
- Lift the metal shield straight up to remove it.

Step 5



- Pull the controller port's ribbon cable straight up and out of its socket on the motherboard to disconnect it.

Step 6



- Lift the controller ports straight up and out of the bottom case.

Compare your new replacement part to the original part—you may need to transfer remaining components or remove adhesive backings from the new part before installing.

To reassemble your device, follow the above steps in reverse order.

Take your e-waste to an [R2 or e-Stewards certified recycler](#).

Repair didn't go as planned? Check out our [Answers community](#) for troubleshooting help.