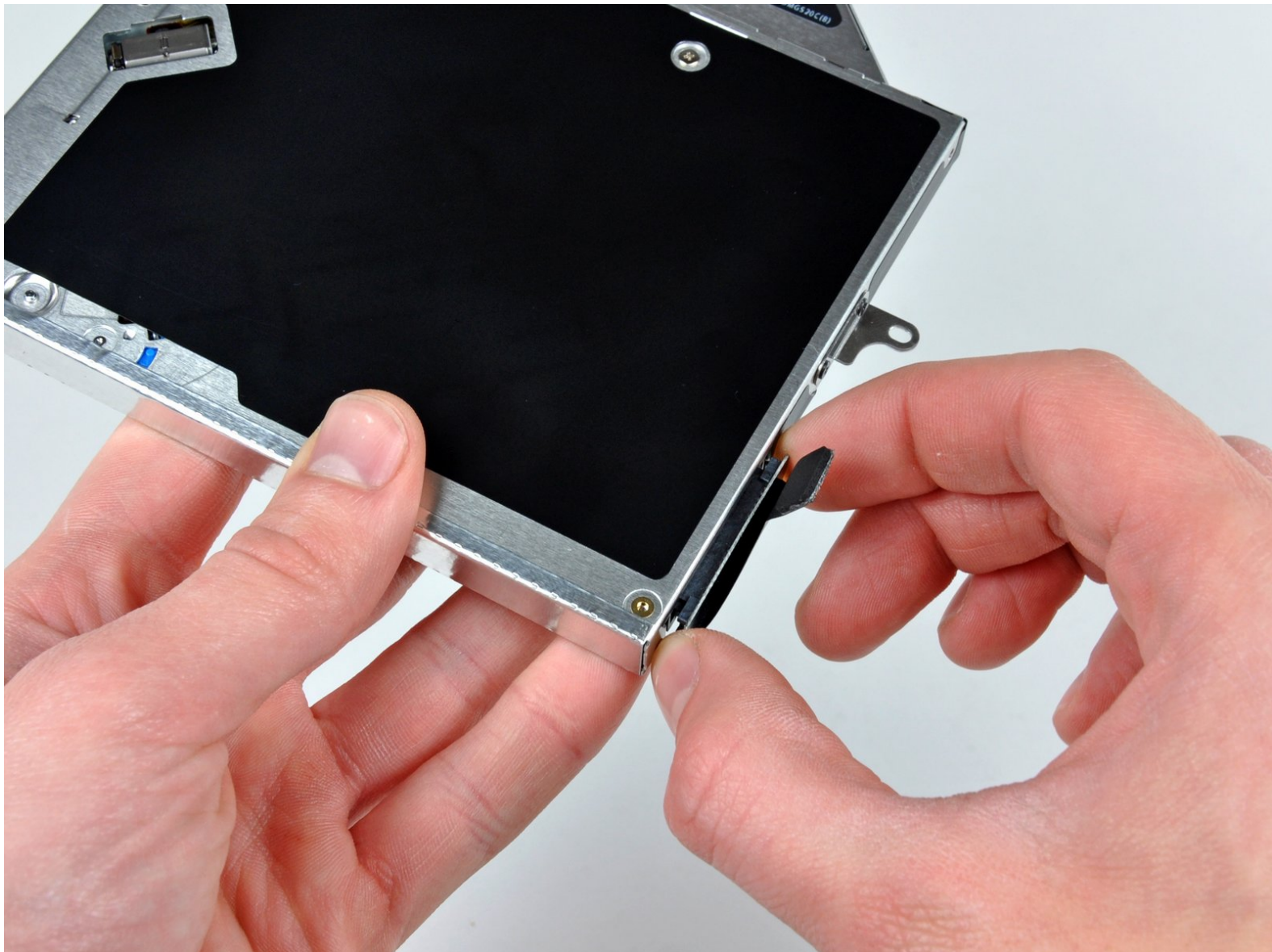




MacBook Unibody Model A1342 Optical Drive Replacement

This guide will show you how to replace the SuperDrive from your laptop (requires a SATA SuperDrive).

Written By: Walter Galan



INTRODUCTION

This guide will show you how to replace the SuperDrive from your laptop (requires a SATA SuperDrive).



TOOLS:

- [Phillips #00 Screwdriver](#) (1)
- [Spudger](#) (1)
- [T6 Torx Screwdriver](#) (1)
- [T8 Torx Screwdriver](#) (1)



PARTS:

- [MacBook Unibody \(Model No. A1342\) 8x SATA SuperDrive \(Used\)](#) (1)
- [MacBook Unibody \(Model No. A1342\) SATA SuperDrive Cable](#) (1)
- [Unibody Laptop Dual Drive](#) (1)

Step 1 — Lower Case



- Remove the eight 4 mm Phillips screws securing the lower case to the MacBook.

Step 2



⚠ The lower case is constructed of rubber-coated aluminum. Do not excessively bend the aluminum during removal, as any permanent deformation will cause tolerance issues after reassembly.

- Slightly lift the lower case near the vent opening.
- Continue running your fingers between the lower and upper cases until the upper case pops off its retaining clips.

i The location of these three clips is shown in the third picture.

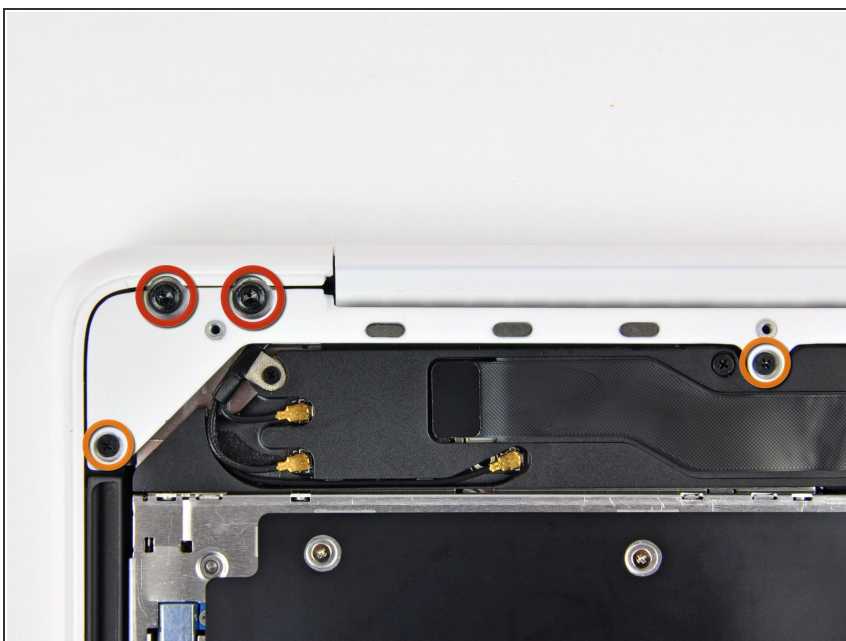
Step 3 — Battery



⚠ For precautionary purposes, we advise that you disconnect the battery connector from the logic board to avoid any electrical discharge. This step is **optional** and is not required.

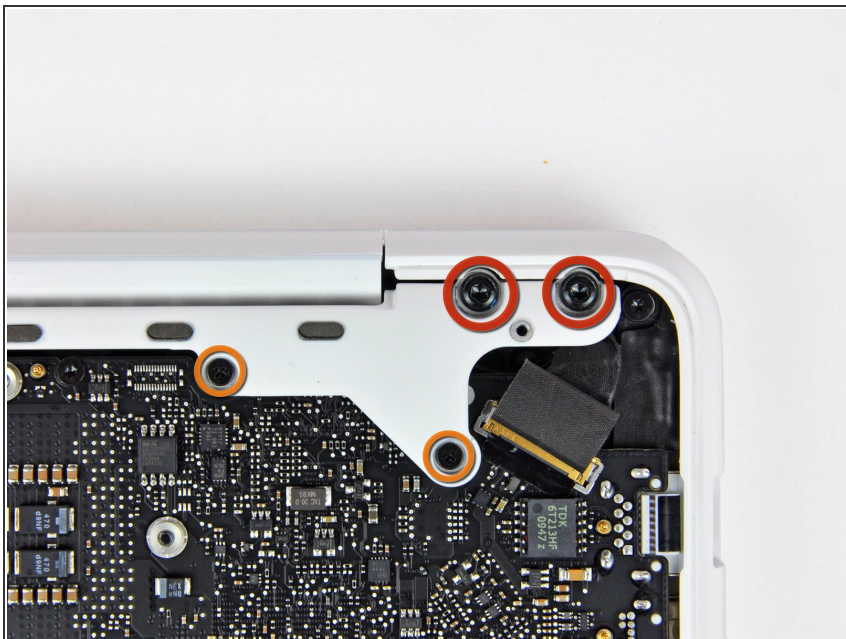
- Use the flat end of a spudger to lift the battery connector up out of its socket on the logic board.
- ℹ It may be easier to use your fingernails to lift up on both sides of the connector.

Step 4 — Rear Vent



- Remove the following screws from the optical drive side of the rear vent:
 - Two 10 mm T8 Torx
 - Two 5.2 mm Phillips

Step 5



- Remove the following screws from the port side of rear vent:
 - Two 10 mm T8 Torx
 - Two 5.2 mm Phillips

Step 6



- Carefully lift the rear vent out of the upper case.

Step 7 — Optical Drive



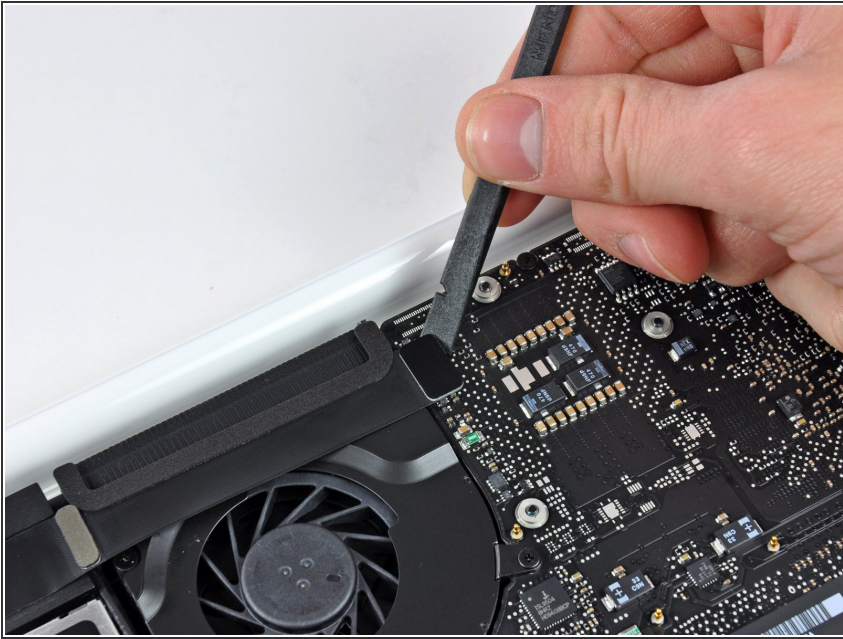
- Remove the single 12 mm Phillips screw securing the top of the rear speaker housing to the upper case.

Step 8



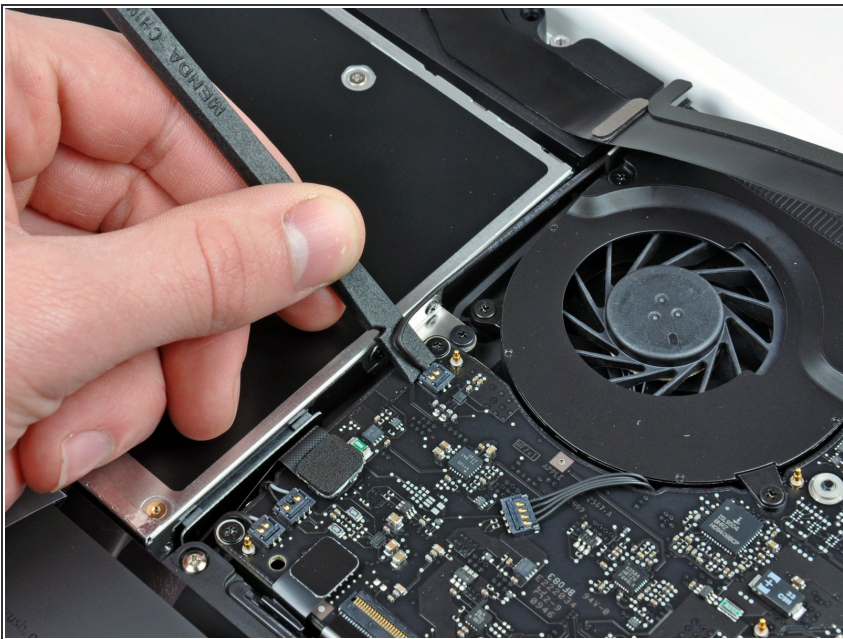
- Remove the single 2.2 mm Phillips screw inserted horizontally into the side of the optical drive.
- ⓘ This screw is located in a gap within the right speaker assembly, and is visible only from the hinge edge.

Step 9



- Use the flat end of a spudger to pry the AirPort/Bluetooth ribbon cable connector up off the logic board.

Step 10



- Use the flat end of a spudger to pry the rear speaker connector up off the logic board.
- ⓘ Pry up underneath the wires.
- ⚠ This connector is very delicate and easily broken.

Step 11



- Carefully rotate the rear speaker assembly (with AirPort/Antenna cables still attached) out of the lower case.

Step 12



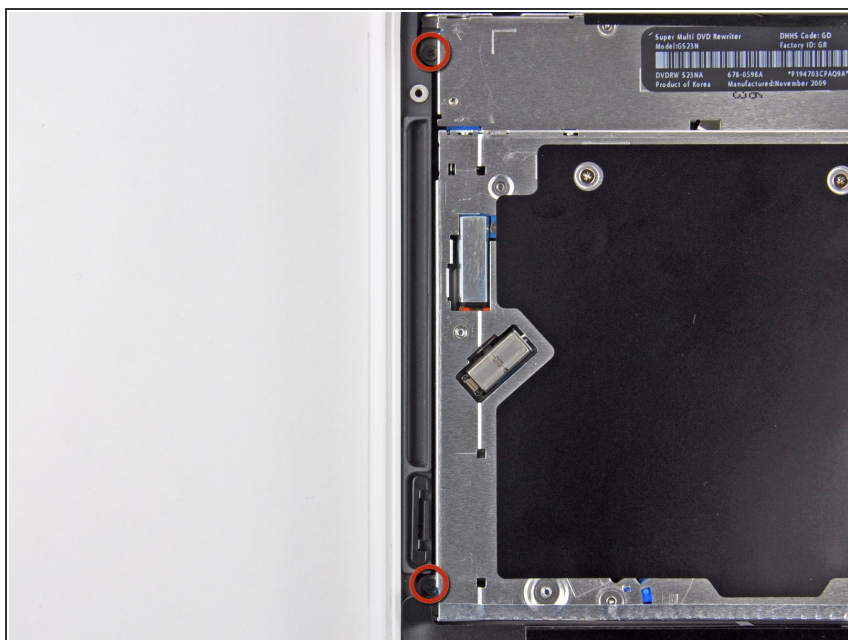
- Use the flat end of a spudger to pry the optical drive connector up off the logic board.

Step 13



- Remove the single 4.5 mm Phillips screw securing the optical drive bracket to the upper case near the fan.

Step 14



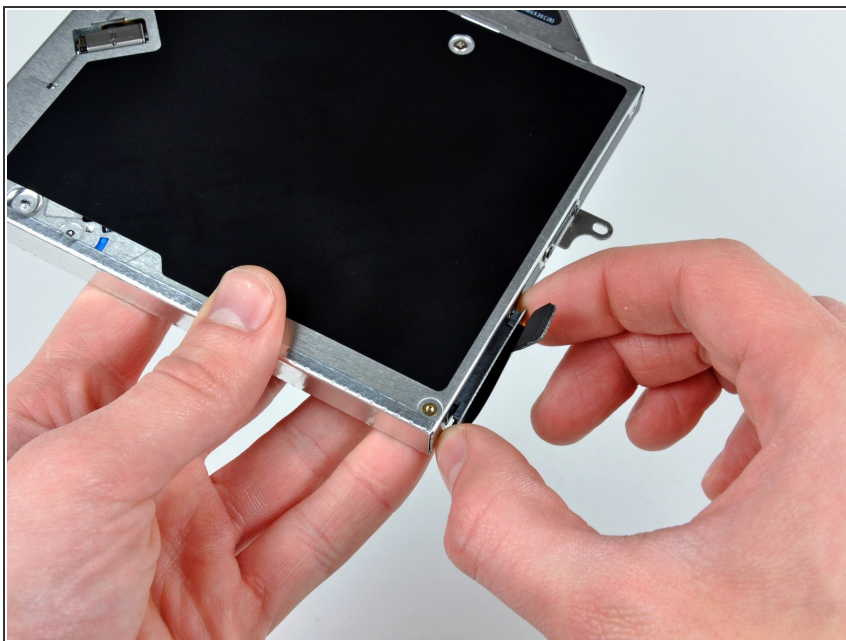
- Remove the two 2.5 mm Phillips screws securing the optical drive to the upper case near the optical drive opening.

Step 15



- Lift the optical drive near its connector and pull it away from the upper case to remove it from the computer.

Step 16 — Optical Drive



- Pull the optical drive cable connector away from the body of the optical drive.

Step 17



- Remove the two black Phillips #0 screws securing the small metal mounting bracket. Transfer this bracket to your new optical drive or [hard drive enclosure](#).

To reassemble your device, follow these instructions in reverse order.