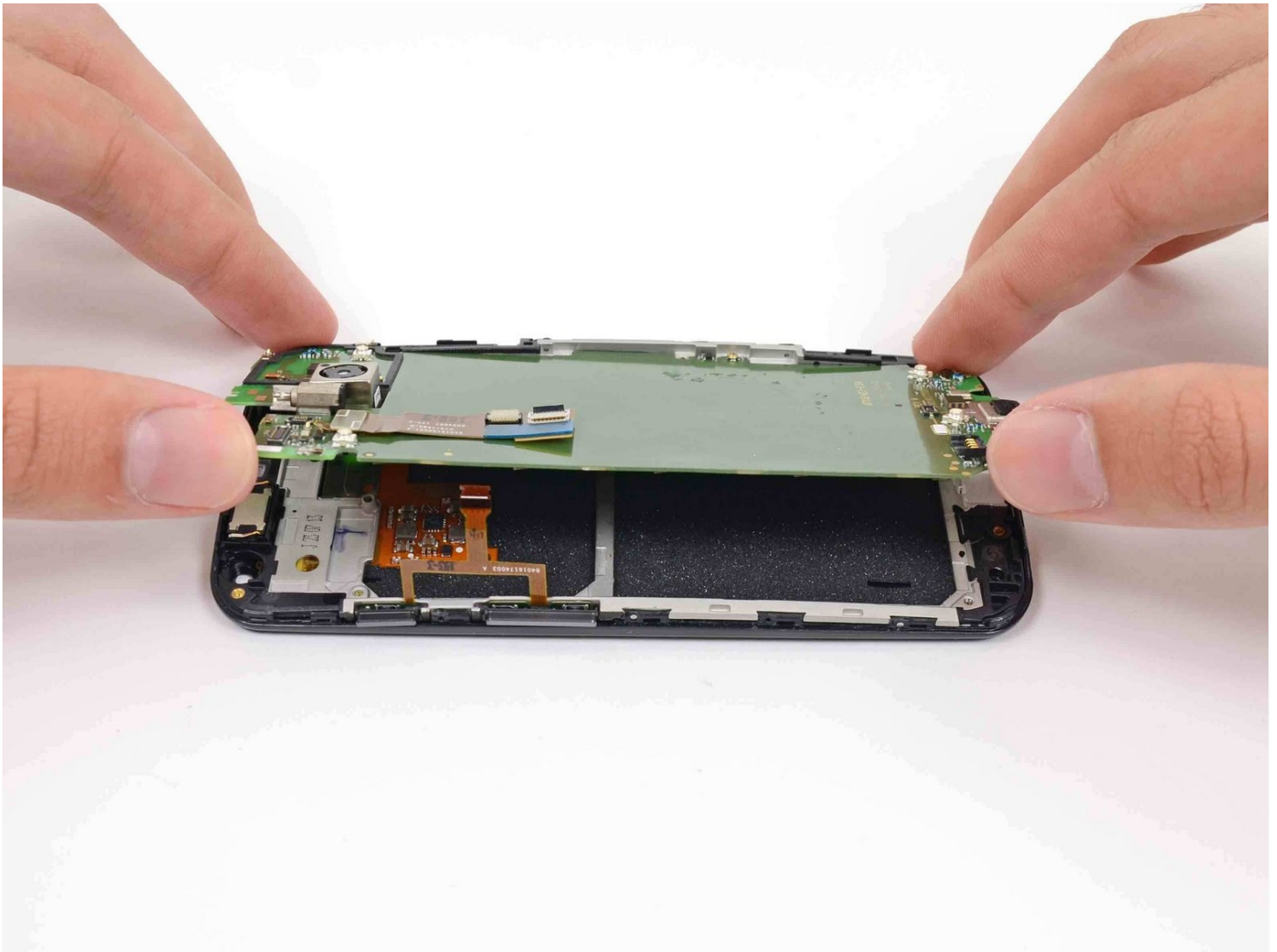




# Motorola Moto X Motherboard Assembly Replacement

Written By: Sam Goldheart



## TOOLS:

T3 Torx Screwdriver (1)

Spudger (1)

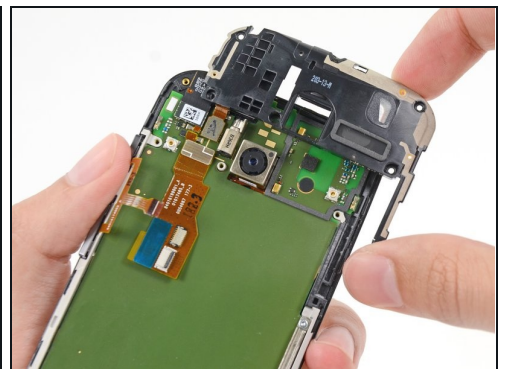
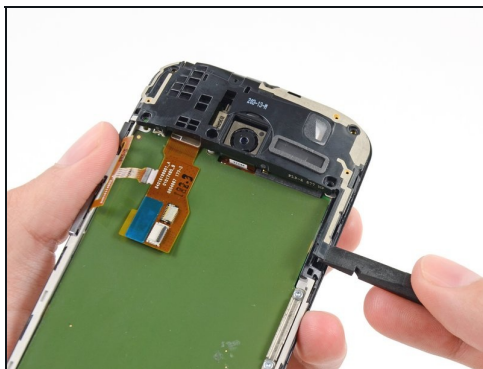
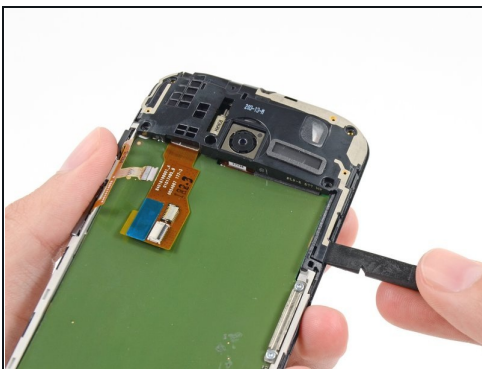
Tweezers (1)

### Step 1 — Motherboard Assembly



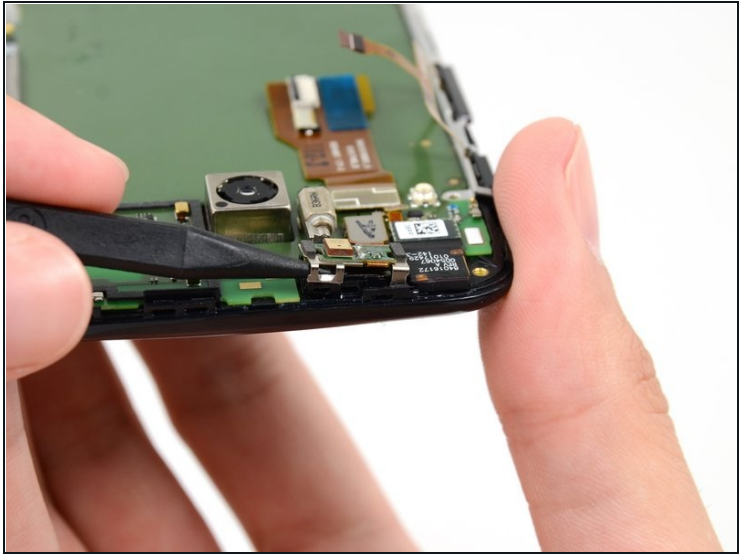
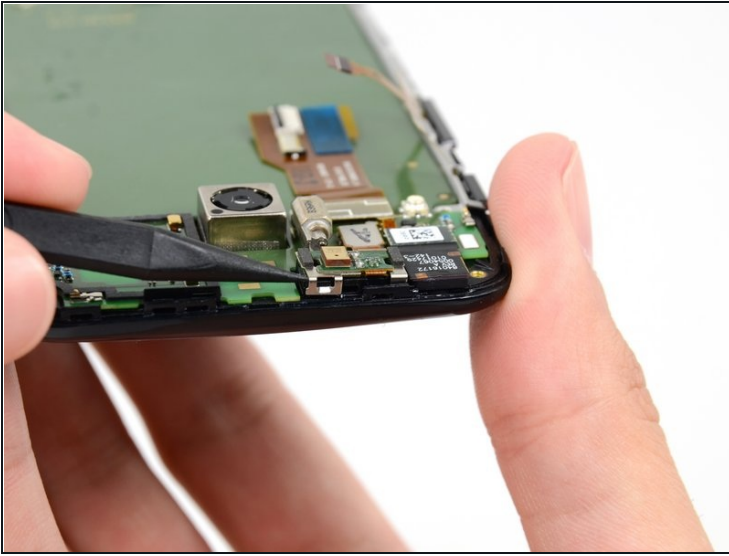
- Remove the five 3 mm T3 Torx screws from the headphone jack/speaker assembly.

### Step 2



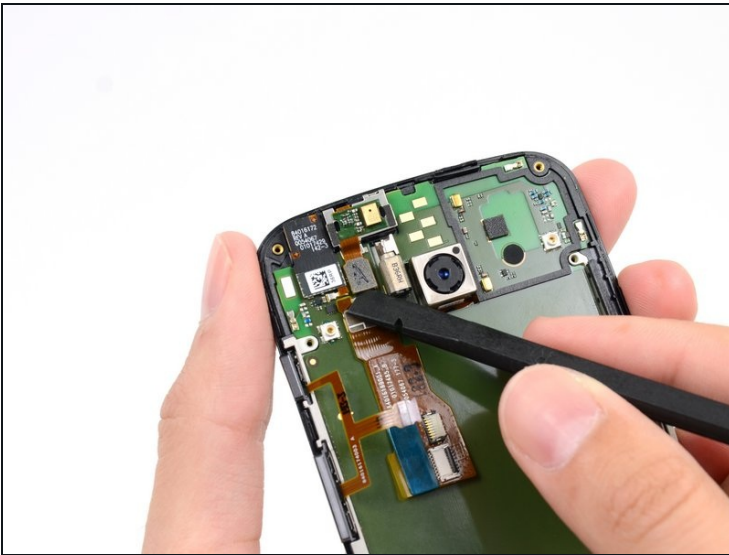
- Insert a spudger under the panhandle of the headphone jack/speaker assembly and pry it up from its recess.
- Remove the headphone jack/speaker assembly.

### Step 3



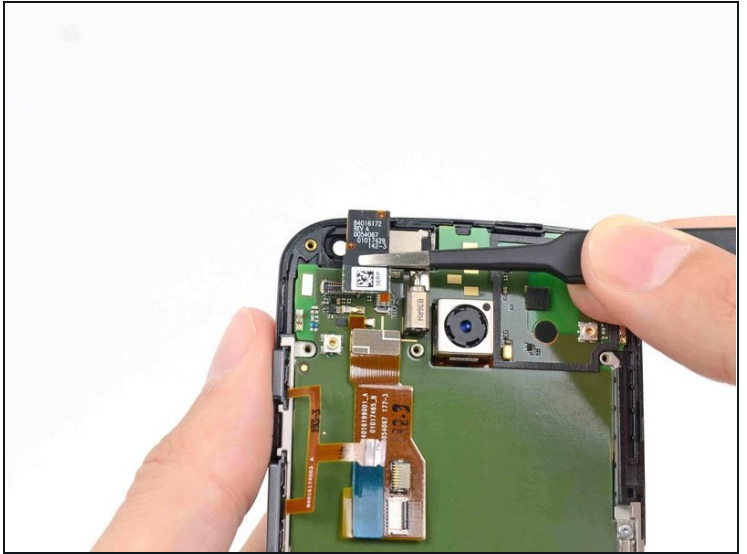
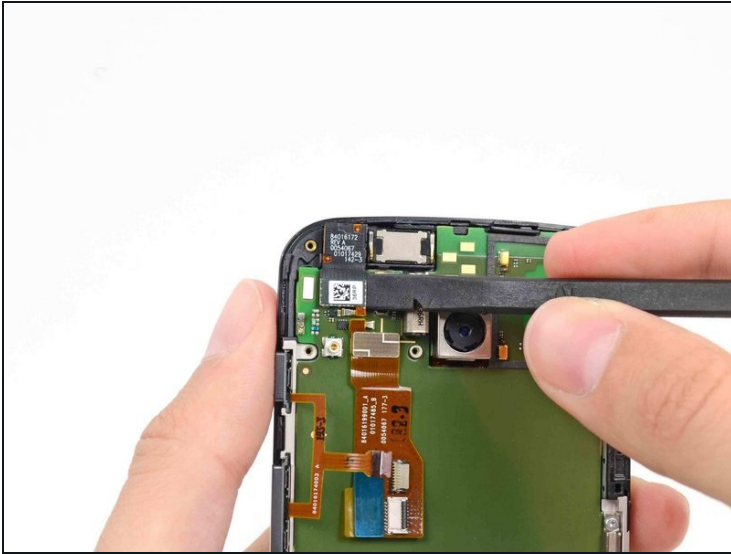
- Push the tip of a spudger under the microphone assembly clip to free it from the earpiece speaker.
- ⓘ If the assembly clip seems to be missing, check the speaker assembly that was removed from the previous step.

### Step 4



- Use the flat end of a spudger to free the microphone assembly cable connector.
- Use [tweezers](#) to remove the microphone assembly.

## Step 5



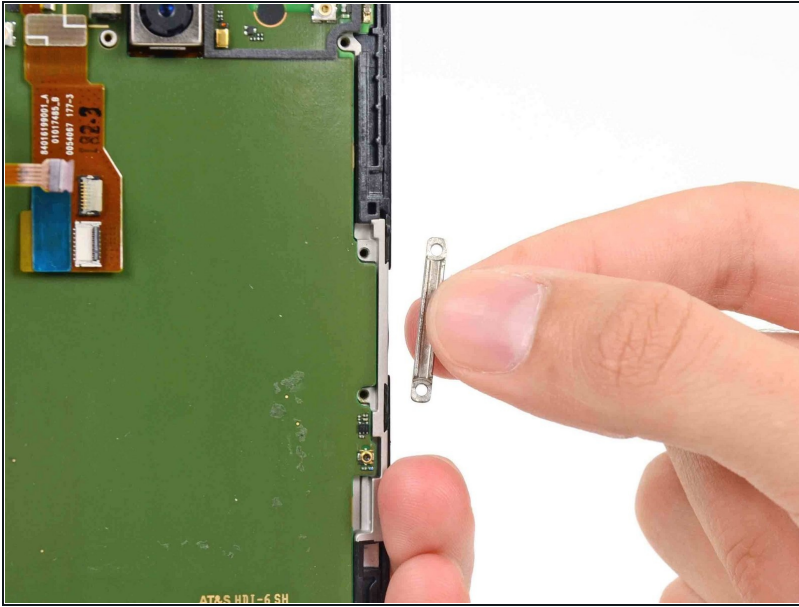
- Disconnect the front-facing camera cable connector.
- Remove the front-facing camera from its recess with a pair of tweezers.

## Step 6



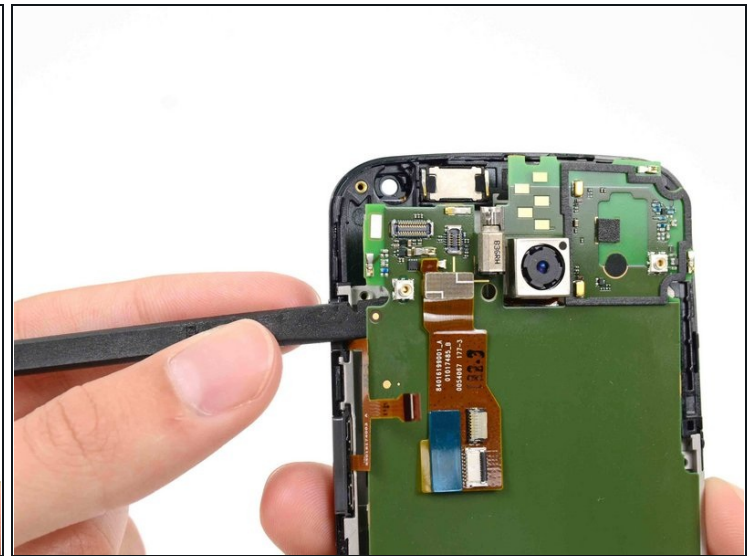
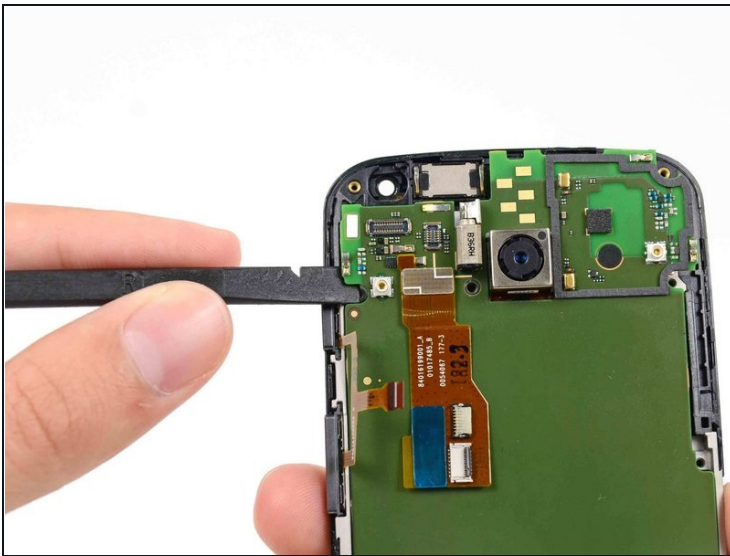
- Remove the final two 3 mm T3 Torx screws from the SIM slot bracket.

## Step 7



- Remove the SIM slot bracket from the motherboard.

## Step 8

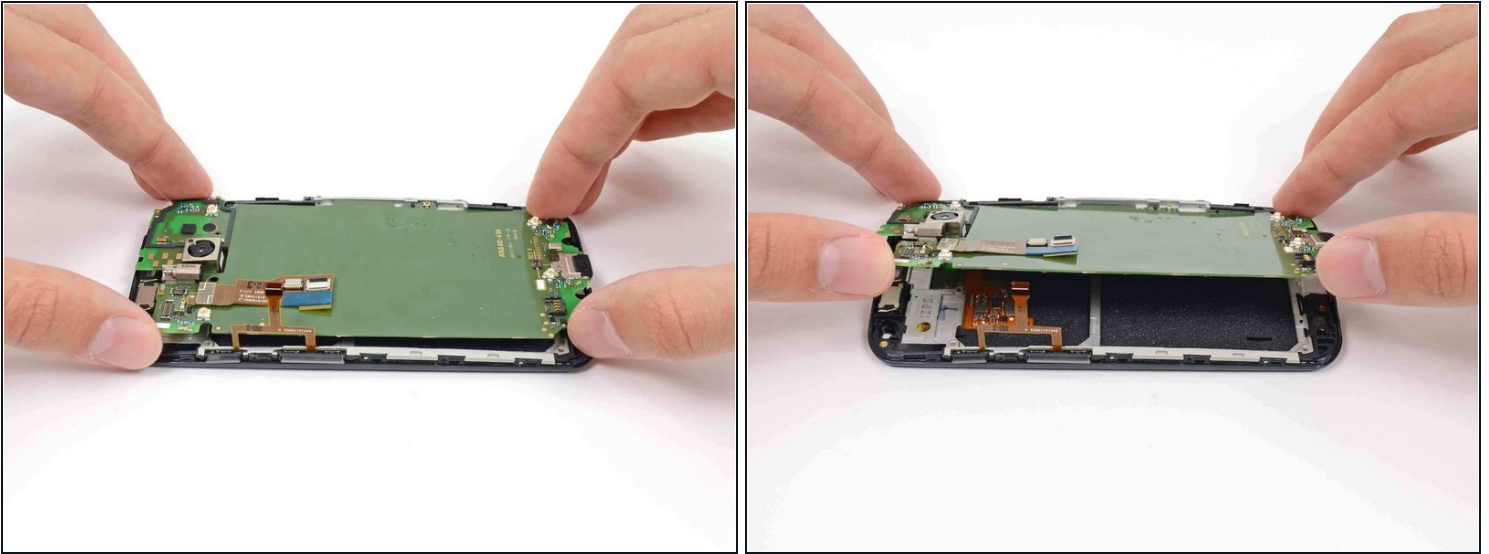


- Insert the flat end of a spudger under the motherboard above the button assembly cable, and pry it out of the phone.

⚠ Be careful not to snag any cables.

ⓘ The buttons may pop out of their recesses; take care not to lose them.

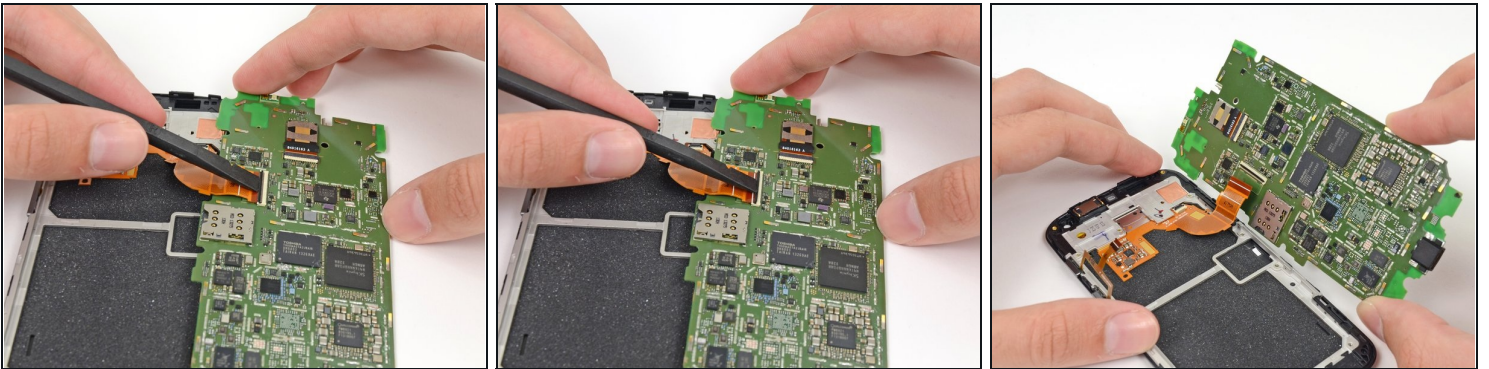
## Step 9



- Gently lift the motherboard out of the phone, rotating it from the SIM slot edge of the phone.

⚠ Do **not** attempt to separate the motherboard entirely; it is still connected to the display by the display cable.

## Step 10



- ① Lay the motherboard down to allow access to the display cable connector.
- Use the flat end of a spudger to flip the retaining tab on the display cable ZIF connector.
- Carefully pull the display cable out of its connector as you remove the motherboard from the display assembly.

---

To reassemble your device, follow these instructions in reverse order.