



Pantech Crux Teardown

This guide will show how to teardown a Pantech Crux.

Written By: Megan Voss





TOOLS:

- [64 Bit Driver Kit](#) (1)
- [0.8 SIM Eject Tool](#) (1)
- [Phillips #000 Screwdriver](#) (1)

Step 1 — Pantech Crux Teardown



- Let's see what's inside!
- Turn your Pantech Crux so that the back cover is facing upwards.
- Press the indented area at the top of the back cover with one thumb and slide down the cover with your other thumb.
- Remove back cover and set it to the side.

Step 2



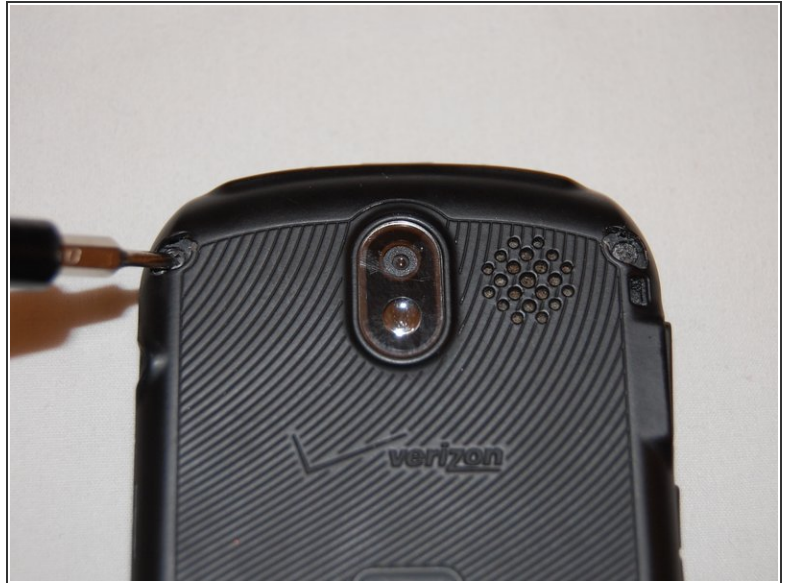
- Place your thumbnail in the groove at the bottom of the battery.
- Lift your thumbnail up to remove the battery from the battery casing.

Step 3



- Grab something with a Phillips #000 Screwdriver head.
- Locate the four screws on the corners of where the back cover was.
- Use the Phillips #000 Screwdriver to remove these screws.

Step 4



- Locate the two screw covers at the top of the phone.
- Grab a 0.8 SIM Eject bit.
- Use this bit to get underneath the cover and lift up.
- Remove both covers.
- Use the Phillips #000 Screwdriver to remove both screws.

Step 5



- Flip your Pantech Crux so the screen is facing upwards.
- Locate the sticker above your screen (it has a lock on it).
- Use the 0.8 SIM Eject bit to get underneath the sticker.
- Peel up the sticker.
- Use a Phillips #000 Screwdriver to remove the screw that was beneath the sticker.

Step 6



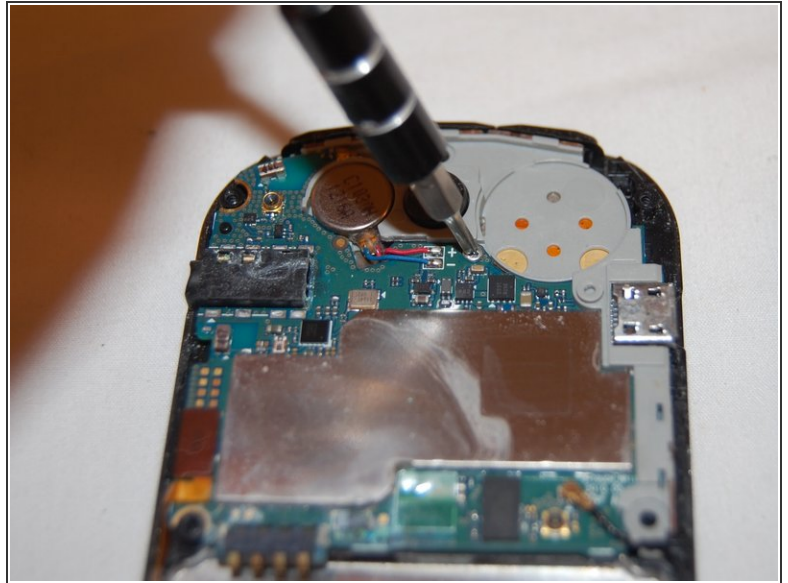
- Locate the area where the back case meets the silver outlining.
- Use your thumb or the 0.8 SIM Eject bit to lift the back case up.
- Slide either your thumb or the 0.8 SIM Eject bit between the back case and the silver outlining until the back case comes free.
- Lift and remove the back case from the phone.
- Place phone with the screen facing downwards.

Step 7



- Locate the buttons on the side of the phone that are now loose.
- Remove these buttons by pulling on them with your thumb and pointer finger.

Step 8



- Locate the screw that is in the middle of the motherboard.
- Use the Phillips #000 Screwdriver to remove this screw.

Step 9



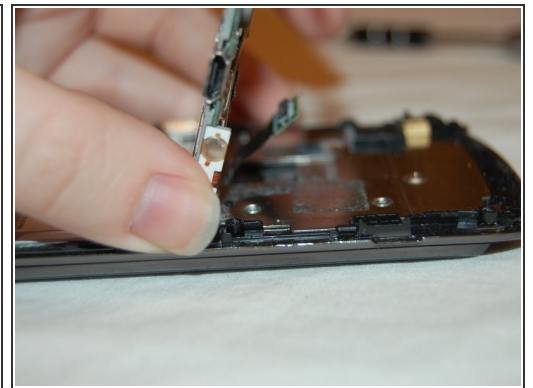
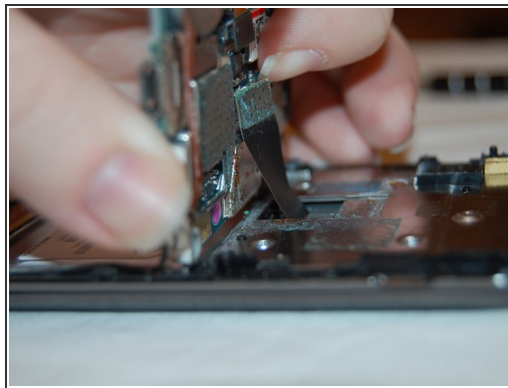
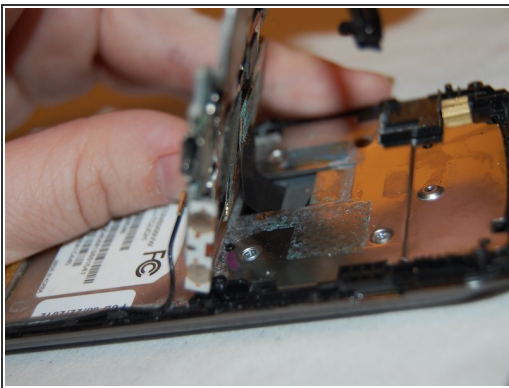
- Loosen the motherboard from the front case.

Step 10



- Locate the small wire in the bottom right corner of the motherboard.
- Release this wire by gently pulling up on it with your thumb and pointer finger.

Step 11



- Lift the motherboard.
- Locate the cable that attaches the motherboard to the front case.
- Use the 0.8 SIM Eject bit or your nail to lift up and pop off the piece that attaches the cable to the motherboard.

Step 12



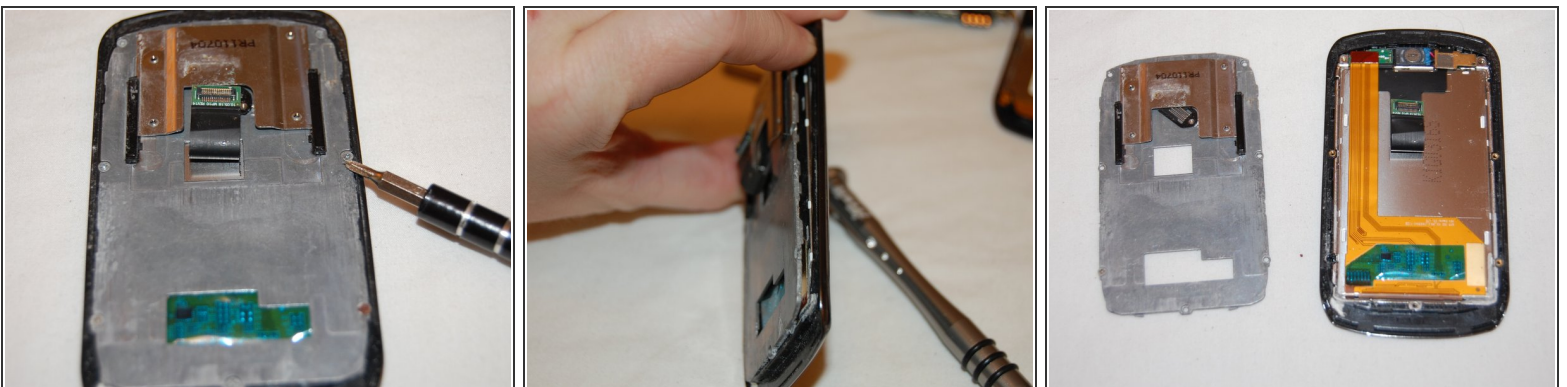
- Flip the motherboard to the left of the front case.
- Locate the four screws that were below the motherboard.
- Use the Phillips #000 Screwdriver to remove all four screws.

Step 13



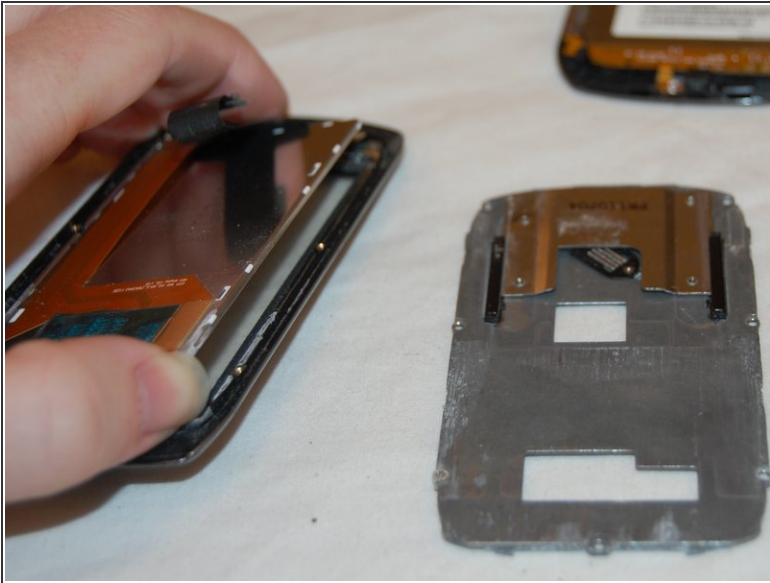
- Use your thumb or the 0.8 SIM Eject bit to lift up the layer containing the motherboard from the front of the phone.
- Run your thumb or the 0.8 SIM Eject bit along the edge of this layer to loosen it.
- Remove the layer when it becomes loose enough.

Step 14



- Underneath the layer you just removed is a piece of metal with seven screws on it.
- Use a Phillips #000 Screwdriver to remove all seven screws.
- Use your finger or the 0.8 SIM Eject bit to remove this metal piece from the front of the phone.

Step 15



- What you see is the back of the screen.
- To remove the screen lift it up from the side.

Step 16



- Congratulations! You have completed a teardown of the Pantech Crux.

To reassemble your device, follow these instructions in reverse order.