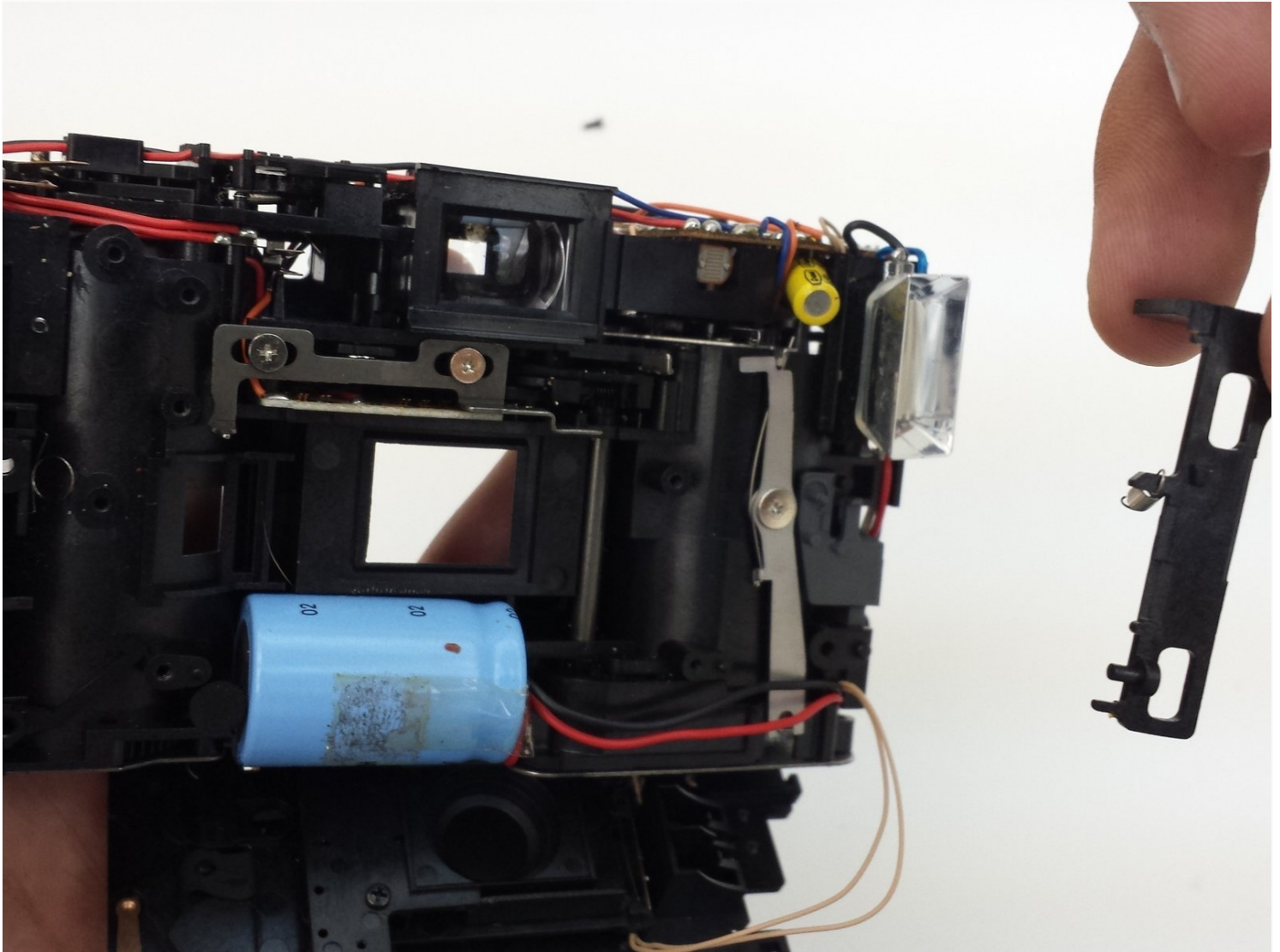




Ricoh YF-20 Super Button Mechanism Replacement

This process involves removing the back cover,...

Written By: Eric Dazet



INTRODUCTION

This process involves removing the back cover, front cover, and various other camera components. Once done, the button mechanism can be removed.

TOOLS:

Phillips #1 Screwdriver (1)

Step 1 — Front Cover



- Unscrew the seven indicated screws from the left, right, bottom, and back sides of the camera.

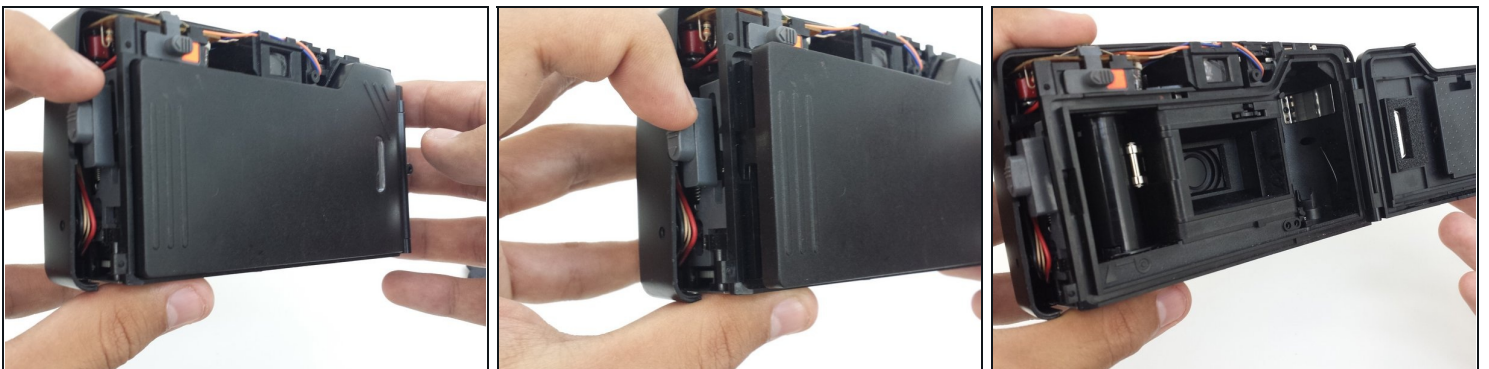
Step 2



- Loosen the back cover from both the left and the right sides of the camera.

⚠ Remove back cover. The lid of the battery compartment may fall off because it is not attached to anything.

Step 3



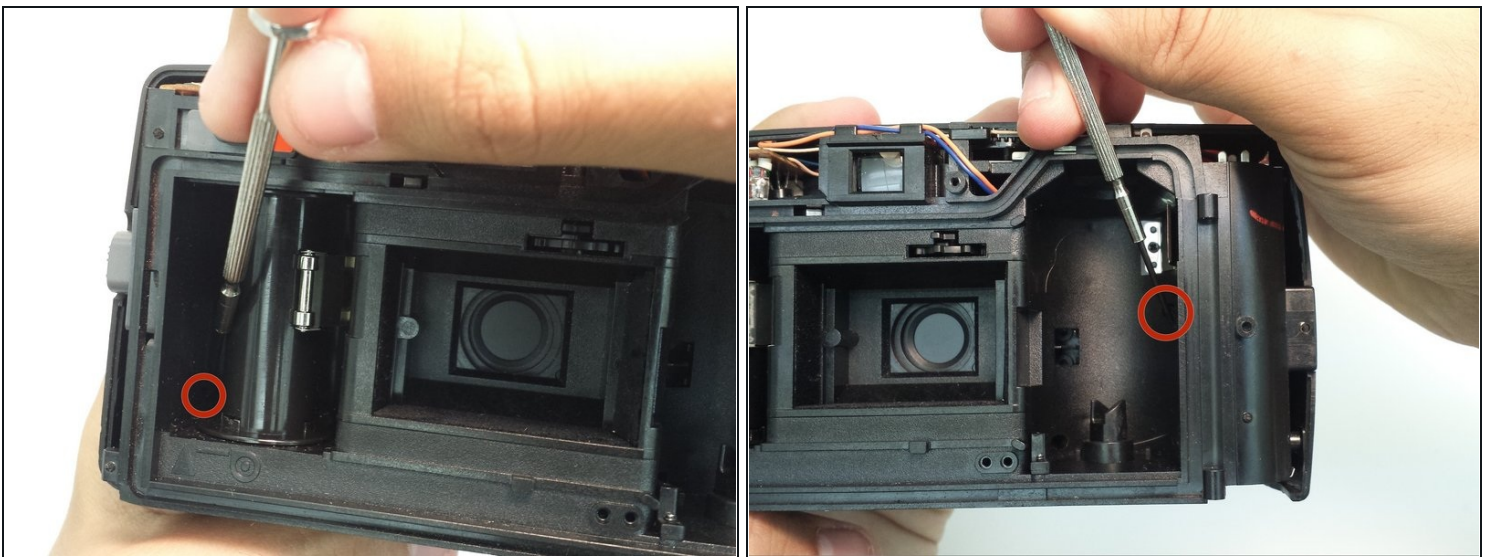
- Open the film compartment.
 - Press your finger on top of the grey latch on the left side of the camera.

Step 4



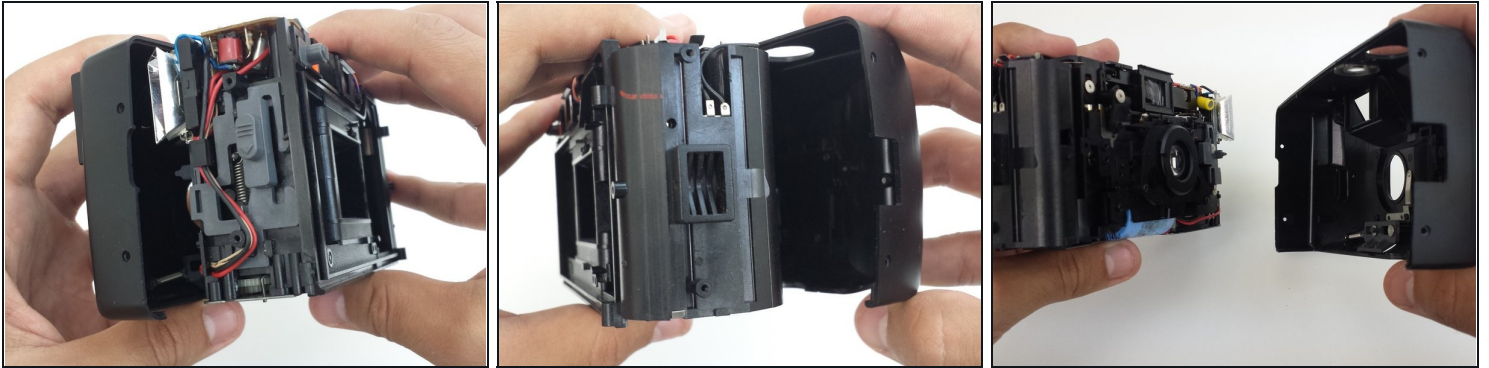
- ① Removing the film compartment door is optional. However, it may aid maneuverability in future steps.
- Use a thin object like a toothpick or a small screwdriver to push down on the metal pin holding the film compartment door in place.
 - Use your fingers to completely remove the metal pin.
 - Remove the film compartment door.

Step 5



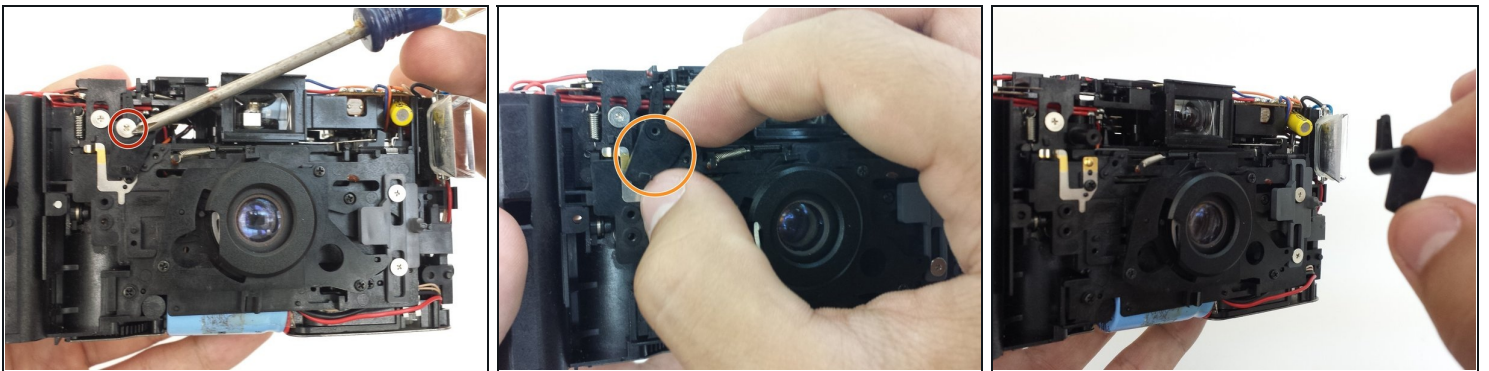
- Using a thin shaft screwdriver, unscrew the two indicated screws within the film compartment.

Step 6



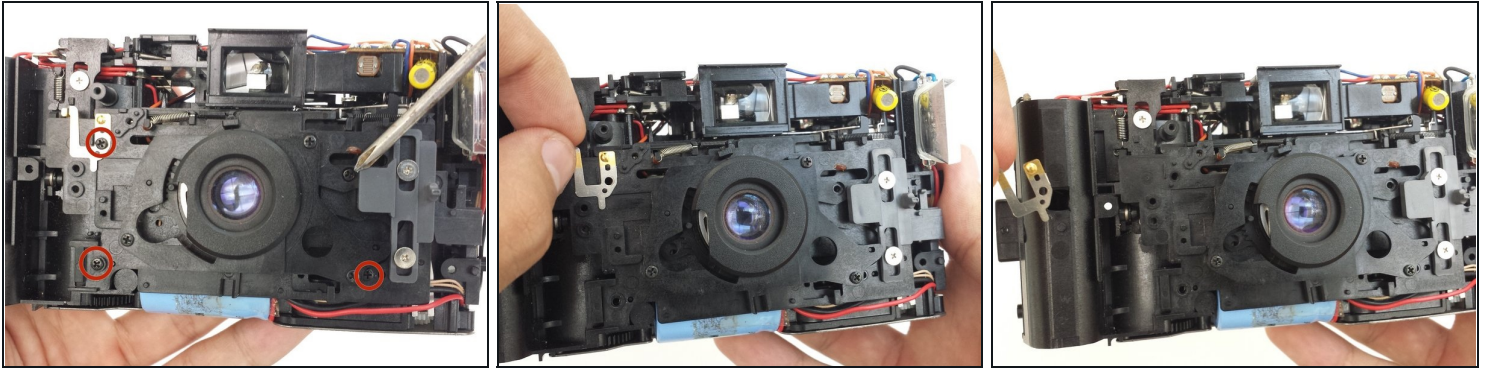
- Loosen the front cover from the left and right sides of the camera.
- Remove the front cover.

Step 7 — Ricoh YF-20 Super Button Mechanism Replacement



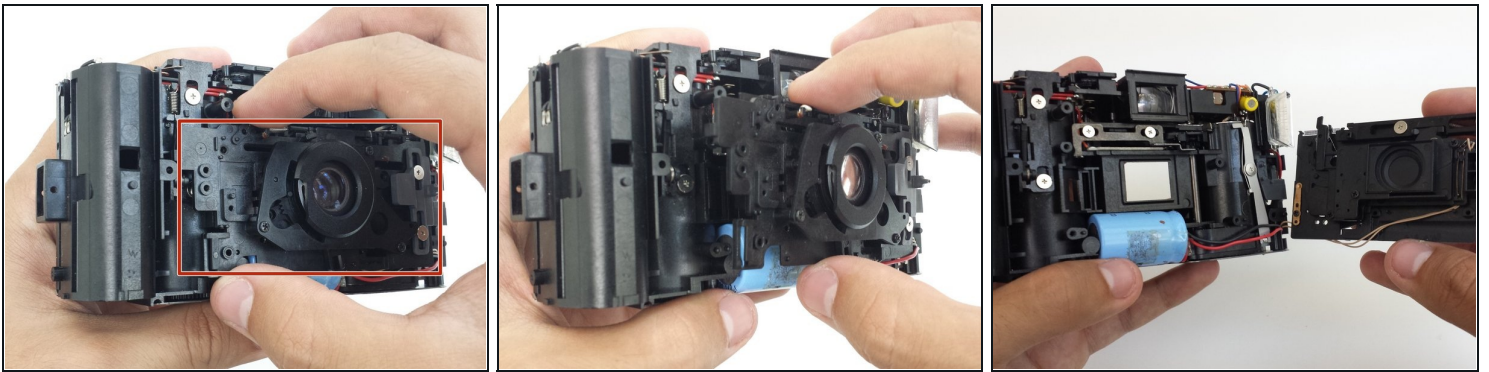
- Remove and set the front and back covers aside
- Remove the screw that holds the front plate brace in place.
- Remove brace.

Step 8



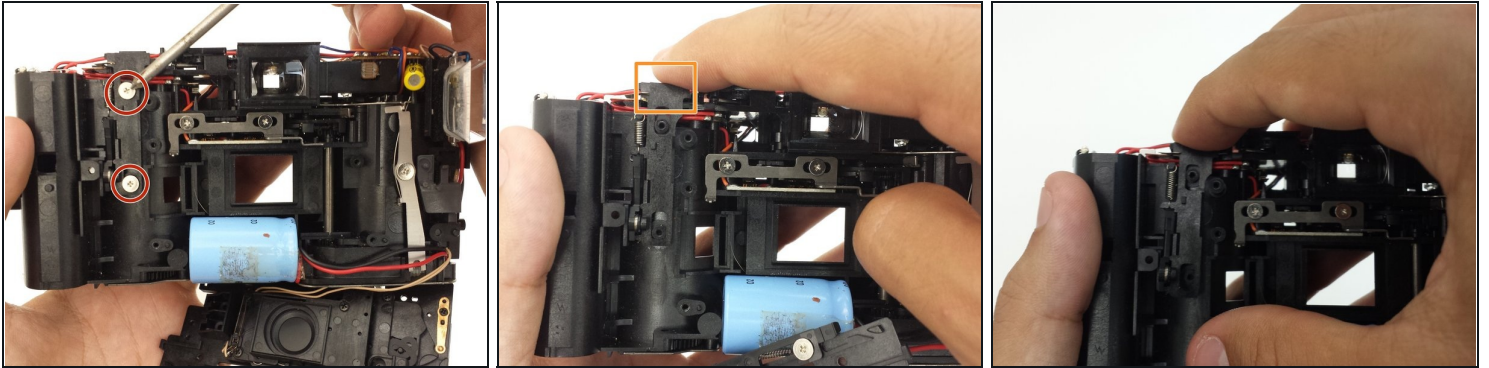
- Unscrew the four screws keeping the front face plate in place.
- ① The top left screw also holds a metal clip in place.
- Remove metal clip.

Step 9



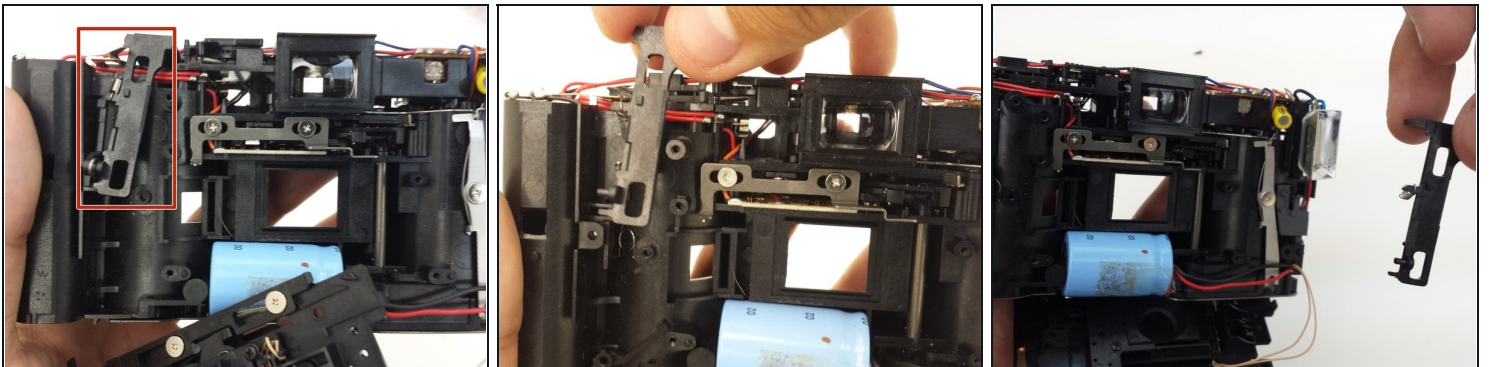
- After removing the metal clip in the previous step, the front face plate can be removed.
- ⚠ The front face plate is attached to the camera body by two small wires. Carefully remove the plate and completely separate it from the camera body.

Step 10



- Unscrew the two screws that hold the button mechanism in place.
- Press down on button mechanism to unlatch it from the camera body. When pressed down, the bottom of the mechanism should push outward.

Step 11



- Lift the button mechanism up carefully, removing the spring at the top of the mechanism from where it is attached to the camera body.
- Remove the button mechanism.

To reassemble your device, follow these instructions in reverse order.