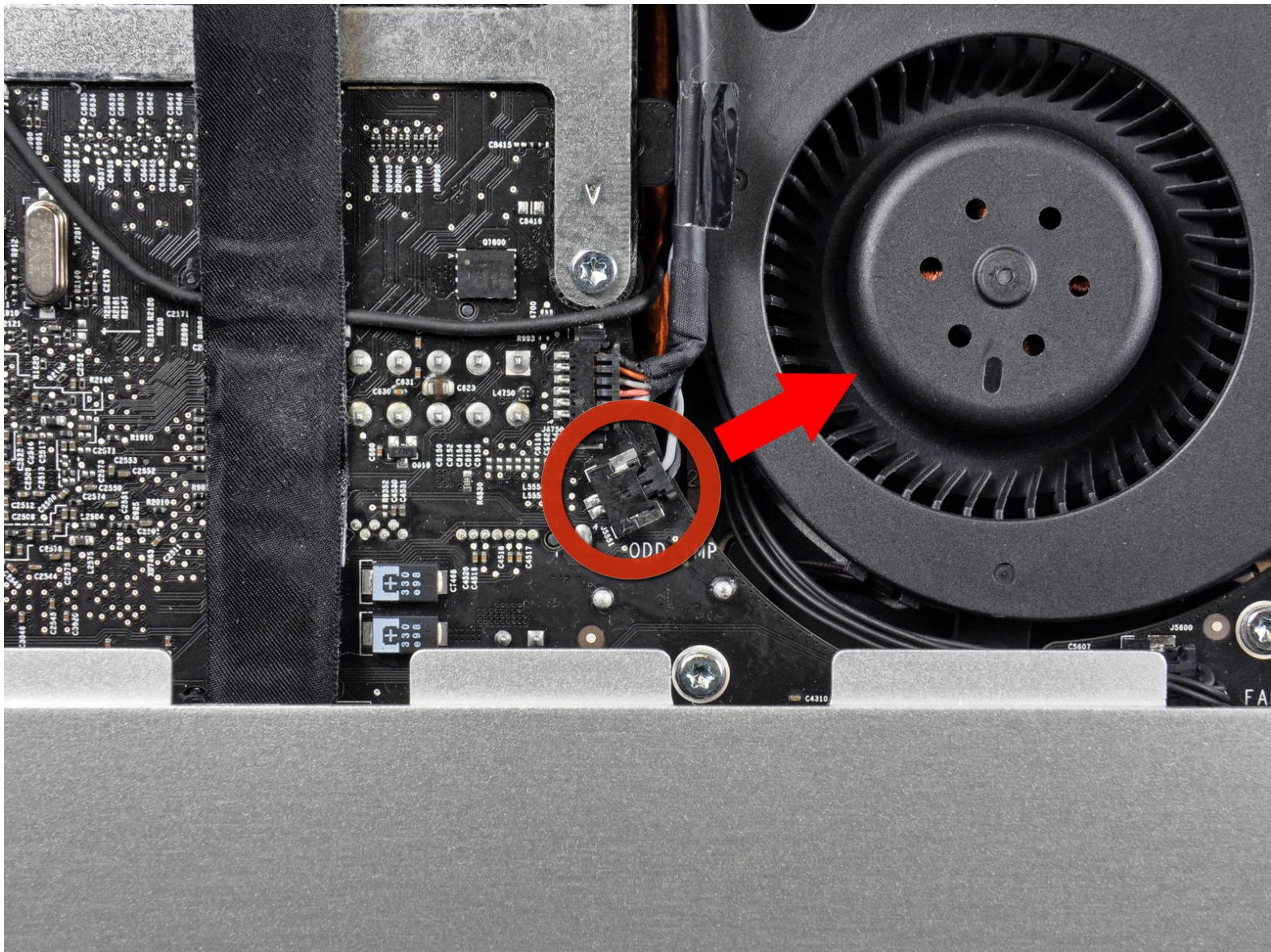




# iMac Intel 21.5" EMC 2308 Optical Drive Replacement

Written By: Andrew Bookholt



---

# INTRODUCTION

This guide is an internal prerequisite and should remain unpublished.

---

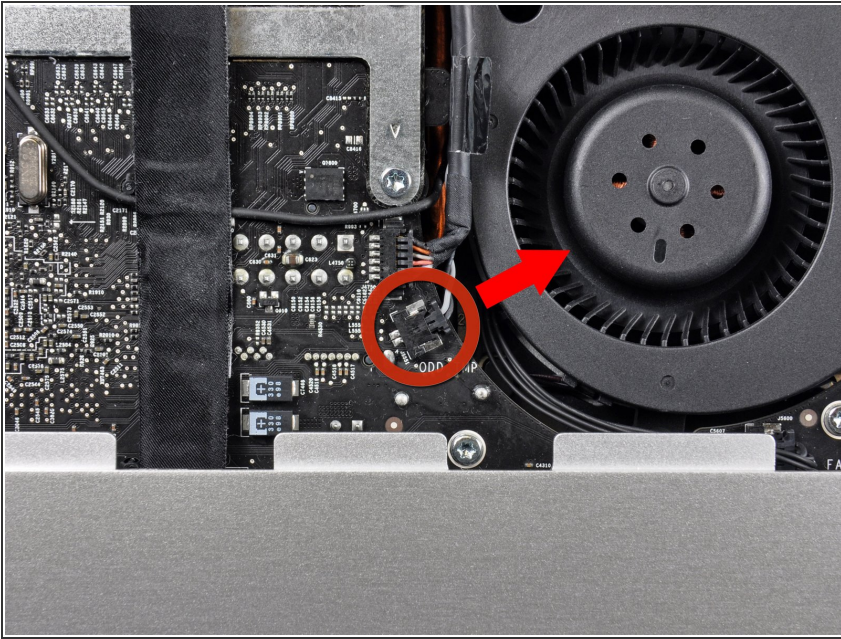


## TOOLS:

- [T10 Torx Screwdriver](#) (1)
  - [Spudger](#) (1)
-



## Step 1 — Optical Drive



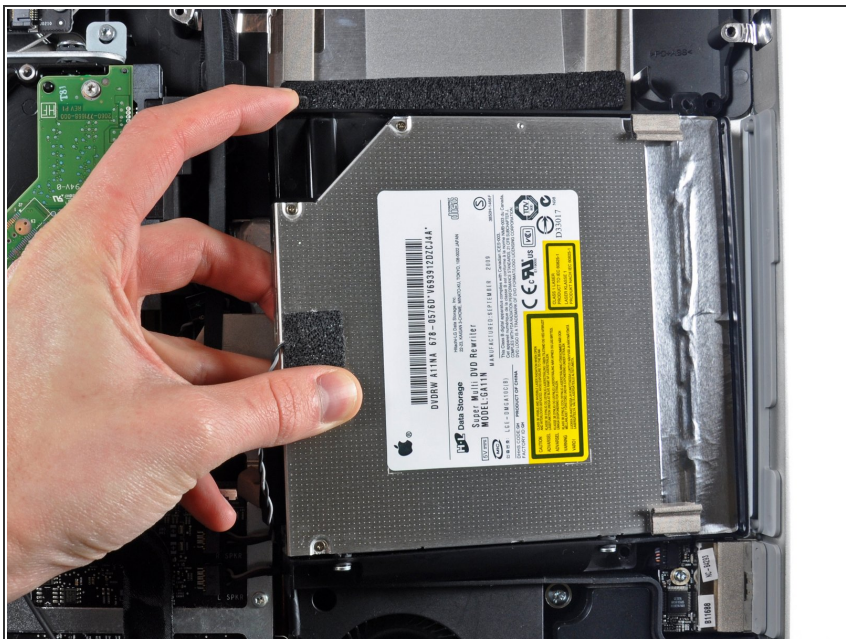
- Pull the optical drive thermal sensor connector straight away from its socket on the logic board.

## Step 2



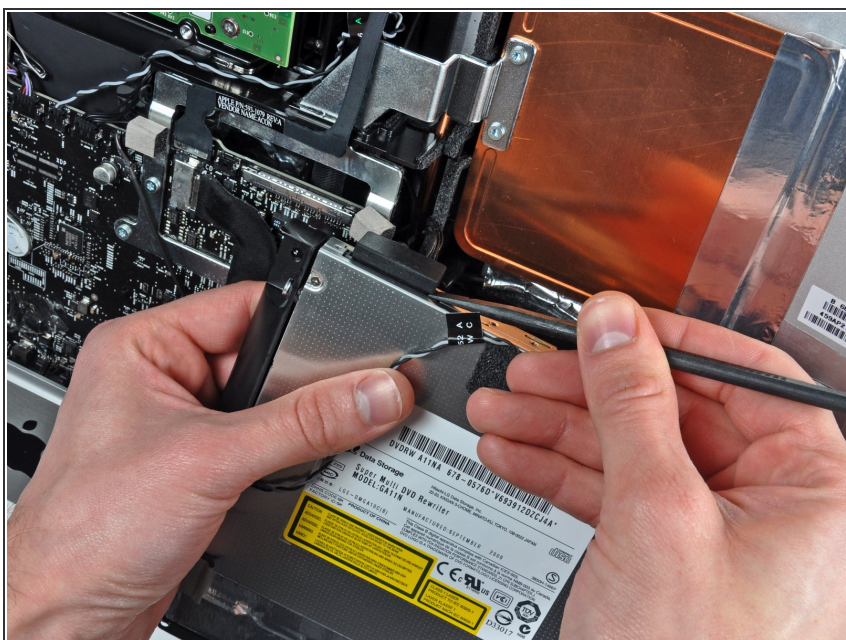
- Remove the four 9 mm T10 Torx screws securing the optical drive to the outer case.

## Step 3



- Lift the inner edge of the optical drive and maneuver its connector past the frame attached to the logic board.
- Carefully pull the optical drive off its mounting pins on the edge of the outer case to gain clearance for disconnecting the optical drive cable.

## Step 4



- Use the flat end of a spudger to help disconnect the optical drive cable.

To reassemble your device, follow these instructions in reverse order.