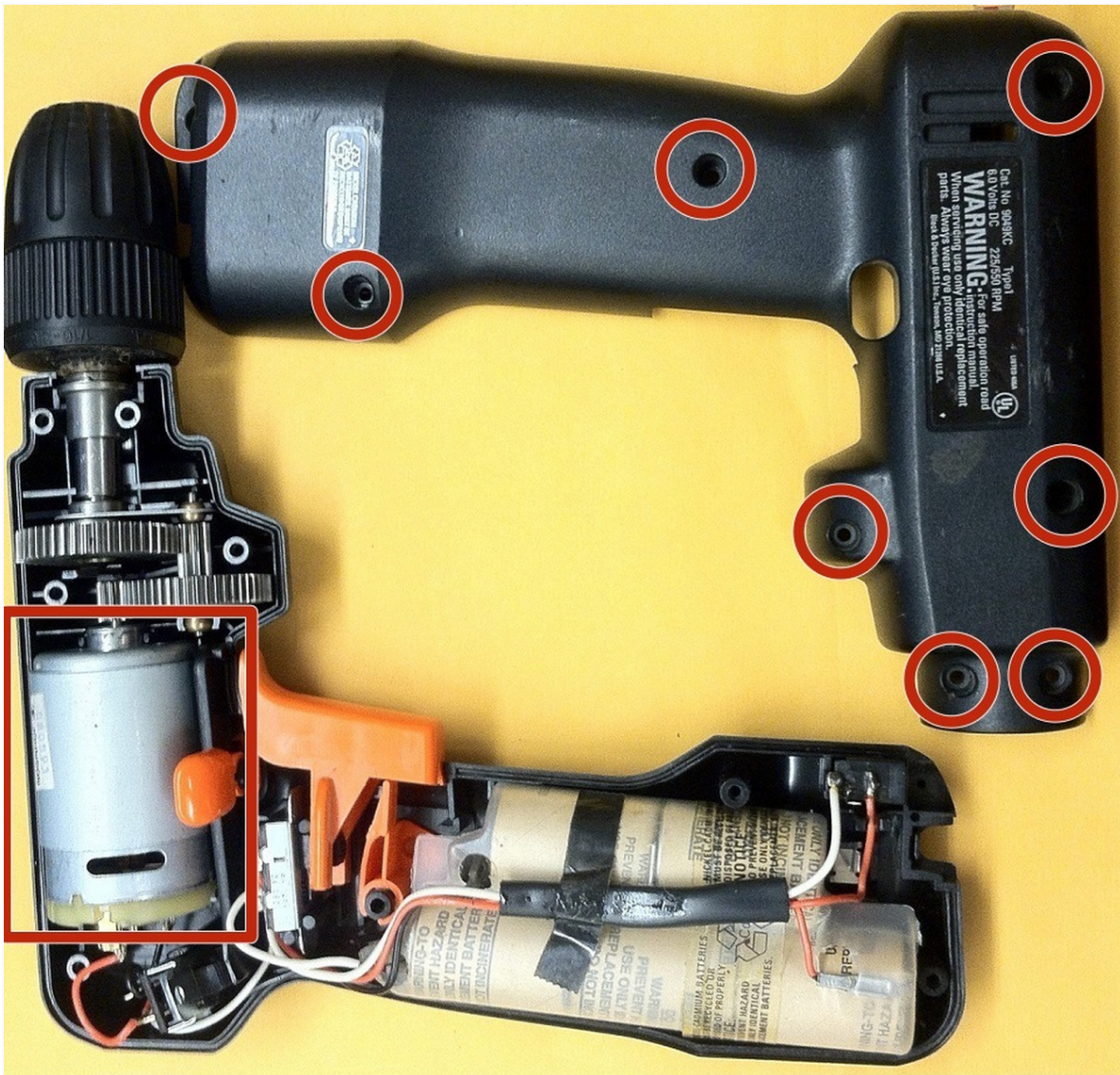




# Black and Decker CD2500 Motor Replacement

Make sure you have a clear work space and...

Written By: Ashley



# INTRODUCTION

Make sure you have a clear work space and containers to organize parts as you disassemble and reassemble the drill.

## TOOLS:

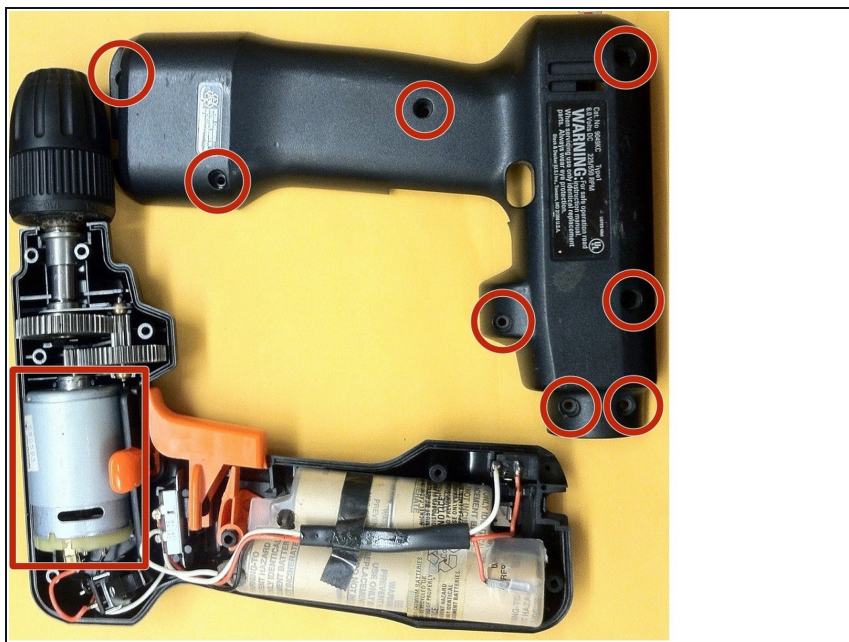
Large Needle Nose Pliers (1)

Mako Driver Kit - 64 Precision Bits (1)

## PARTS:

Black and Decker 9049KC Type 1 CD2500 Motor (1)

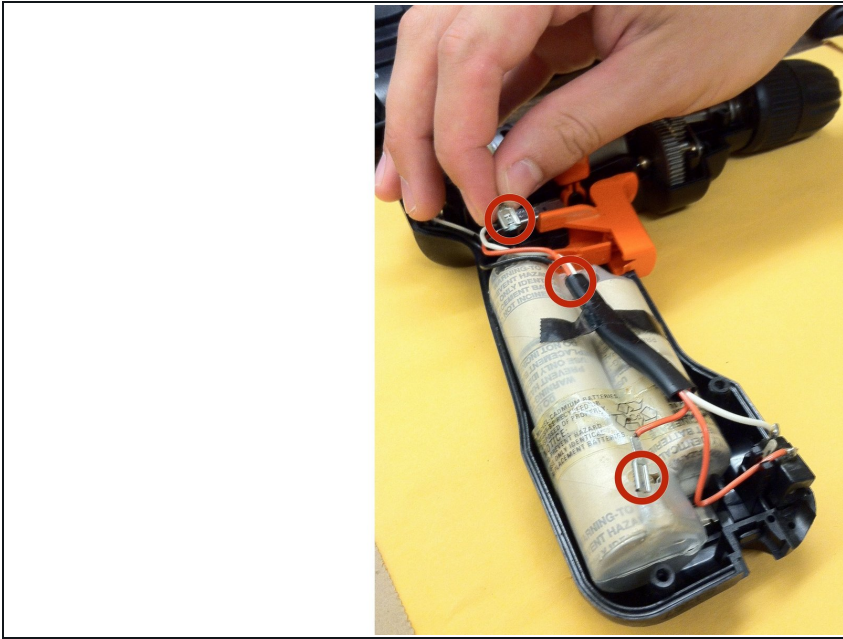
### Step 1 — Motor (148331-03)



- Use a Phillips head screwdriver to unscrew 8 (3/4 in) Phillips screws from the housing set. Keep the screws all together.
- Carefully remove the top housing



## Step 2



**⚠ SHOCK WARNING:** Ensure wire ends do NOT touch each other! Disconnect the battery from the drill by pulling out the 3 terminals.

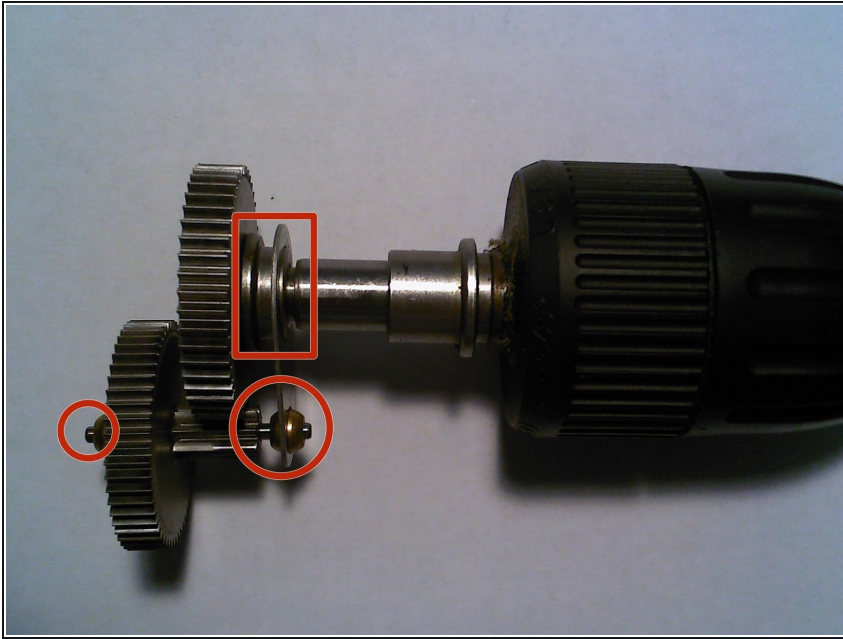
- Make sure the wires previously connected to the battery are moved away from the battery terminals.
- Make sure the drill trigger assembly stays in place or a new guide will be necessary.

## Step 3



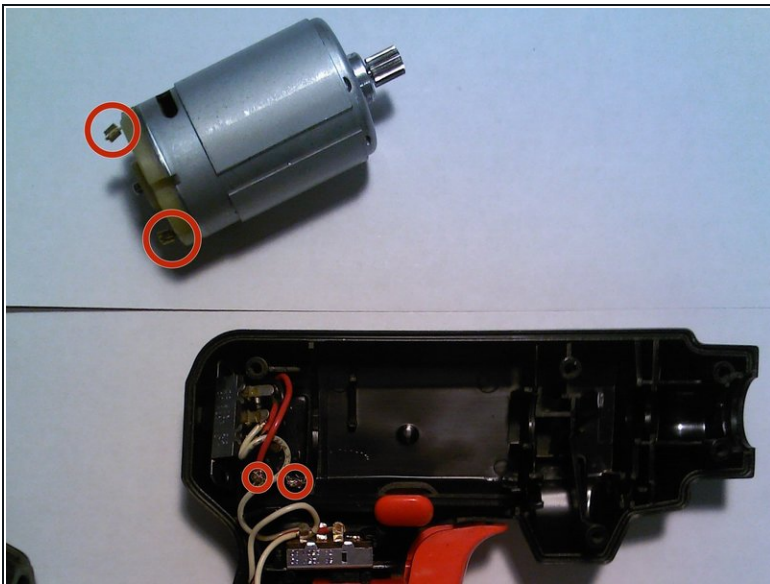
- Grab the drill head with one hand and the gear with the other.
- Pull away the second large gear from the motor gear and lift the drill head and gear up and out of the housing set.

## Step 4



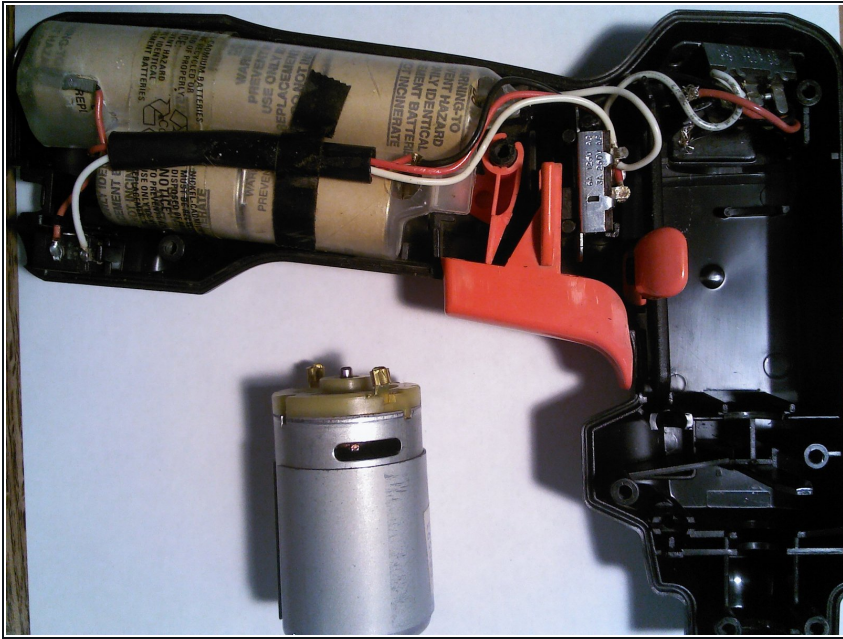
- Keep the drill head and gear assembly as one unit.
- Make sure the gear assembly stays as one piece and the gold bearings do not fall off.

## Step 5



- Pull out the motor and lay it next to the drill; keep in mind that the white and red wires will still be attached to the motor.

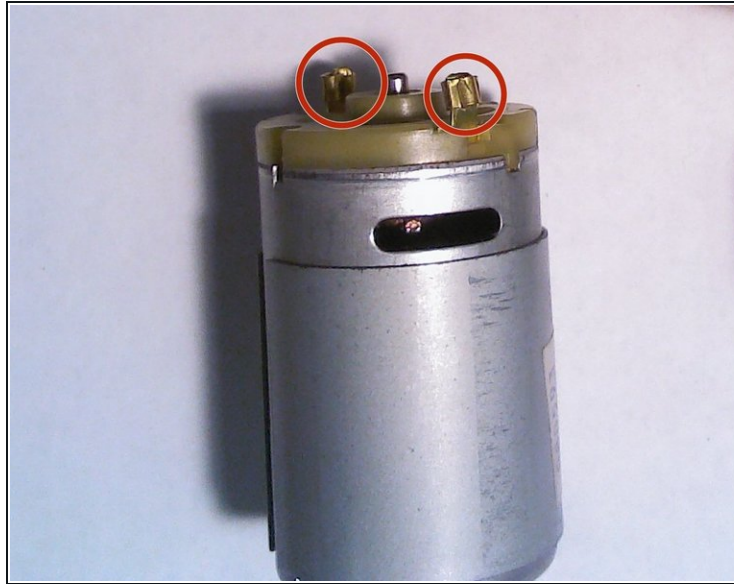
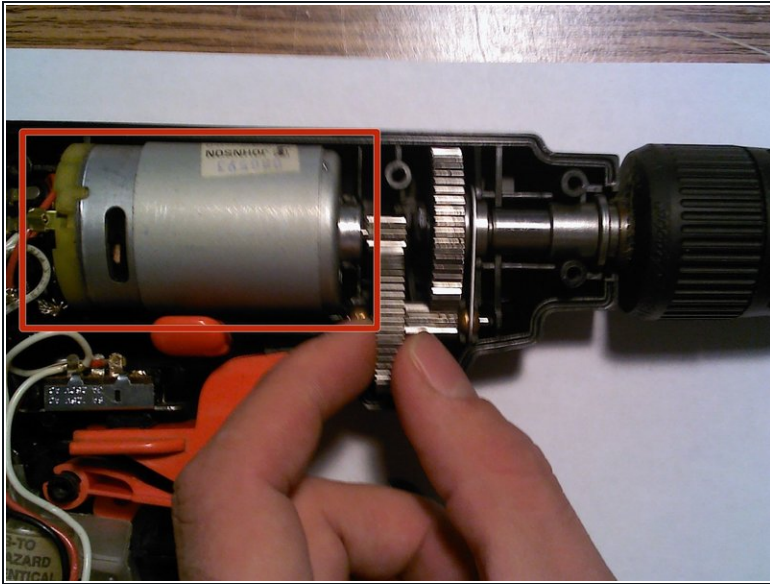
## Step 6



- The needle nose pliers will be used to detach the wires.
- **WARNING:** Take extra care when using the pliers to detach the wires as both wires and motor terminals are delicate.
- Use the pliers to “slide” the narrow sides of the motor terminals where the wires are attached. Pinching terminals will make it difficult to remove the wire from the terminal.

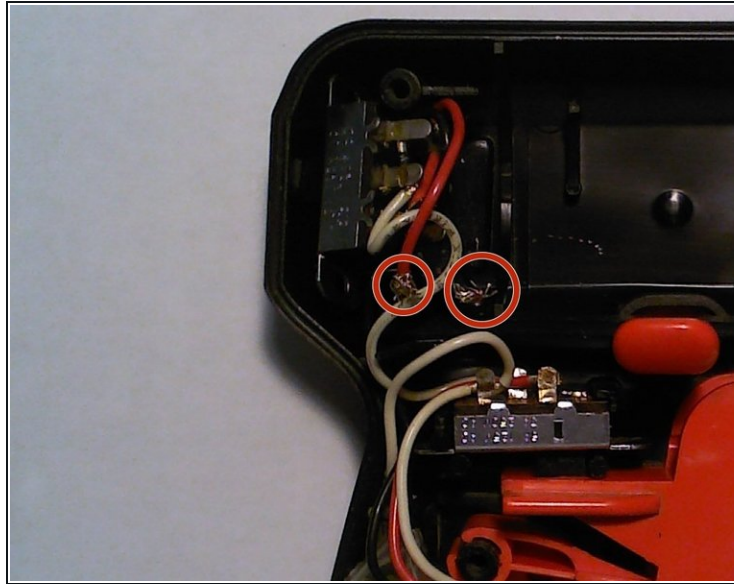
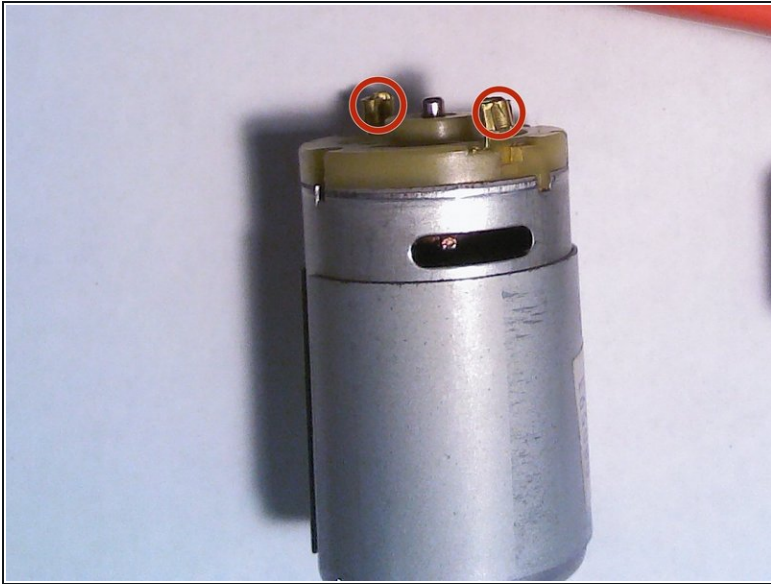


## Step 7



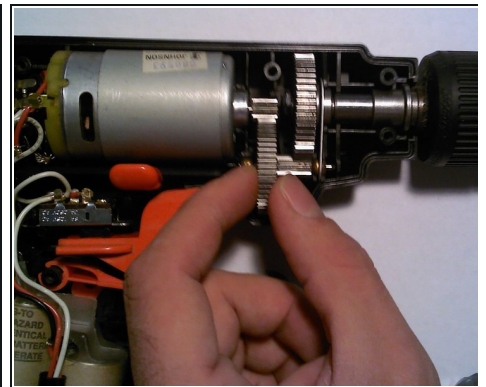
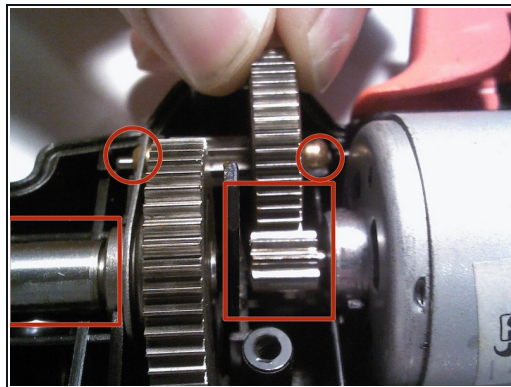
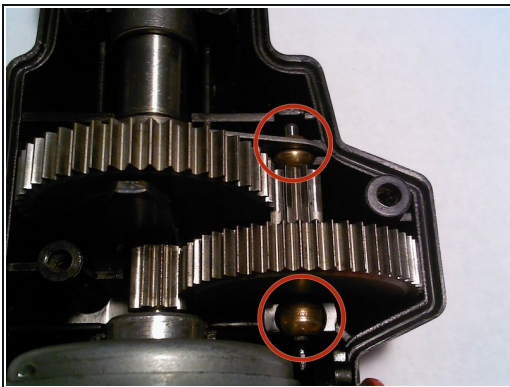
- Install new motor.
- Attach wires to the new motor; make sure that the red wire is inserted back into the positive terminal on the new motor. The positive terminal is denoted by a (+) symbol.
- The white wire will be inserted back into the negative terminal on the new motor. The negative terminal is denoted by the (-) symbol.
- Make sure that the motor sits in the lower housing with the two terminals vertically in line, with the positive/red terminal on top.
- The motor should fit snugly in the lower housing.

## Step 8



- Use the pliers to "slide" the wide sides of the motor terminals to firmly secure the wires back to the terminals.

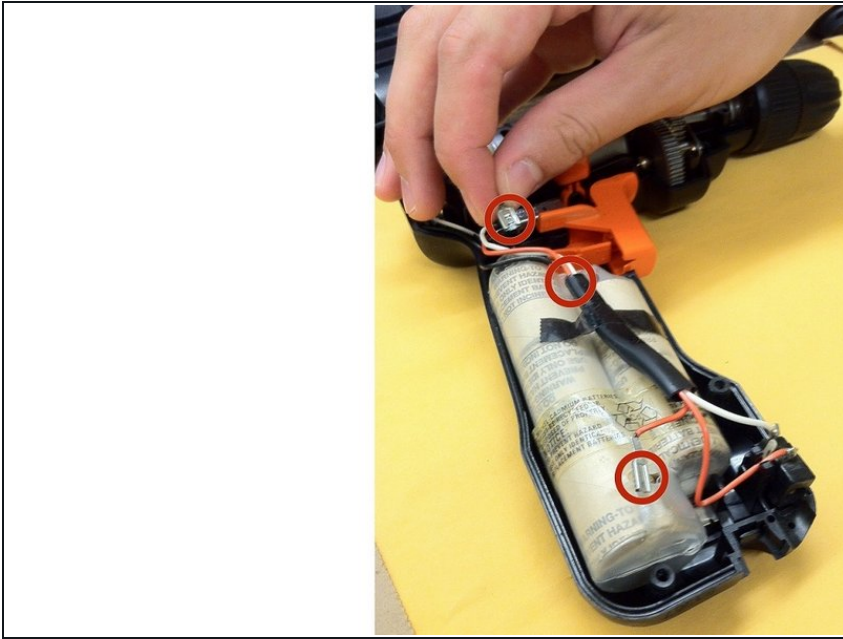
## Step 9



- Replace the gear and drill head assembly.
- Put the drill head back into where it originally was secured. Make sure it lines up with the molding of the plastic housing. Move the second large gear into where it locks into the motor gear.
- Make sure that the gold bearings and other small parts lock into the designated slots in the molding of the housing.

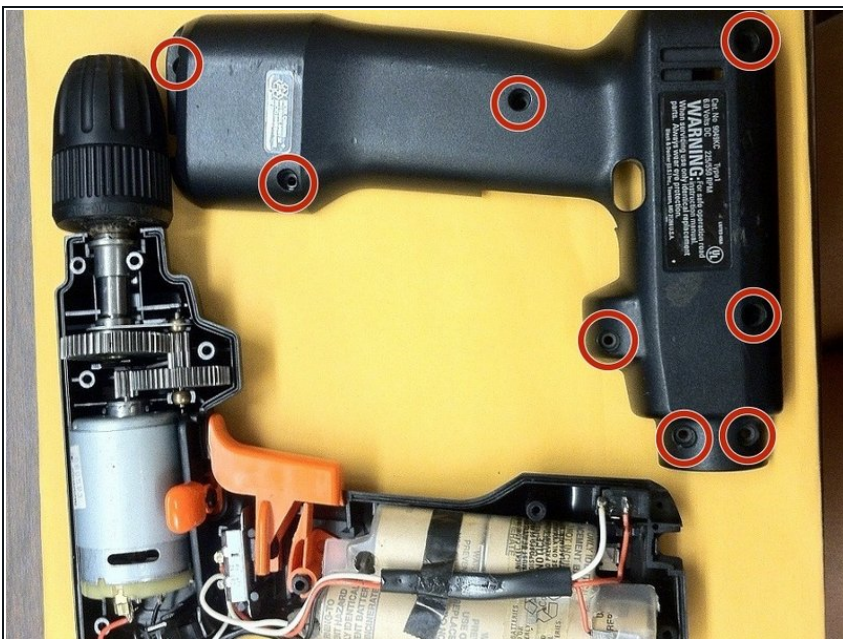


## Step 10



- Reconnect the battery wires to the battery terminals by fitting the wire terminals over the battery terminals where they were originally fitted.

## Step 11



- Put the upper housing back on the drill. make sure that the upper housing lines up with the lower housing screw holes.
- Put all eight screws back in the slots.
- Tighten the screws back into place with the Phillips head screwdriver.
- After the screws are back in place, make sure they are all snug.



## Step 12



- Turn on and test out the drill to make sure the new motor works.
- Congratulations on successfully installing your new motor!

Refer to this parts diagram if needed during these steps:  
<http://www.ereplacementparts.com/images/...>