



Acer Chromebook C710-2847 Cooling Fan Replacement

This guide will show you how to replace the cooling fan.

Written By: Bradley Pavy



INTRODUCTION

As a computer is used, it generates heat. The cooling fan pulls air through the device to cool it down. If it becomes clogged with dust or breaks, the computer will overheat.

TOOLS:

- [Phillips #0 Screwdriver](#) (1)
 - [Spudger](#) (1)
-

Step 1 — Battery



- Place the laptop on a flat surface with the bottom side facing up.
- Place the tip of a spudger or finger into the hole on the battery release slider.


Step 2



- Use the spudger to move the slider to the right and hold it there.
- With the slider held, use your other hand to pull the battery back away from the laptop.

Step 3 — Acer Chromebook C710-2847 Back Cover Replacement



 This step will void your device warranty.

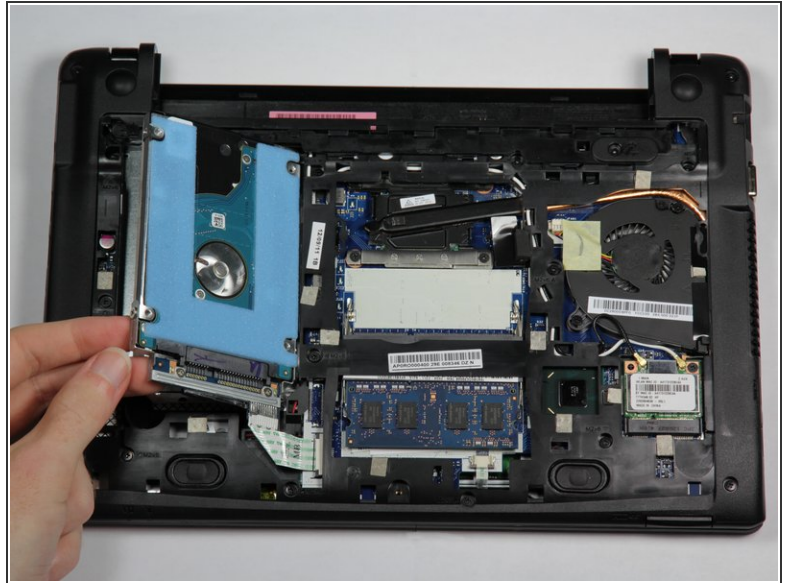
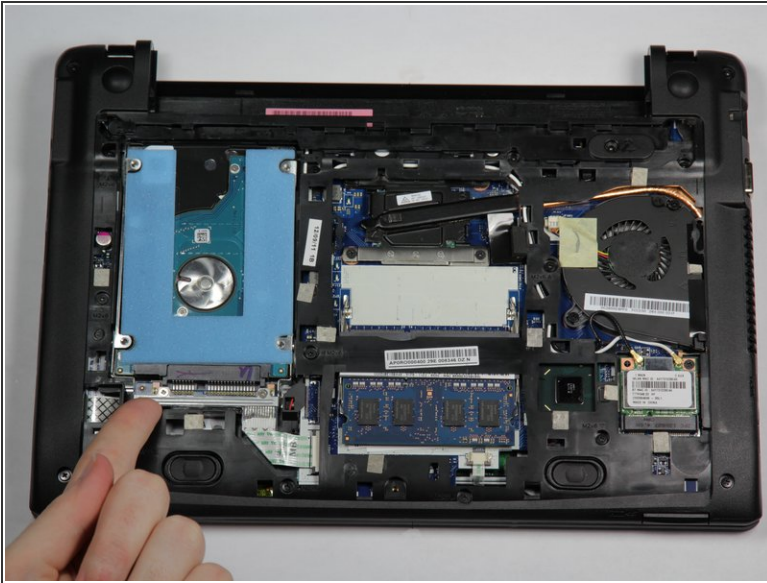
- Use the screwdriver to pierce the warranty sticker.
- Unscrew and remove the #0 6mm Phillips screw and set it aside.


Step 4



- Slide the back panel towards you. The best spots to place your fingers are on the bumpers.
- Lift on the front edge to remove the panel.

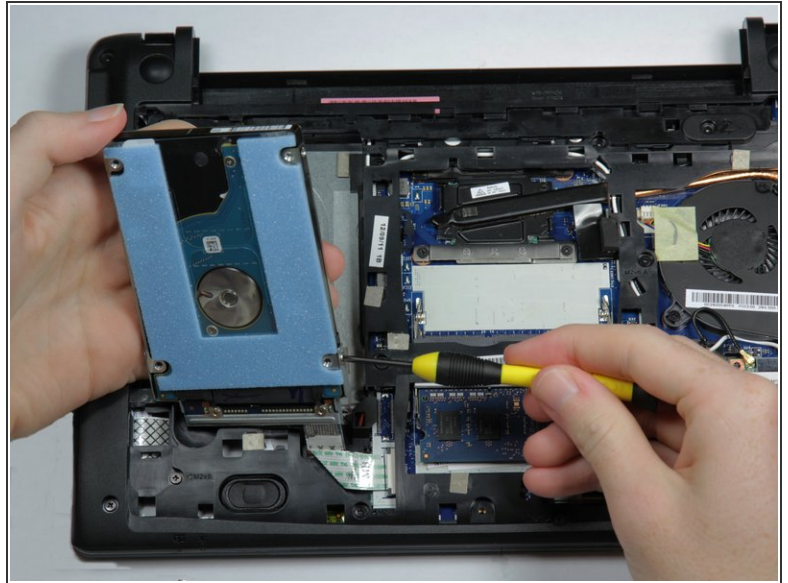
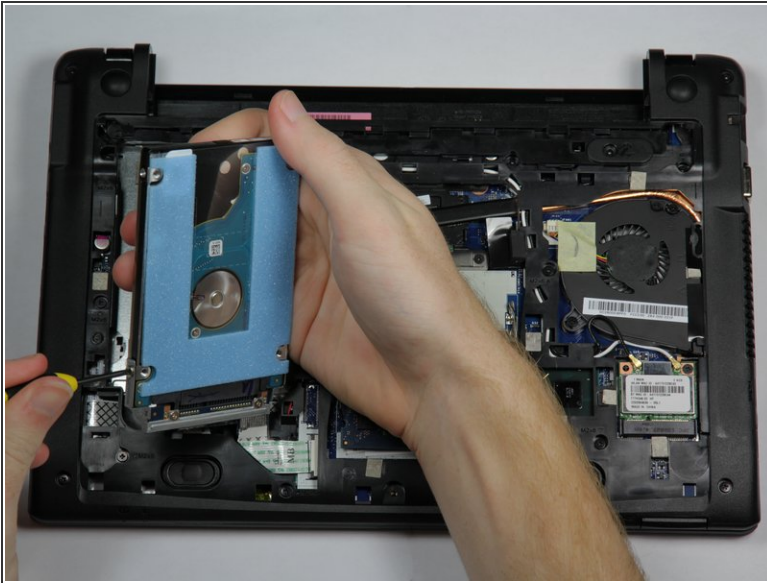
Step 5 — Hard Drive



 The hard drive assembly is attached to the laptop by a ribbon cable. Only lift the side of the drive facing you about an inch above the laptop. If you tear the ribbon cable the laptop will need to be serviced by a professional.

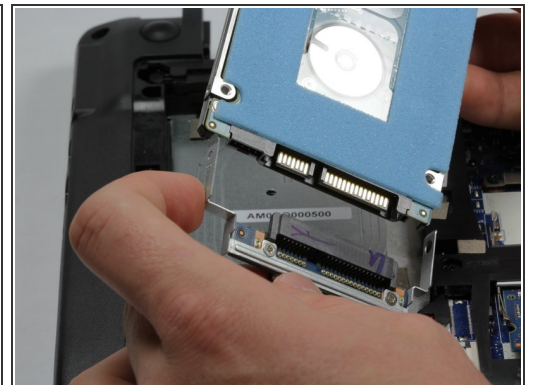
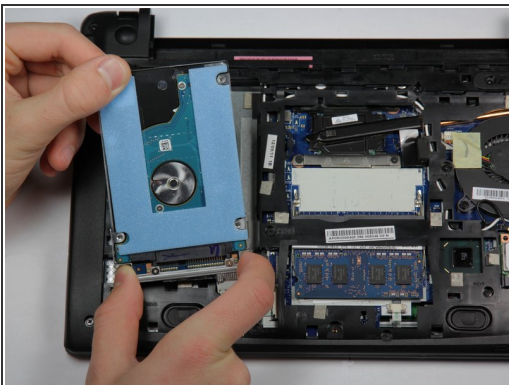
- Use one finger to lift up the hard drive assembly from the bottom left corner.

Step 6



- Hold the hard drive assembly keeping the end closest to you near the laptop. It's ok to tilt the far end of the drive up towards you.
- Unscrew the two silver #0 3mm Phillips screws on the left and right sides of the hard drive.

Step 7




- Hold the base of the hard drive in your right hand.
- Use your left hand to pull the hard drive away from its housing. Don't let the housing tug on the ribbon cable.

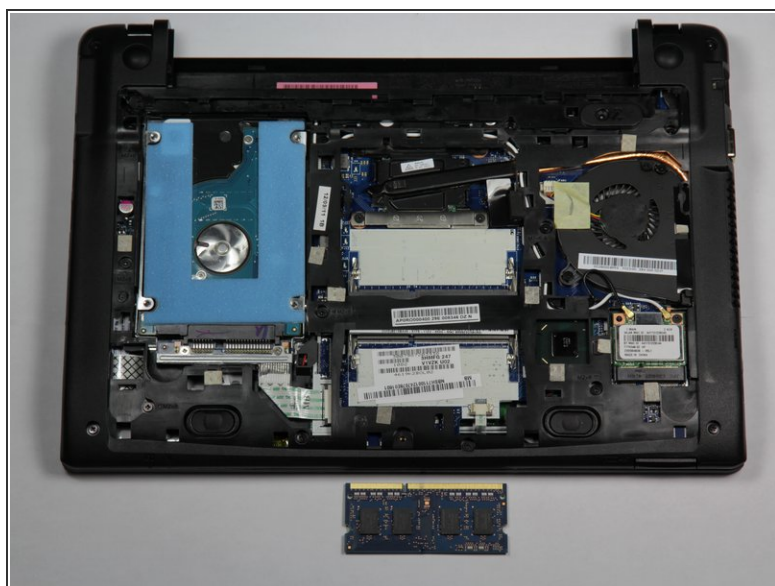
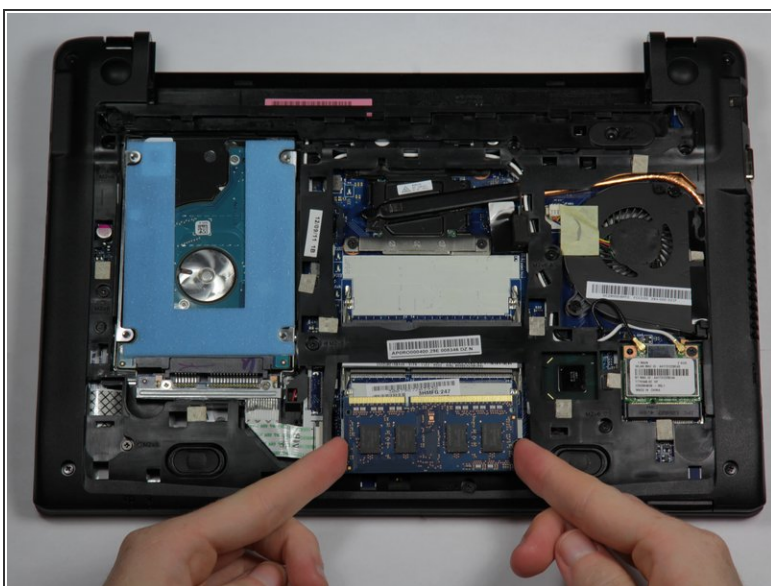
Step 8 — RAM



- Pull the metal tabs sideways away from the memory stick.

 The RAM stick will pop up.

Step 9



- Pull the RAM stick up and away from the laptop.

Step 10 — Wireless Card



- Use a spudger or your fingernails to lift up and unclip the two gold connectors on the top of the wireless card.

Step 11



- Unscrew the black #0 3mm Phillips screw at the top right of the wireless card.

Step 12



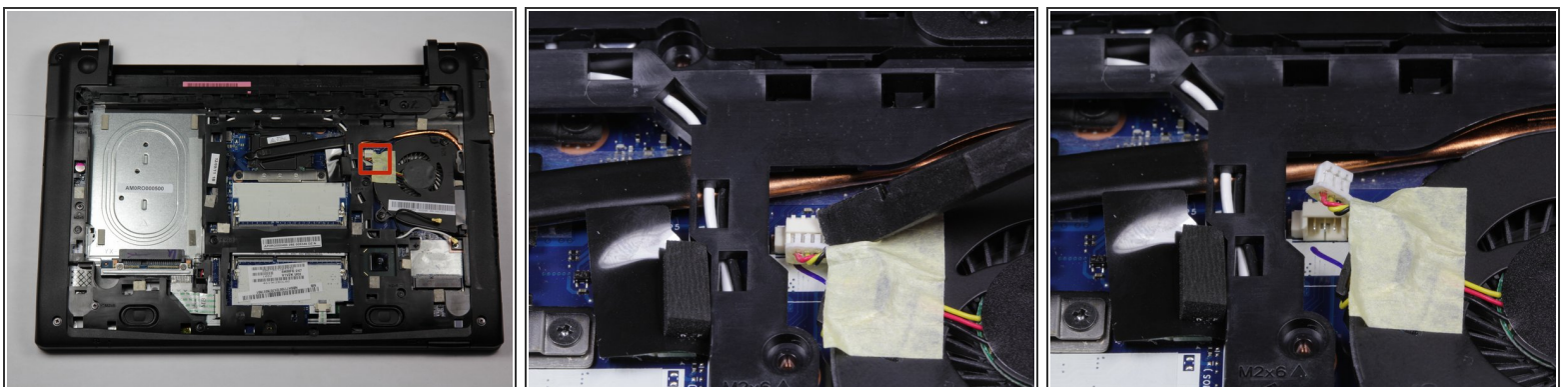
- The wireless card will spring up.
- Pull the wireless card up and out to remove it.

Step 13 — Cooling Fan



- Remove the SD card or placeholder by pressing the card in until it clicks and pops out.
- Pull the card out.
- Remove the screws.
 - Sixteen #0 6mm Phillips screws
 - One #0 3mm screw

Step 14



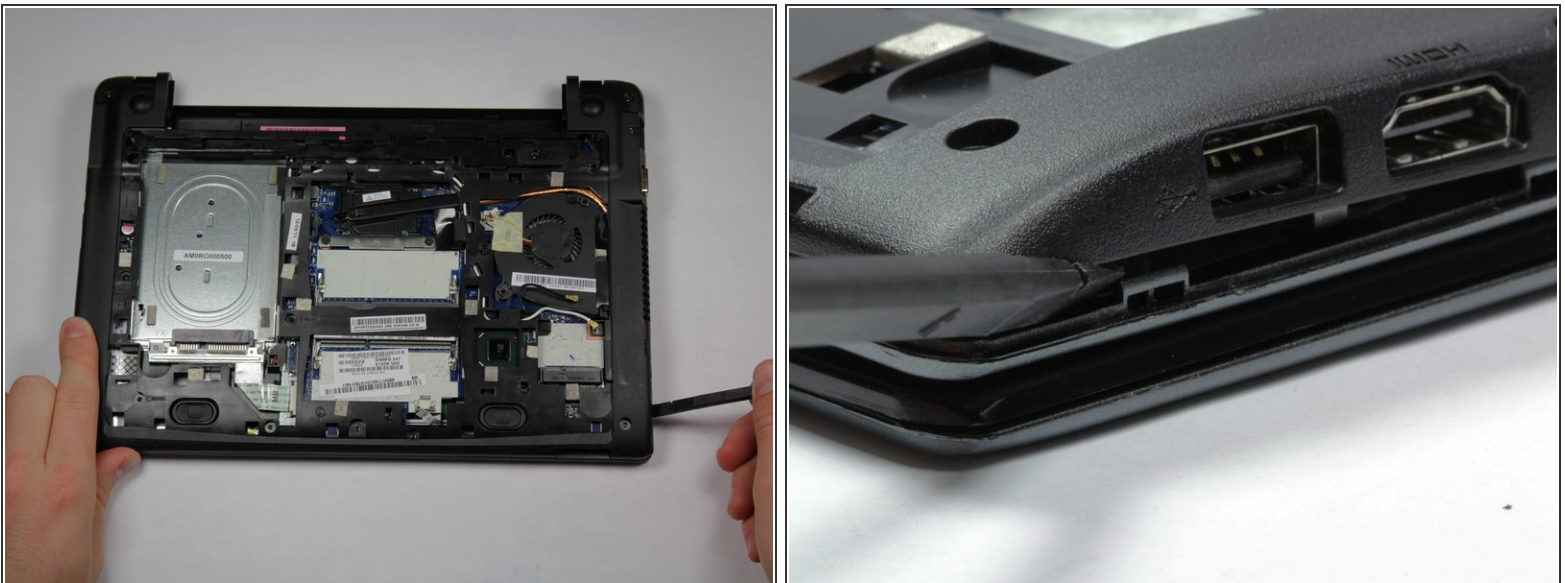
- Unplug the fan power cable by pulling the cable towards you using a spudger to help pop off the connection.

Step 15



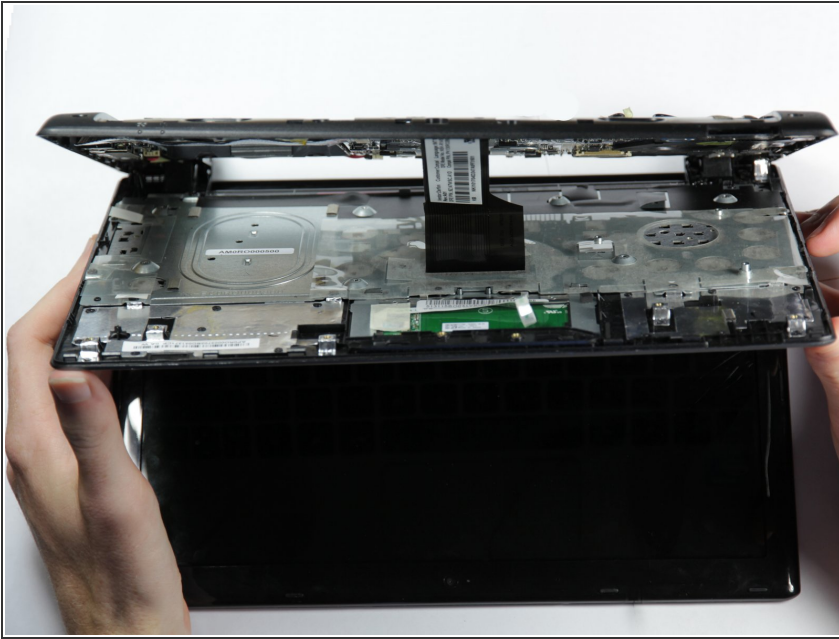
- Unplug the cable below the lower RAM slot by using the spudger to slide the two brown clips towards you.
- Gently pull the cable towards you using the clear plastic tab.

Step 16



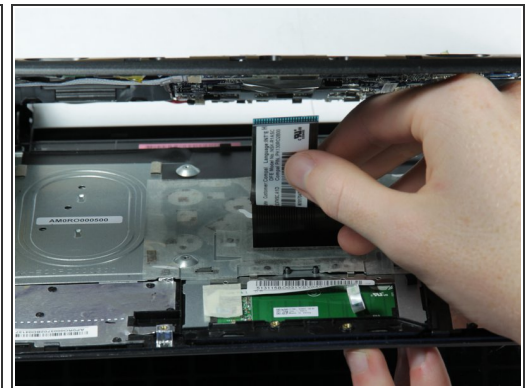
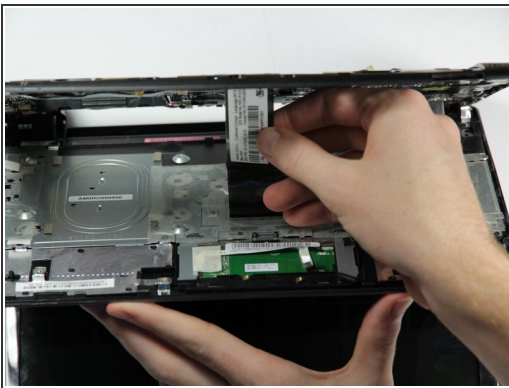
- Unclip the bottom half of the case from the laptop by using a spudger and starting at the USB port on the right side of the laptop. Then work your way clockwise around the laptop.

Step 17



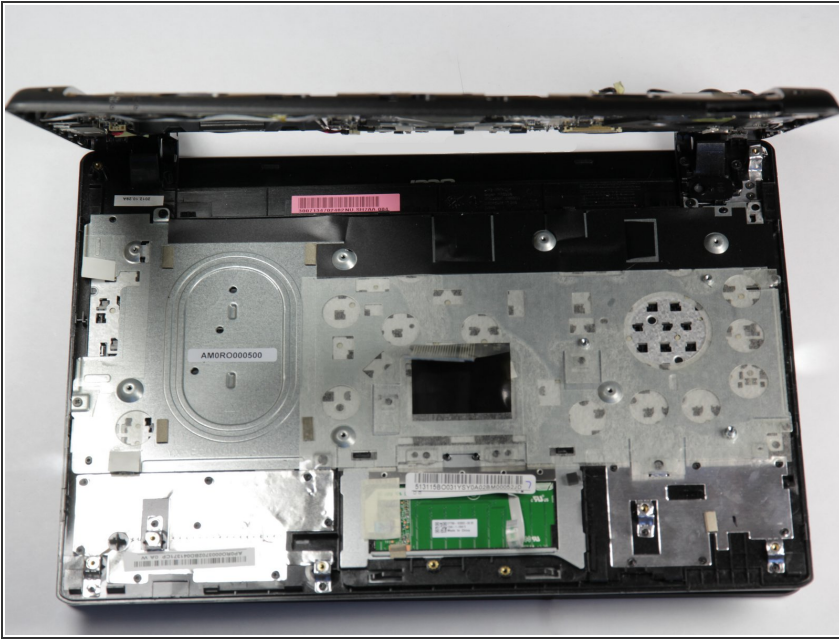
- Open the laptop hinge about 45 degrees.
- ⚠ Lowering the keyboard assembly too far will damage the keyboard ribbon cable. Do not let the cable stretch.
- Lower the keyboard assembly halfway between the case and the screen.

Step 18



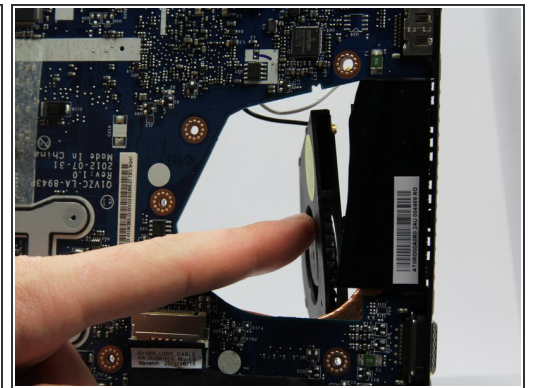
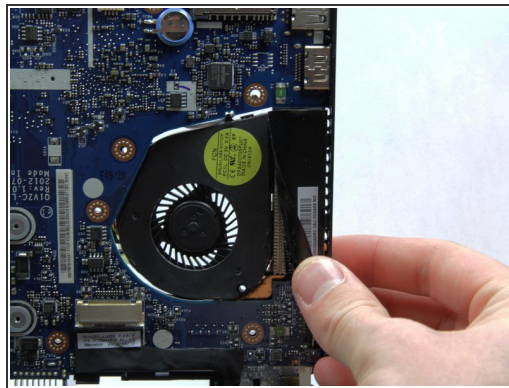
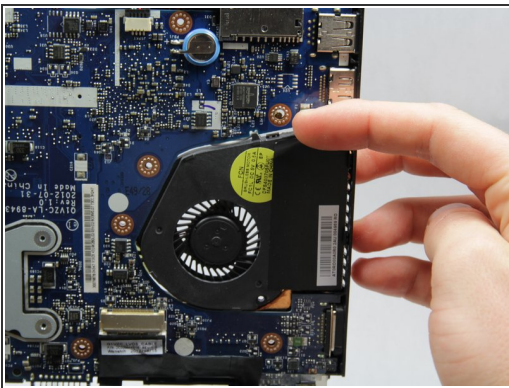
- Push down on the black tabs with a spudger to free the ribbon cable from the case.
- Gently pull the ribbon cable out of its slot.

Step 19



- Lower the keyboard assembly towards the screen until the clips near the hinges detach.
- Set the keyboard assembly aside.

Step 20



- Open the hinge to about 90 degrees.
- Lift up the left edge of the tape holding the fan on the right side of the motherboard.
- Push the fan out of the back of the laptop.

To reassemble your device, follow these instructions in reverse order.