

Written By: Vi Le



---

## INTRODUCTION

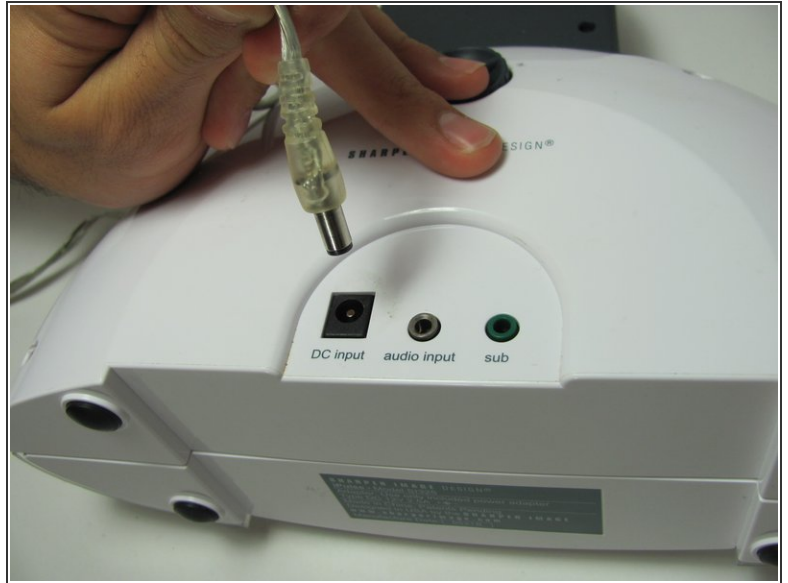
Use this guide to remove the motherboard. There is soldering required, so if you need assistant please read this soldering technique [page](#).



### TOOLS:

- [Phillips #1 Screwdriver](#) (1)
  - [Phillips #2 Screwdriver](#) (1)
  - [Soldering Iron](#) (1)
-

## Step 1 — Outer Case




- Gently position the device so that the buttons and speakers lie face down.
- Unplug the power cord from the "DC Input."


## Step 2




- Remove the four 12mm phillips head #2 screws located along the outer edge of the white case.

 Be careful! There are two small, easily-broken, plastic tabs at the bottom of the device keeping it together.

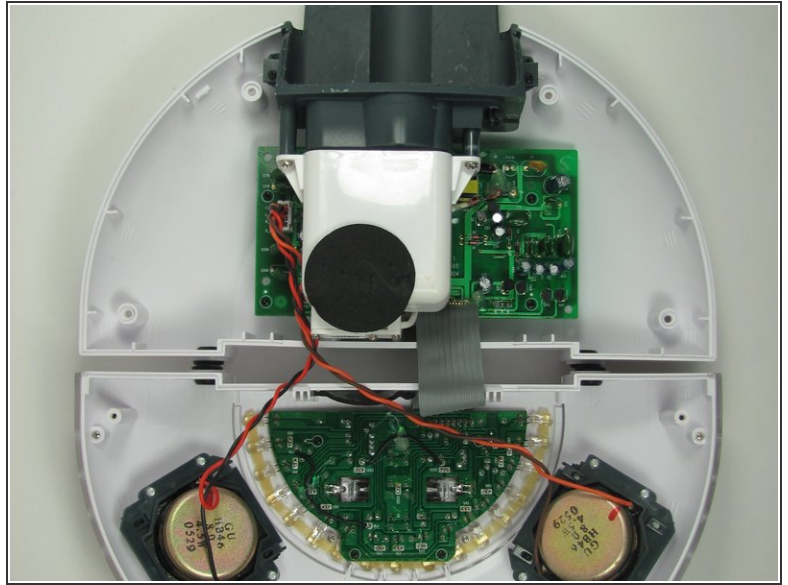
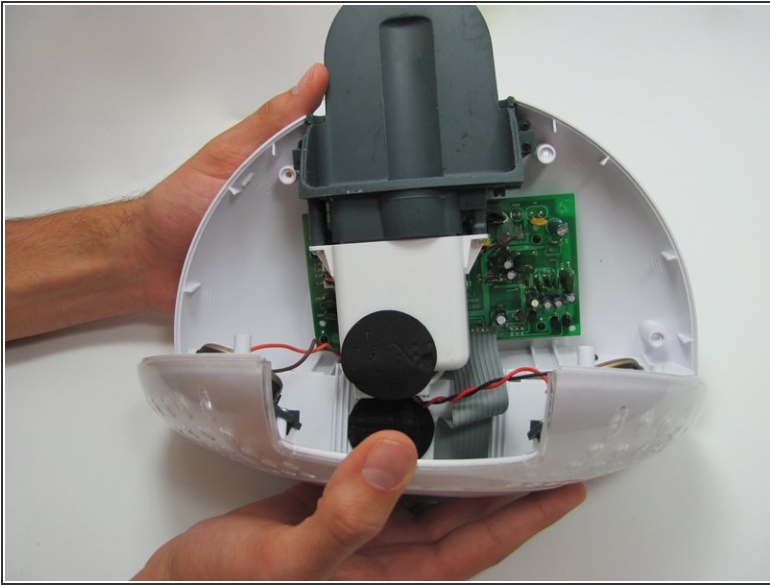
- Once you remove the screws, pick the device up so that the grey label on the bottom of the device faces toward you.
- With your thumbs on either side of the grey label, slowly push with both thumbs until the case pops open.

 A small gap will open as the two tabs are released.

 Do not pull the two halves apart yet. They are held together by the speaker wire.



### Step 3



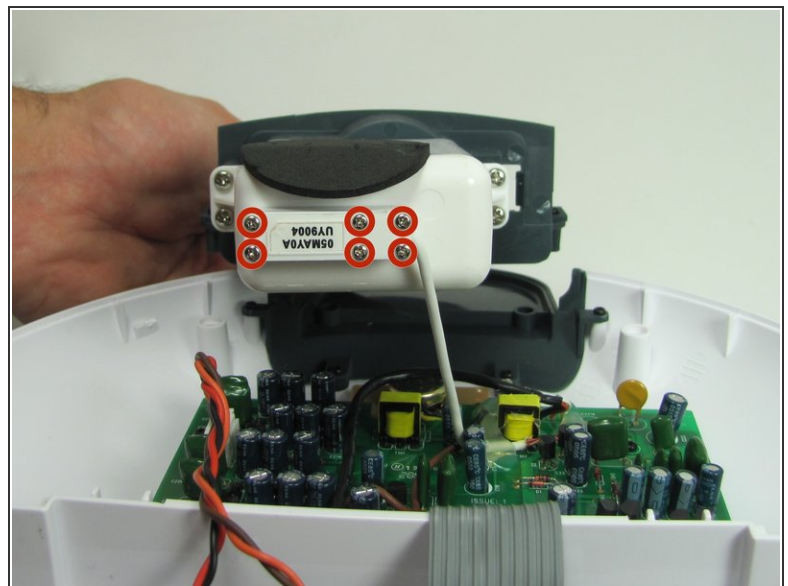
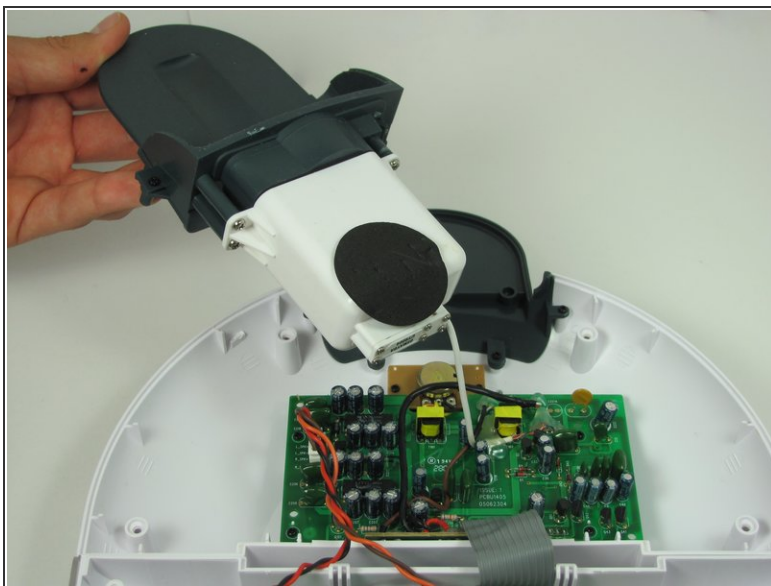
- Grip both sides of the top round part of the case and carefully open it like a clam. The bottom of the two halves are connected by the speaker wire. Do not separate by more than 1 centimeter.
- Grip either side of the top round part of the case and carefully open the device to reveal all the hidden treasures inside!
- Lay the device down, so that all the internal components are facing upwards.

## Step 4 — Motherboard



- Turn the device over so that the internals are facing down.
- Remove the three 7mm Phillips #1 screws connecting the Zipconnect unit.

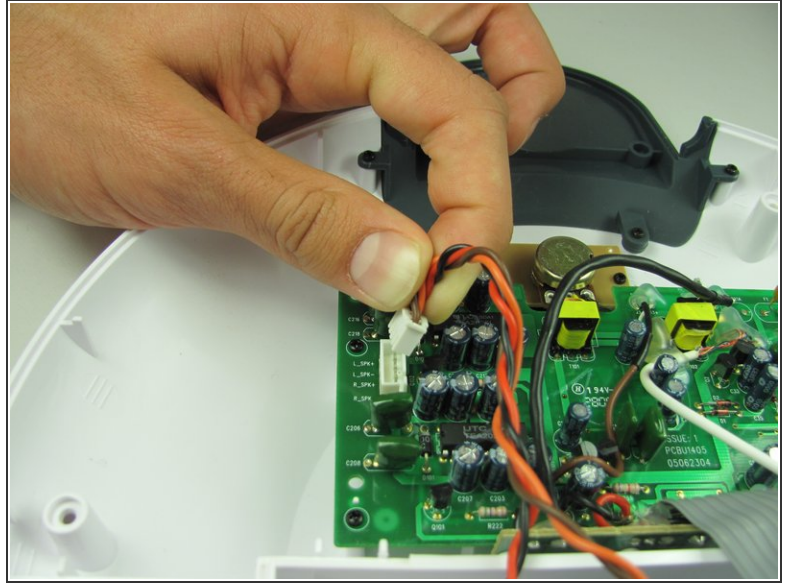
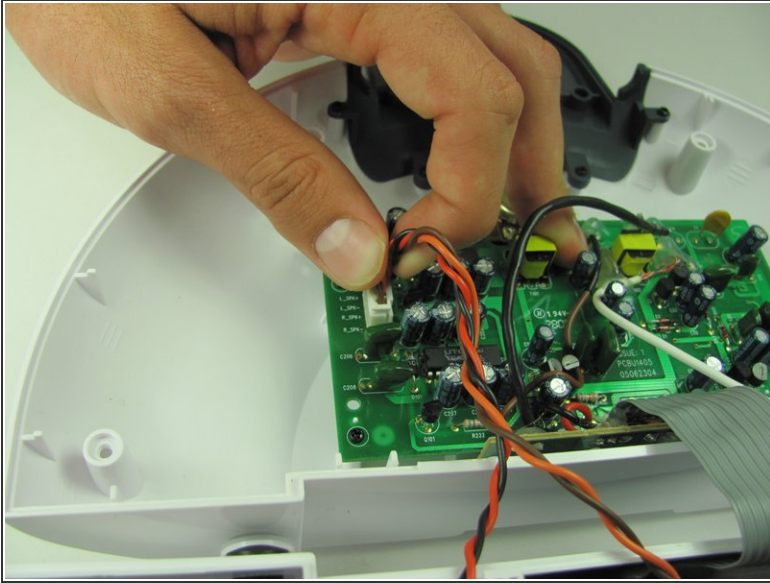
## Step 5



- Turn the device over again so you are looking at the internals.
- ⓘ The Zipconnect unit will lift out but will still be attached by a wire connected to the motherboard.
- Remove the six 7mm Phillips #1 phillips screws attaching the Zipconnect unit to the motherboard wire and set the unit out of the way.

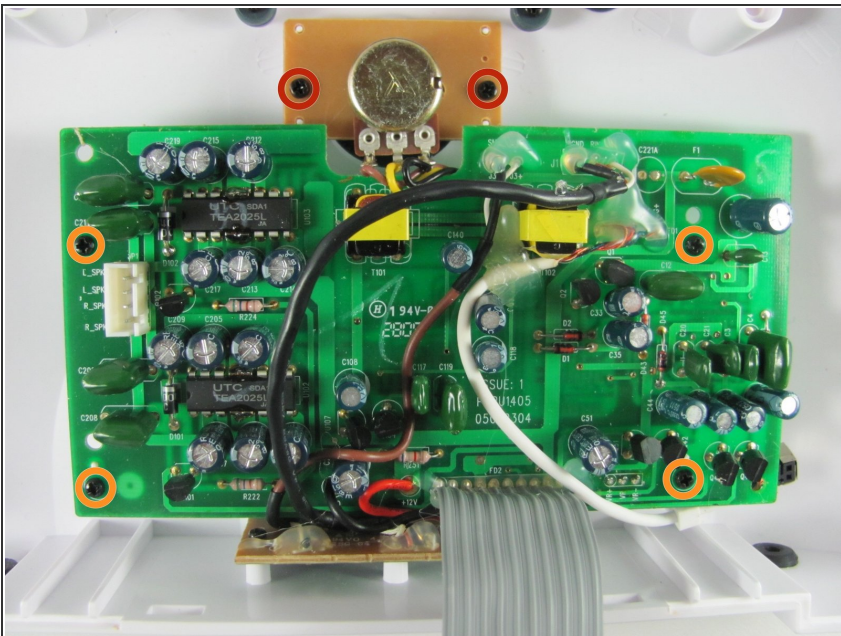
This document was generated on 2020-11-28 03:03:41 AM (MST).

## Step 6



- Disconnect the speaker wire from the motherboard by firmly gripping the wires close to the connection with two fingers and pull the connector out.
- ⓘ Wiggling the connector back and forth as you pull will make removal easier.

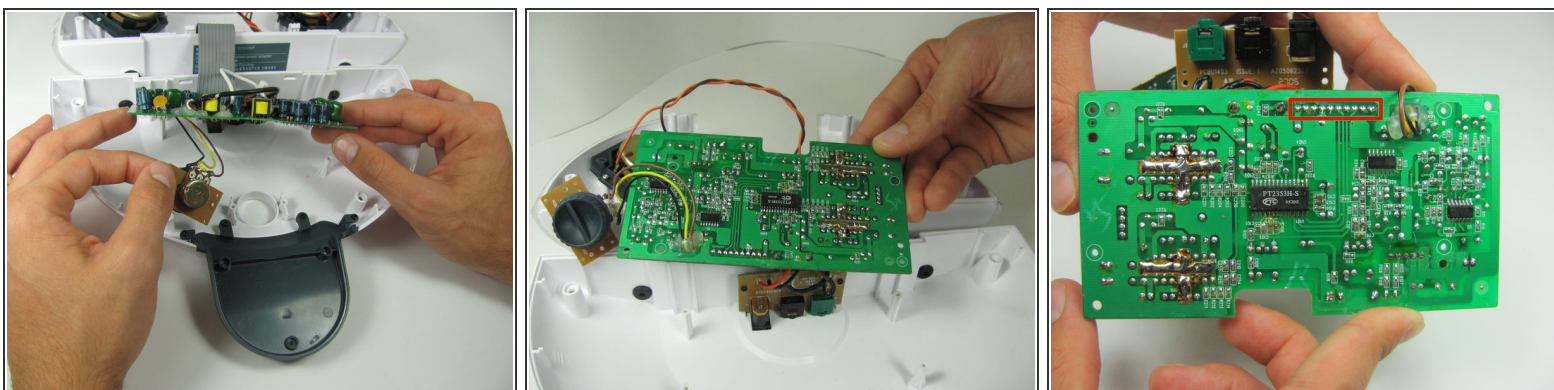
## Step 7



- Remove the two 11mm Phillips #1 screws attaching the small brown circuit board to the plastic outer case.
- Also remove the four 11mm Phillips #1 screws attaching the motherboard to the plastic case.



## Step 8



- Lift up on both the motherboard and brown circuit board which contains the light intensity dial.
- Turn over the motherboard and remove the solder connecting the wide, flat, grey wire.

To reassemble your device, follow these instructions in reverse order.