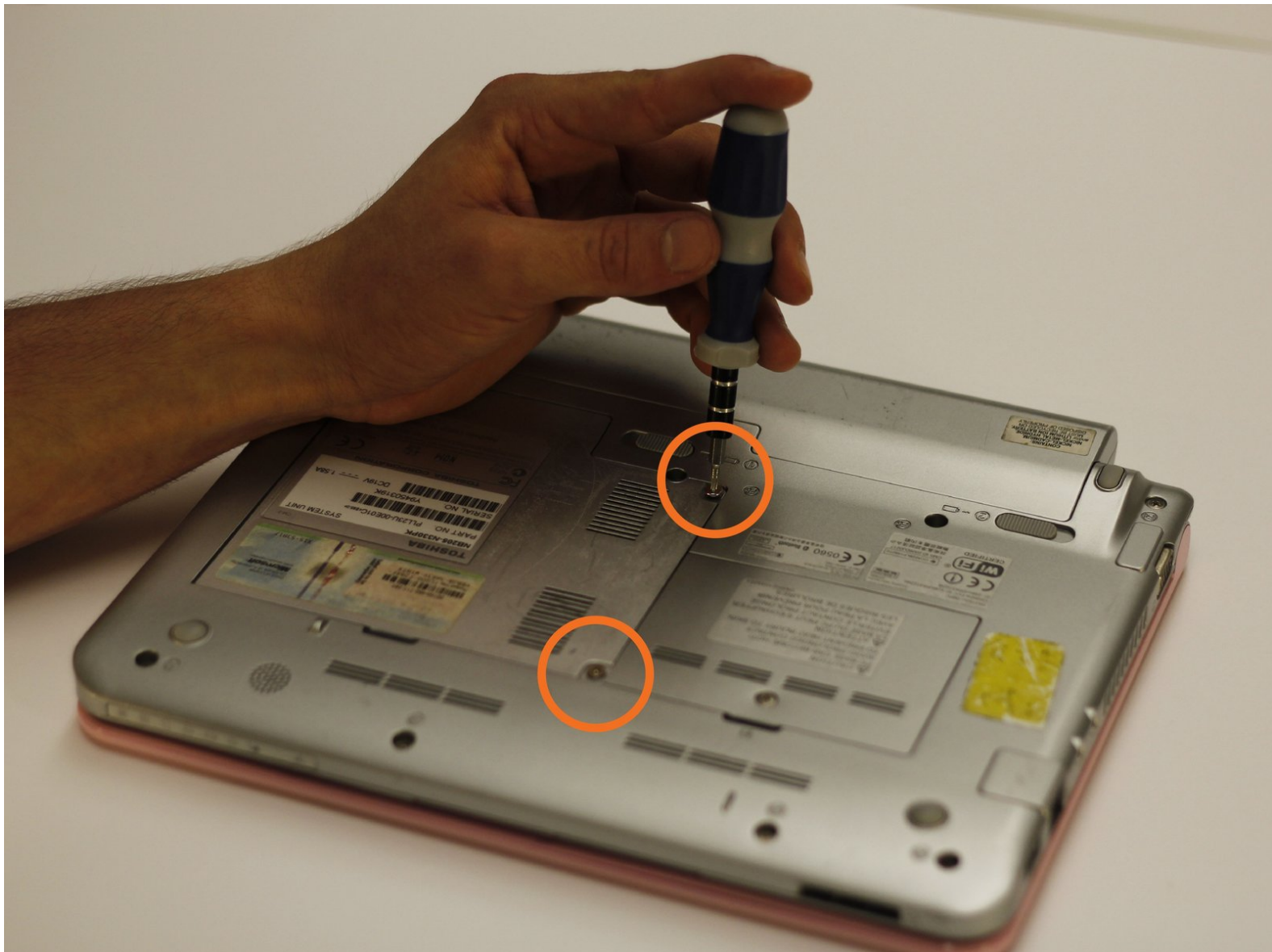




Toshiba NB205 N330PK Hard Drive Replacement

This guide demonstrates how to replace the hard drive in the netbook. It will require the removal and replacement of the cover panel which is covered in a previous guide (4 Steps).

Written By: Mason McCaskill





TOOLS:

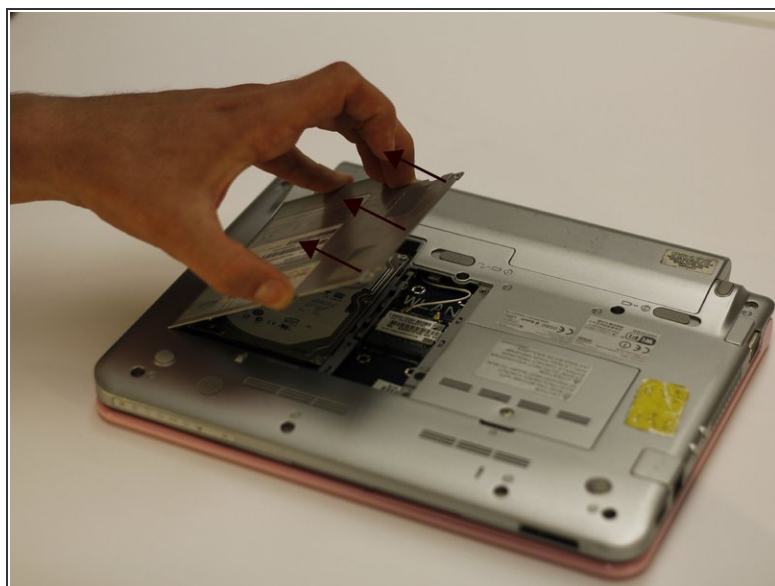
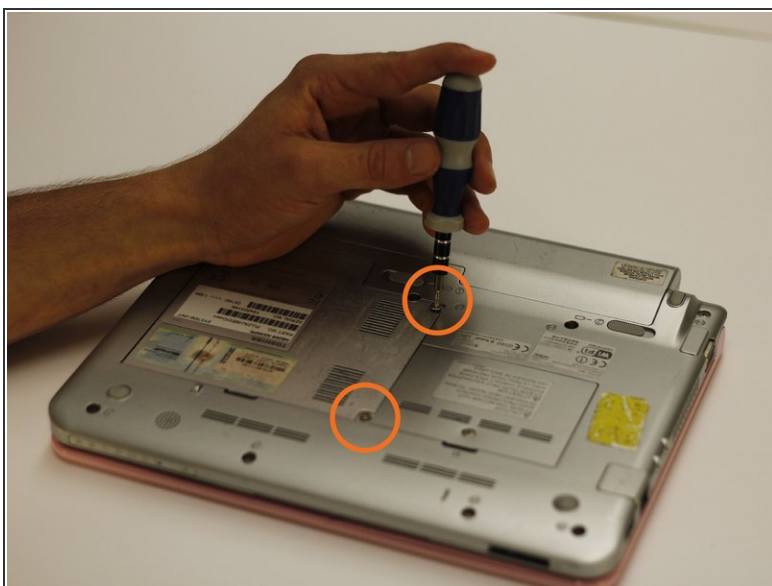
- [64 Bit Driver Kit](#) (1)
- [Phillips #0 Screwdriver](#) (1)



PARTS:

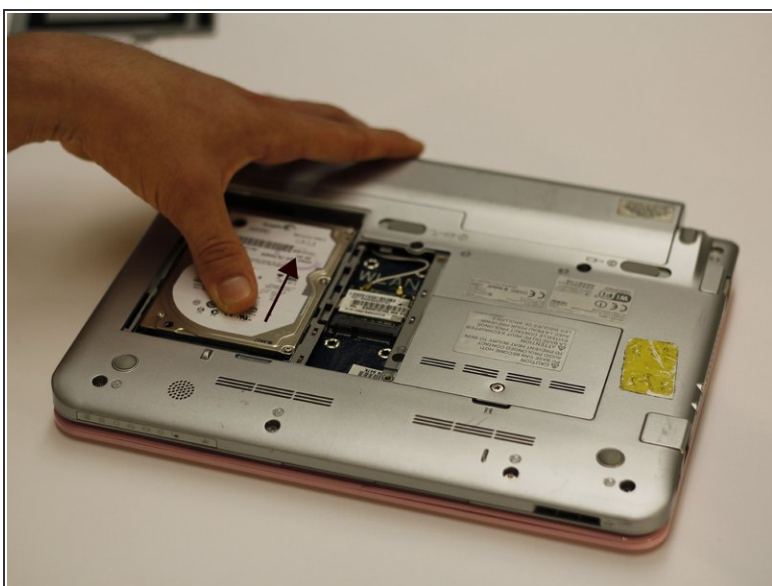
- [120 GB 5400 RPM Seagate ATA Hard Drive \(New\)](#) (1)

Step 1 — Hard Drive



- To expose the hard drive, use a bit driver and a Star #0 bit to remove the two designated screws.
- Gently lift the panel off.

Step 2



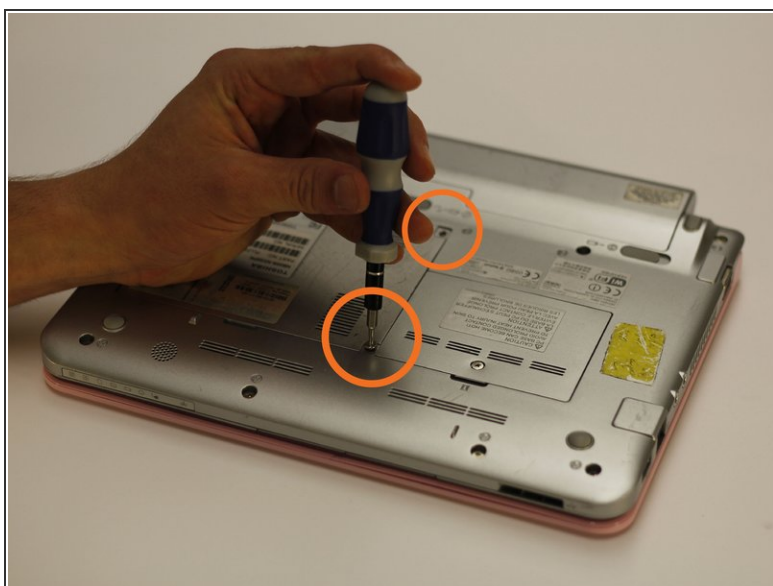
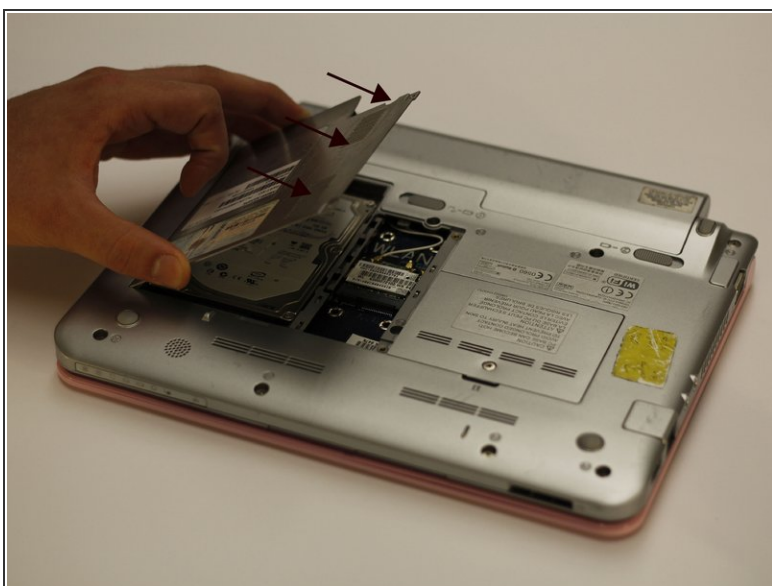
- With the panel removed, slide the hard drive towards the top of the netbook with moderate force.
- This will free the hard drive from its original location.

Step 3



- Obtain a new hard drive.
- Apply firm pressure to secure the new hard drive into the old hard drive's location.

Step 4



- Place the back panel in its original position.
- Using the bit driver and Phillips #0 bit, secure the hard drive panel to the netbook body.

