



# Gateway KAV60 LT2016U Cooling Fan Replacement

Gateway KAV60 LT2016U cooling fan replacement.

Written By: Brandon Bowman



---

## INTRODUCTION

Once you've extracted the motherboard, replacing the cooling fan only entails removing a few screws.

---



### TOOLS:

- [Phillips #0 Screwdriver](#) (1)
  - [iFixit Opening Tools](#) (1)
-

## Step 1 — Battery



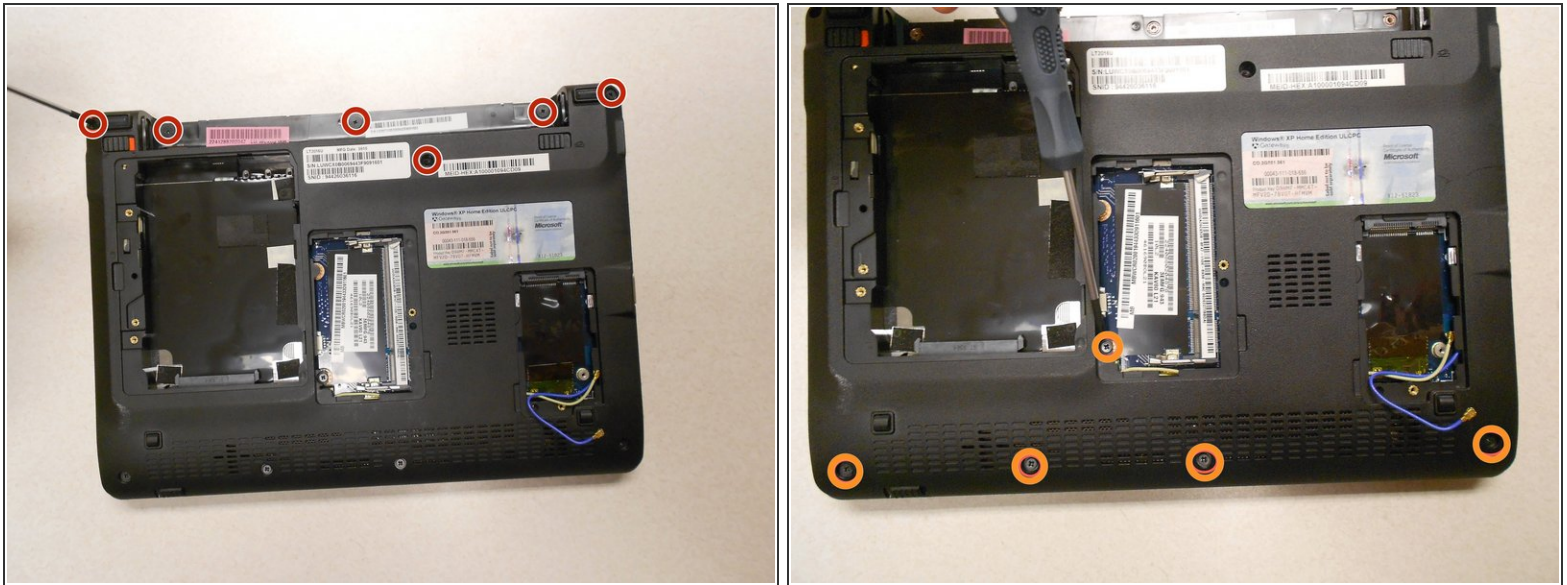
- Unlock the tab located in the top left corner of the netbook.
  - The red tab indicated that the battery has been properly unlocked.
  - Remove the battery.
- i** When working with electronics, it is always wise to remove the power source before taking the device apart.

## Step 2 — Upper Cover



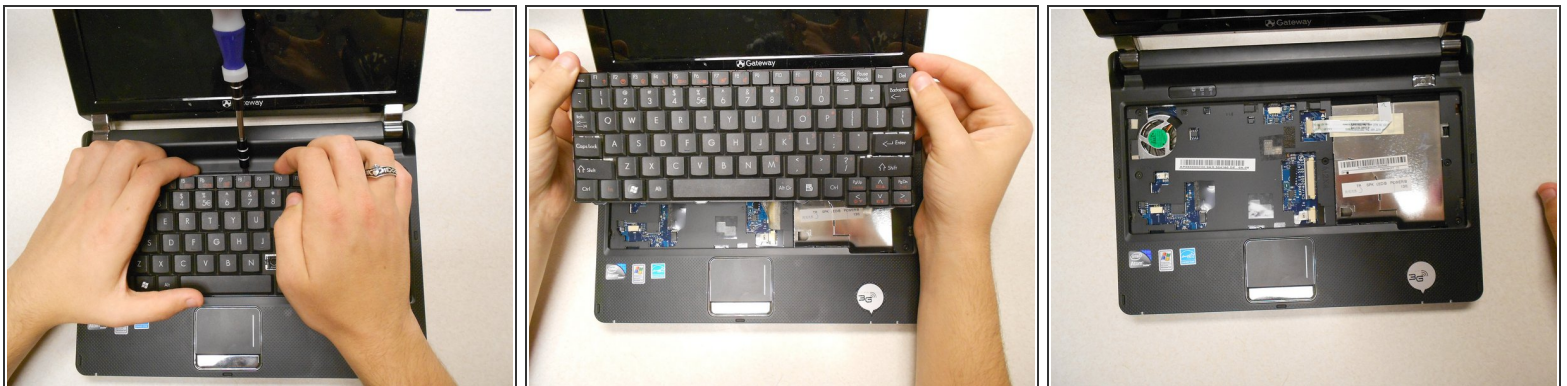
- !** Make sure the RAM, hard drive, and WiFi card have been removed from the computer before trying to take off the cover so they are not damaged in the process.

## Step 3



- Remove six (6) 5mm screws, two (2) 17.5mm screws, and three (3) 2.5mm screws from the back, using the Phillips #0 screwdriver, as marked here.

## Step 4



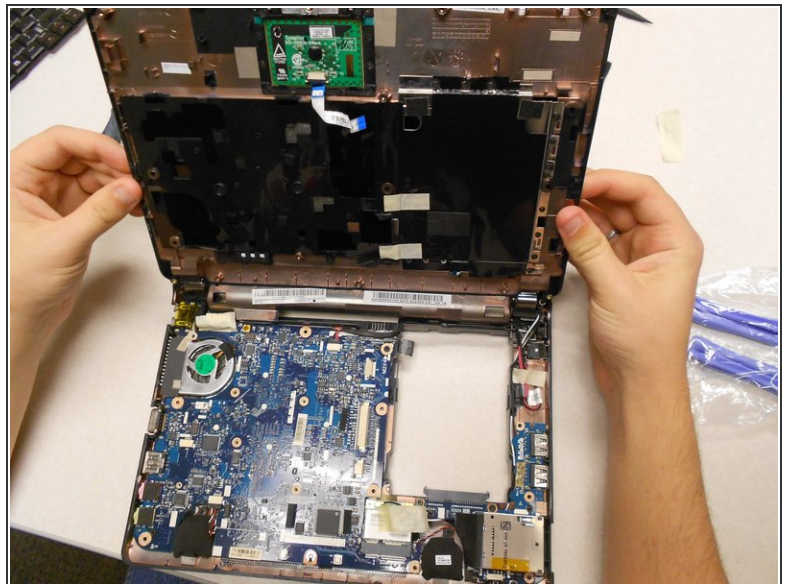
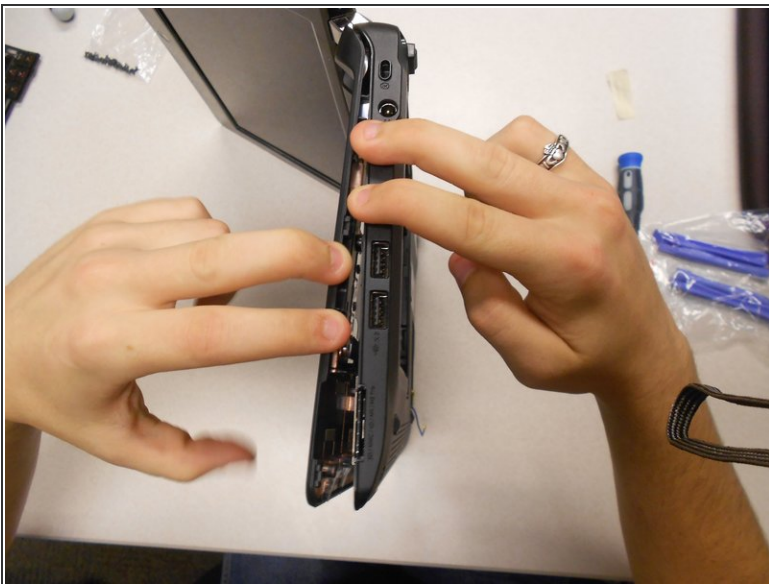
- Pry up the keyboard using a spudger or plastic opening tool in the exact location shown in the photograph.  
⚠ Don't use a screwdriver as a pry tool as shown in this example.
- Carefully disconnect the keyboard ribbon cable from the motherboard, and remove the keyboard.

## Step 5



- Remove the five (5) 5mm screws shown here using the Phillips #0 screwdriver.

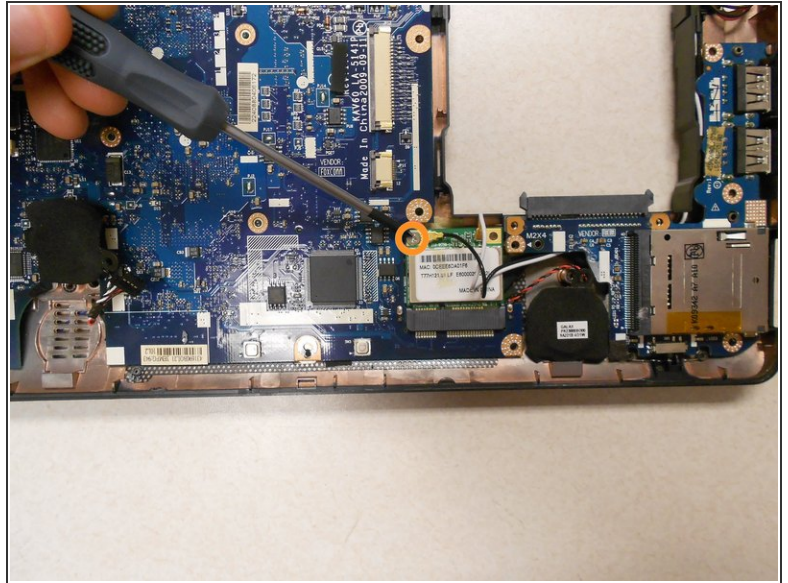
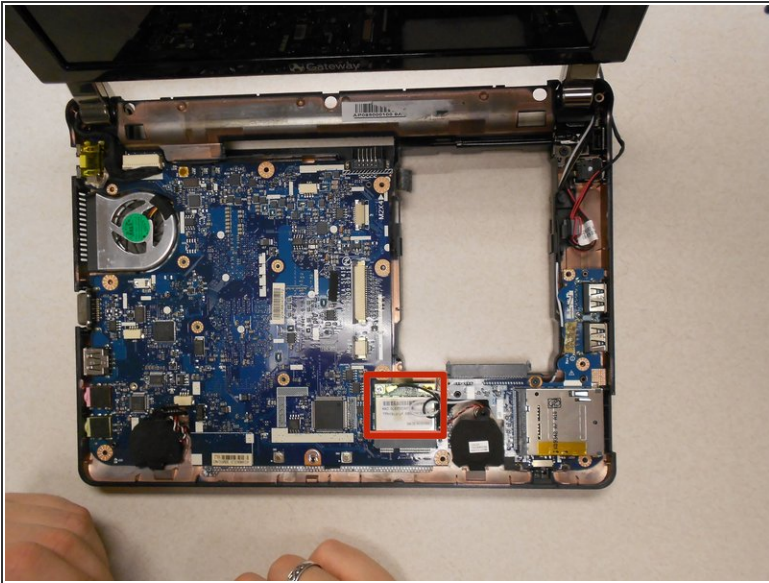
## Step 6



- Separate the upper cover from the back cover. It is possible to do this without a tool, but you may also use a plastic opening tool for added leverage.
- Be careful to keep even pressure all the way around the cover so that it is not bent beyond repair.
- Carefully disconnect two ribbon cables to complete the separation of the upper cover.

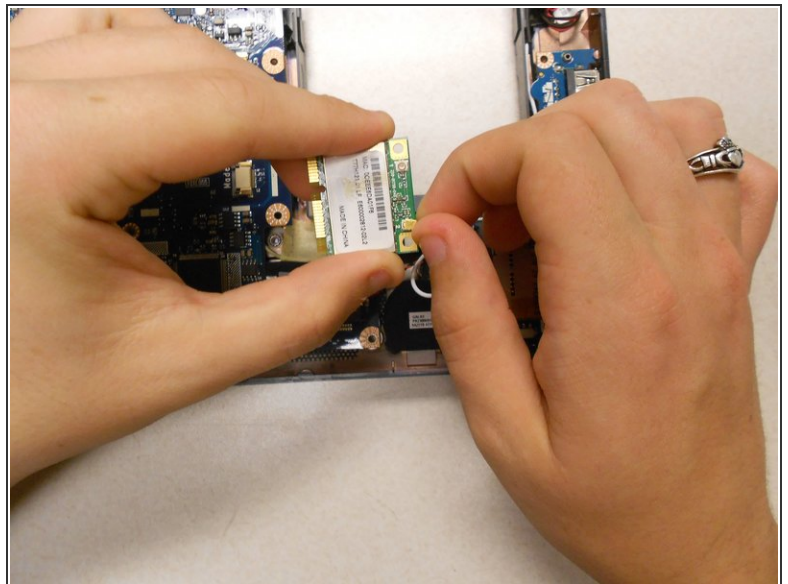
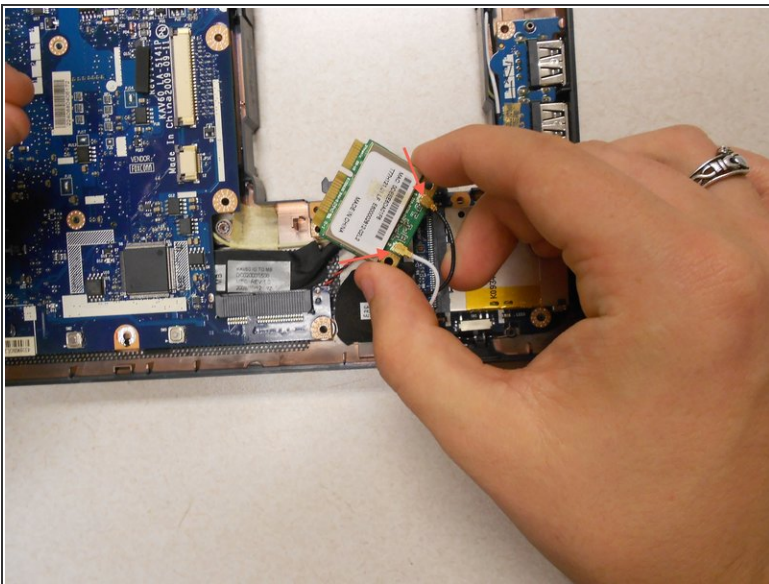
This document was generated on 2020-11-13 04:12:35 PM (MST).

## Step 7 — WiFi Card



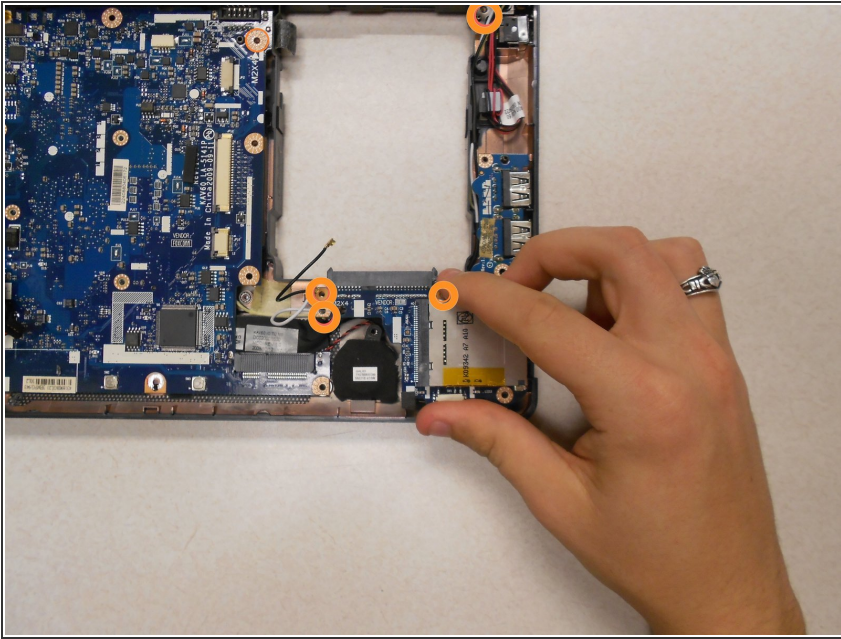
- The WiFi card is shown here.
- Remove the one (1) 5mm screw holding the card to the motherboard using a Phillips #0 screwdriver.

## Step 8



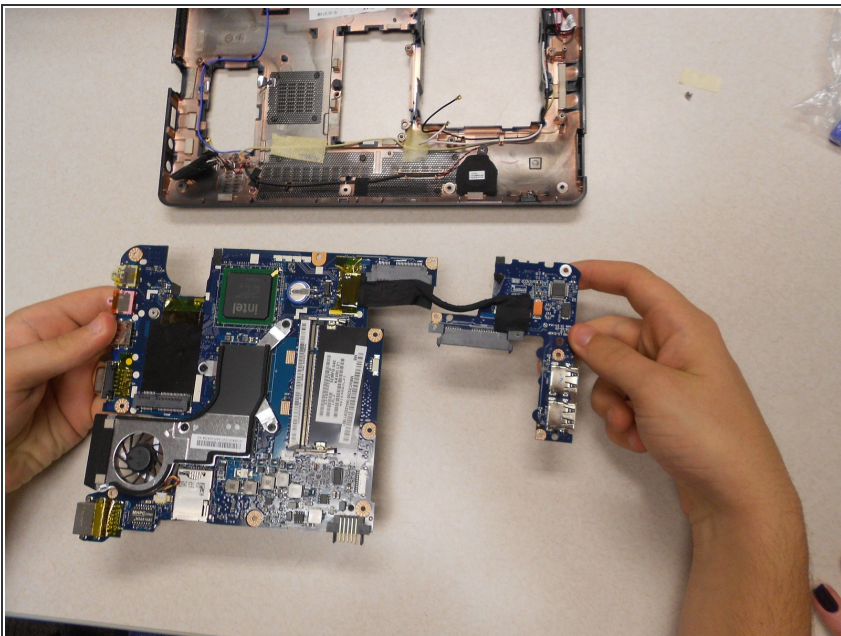
- Disconnect the wires on the WiFi card. This can be done easily by applying pressure to the connections until they pop off of the card.

## Step 9 — Motherboard



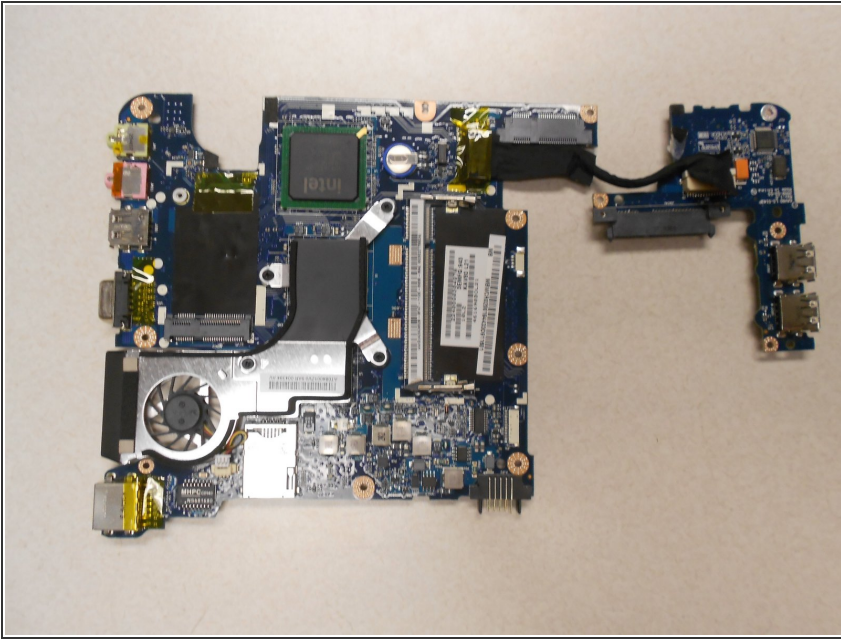
- Using a Phillips #00 screwdriver, remove the four (4) 5mm screws holding the motherboard in place.

## Step 10



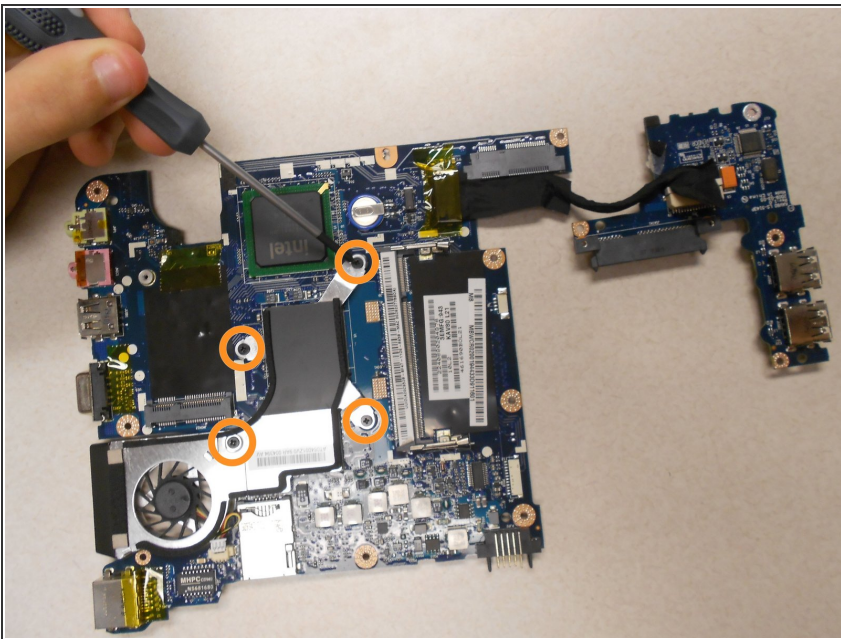
- Remove the motherboard by lifting it gently from the bottom cover.
- ⓘ This image is the rear view of the motherboard.

## Step 11 — Cooling Fan



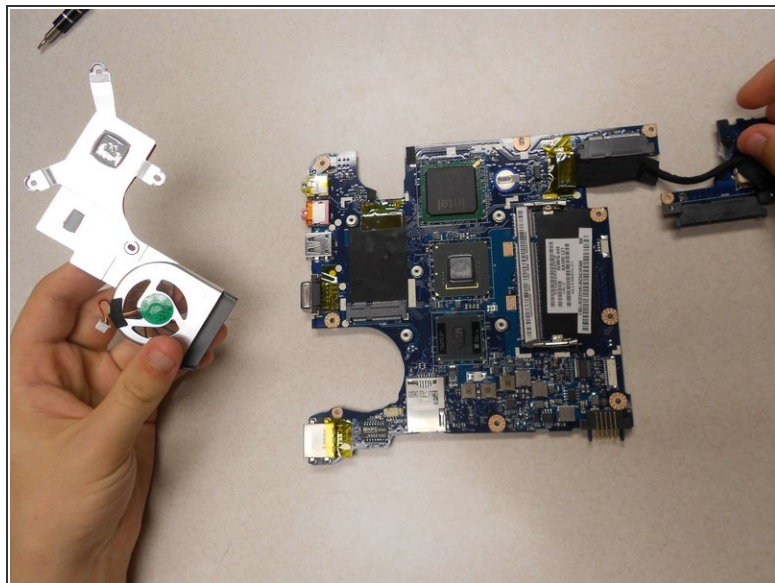
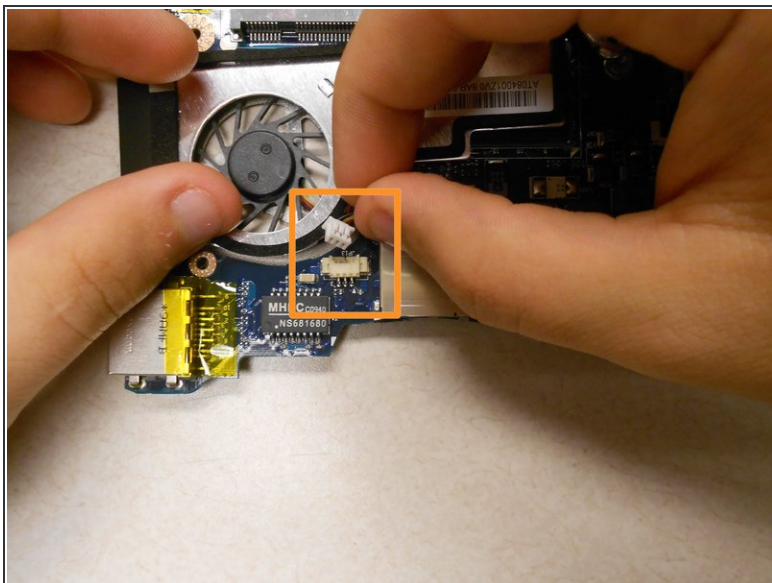
- Begin with the motherboard of the computer, as shown here.

## Step 12



- Using the #00 Phillips head screwdriver, remove all four (4) screws marked here.

## Step 13



- Gently disconnect the fan cable from the motherboard by pulling on the connection until it slips out.
- The fan should then be fully disconnected from the motherboard and ready for replacement.

To reassemble your device, follow these instructions in reverse order.