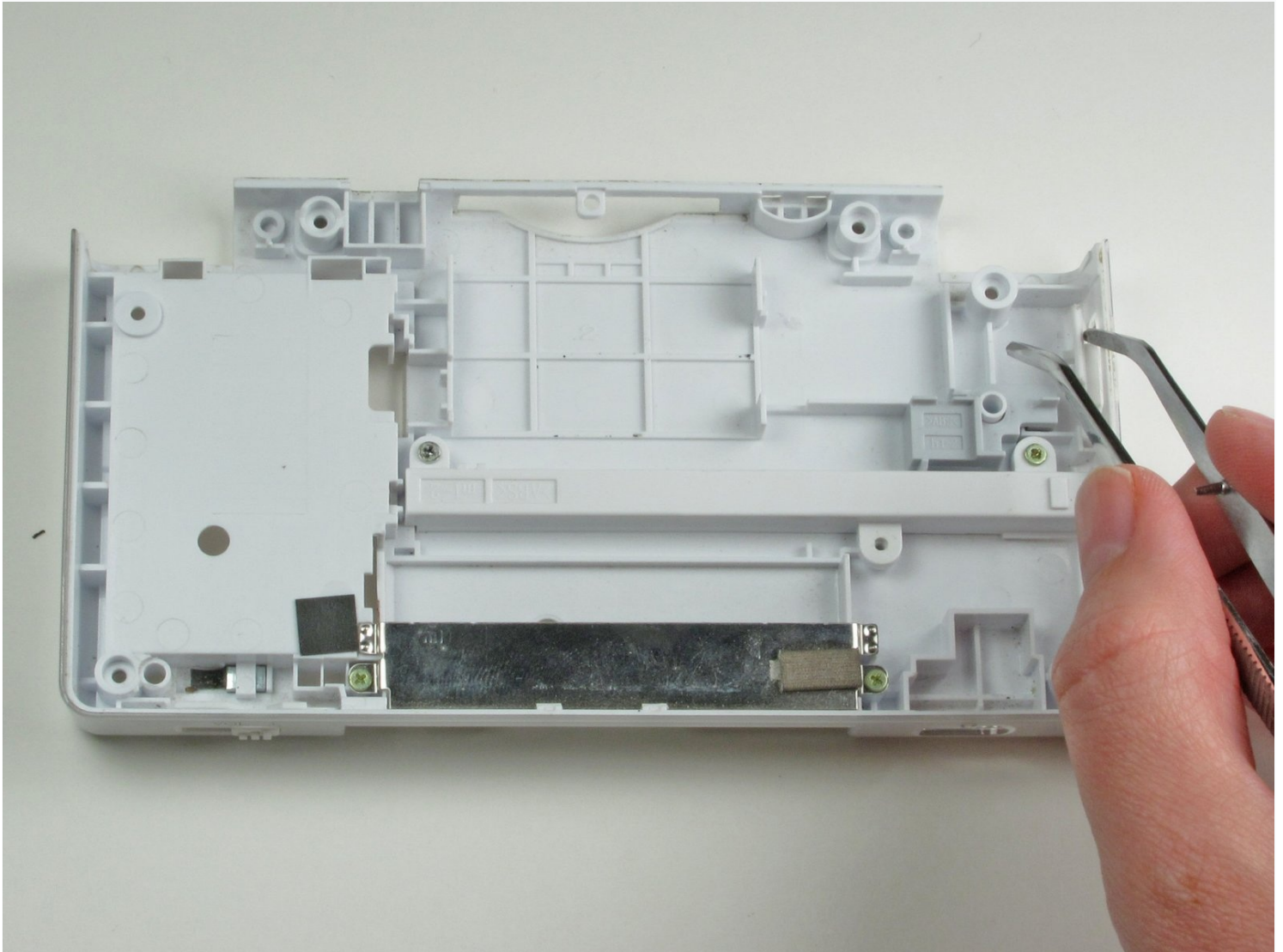




Nintendo DS Lite Power Switch Replacement

Replace the power switch on the Nintendo DS Lite.

Written By: Philip



INTRODUCTION

Replace the power switch on the Nintendo DS Lite.

TOOLS:

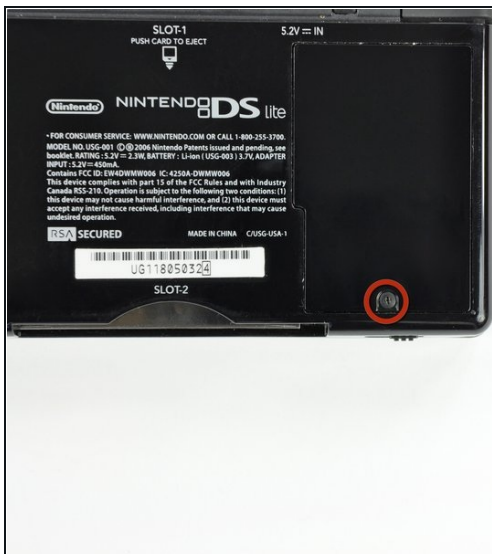
Phillips #00 Screwdriver (1)

Spudger (1)

Tri-point Y1 Screwdriver (1)

Tweezers (1)

Step 1 — Battery



- Unscrew the Phillips screw securing the battery cover to the lower case.
- ① The screw remains captive to the battery cover.
- Pry the battery cover upward with a spudger or fingernail, and lift out of the lower case.

Step 2



- Wedge the edge of a spudger in between the side of the battery and the lower case housing and pry upward to dislodge the battery.
- Remove the battery from the DS Lite.

Step 3 — Lower Case



- Use the tip of a spudger to pry both rubber feet off the DS Lite.

Step 4



- Remove the following screws securing the lower case to the body of the DS Lite:
 - Two 4.3 mm gold Phillips screws
 - One 3.9 mm black Tri-Wing screw
 - One 3.3 mm silver Phillips screw
 - Three 5.5 mm silver Tri-Wing screws

Step 5



① Remove the cover from the Game Pak slot before continuing.

- Insert the edge of a spudger in between the lower and upper case near the top right corner of the DS Lite.
- Carefully run the spudger along the right edge of the DS Lite, creating an opening in the process.
- Continue running the spudger along the backside of the DS Lite until the majority of the lower case has been separated from the upper case.

Step 6

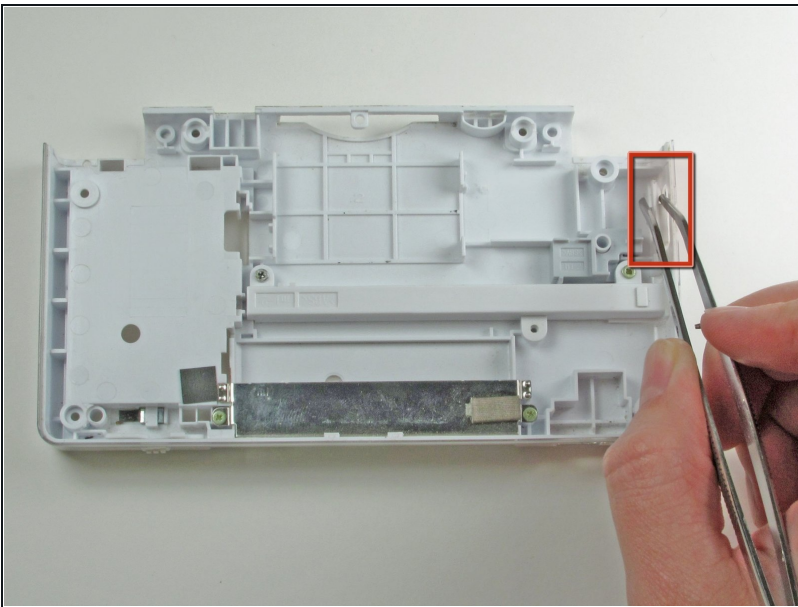


- Lift the lower case away from the rest of the DS Lite.

⚠ Pull carefully. Some units are sealed with adhesive, and pulling too hard can damage the power switch.

⚠ When re-assembling, make sure that power switch and volume sliders are properly aligned with the switches on the motherboard.

Step 7 — Power Switch



- Use a pair of [tweezers](#) to carefully remove the power switch.

To reassemble your device, follow these instructions in reverse order.