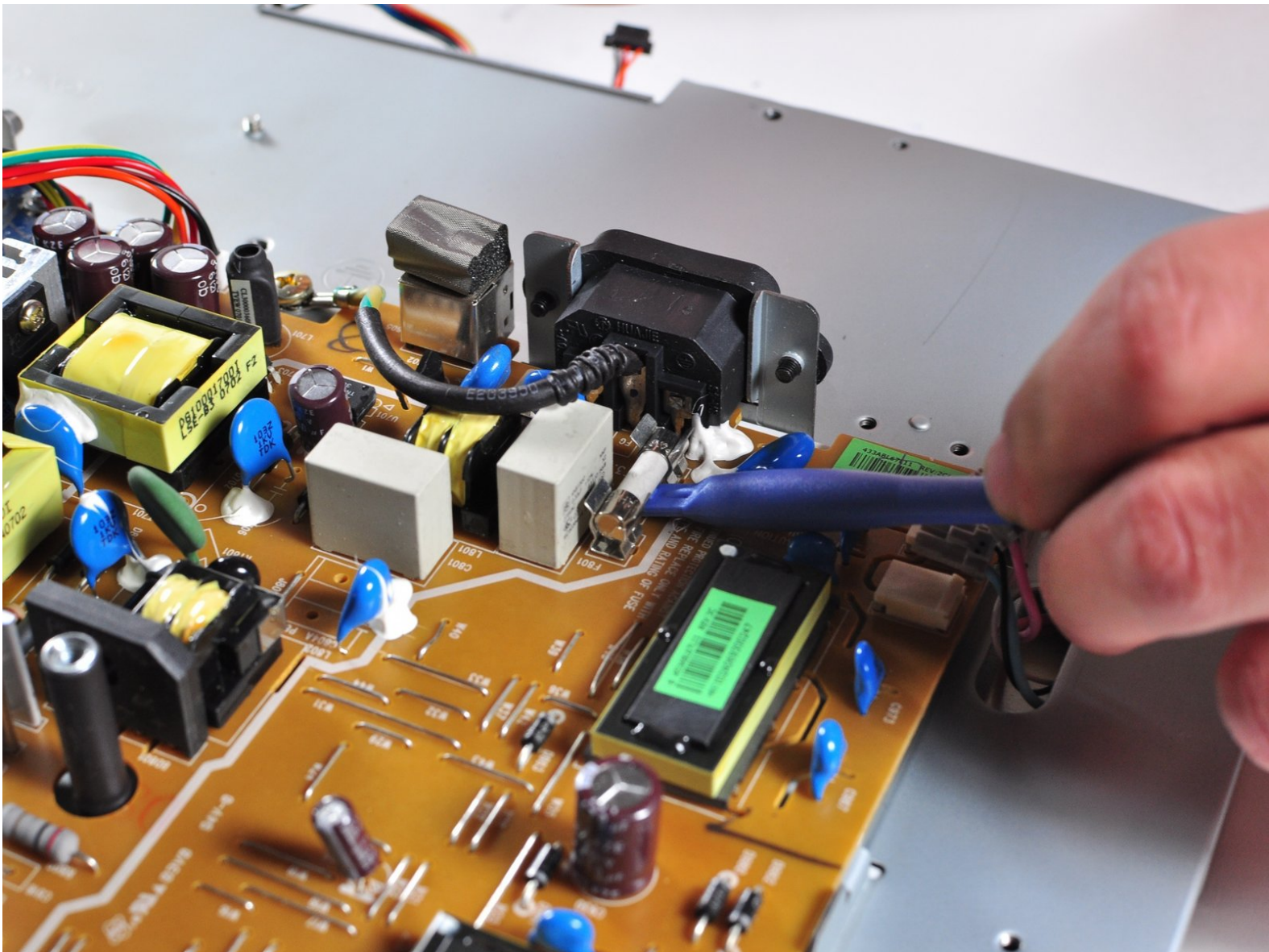




# NEC LCD1770NX Fuse Replacement

This guide describes the replacement of the power supply fuse for the NEC LCD1770NX.

Written By: Drew Troxell





## TOOLS:

- [Phillips #2 Screwdriver](#) (1)
  - [Phillips #000 Screwdriver](#) (1)
-

## Step 1 — Stand



- Place the monitor face down on a clean, flat surface.

## Step 2



- Firmly remove the back panel of the stand by pulling it up and away from the monitor.



### Step 3



- Unscrew the two 6mm Phillips PH2 screws to detach the stand enclosure from the stand.

### Step 4



- Firmly grasp the stand enclosure with your hand and slide it to base of stand.

## Step 5



- Unscrew the two 14.5mm Phillips PH2 screws holding the stand to the monitor.

## Step 6



- Lift the the stand straight up to remove it.



## Step 7 — Monitor Enclosure




- Place the monitor screen face up.
- Pull the frame off by placing your fingers on the inside of the frame and pulling out and up, the frame should snap off.
- Continue your way around the screen.

## Step 8

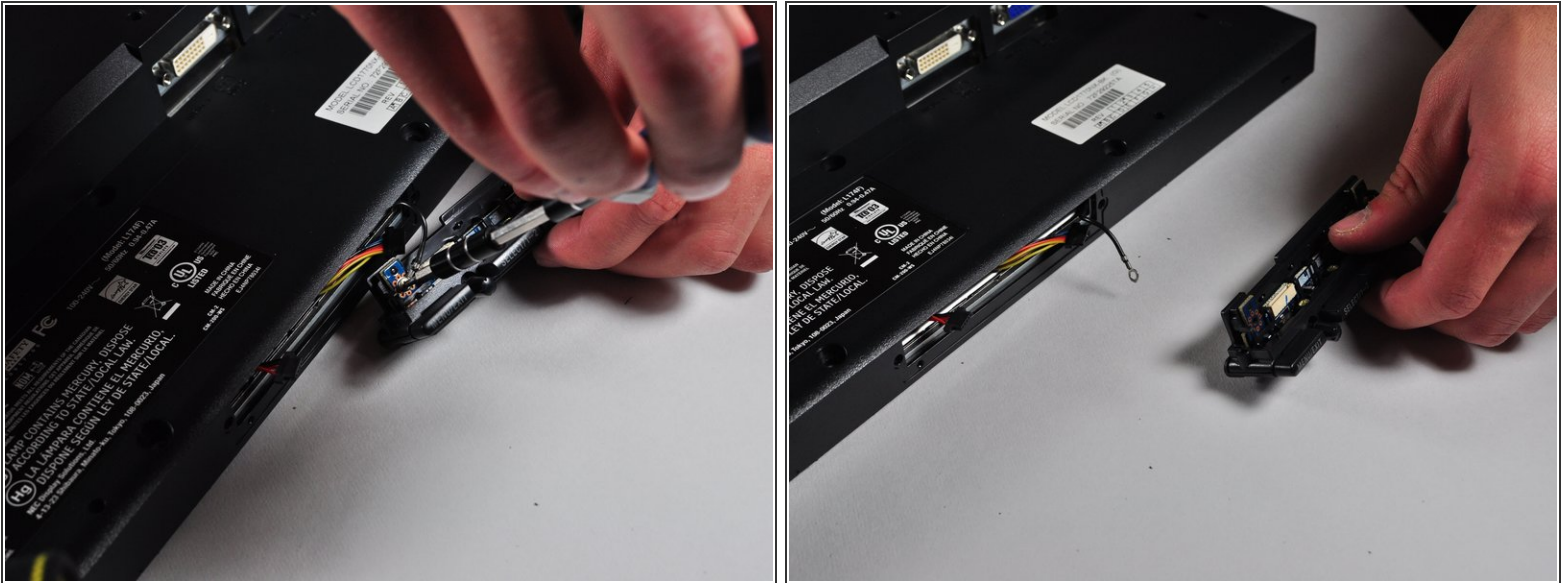


- Unscrew the two 7mm screws from the bottom of the button assembly.

 Do not pull the button assembly out too quickly or with too much force! Damage to the wires can occur.

- Pull the button assembly out a few inches and unplug the colored cables.

## Step 9



- Unscrew the gold colored 7mm Phillips PH000 screw holding the button assembly to the monitor.
- Remove the button assembly from the monitor.

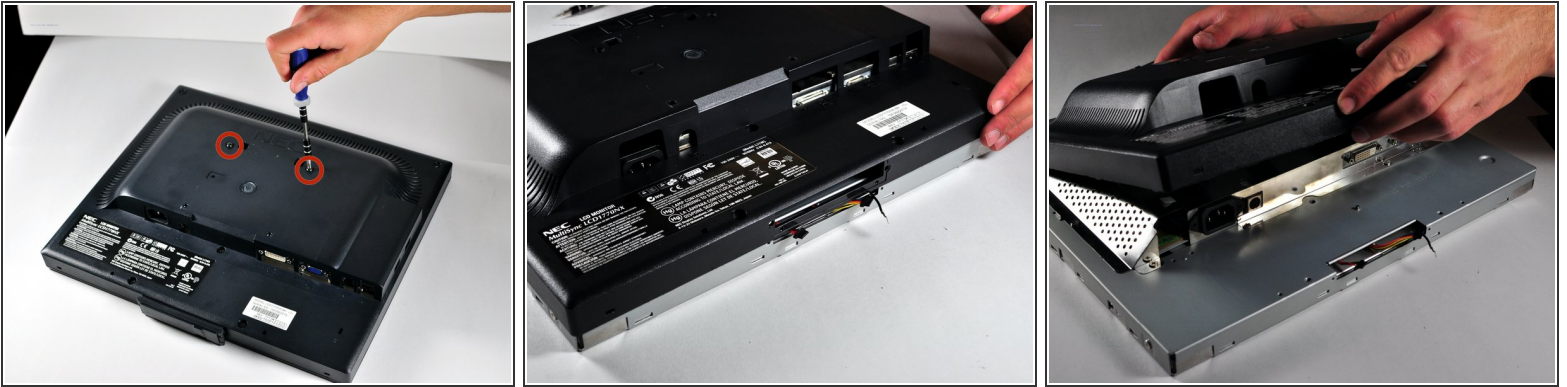
## Step 10



- With the monitor face-down, unscrew the 5 7mm Phillips PH2 screws around the outside of the enclosure.

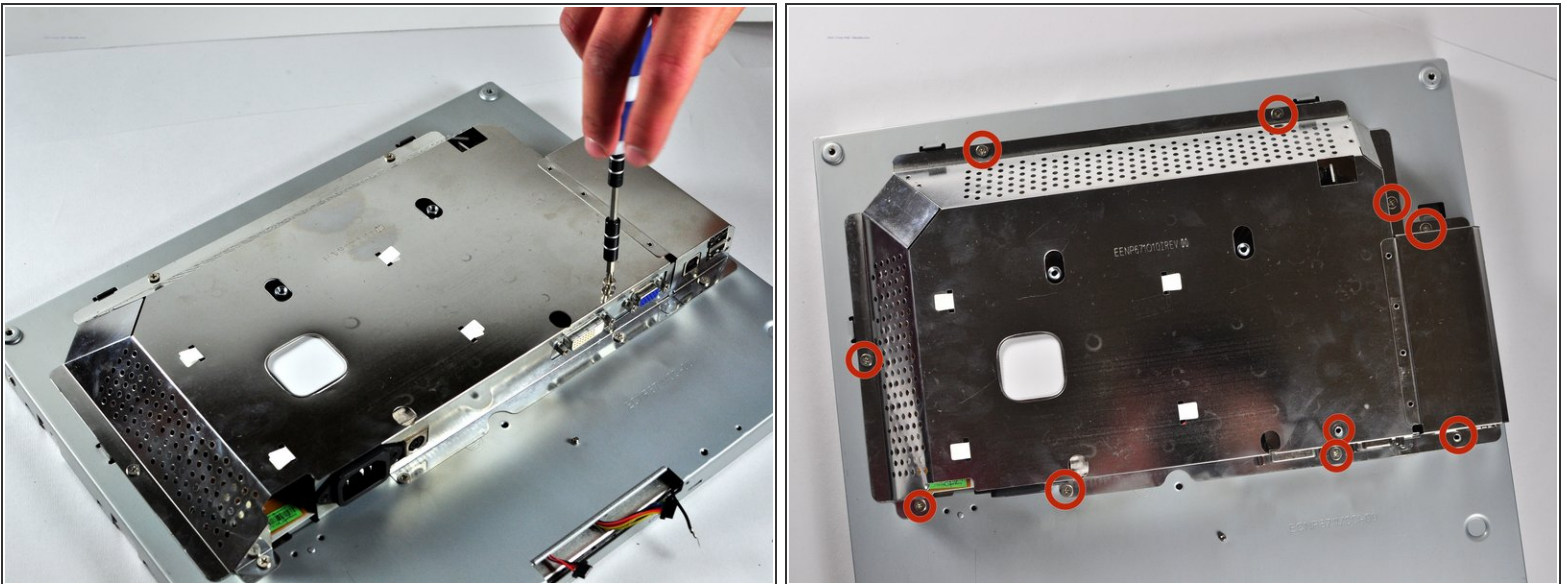


## Step 11



- Unscrew the 2 14.5mm Phillips PH2 screws located on the raised center of the enclosure.
- Carefully pull the enclosure off the monitor.

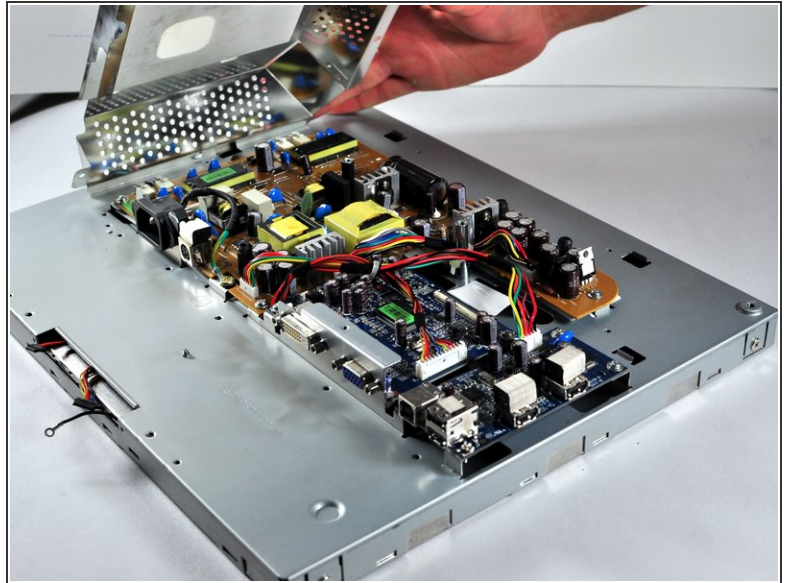
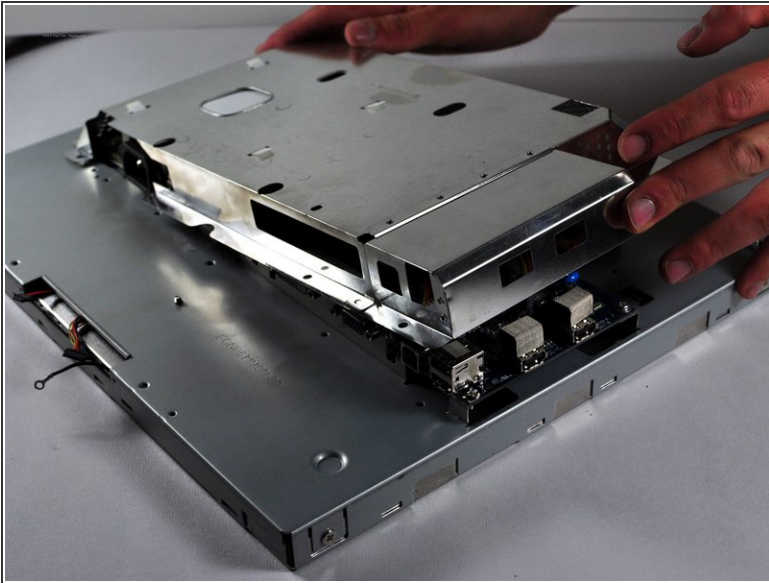
## Step 12



- Unscrew the 10 5mm Philips PH2 screws holding the metal casing to the monitor.

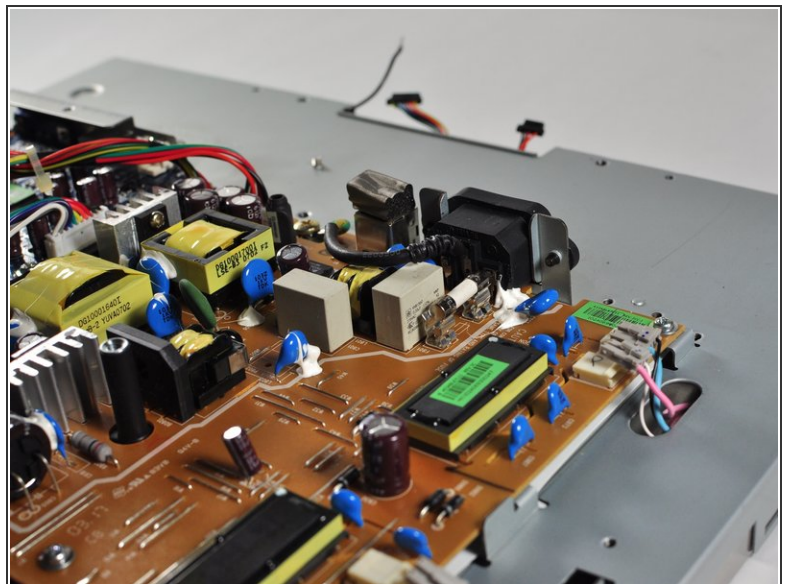
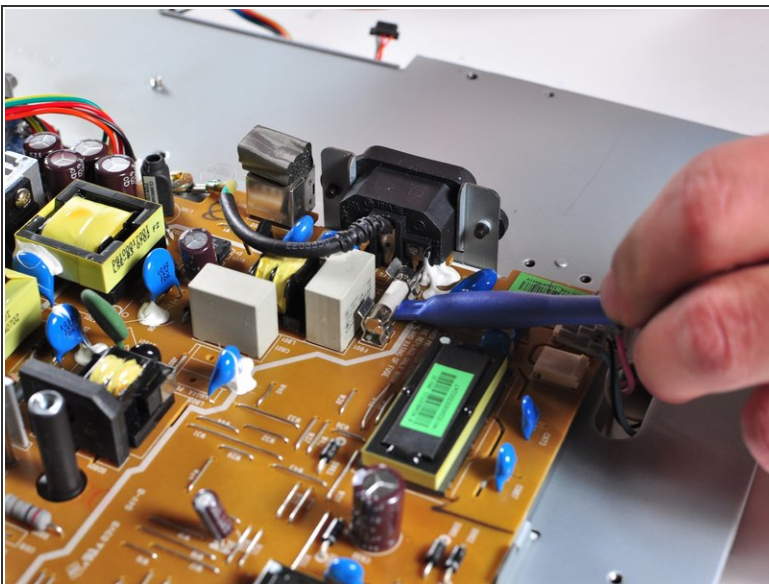


## Step 13



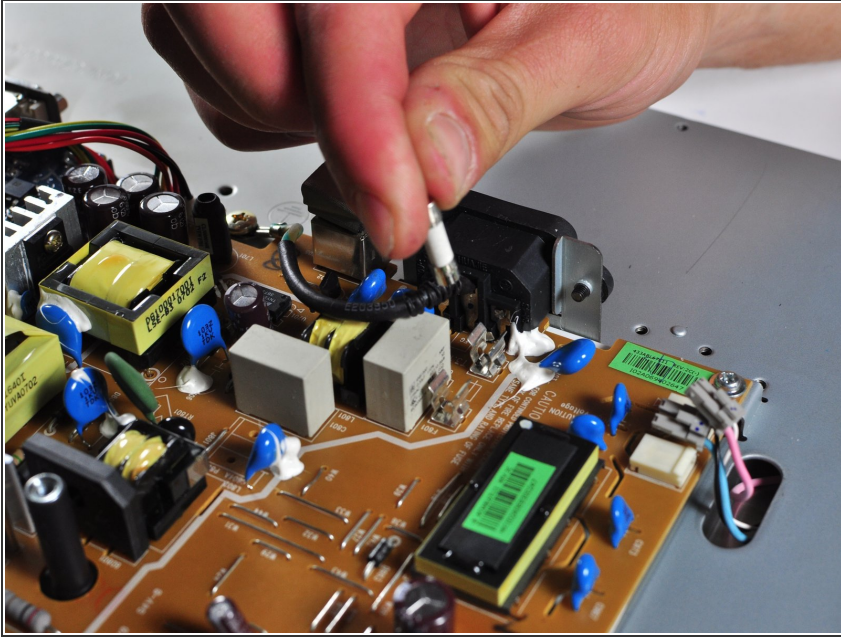
- Pull the the metal casing off of the monitor to reveal the motherboards.

## Step 14 — Fuse



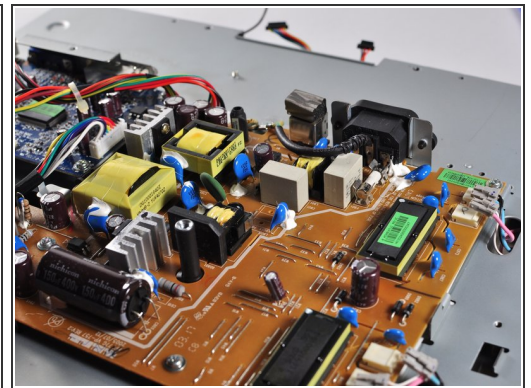
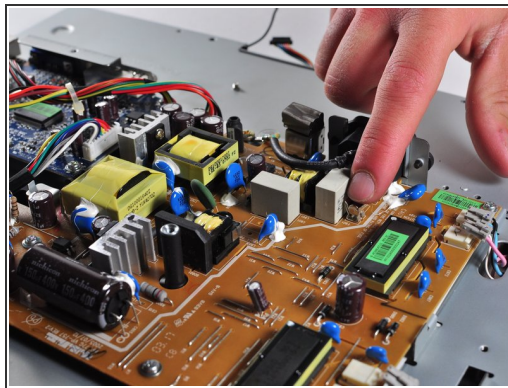
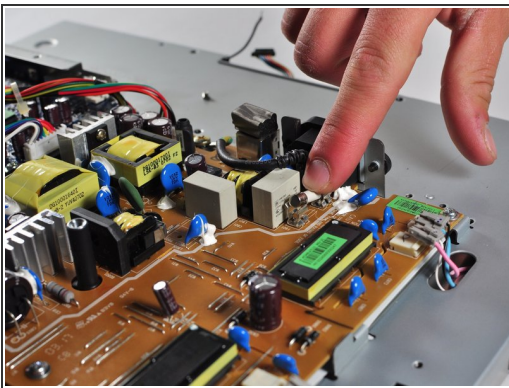
- Carefully insert the prying tool underneath the power supply fuse.
- Using the prying tool, lift the power supply fuse out of its emplacement until it is resting on its clamps.

## Step 15



- Carefully remove the power supply fuse by hand.

## Step 16



- Place the replacement power supply fuse on the fuse clips.
- With a finger, press down on the ends of the replacement fuse until it is properly seated in the fuse clips.

To reassemble your device, follow these instructions in reverse order.