



TI-84 Plus Silver Edition Motherboard and Screen Replacement

If nothing is working at all on your calculator...

Written By: Kale McKinney



INTRODUCTION

If nothing is working at all on your calculator and nothing you have tried has worked, you may need to replace the motherboard. If the screen is cracked or damaged, you will need to replace it. This guide will show you how to replace both the motherboard and the screen, because they are attached and cannot be easily separated.



TOOLS:

- [iFixit Opening Tool](#) (1)
 - [Phillips #00 Screwdriver](#) (1)
 - [T6 Torx Screwdriver](#) (1)
-

Step 1 — Faceplate



- Insert your index finger in the open slot below the keys.

⚠ Be careful to not bend the plate too much because it is very thin and might break.

- Apply a firm upward force until the bottom two tabs located near the bottom of the plate come off.

Step 2



- Grab the face plate on each side near the middle and apply a gentle upward force on each side until the middle tabs come off.

i A tab is located in the center of the face plate. If it is still attached, then continue to apply a gentle upward force until the center tab comes off.

- Lift the face plate upward until the top three tabs come off and the face plate is completely detached.

Step 3 — Main Battery



- Push firmly down on the tab located on the back of the calculator near the center.
- Pull the tab up, lifting it off of the calculator and exposing the batteries.

Step 4



⚠ Removing the AAAs and the back up battery will clear the calculator's memory. Make sure you have backed up any important data prior to performing this step.

- Push the positive (+) side of the batteries to remove them

Step 5 — Backup Battery



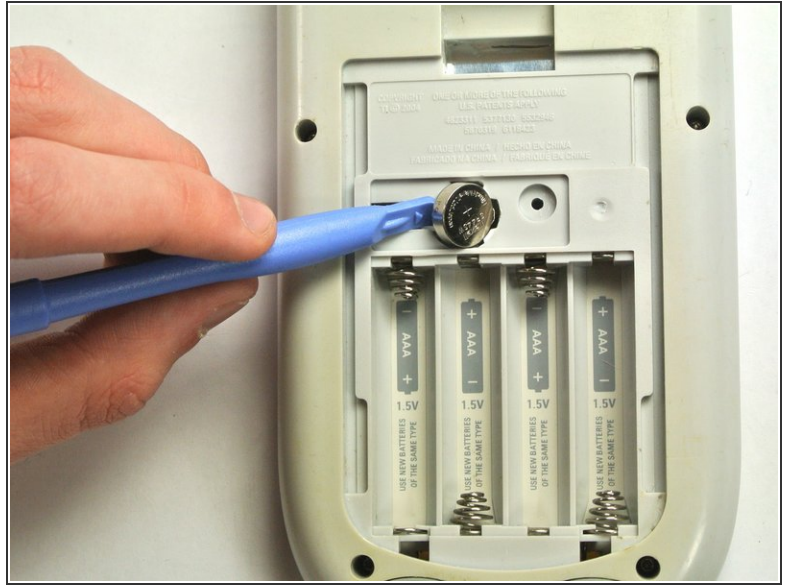
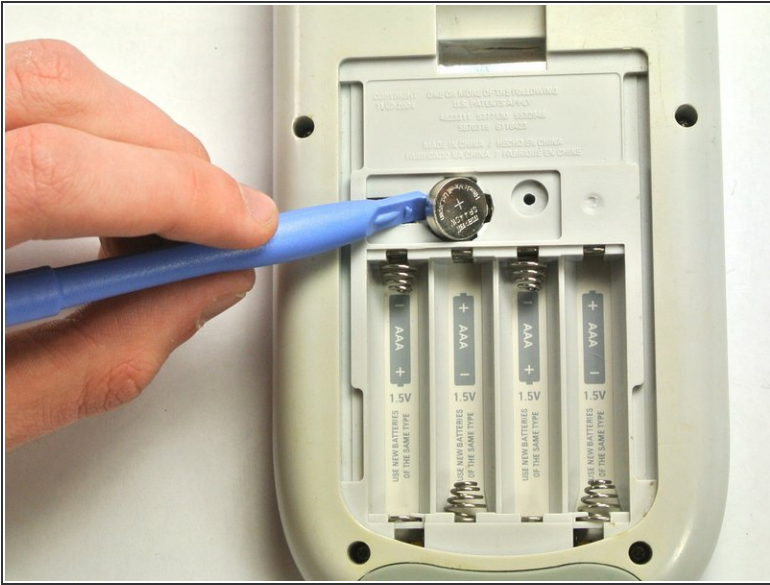
- Using the Phillips #00 Screwdriver, unscrew the 15 mm screw holding the backup battery cover, located above the main battery area.

Step 6



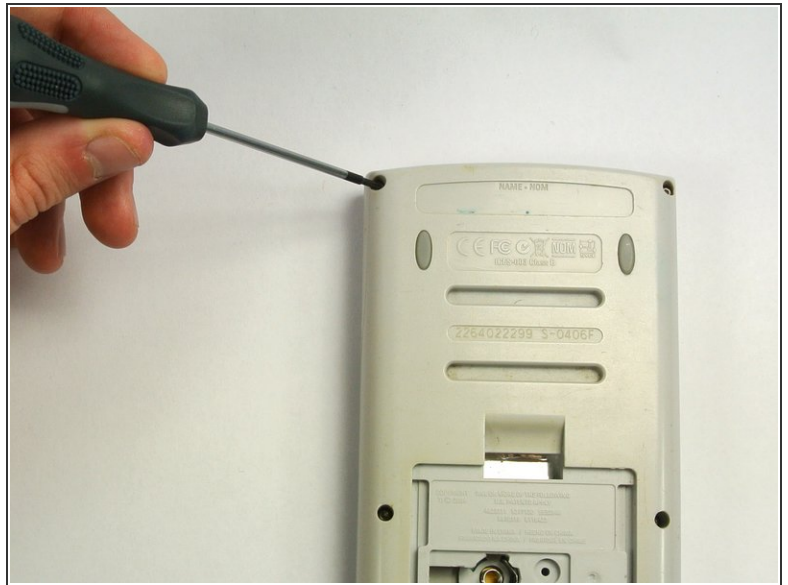
- Grab the plate and lift gently upward, to remove the backup battery cover.

Step 7



- Wedge the small plastic opening tool under the backup battery in the gap to the left of the backup battery.
- ⓘ The backup battery is an SR44SW coin cell battery. You can also replace it with a size 357/303 or LR44 battery.
- Push gently downward until the backup battery pops out.

Step 8 — Motherboard and Screen



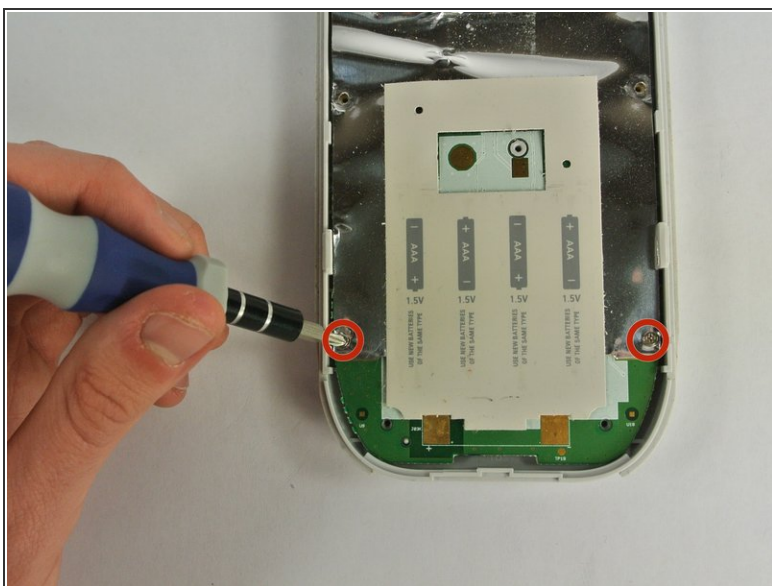
- Unscrew the six 8.5 mm screws located on the perimeter of the back cover using the Precision T6 Torx Screwdriver.

Step 9



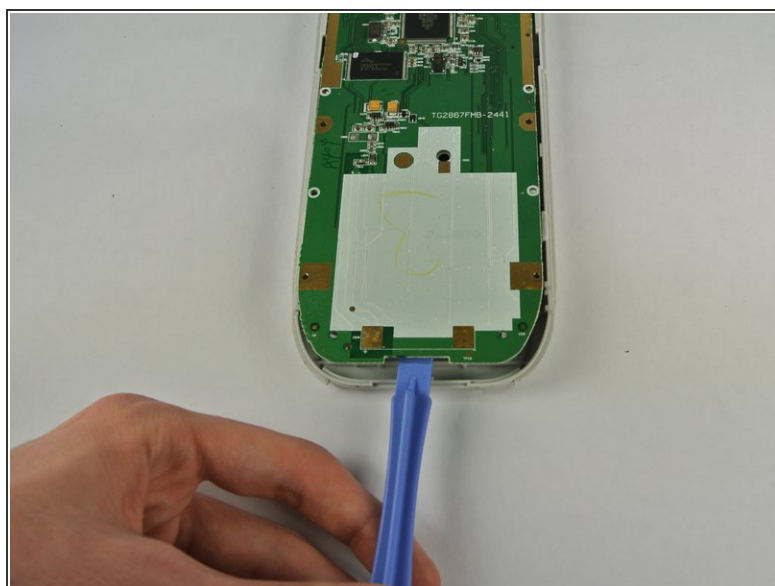
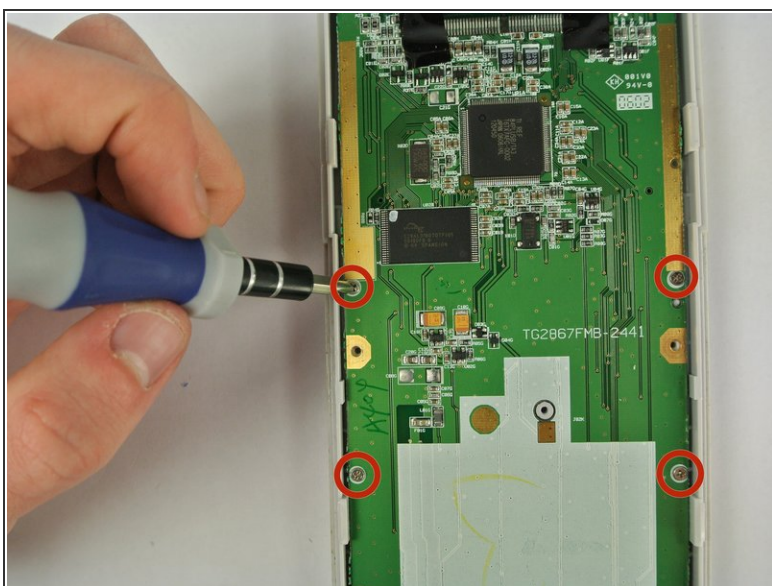
- Wedge the large plastic opening tool in the gap at the bottom between the top and bottom covers.
- Apply a gentle downward force to separate the top cover from the bottom cover.
- Wedge the large plastic opening tool in the gaps along each side to unhook the side clips.
- ⓘ There are clips located at the bottom of the calculator, on the sides of the calculator (both near the bottom and near the top), and at the top of the calculator.
- Pull the bottom cover apart from the top cover.

Step 10



- Unscrew the two 5 mm screws at the bottom of the silver sheet using the Phillips #00 Screwdriver.
- Pull up on the silver sheet from the top to remove it from the calculator.

Step 11



- Unscrew the four 5 mm screws on the sides of the mother board Phillips #00 Screwdriver.
- Pry the motherboard out from the bottom of the front casing using the large plastic opening tool.

To reassemble your device, follow these instructions in reverse order.