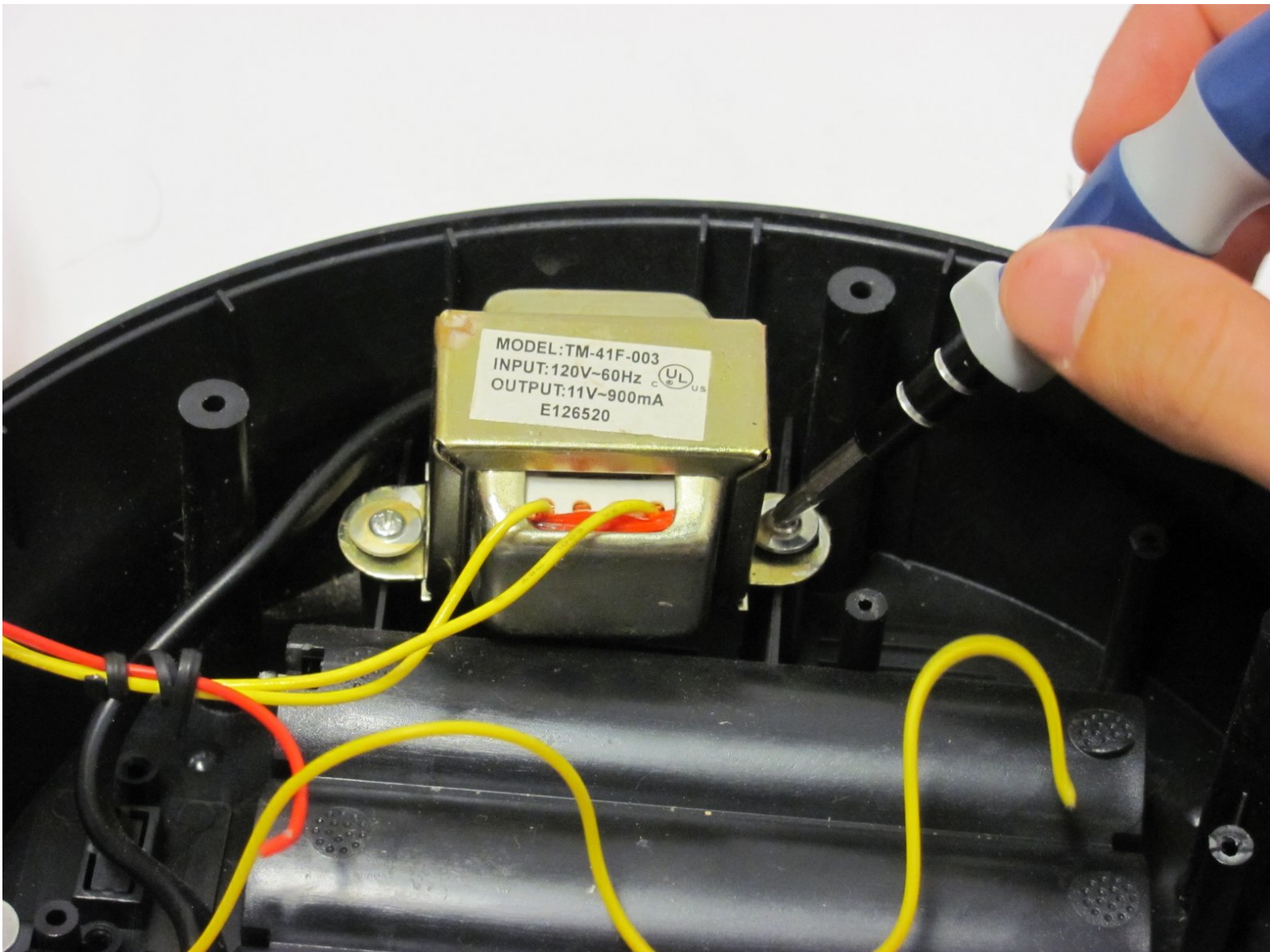




# Insignia NS-B2110 Transformer Replacement

Replace the transformer to get that power cord working again.

Written By: Jacob Phillips



## INTRODUCTION

Follow these instructions to remove and replace the transformer in your boombox. This requires some simple soldering, so make sure you have a soldering iron handy and know how to use it. An easy step-by-step guide to soldering can be found [here](#).



### TOOLS:

- [Phillips #00 Screwdriver](#) (1)
  - [Spudger](#) (1)
  - [Essential Electronics Toolkit](#) (1)
  - [Phillips #2 Screwdriver](#) (1)
  - [Soldering Iron](#) (1)
  - [Utility Scissors](#) (1)
-

## Step 1 — Battery



- Flip the stereo so the CD opening is face down.
- With two fingers, pinch the tabs and lift up to open the battery protection cover.

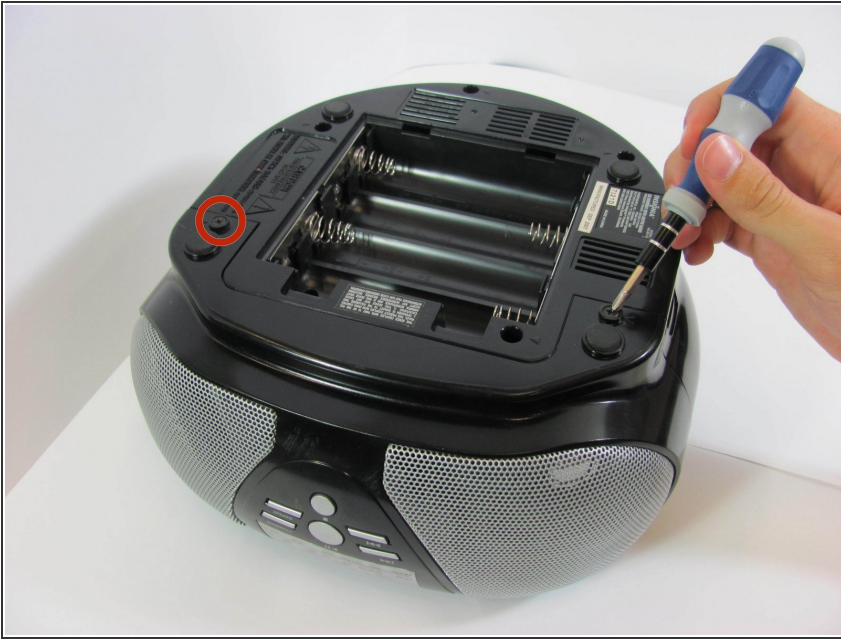
## Step 2



- Using a spudger or your fingers, push up against the positive end of the battery. Once it is loose, lift the battery out.
- Repeat until all eight batteries are removed.
- ☑ Make sure the batteries are facing the right direction. If the device does not turn on, you may have the batteries in the opposite orientation.



### Step 3 — Bottom Panel



- With a Phillips #2 screwdriver, remove two 2mm screws.

### Step 4



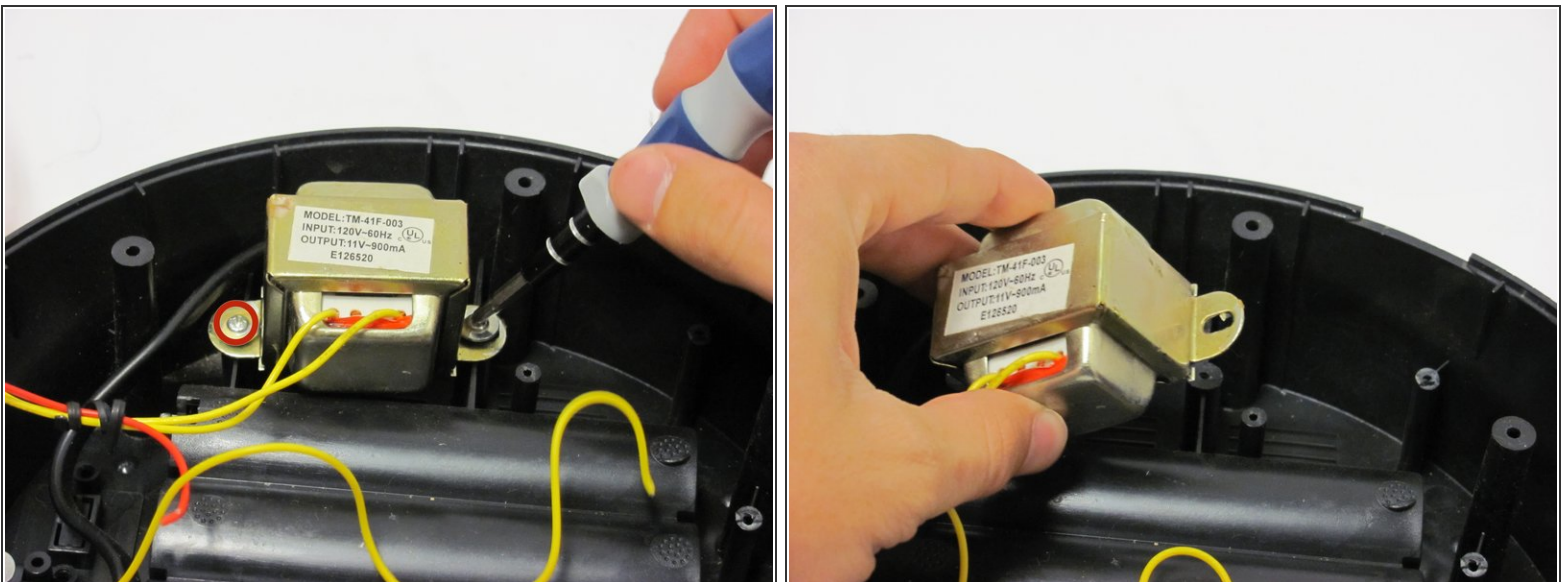
- Using a long Phillips #2 screwdriver, remove one 6mm screw located inside the battery compartment.
- Use the same screwdriver to remove four more 6mm screws along the outside of the case.

## Step 5



- With a plastic opening tool, wedge the bottom shell from the main speaker face along the edge.
- ⚠ The bottom cover has two red and two yellow wires attached to it that you don't want to pull off. Handle the casing carefully.
- Once the pieces are separated, pull them apart and place the bottom cover aside, near the stereo.

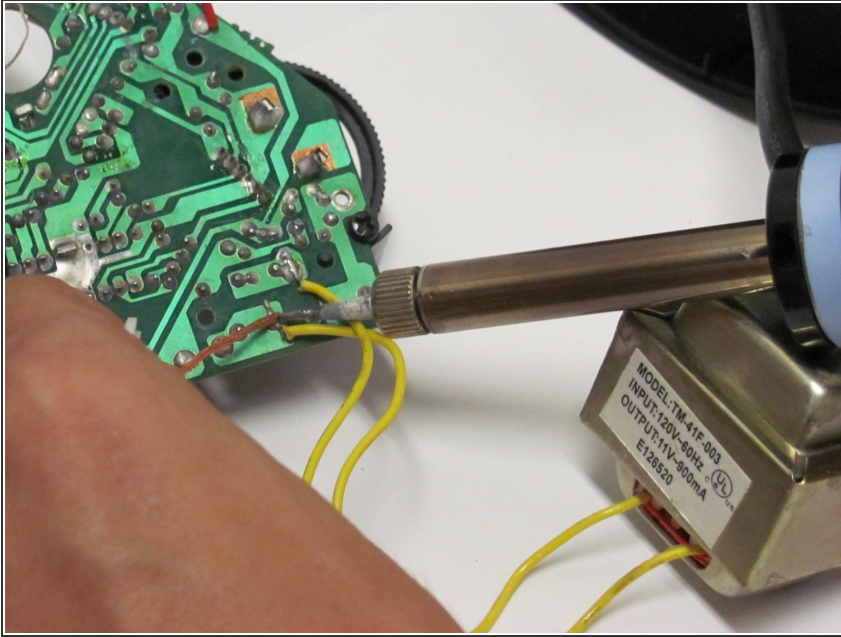
## Step 6 — Transformer



- Using a Phillips #2 screwdriver, remove two 4mm screws from the transformer box.
- Remove the transformer and set it to the side.

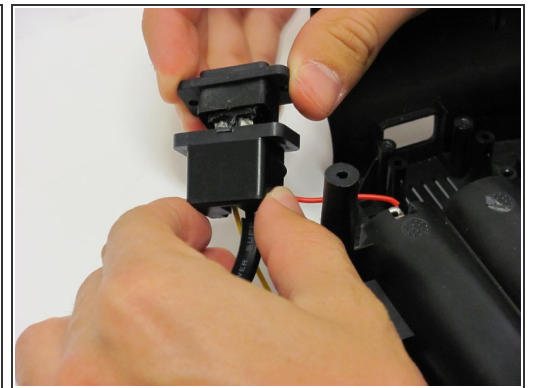
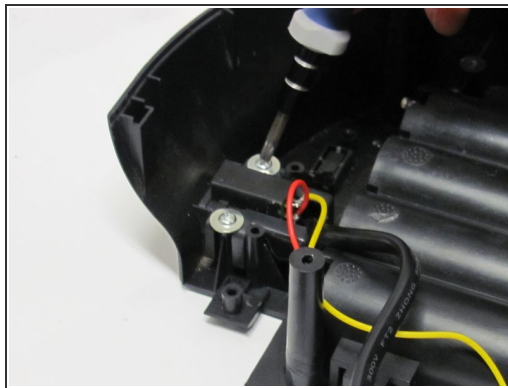
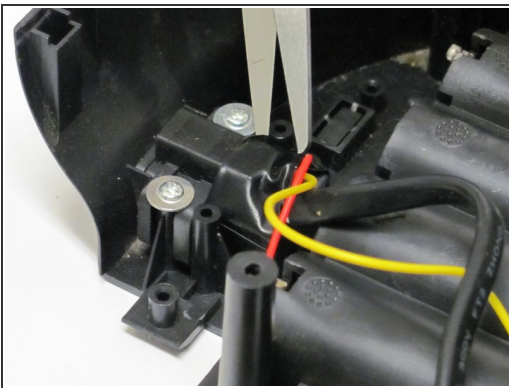


## Step 7



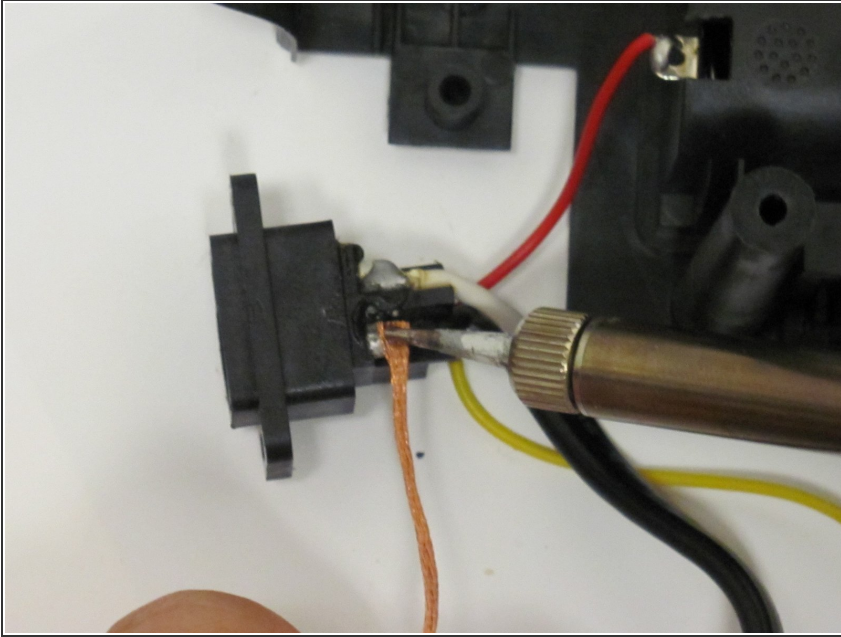
- Remove the solder connecting the two yellow wires to the green quarter-circle board.

## Step 8



- There will be a strip of electrical tape securing the converter. Use scissors to carefully remove this tape.
- Use a Phillips #2 screwdriver to remove two 4mm screws from the converter.
- Remove the converter. There will be a plastic casing that slides off; set this aside.

## Step 9



- Remove the solder from the red and yellow wires on the converter.

To reassemble your device, follow these instructions in reverse order.