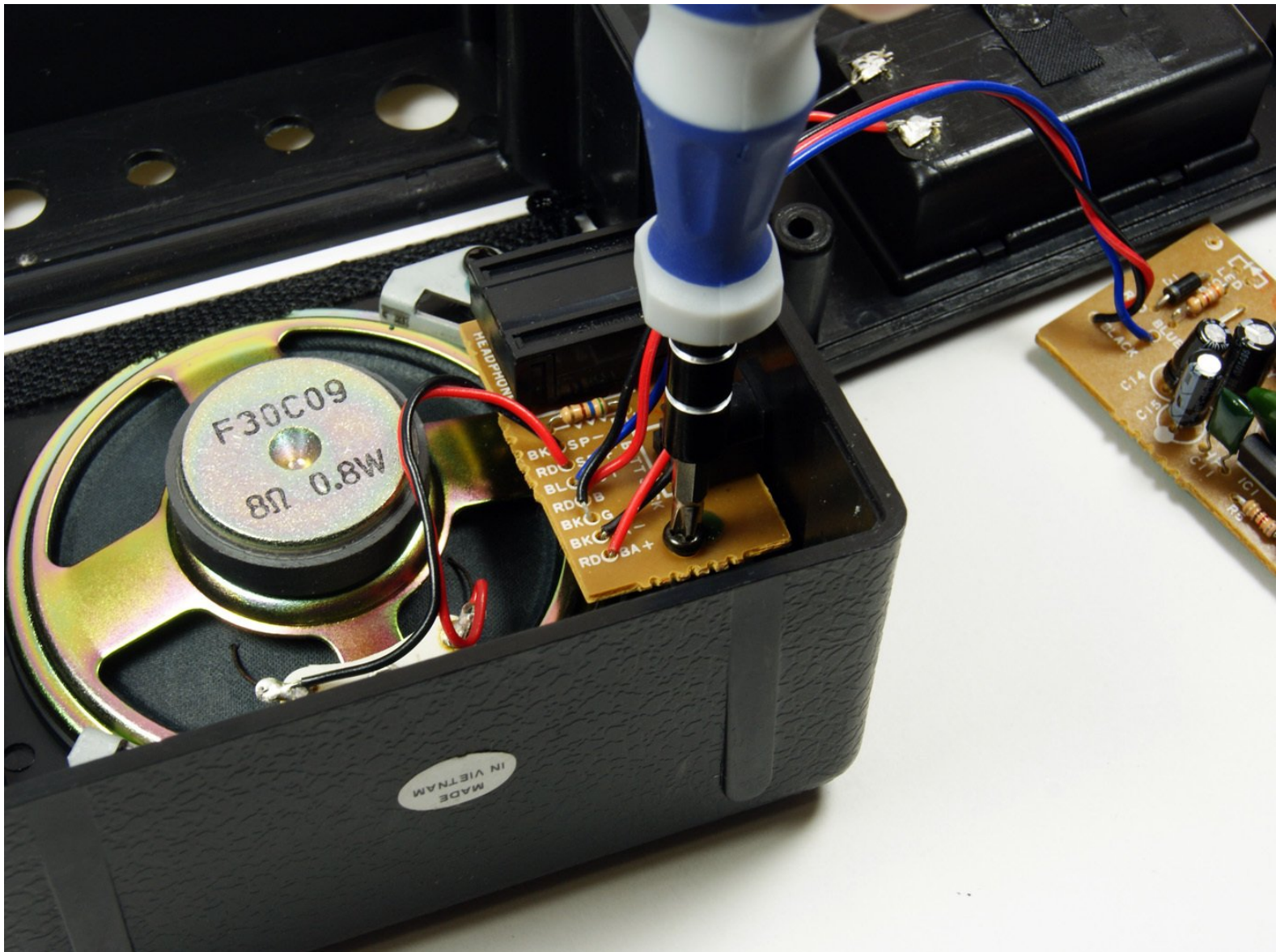




Disassembling Marshall MS-2 Partner Circuit Board

This guide will show you how to remove the partner circuit board.

Written By: MacKinley





TOOLS:

- [Phillips #000 Screwdriver](#) (1)
-

Step 1 — Disassembling Marshall MS-2 Micro Amp Case Disassembly



- First be sure to turn the power switch to the off position.
- Do this by turning the leftmost knob counter-clockwise as until the line points to "off."

Step 2



- Now remove the battery.
- On the back of the device locate the battery cover.
- Remove it by pushing down on the clip.
- Then pull the piece of fabric until the battery comes out.

Step 3



- Use the long, skinny phillips head screwdriver to remove the 4 7/16" screws on the back of the device in the four corners.
- ⓘ Once unscrewed, do not try to take each screw out. Move to next step once all screws have been unscrewed.

Step 4



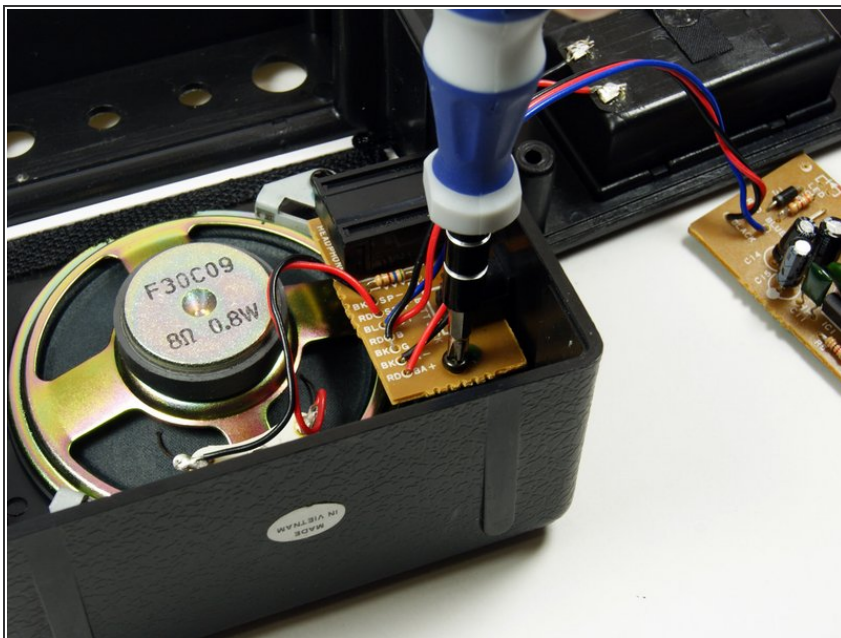
- Now pull the back panel off and place it down as shown. Pull the panel straight up so you do not lose the screws.

Step 5 — Partner Circuit Board



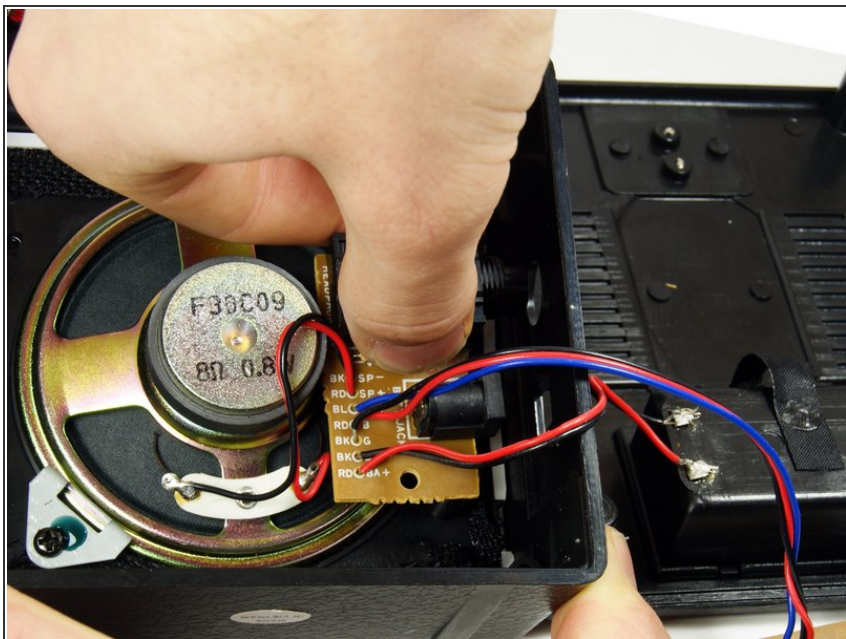
- Use a 9/16" socket to remove the nut around the headphone jack. Be careful to not lose the washer.

Step 6



- Remove the 7/16" phillips head screw.

Step 7



- Grab the headphone jack from inside the case and pull it toward the speaker until you can fully remove it from the device.

To reassemble your device, follow these instructions in reverse order.