



iPhone 3GS Front Panel Assembly Replacement

The front panel assembly, including the...

Written By: Ben Eisenman



INTRODUCTION

[video: <http://www.youtube.com/watch?v=9foQGx-ULow>]

The front panel assembly, including the digitizer, ear speaker, and home button, can be replaced on the iPhone 3GS.

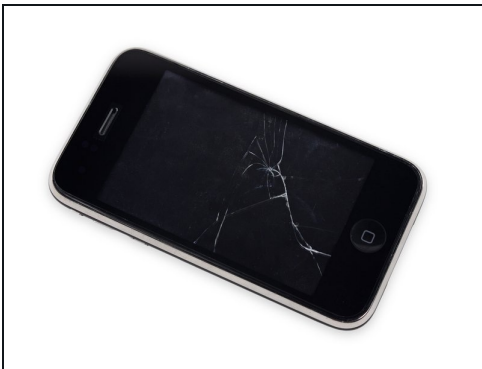
TOOLS:

[Metal Spudger](#) (1)
[Phillips #00 Screwdriver](#) (1)
[Suction Handle](#) (1)
[Spudger](#) (1)

PARTS:

[iPhone 3GS Front Panel](#) (1)

Step 1 — Broken Glass



- If your display glass is cracked, keep further breakage contained and prevent bodily harm during your repair by taping the glass.
- Lay overlapping strips of clear packing tape over the iPhone's display until the whole face is covered.
 - ⓘ This will keep glass shards contained and provide structural integrity when prying and lifting the display.

 **Wear safety glasses to protect your eyes from any glass shaken free during the repair.**

Step 2 — Display



- Remove the two Phillips #00 screws from the dock-connector end of the iPhone.
- ⓘ Make sure to keep all the screws organized as you are taking the phone apart. They are different sizes.

Step 3



- Remove the metal handle from the suction cup. It's easier and safer to grip the suction cup's base instead of the metal handle.

⚠ Be very careful when opening the iPhone so that the cables under the display are not severed.

- ⓘ There is a rubber gasket between the silver front bezel and black display assembly. A bit of force is required in this step to separate the iPhone's display assembly.
- Use a small suction cup near the Home button to gently pull up the lower portion of the iPhone's display assembly.
- ⓘ If the display assembly is too damaged to allow the suction cup to adhere, tape with a strong adhesive such as duct tape may be used.

Step 4



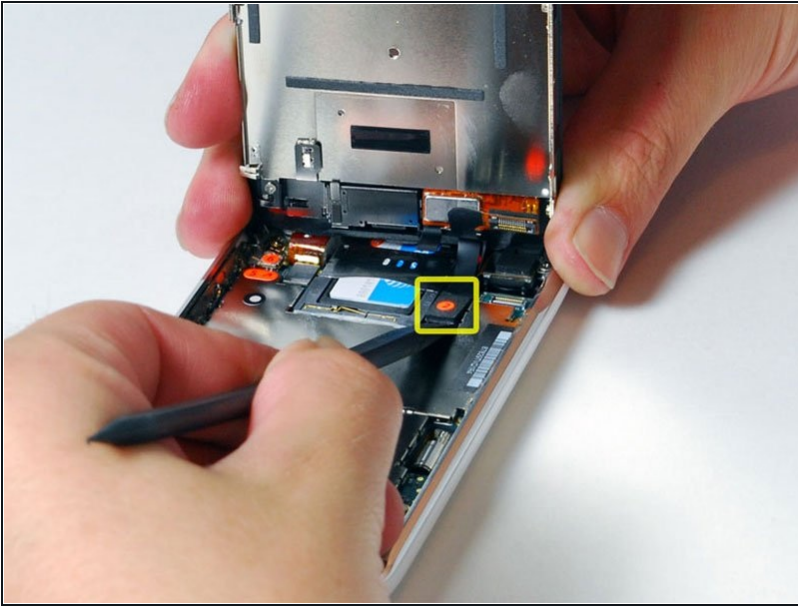
- ① The display assembly is still connected to the iPhone by several cables, so don't try to remove it entirely just yet.
- Rotate the display assembly up until it is at an angle of approximately 45 degrees.

Step 5



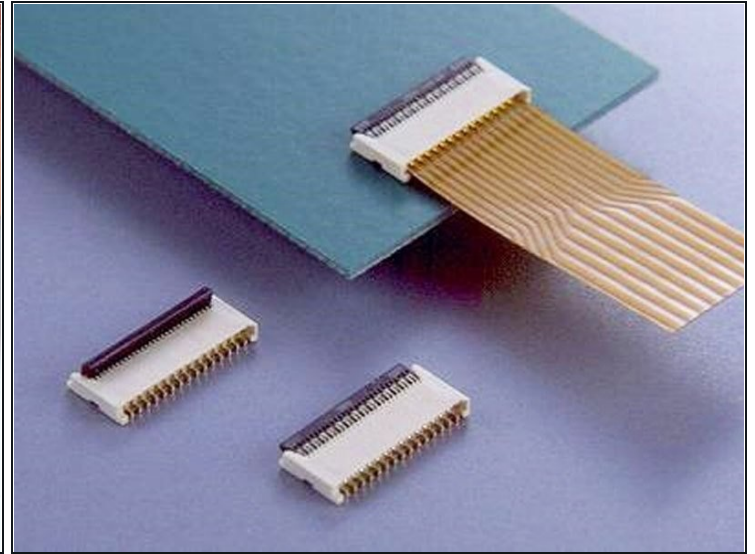
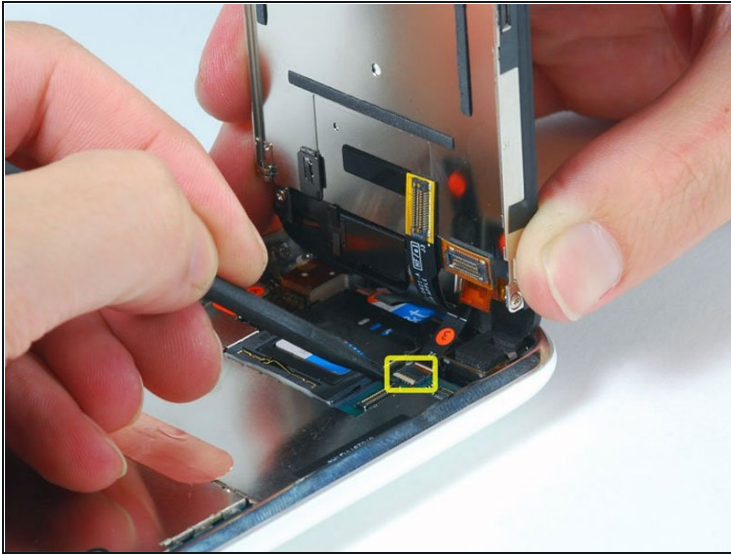
- Continue to hold the display assembly with one hand, and use your other hand and a spudger to disconnect the black ribbon cable labeled "1."
- Ribbon cable "1" is connected with a plug style connector. The block at the end of the cable is the plug which is simply pushed into a socket on the circuit board. No other locking mechanism is used.

Step 6



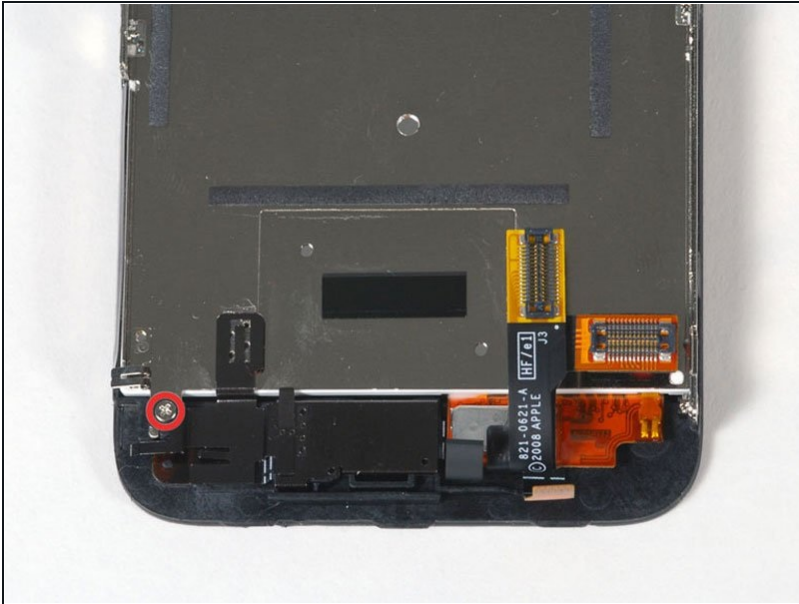
- Rotate the display assembly up until it is roughly vertical. This will allow easier access for disconnecting the remaining cables.
- Use a spudger to disconnect the black ribbon cable labeled "2."

Step 7



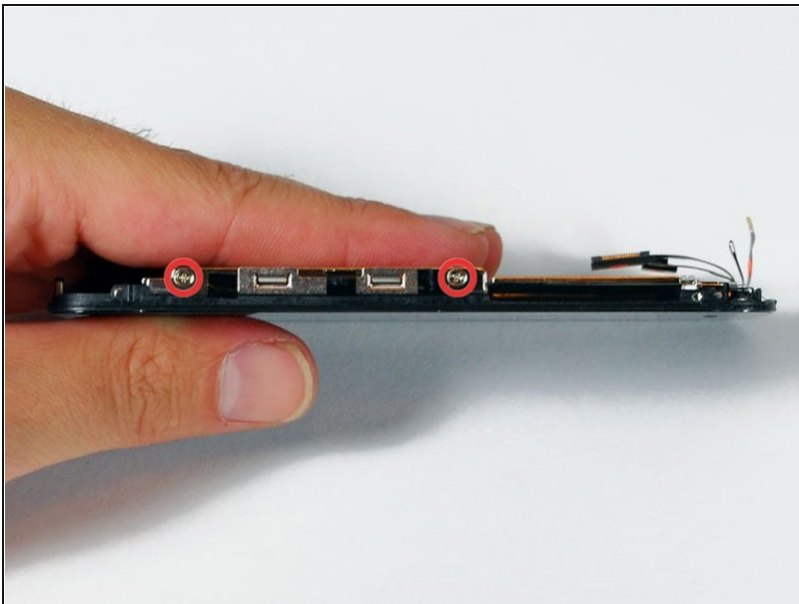
- ⚠️ Ribbon cable "3" is held in place by a FPC style connector. You must unlock this connector before sliding the ribbon cable out. The locking mechanism is on the opposite side of where the cable is inserted - it swivels upwards 90 degrees. Use a plastic spudger to lift the locking mechanism.
- ⓘ The FPC locking latch is very delicate and is typically a different color than the body of the connector. (see the detail image of FPC connector open and closed)
- Slide the ribbon cable out of the connector, and remove the display assembly from the iPhone.
 - ⓘ It's impossible to properly reinsert a ribbon into an FPC connector unless the lock is disengaged. Make sure the locking latch is open when attaching/detaching the cable.

Step 8



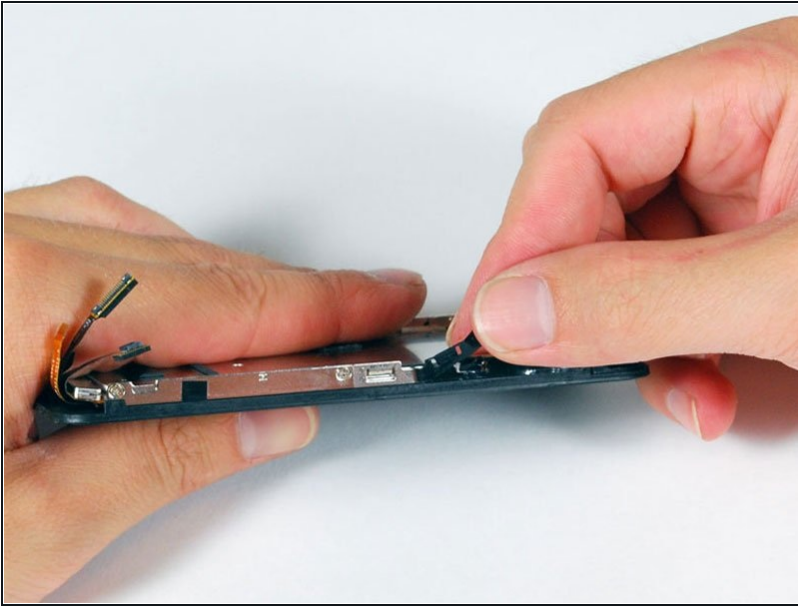
- Remove the single Phillips #00 screw from the corner of the display assembly.

Step 9



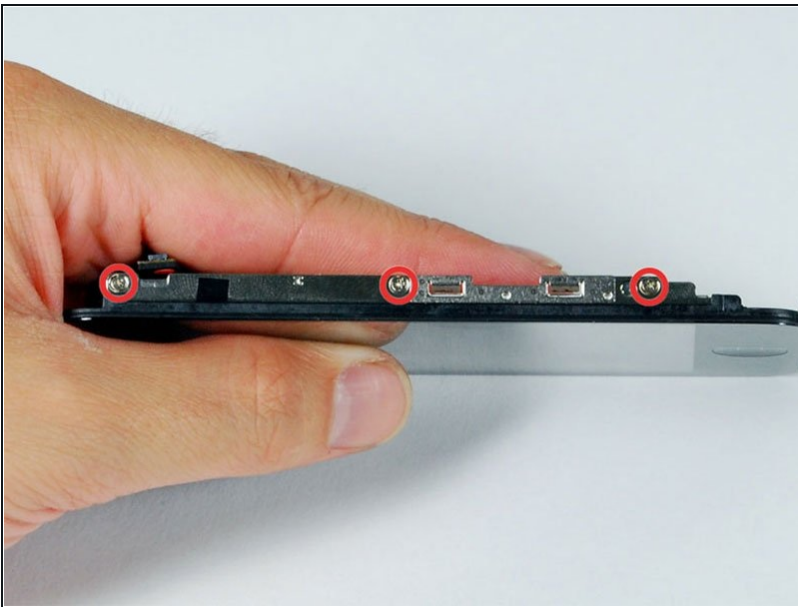
- Remove the two Phillips #00 screws from the right side of the display assembly.

Step 10



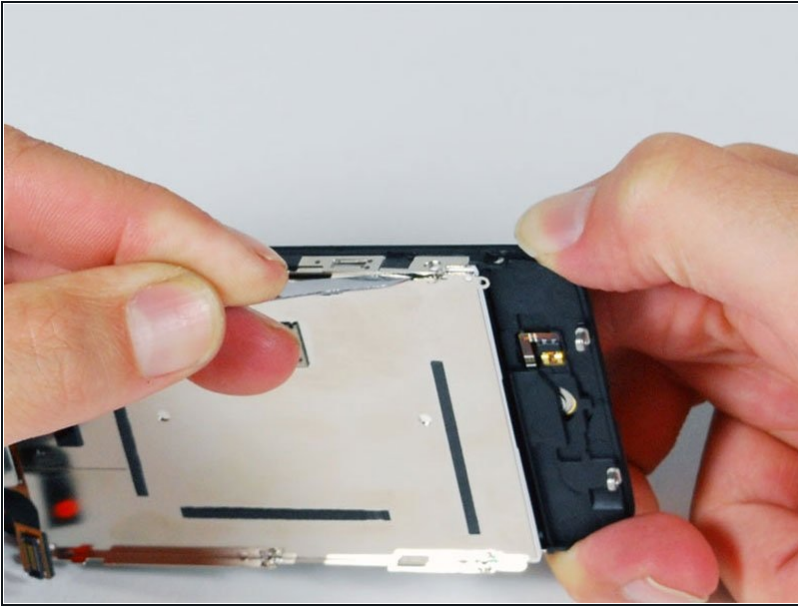
- Turn the display around, and if there is a thin strip of black tape on the edge of the display assembly, carefully peel it up.
- ① Keeping the tape from sticking to itself can be tricky. We recommend placing the tape on a wax-coated piece of paper (any sticker backing will do).

Step 11



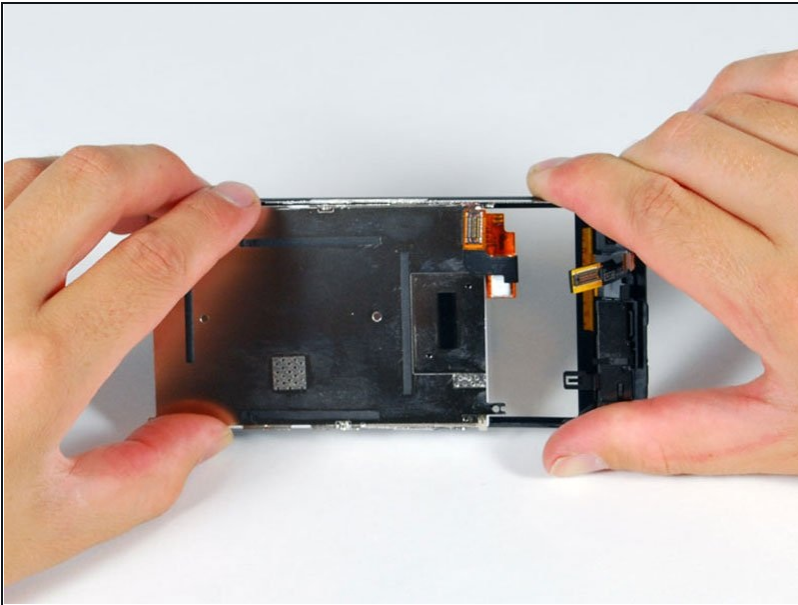
- Remove the three Phillips #00 screws from the left side of the display assembly.

Step 12



- Turn the display assembly over and again carefully insert a metal spudger between the two metal rails along the edge of the display assembly. Gently rotate the spudger to lift the LCD up from the glass.

Step 13



- Separate the LCD and glass by sliding the LCD panel away from the ribbon cables on the glass.

Step 14 — Front Panel Assembly



- Front Panel Assembly remains.
-