



# Nokia 3360 Logic Board Replacement

Written By: Kirk Gonzalez



---

## INTRODUCTION

This guide shows how to replace the logic board.

---

### TOOLS:

- [Spudger](#) (1)
  - [T6 Torx Screwdriver](#) (1)
-

## Step 1 — Battery



- Press down on the back of the phone with your thumb. Then slide the back plate upward toward the top of the phone.
- Lift the back plate off the phone.

## Step 2



- To release the battery, press the two tabs that are located directly above the battery towards the top of the phone at the same time.

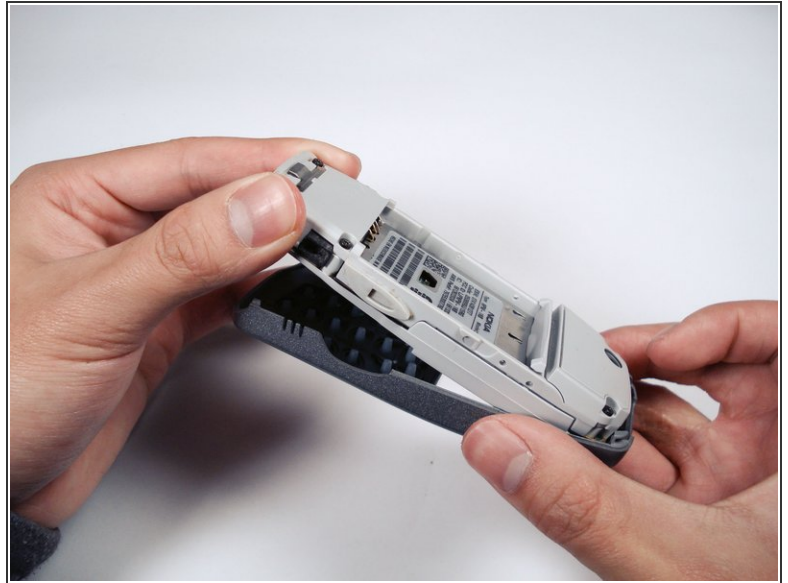


## Step 3



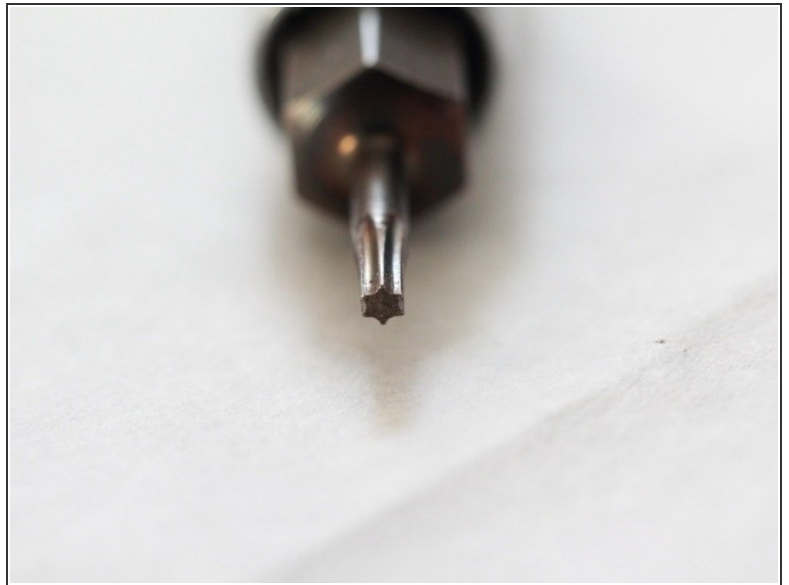
- Lift the battery out of the phone.
- ☞ Note: Upon reassembly of the phone refer to second picture. The bottom of the battery with three square openings should line up with the prongs sticking out of the phone.

## Step 4 — Charger Connector



- Use a pry tool towards the bottom of the phone to gently detach the face plate from the dark grey phone frame.
- Hold phone frame down while separating the face plate.
- Separate the faceplate and grey phone frame.

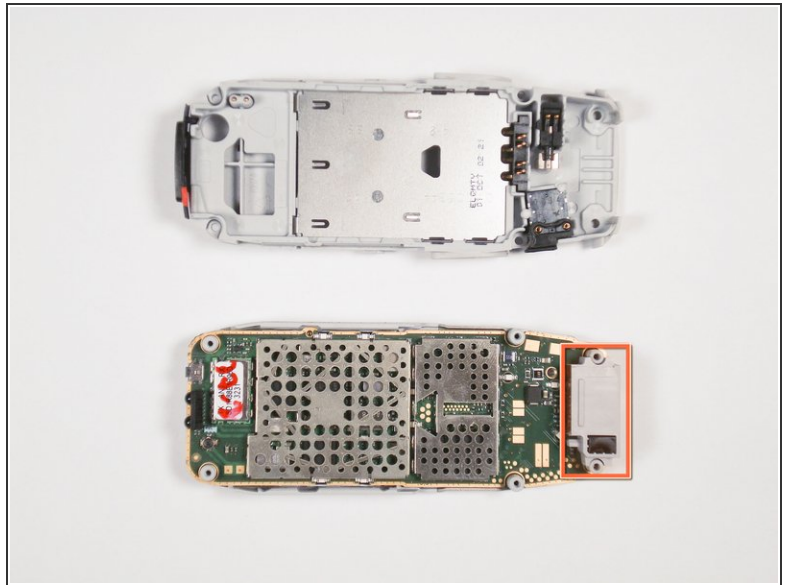
## Step 5



- Remove the six screws using a T6 screwdriver. (refer to second picture to help identify T6 screwdriver head).

☞ NOTE: When reassembling the device be sure to not over tighten the screws.

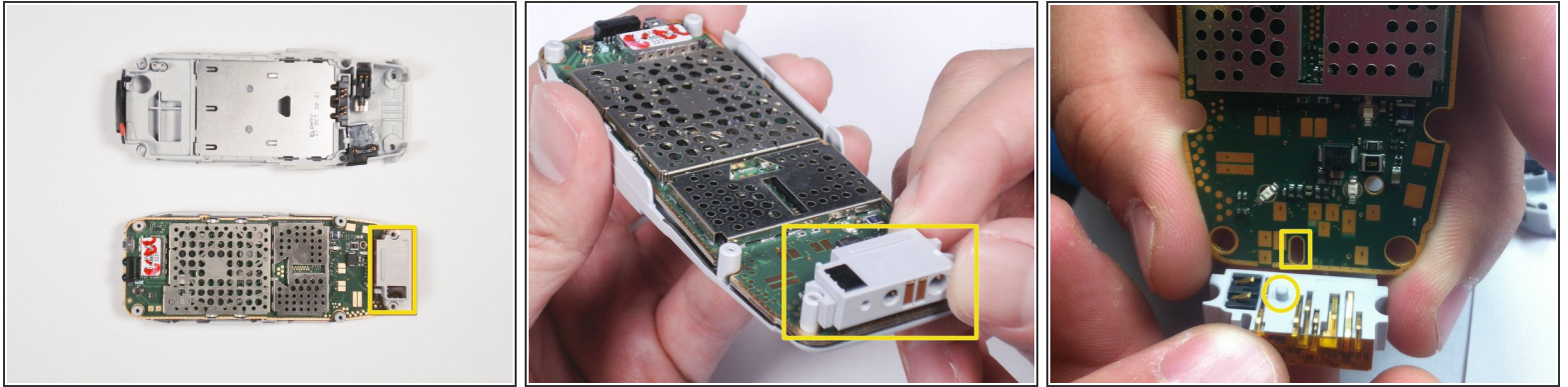
## Step 6



- Place the phone with the screen facing down onto a flat surface.
- Place the flat edge of the pry tool into the seam on the side, just above the screen. (refer to picture on where to place pry tool).
- Push the pry tool into the seam.
- Pry apart the plates until the cover separates from the rest of the phone. Be careful not to apply too much pressure
- Proceed to pull the front cover away from the rest of the phone. (refer to second picture for results) The marking foreshadows what we will be using in the next step.



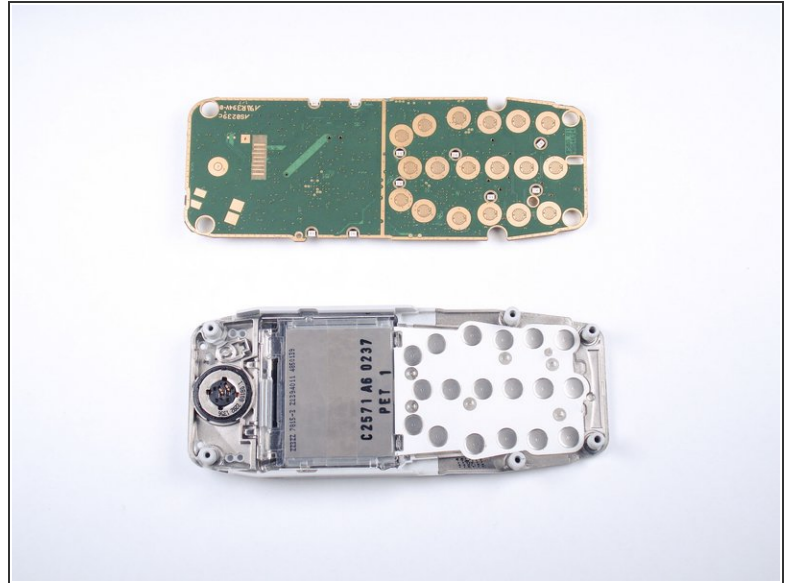
## Step 7



- Locate the charger connector. (refer to picture with marker)
  - Carefully lift the charger connector upward to detach.
- NOTE:** When reassembling this device the charger connector is placed toward the bottom of the phone. The connector has a peg sticking out that fits into the logic board. (refer to third picture)



## Step 8 — Logic Board



- Once the charger connector is pulled out, proceed with removing the logic board.
- To remove the logic board, grip the four corners of the logic board and lift from the front inner case.
- ⓘ Notice the second picture the logic board has been turned over with the button side facing up.
- 📌 Note: Upon reassembly the logic board must be placed correctly. The button side with the various circles should face down, lining up with the circular holes on the inner case.

To reassemble your device, follow these instructions in reverse order.