



# Nikon L310 Camera LCD Broken Replacement

How to disassemble the back cover and replace a broken LCD. The outer window has been replaced and manufactured by me with plastic.

Written By: Jaime



---

## INTRODUCTION

How to disassemble the back cover and replace a broken LCD. The outer window has been replaced and manufactured by me with plastic.



### TOOLS:

- [Pro Tech Toolkit](#) (1)
-

## Step 1 — LCD Broken



- Here we have the Nikon L310 with the LCD and outer window broken. First of all, I start to remove the screws, but be careful, because they have different lenght.

## Step 2



- First, we will remove the screws from the bottom side. These only 3. Remember the sizes!
- Then, the 2 screws of the Right side
- And finally, the screw above the USB port, on the Left side.



### Step 3



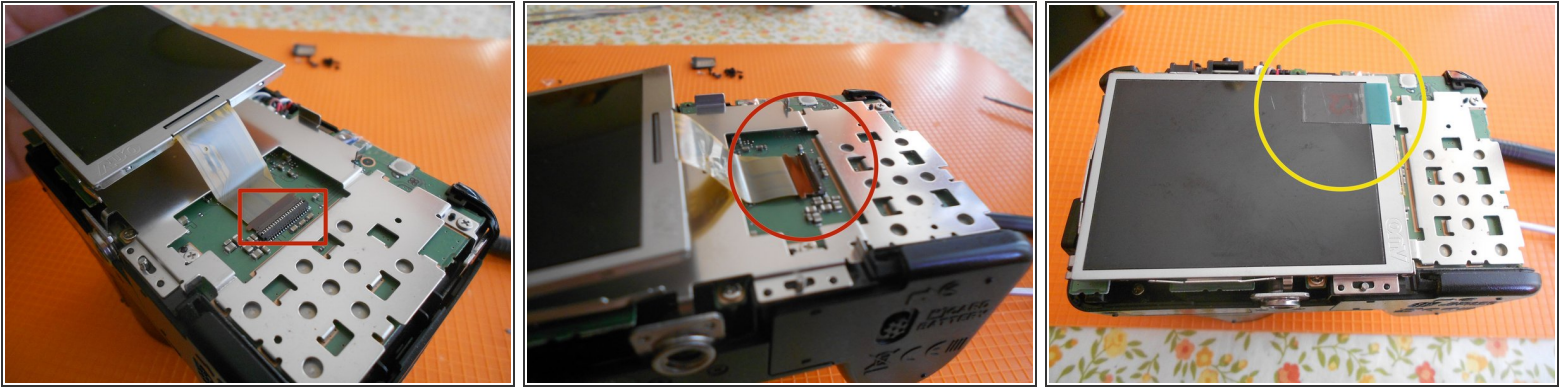
- Now, its time to open the flash, and remove the screw that is allocated inside.
- Remove the protector, and you will find a silver screw. Remove it.

### Step 4



- Now, you can separate the rear plastic frame, carefully.
- As you can see, the entire plastic frame comes out.
- And here it is, the display!

## Step 5



- Lift carefully the LCD module, and you will see that is connected by a FPC connector.
- Release the tab, and unplug the flex cable.
- Insert the new flex cable and install the LCD on its frame.
- DONT forget to remove the protective film from the NEW LCD!!

## Step 6



- Re-assembly all the parts, and put back the screws. The reparation is DONE! Here you can see the display fixed and the outer window replaced by methacrylate part made by myself ( I have one Dremel... )

To reassemble your device, follow these instructions in reverse order.