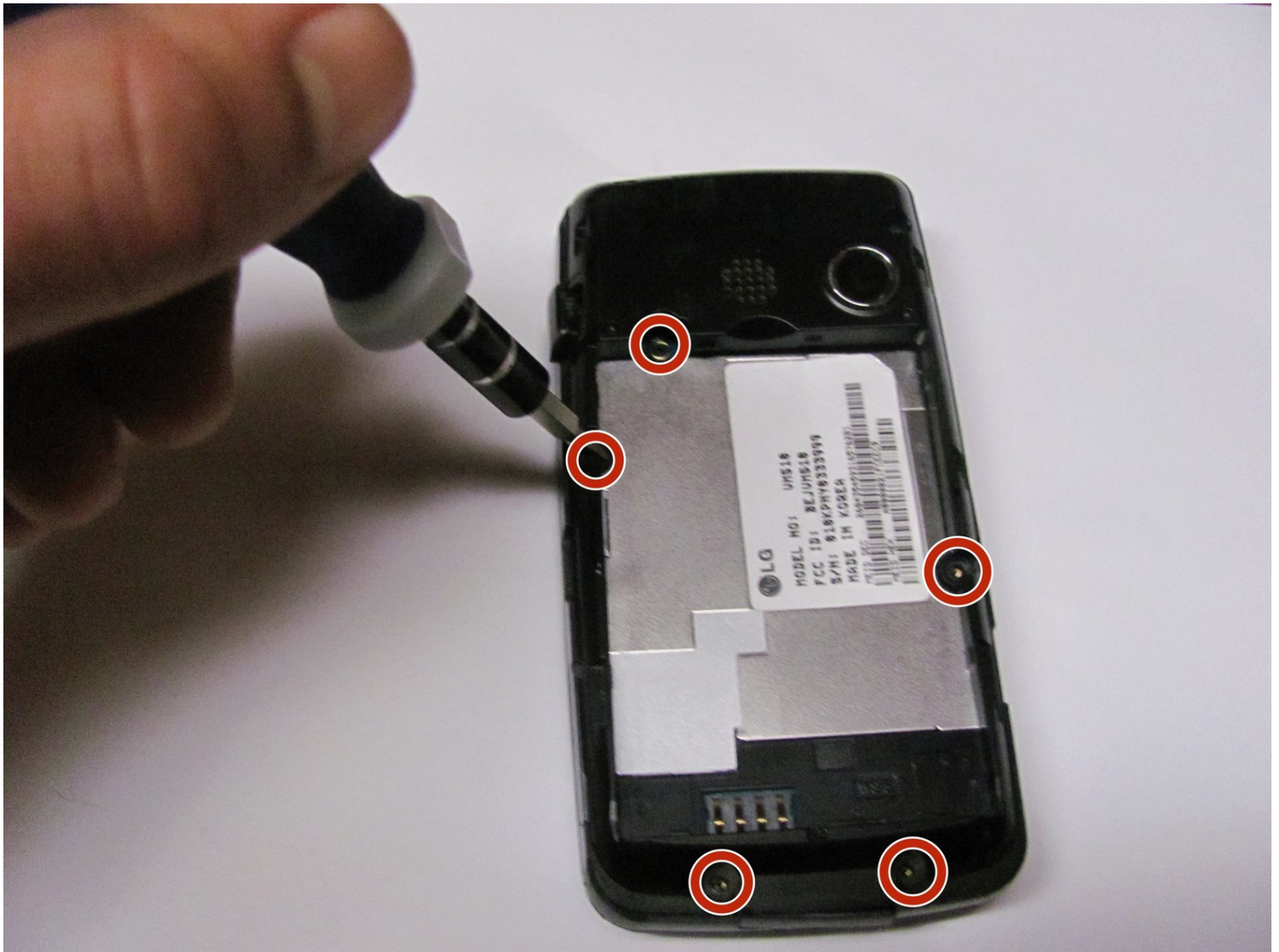




# LG Rumor Touch Inner Shell Replacement

Written By: blake chan lemley





## TOOLS:

Spudger (1)

Phillips #1 Screwdriver (1)

---

### Step 1 — Battery



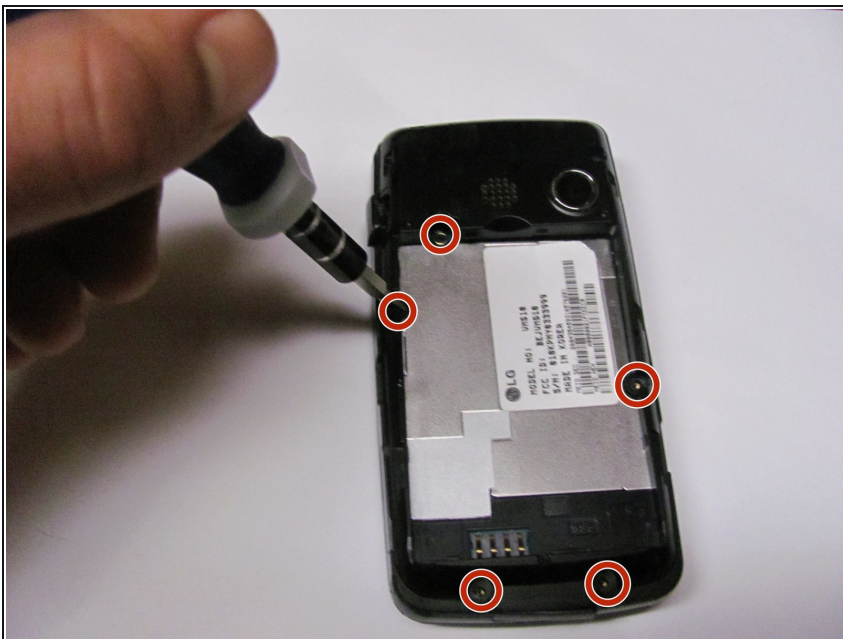
- Remove the phone's back cover by placing your thumb the above charging port, located at the bottom of the phone, and sliding the back cover upward.

## Step 2



- Gently pry the battery out of the phone with the spudger.

## Step 3 — Inner Shell



- Unscrew the 5 #1 5mm screws.



## Step 4



- Lift the inner shell from the phone.

---

To reassemble your device, follow these instructions in reverse order.