



Imation Superdisk USB Drive Metal Casing Replacement

Written By: Ryan





TOOLS:

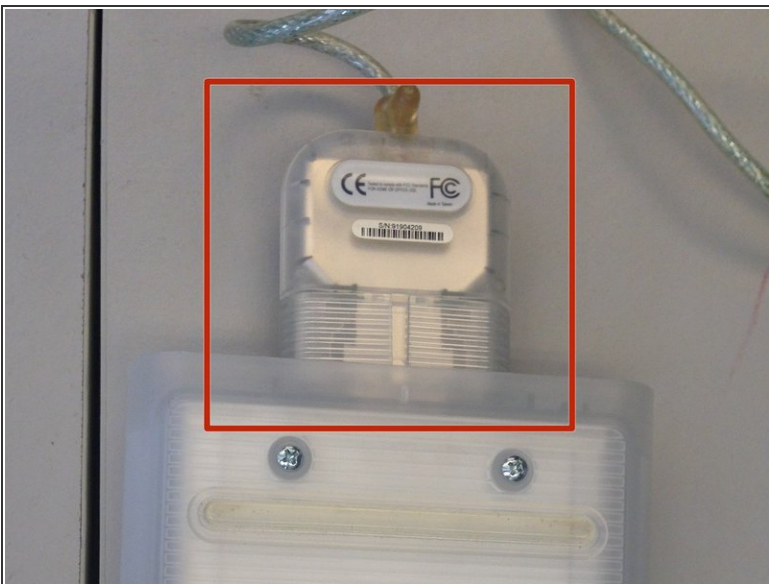
- [Fingers](#) (1)
-

Step 1 — Plastic Housing



- Flip the device over so the bottom is facing up.
- You will know it is the bottom because there will be six silver screws visible.

Step 2



- Remove the USB converter device by gently pulling it out.

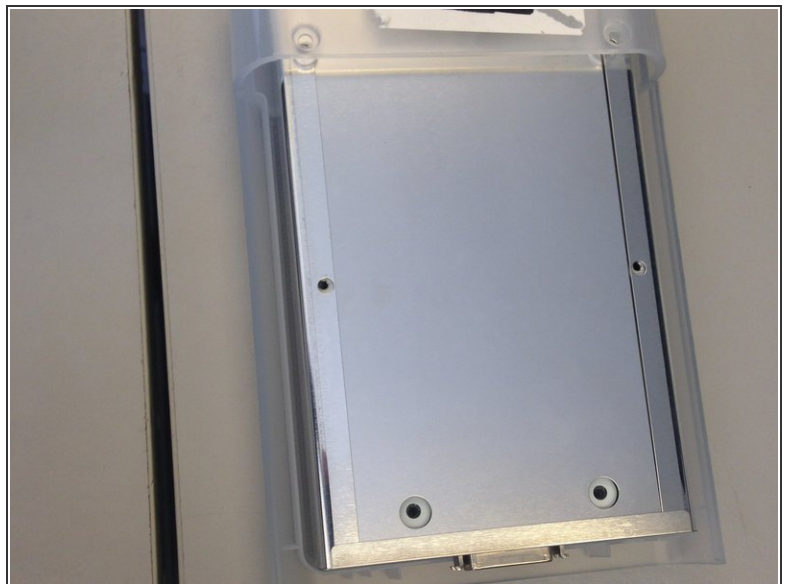
⚠ Do not pull the converter device out by the cord.

Step 3



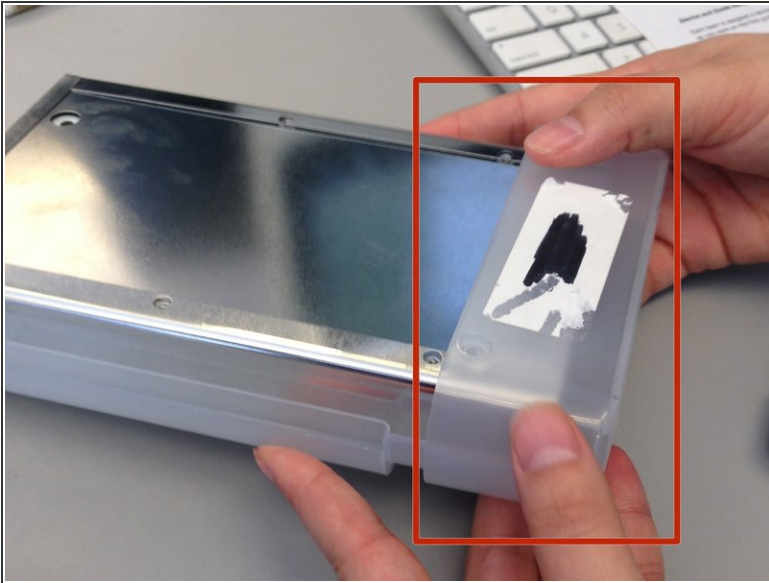
- Remove the six silver screws using a small Phillips head screwdriver.

Step 4



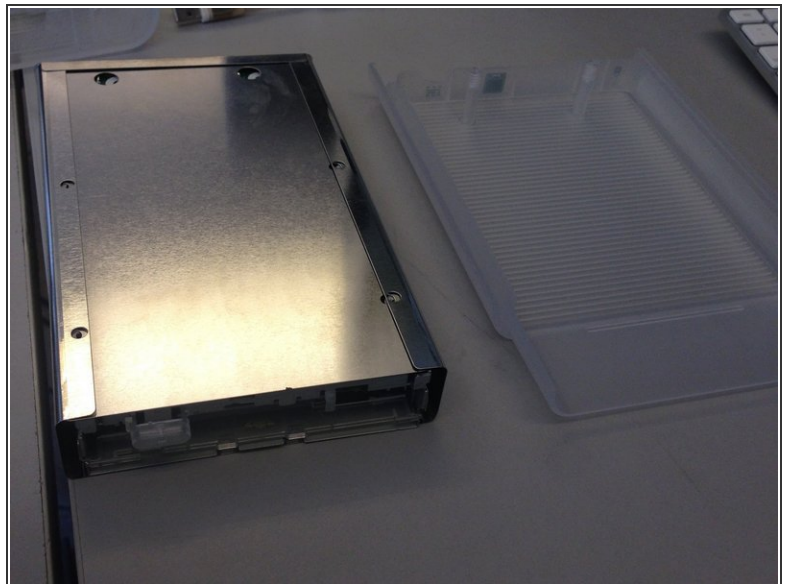
- Slide the bottom plastic panel of the shell down so it is free of the end cap and the top panel.
- Lift panel free of device.

Step 5



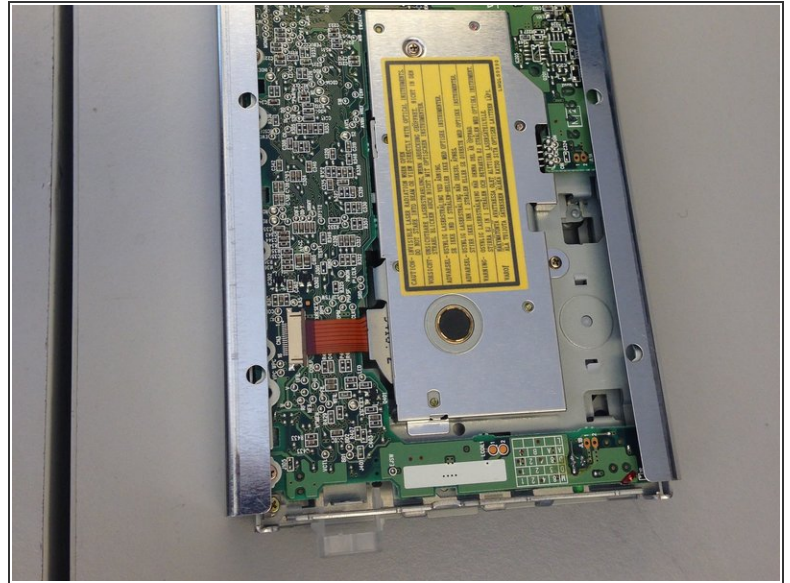
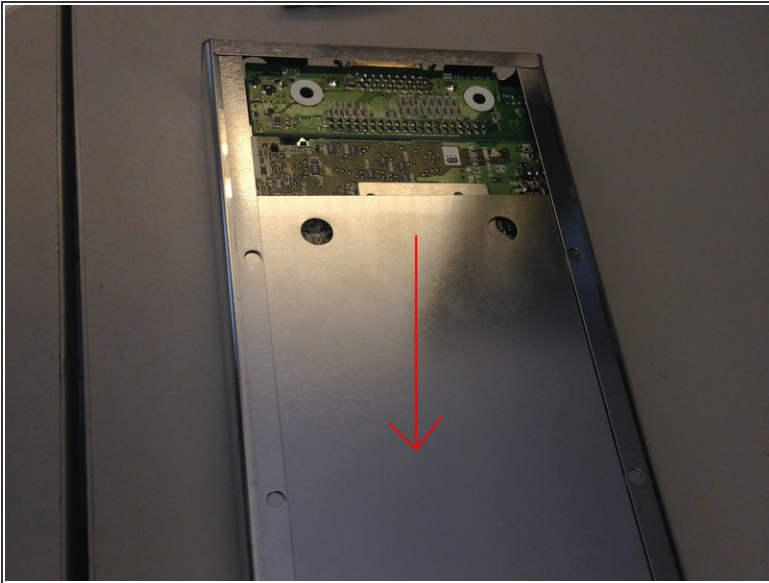
- Remove the plastic end cap by sliding it forward, freeing from the rest of the device.
- You can identify the end cap by noting the label "SuperDisk Drive" above where you would insert a floppy disk.

Step 6



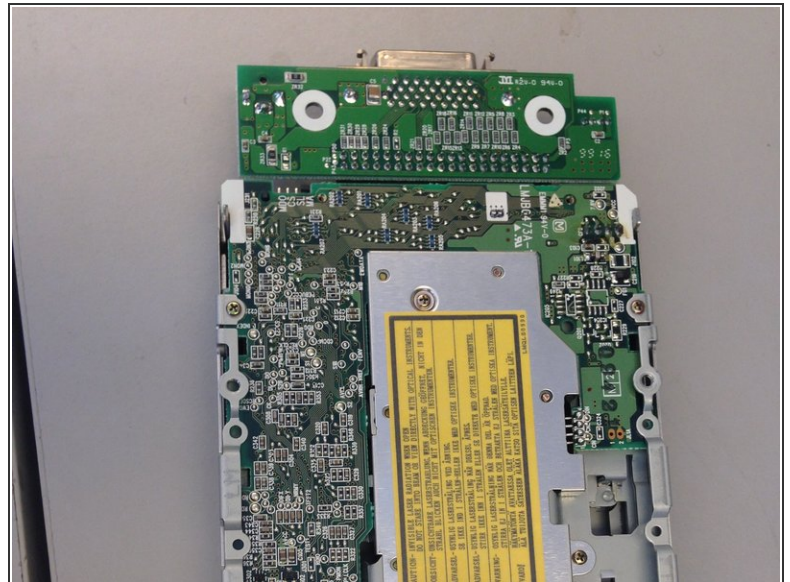
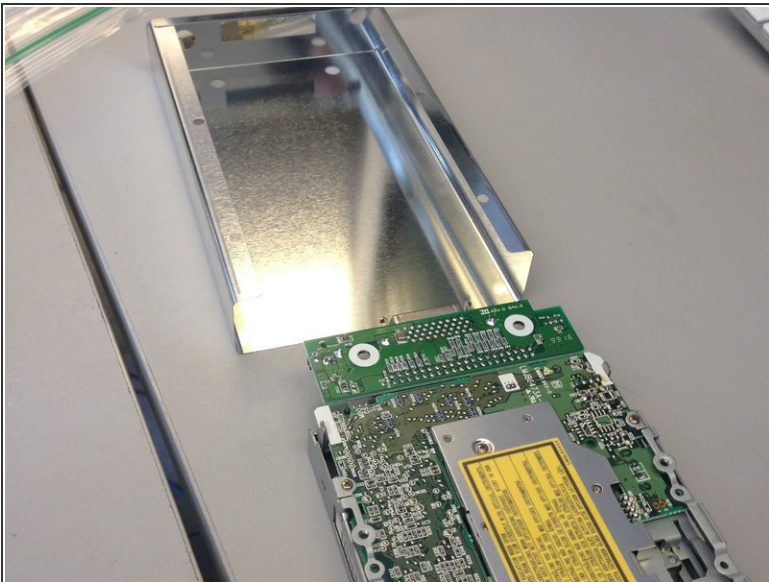
- Slide the metal housing out of the plastic shell.

Step 7 — Metal Casing



- Slide metal panel out of the metal casing.

Step 8



- Slide disk drive out of metal casing.

To reassemble your device, follow these instructions in reverse order.