



Mitsubishi T200 Screen Replacement

How to replace the screen of the Mitsubishi T200.

Written By: Taylor Lewis



INTRODUCTION

This quick guide will help you disassemble a Mitsubishi T200 phone, install a new screen, and reassemble your device.



TOOLS:

- [Small Phillips Head Screwdriver](#) (1)
- [small flat head screwdriver](#) (1)



PARTS:

- [New Mitsubishi T200 Screen](#) (1)

Step 1 — Screen



- Begin disassembling the phone by removing the phone back cover and battery.

Step 2



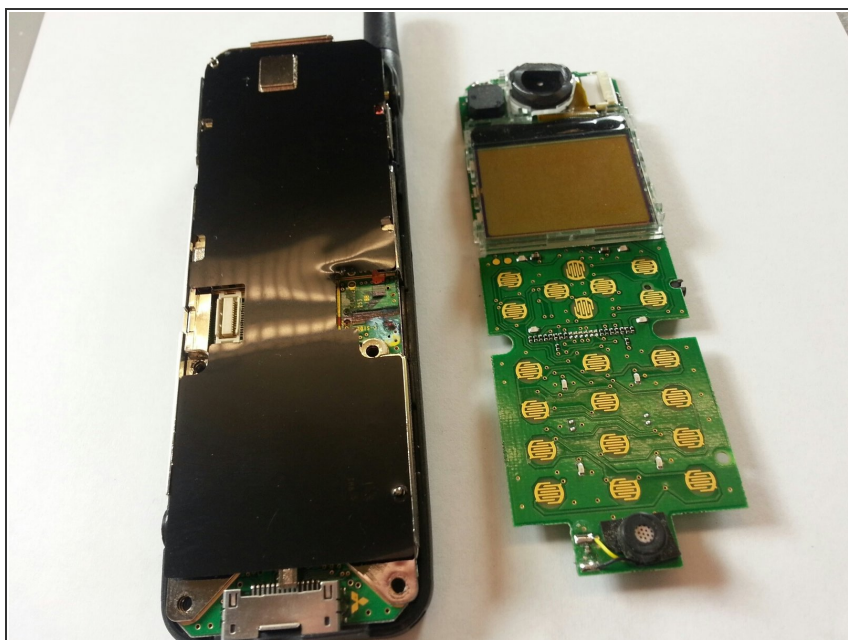
- To remove the back plate, loosen and remove the four screws by using a #00 Philips head screwdriver.

Step 3



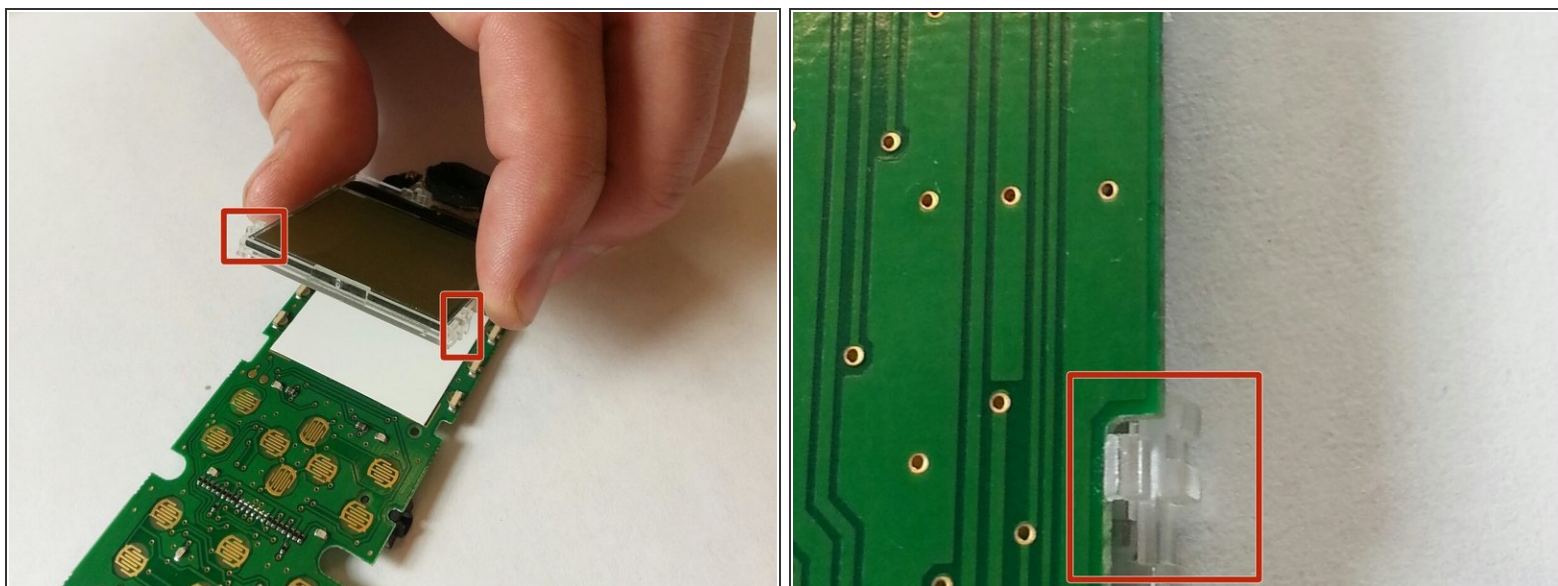
- Separate the front plastic component from the motherboard component.

Step 4



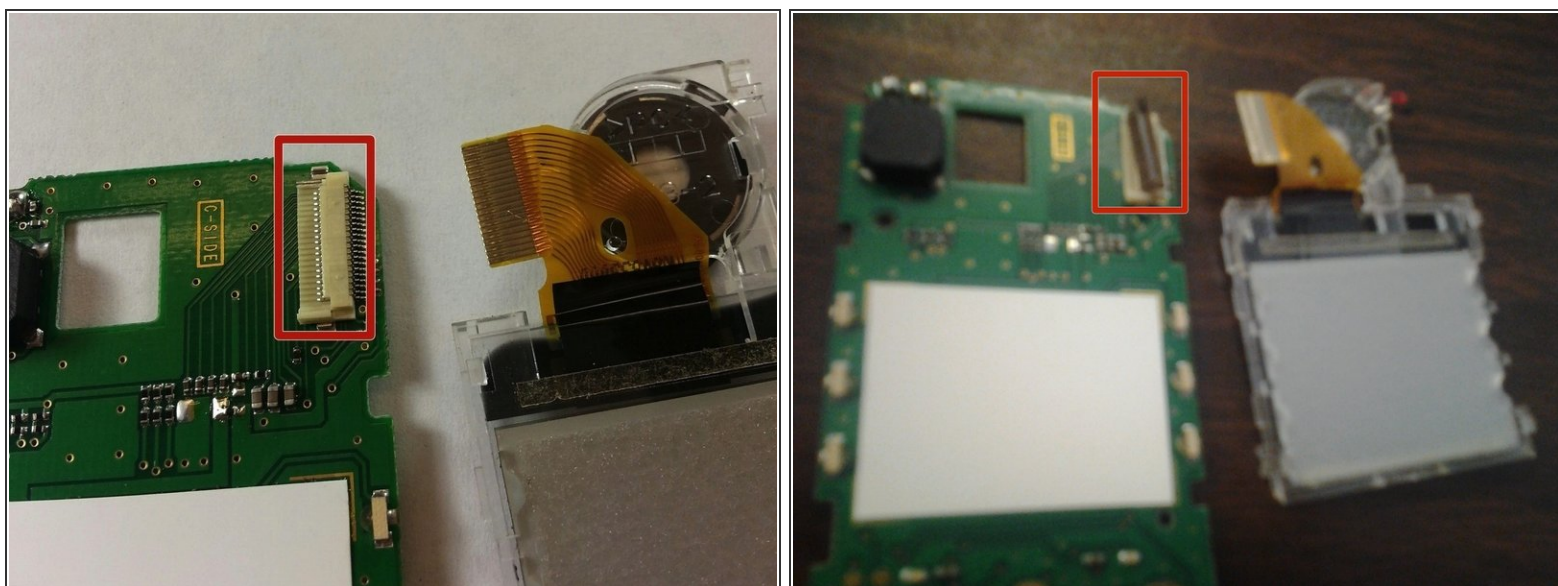
- Take the circuit board off the motherboard.

Step 5



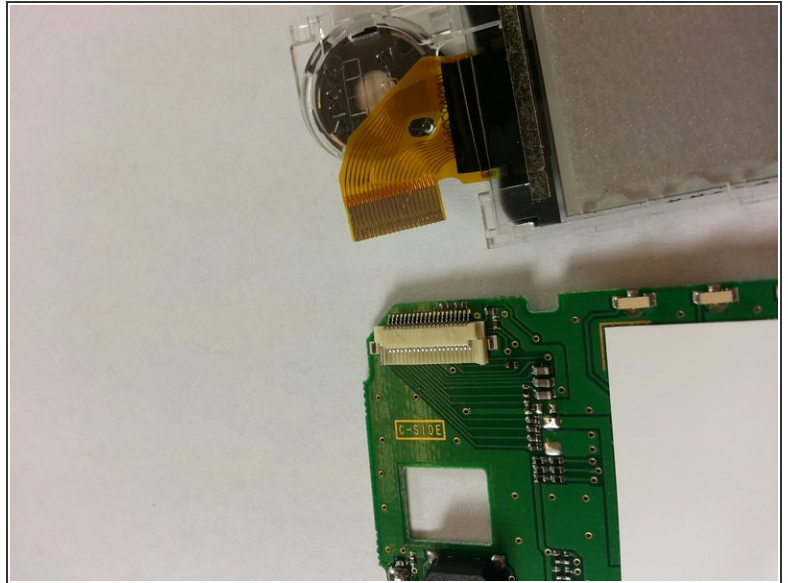
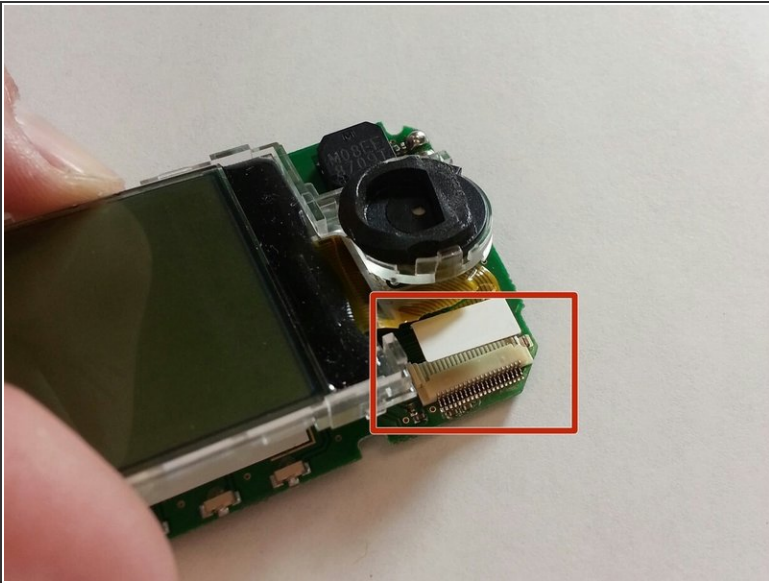
- Unclip the four clips to remove the screen (connected to the clear plastic) from the circuit board.

Step 6



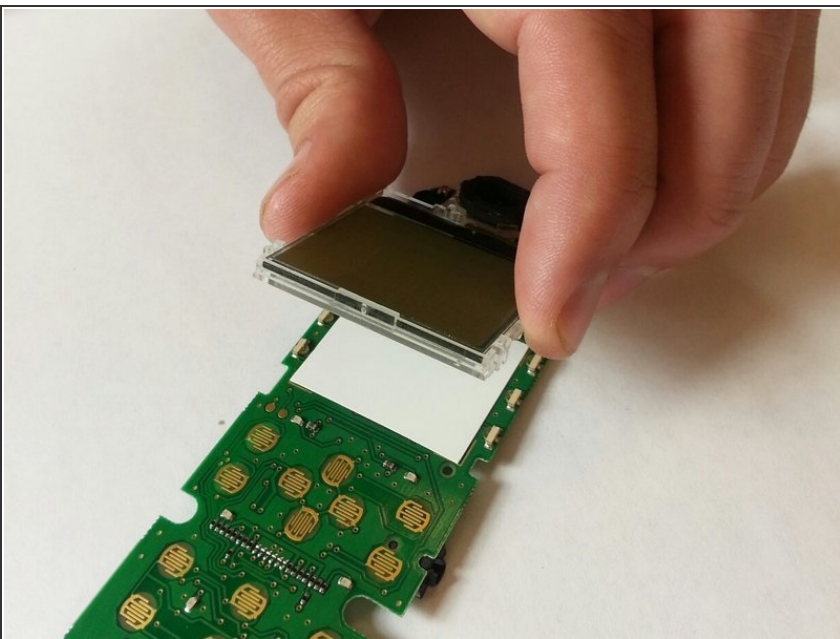
- Remove the attached ribbon from the circuit board by prying open the gray plastic clip at the top right of the circuit board.

Step 7



- We can now insert the new screen and reassemble the device.
- Place the ribbon of the new screen into the clip on the top right of the circuit board.

Step 8



- Clip the new screen onto the circuit board.

Step 9



- Replace circuit board back on top of motherboard.

Step 10



- Take the entire internal assembly and join it with the front plastic housing.
- ⚠ Ensure that the tops of both pieces clip into place before joining the bottom ones.

Step 11



- Join the phone's face assembly to the back plastic housing. Make sure you carefully insert the front into the antenna's clip first.
- Snap the whole unit together.

Step 12



- Firmly replace screws into the backing.