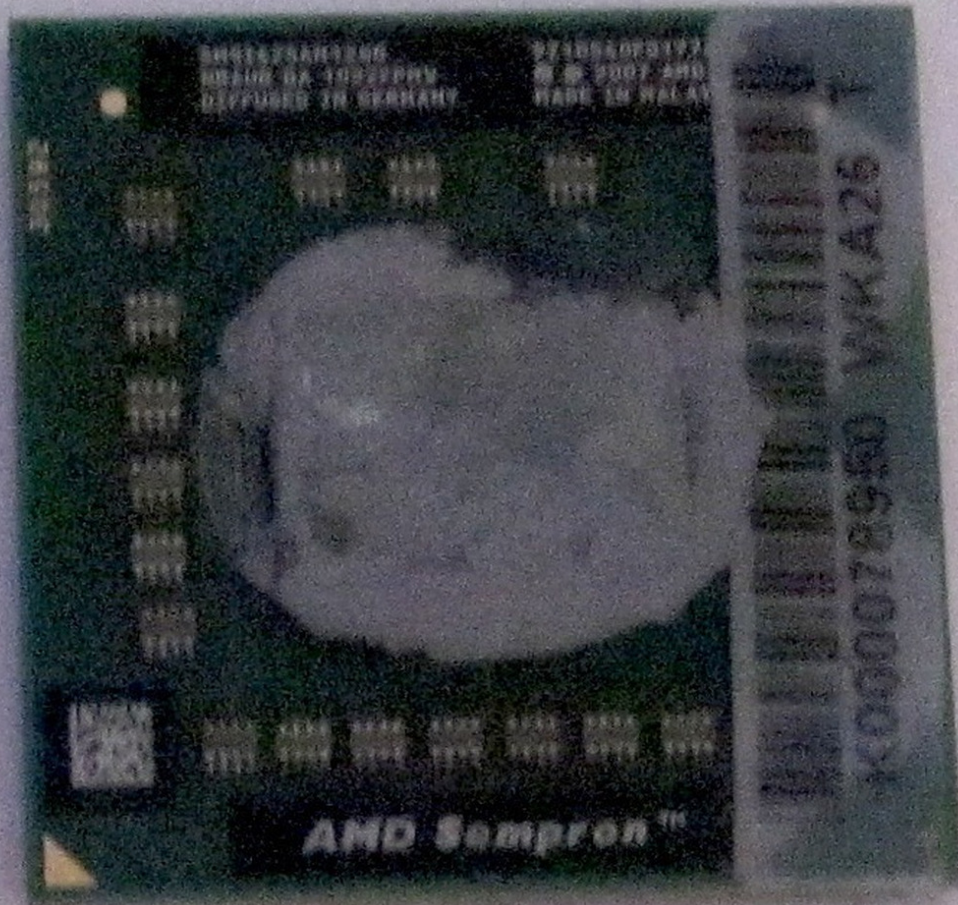




Toshiba Satellite L455D-S5976 CPU Replacement

This guide will show you how to replace the CPU in your device.

Written By: NateJohnson



INTRODUCTION

The CPU is what makes the computer work. If it is not working properly, the computer may not turn on or work in the way it needs to. This guide will show how to replace the CPU through a series of steps.



TOOLS:

- [Flathead Screwdriver](#) (1)
- [Phillips #1 Screwdriver](#) (1)



PARTS:

- [Replacement CPU](#) (1)

Step 1 — Battery



- Unlock the right tab by sliding it to the right with your finger.

Step 2



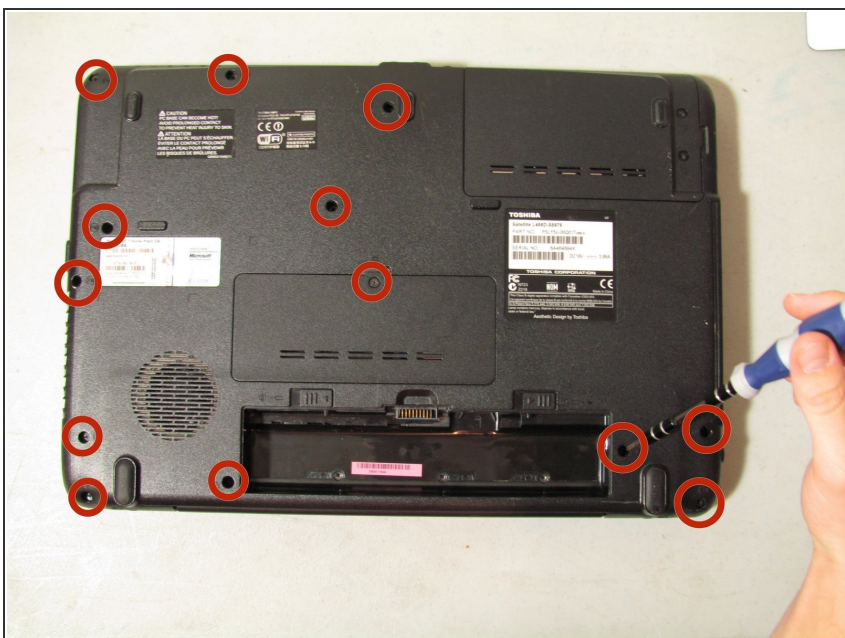
- Hold the left tab to the left using your left hand.

Step 3



- Remove the battery by placing your finger in the middle groove and lifting up.

Step 4 — Optical Drive



- Remove the 13 Phillips #1 10mm screws from the backside of your computer using a Phillips #1 screwdriver.

Step 5



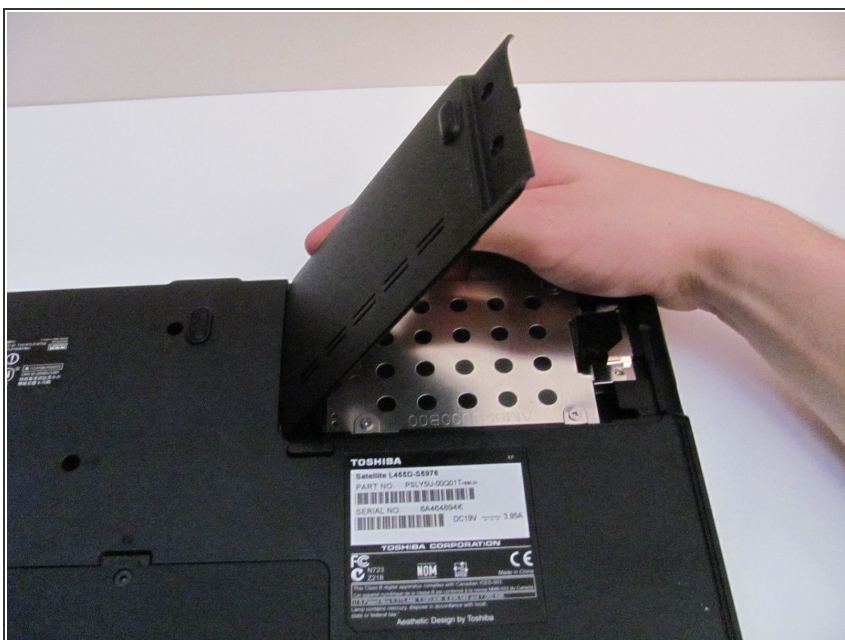
- Remove the two Phillips #1 6mm screws from the backside of your computer using a Phillips #1 screwdriver.

Step 6



- Remove the three 3mm screws from beneath the battery with a Phillips #1 screwdriver.

Step 7



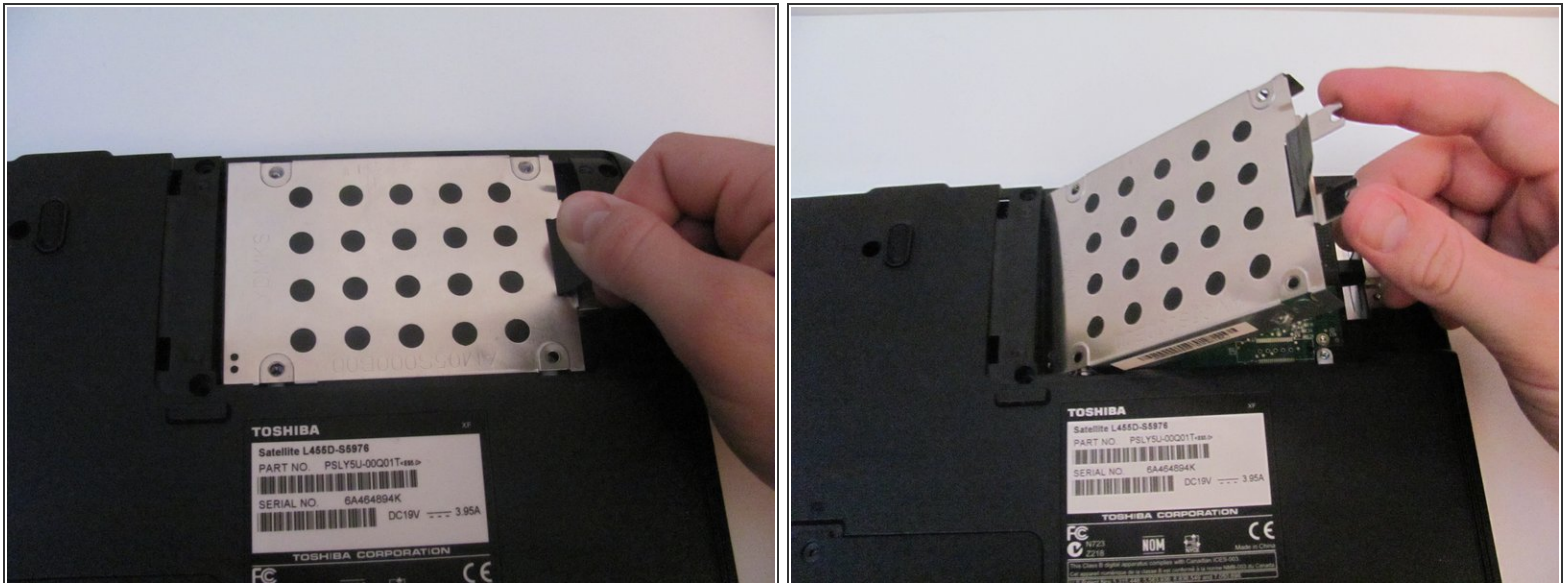
- Lift up the corner panel and remove it with your hand.

Step 8



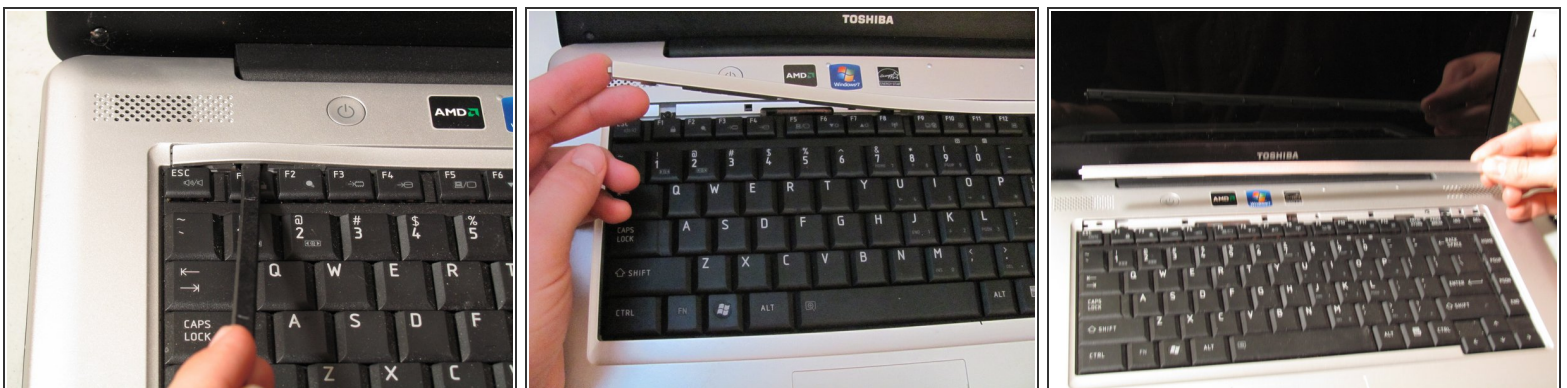
- Unscrew the four Phillips #1 3mm using a Phillips #1 screwdriver.
- Unscrew the four 10mm screws around hard drive using a Phillips #1 screwdriver.

Step 9



- To remove the hard drive case, first pull the black tab to the right.
- Then pull the black tab up to remove the case.

Step 10



- Remove the plastic strip above the "F" keys using the spudger by placing the small end of the spudger under the strip and lifting up.

Step 11



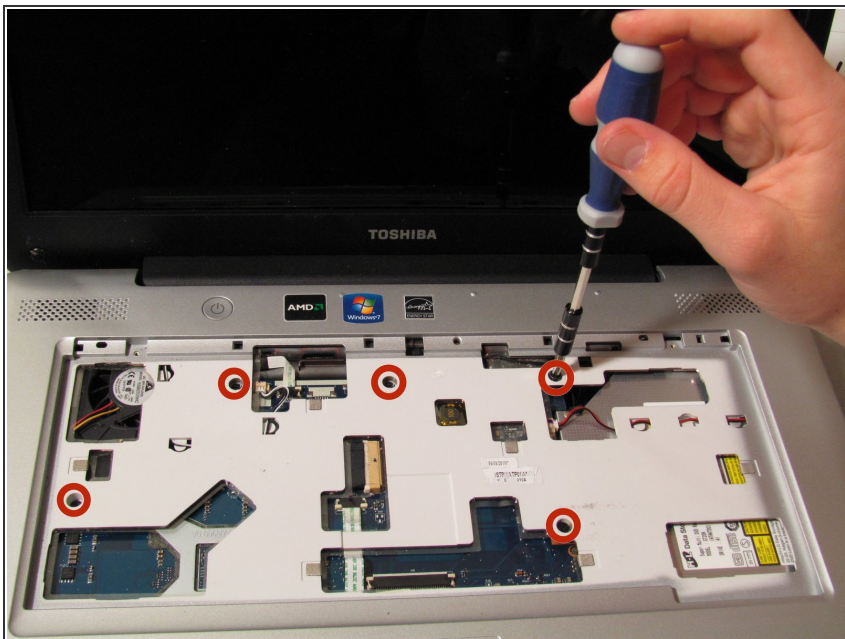
- Remove the two Phillips #1 3mm screws underneath the plastic strip using a Phillips #1 screwdriver.

Step 12



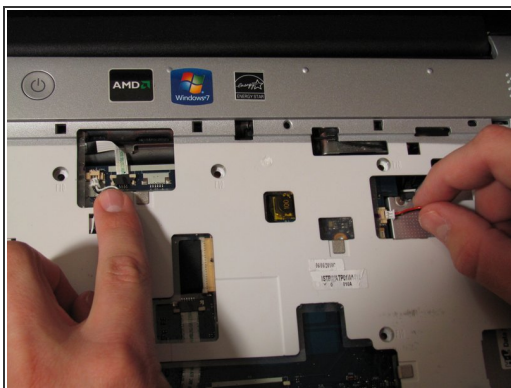
- Lift the keyboard up and remove it with your hands.

Step 13



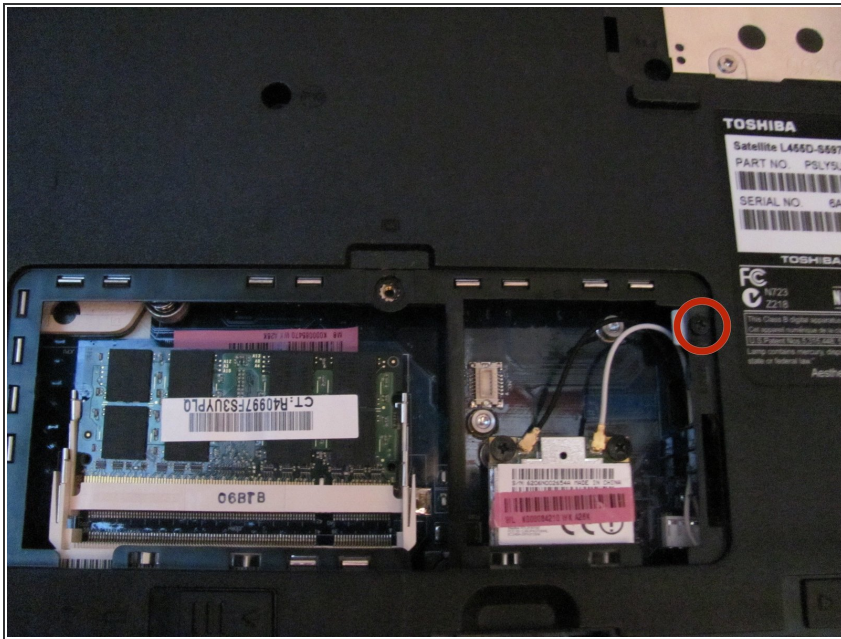
- Remove the five Phillips #1 10mm screws underneath the keyboard using a Phillips #1 screwdriver.

Step 14



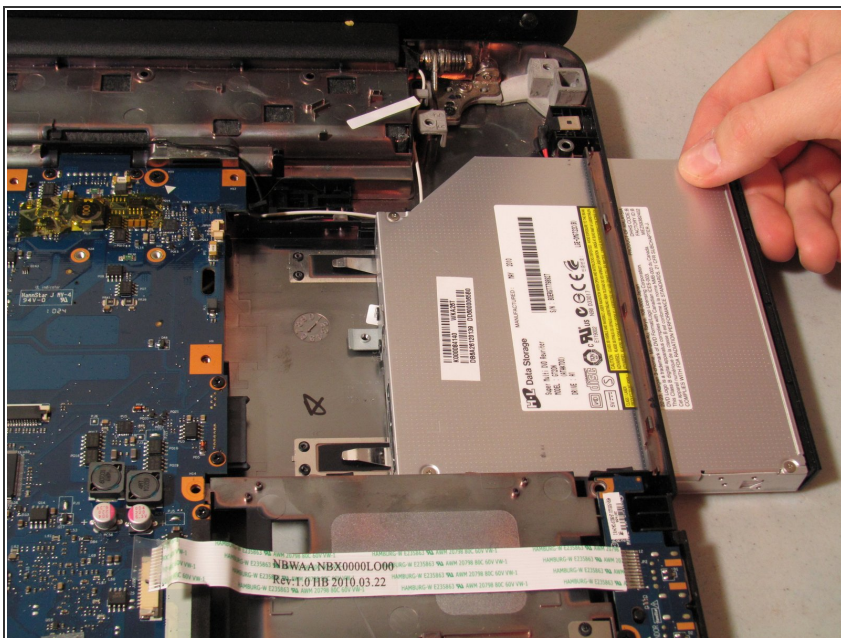
- Lift up the plastic panel and carefully disconnect the red and white ports.
- Remove the panel

Step 15



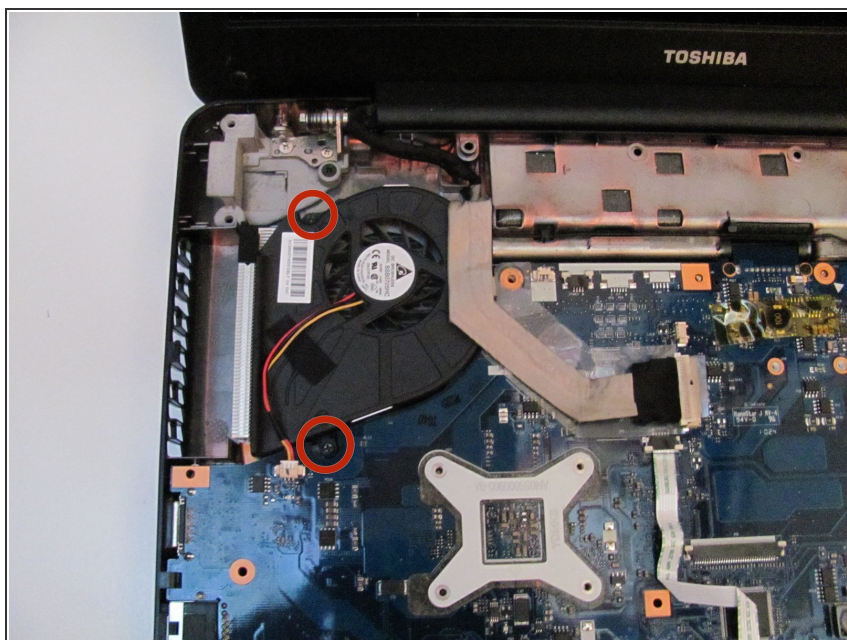
- Turn the laptop over so the bottom is facing up
- Then remove the 3mm screw with a #1 screwdriver, located underneath the panel containing the wifi card and RAM

Step 16



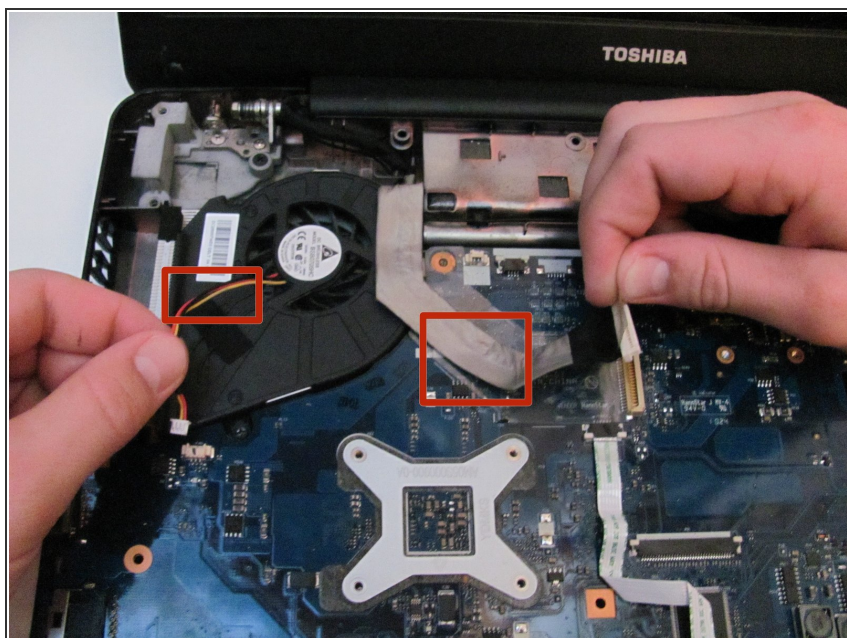
- Turn the laptop back over so the motherboard is facing up
- Now slide the optical drive out of the computer by gently pulling it to the right

Step 17 — CPU



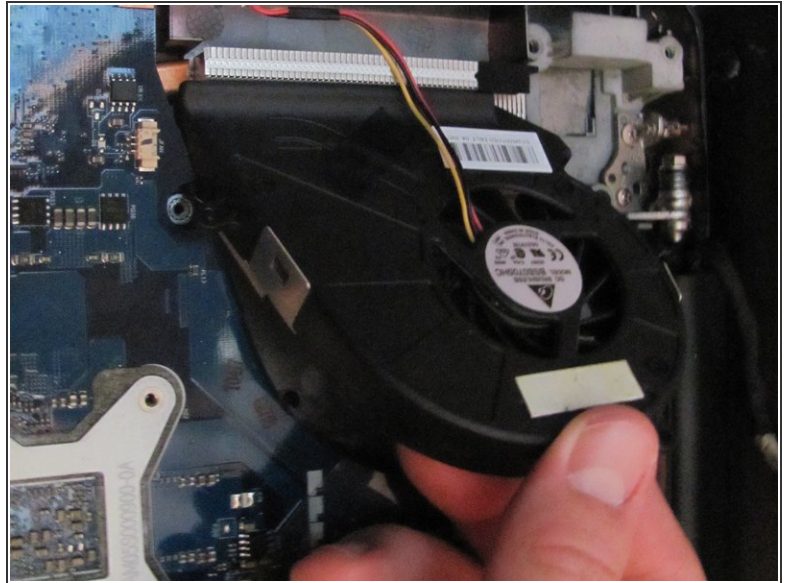
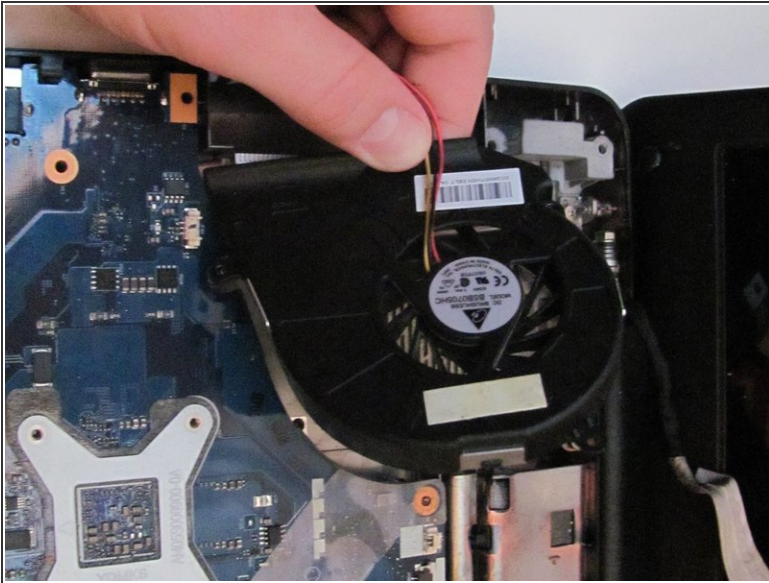
- Remove the two Phillips #1 3mm screws from the fan using a Phillips #1 screwdriver.

Step 18



- Remove the two cables from the fan.

Step 19



- Lift up on the fan and remove it from the computer.

Step 20



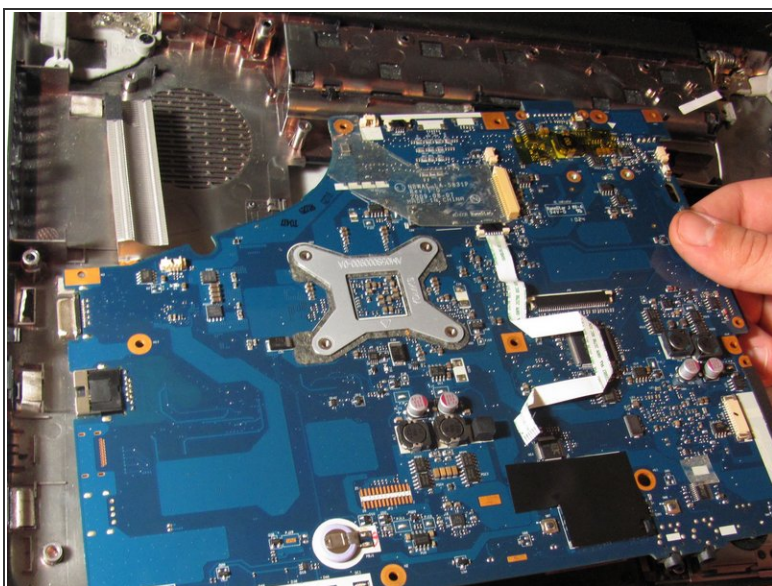
- Remove the six 6mm screws from the motherboard with a #1 phillips screwdriver.

Step 21



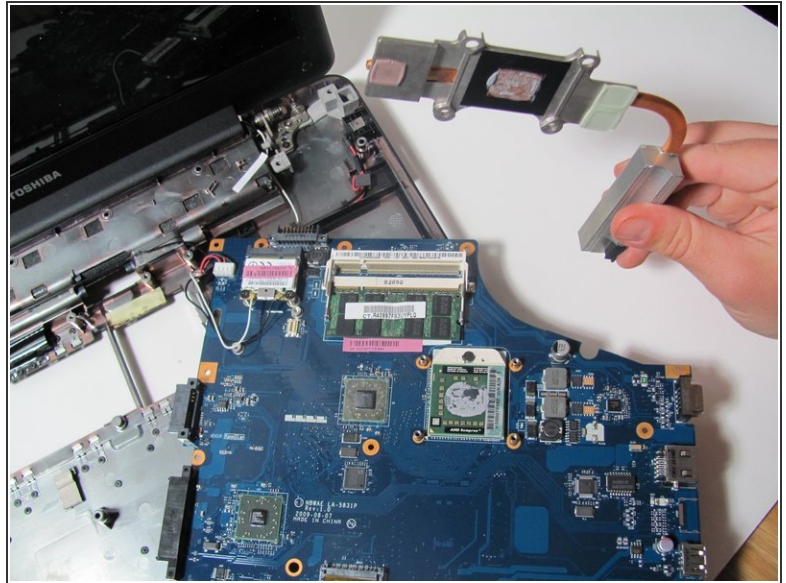
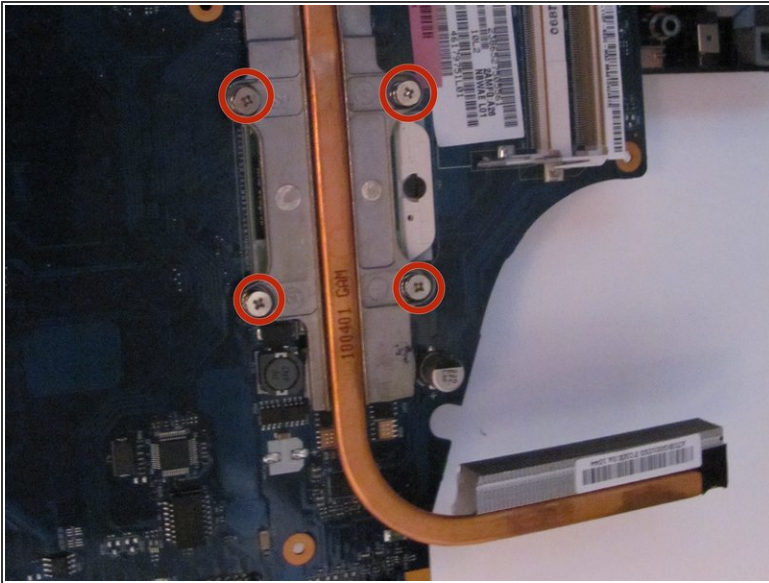
- Remove the lone 10mm screw from the motherboard with a phillips #1 screwdriver.

Step 22



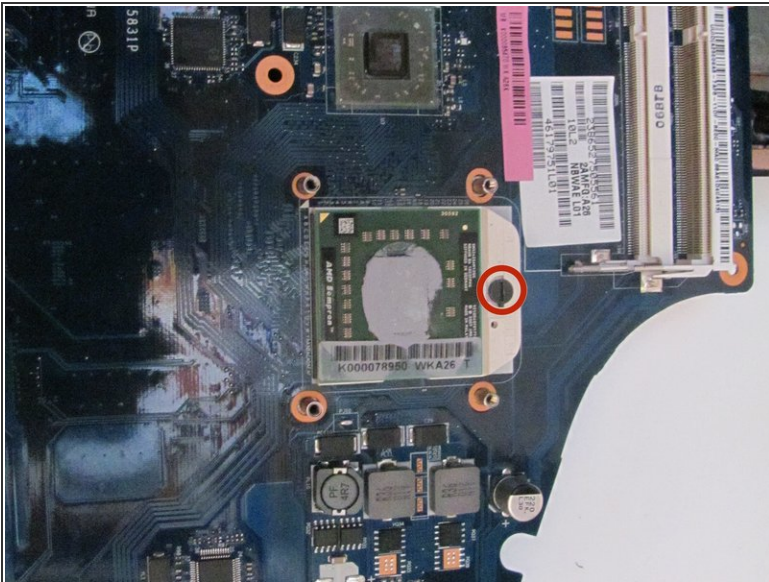
- Remove the motherboard with your hands by carefully lifting up and pulling out.

Step 23



- Remove the four Phillips #1 6mm single coil pickup screws from the cooling unit and remove the cooling unit.

Step 24



- Using a flathead screwdriver, undo the lock on the CPU with a half turn in the counterclockwise direction.
- Remove the CPU by lifting up on the chip.

To reassemble your device, follow these instructions in reverse order.