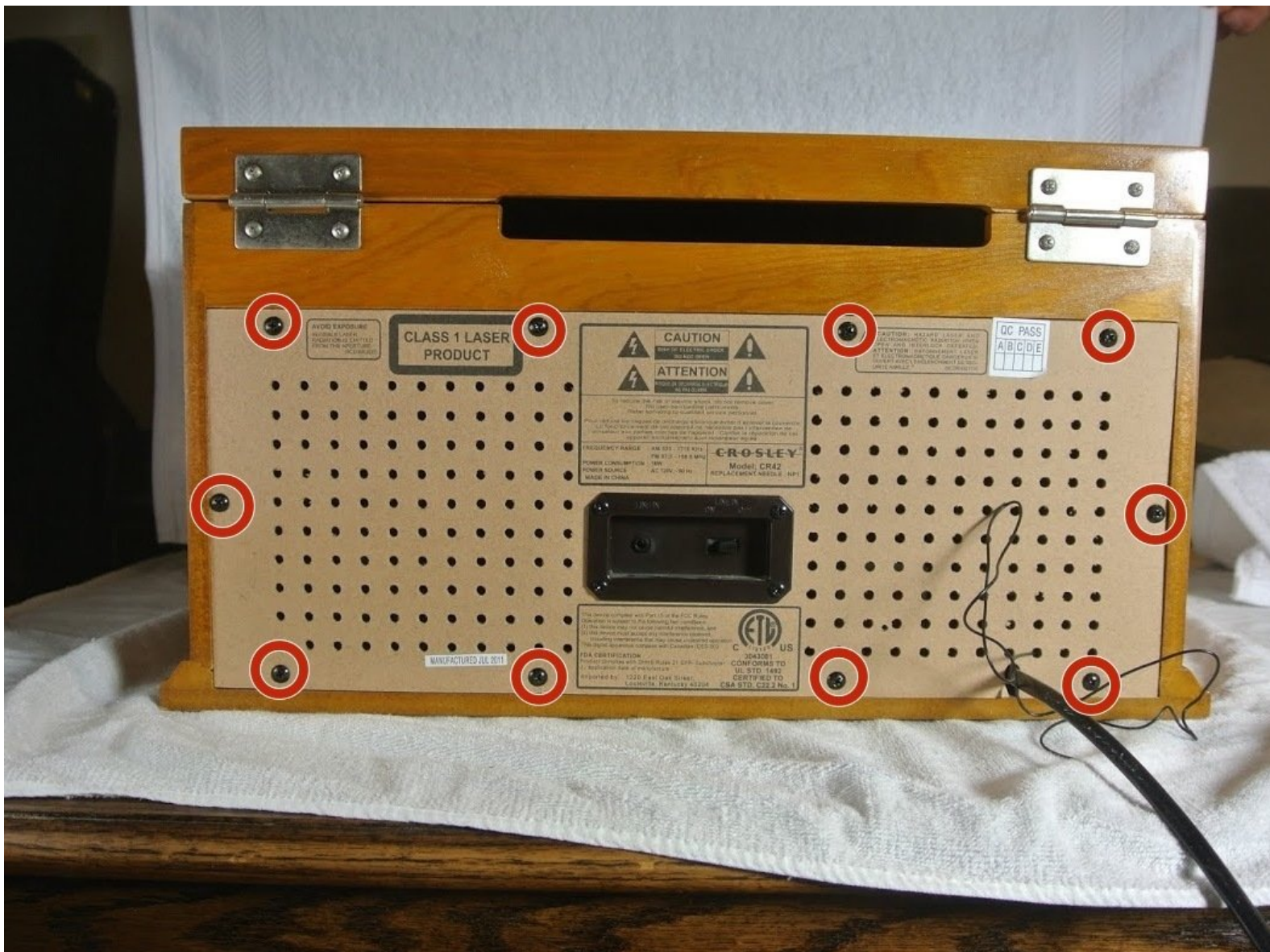




# Crosley CR42 Power Cable Replacement

It might be necessary to replace the power cable in case of possible breaks in the wire. Replacing it uses minimal parts.

Written By: Eric Dybsetter



# INTRODUCTION

This tutorial will provide the necessary information on how to replace a power cable in the Crosley CR42.



## TOOLS:

- [Phillips #0 Screwdriver](#) (1)
- [Cordless Drill](#) (1)  
(Optional)
- [Large Needle Nose Pliers](#) (1)

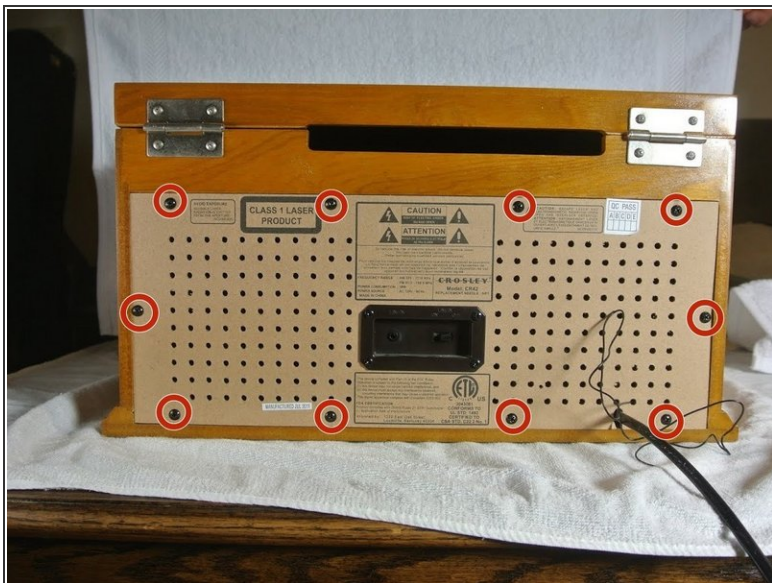


## PARTS:

- [Twist on Wire Connectors](#) (2)

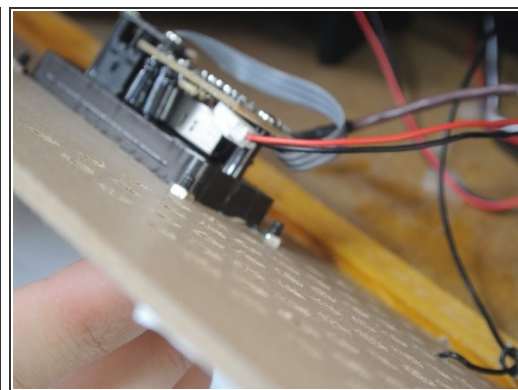
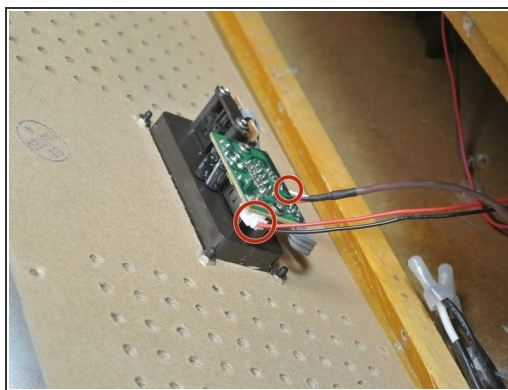
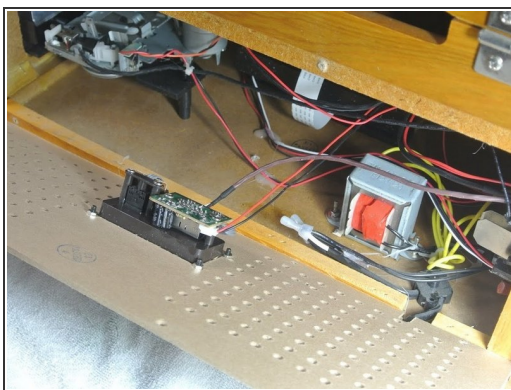


## Step 1 — Power Cable



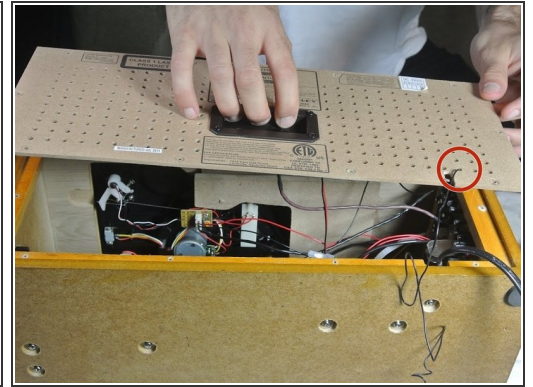
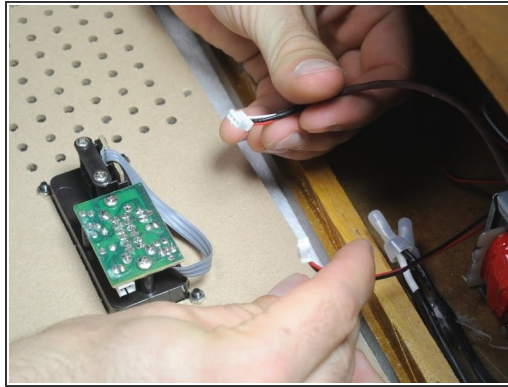
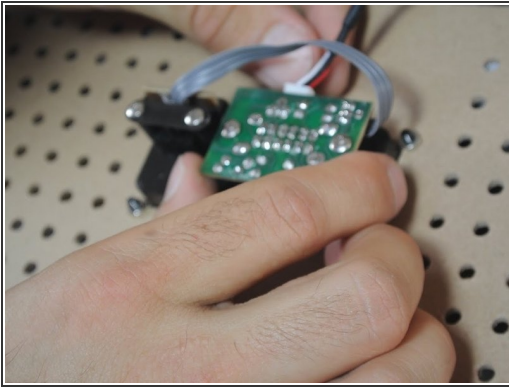
- Turn the device around until you are looking at the line-out port.
- With a cordless drill *or* Phillips #0 screwdriver, remove the ten 12-mm screws.

## Step 2



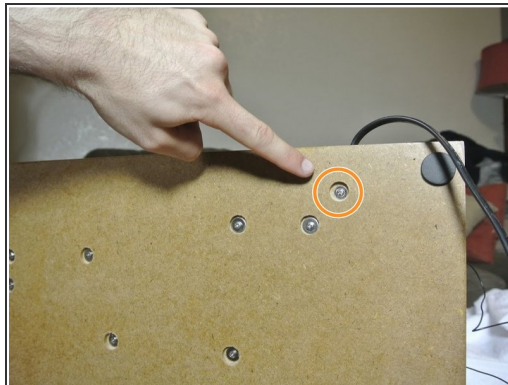
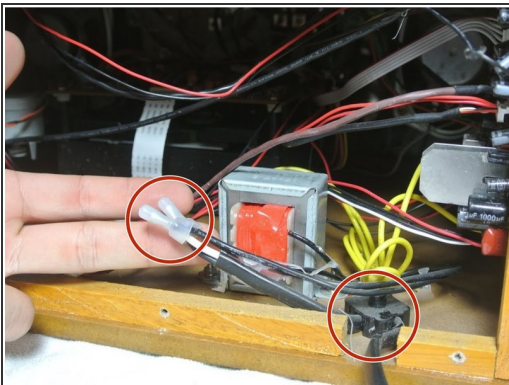
- Gently remove the back of the device. It should be connected by two wires.

## Step 3



- Gently remove both wires.
- After de-threading the antenna wire, remove the back of the device and set it aside.

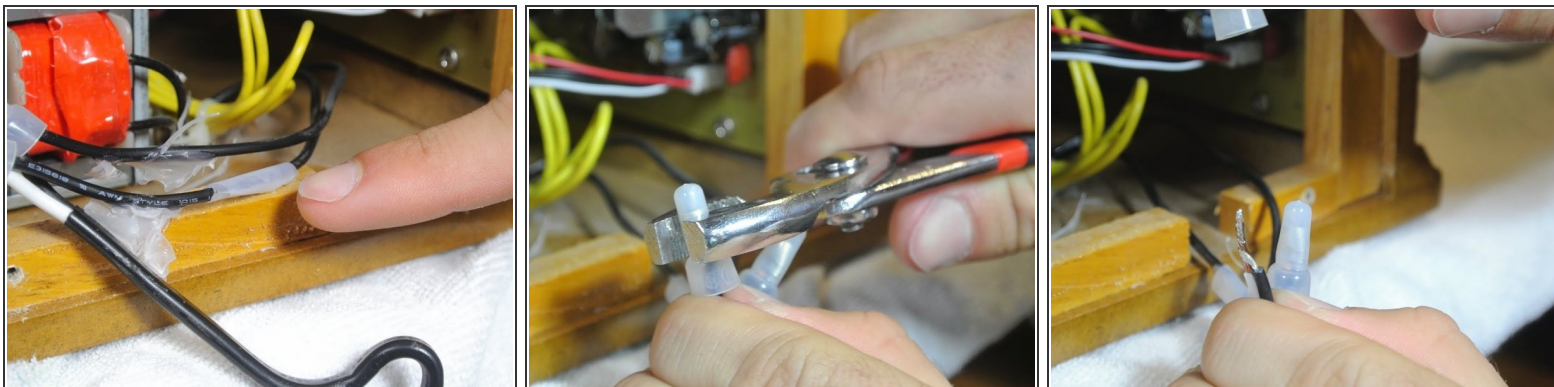
## Step 4



- Locate where the power cable connects to the device.
- Pick up the device and locate the screw holding the small black peg to the device. Unscrew it and set the screw aside.



## Step 5



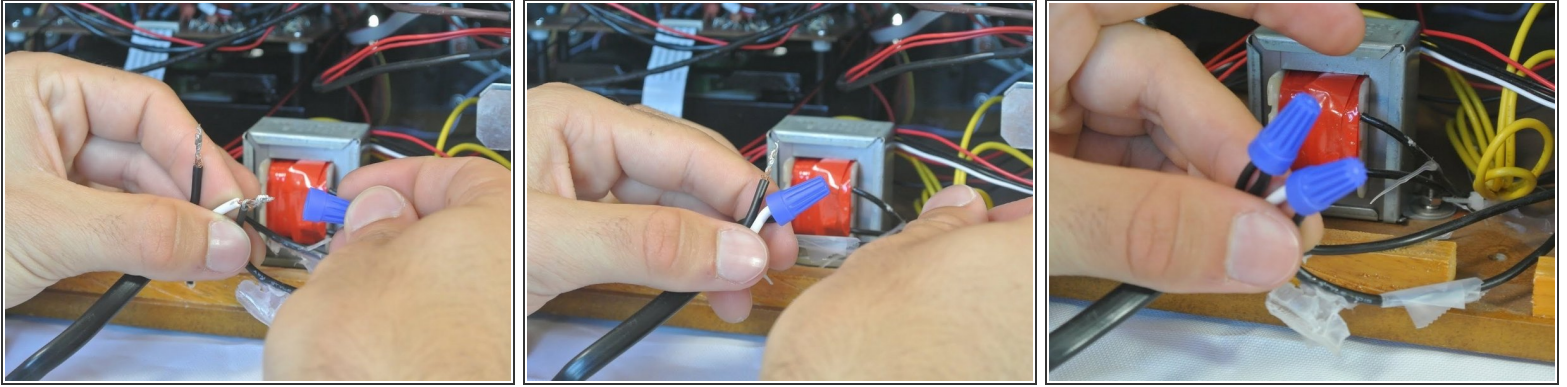
- With the pliers, remove the wire connectors. You may need to be forceful
- ⓘ It is wise to attach a marking in order to recognize how the wires should be reattached.

## Step 6



- Pull apart both groups of wires.
- ⓘ After getting your replacement power cord, make sure you recognize how the wires should reattach.

## Step 7



- Twist the connecting wires together.
- Attach the twist-on wire connectors to the exposed wires.

To reassemble your device, follow these instructions in reverse order.