



# Linksys E1200 Router Power Adapter Replacement

A guide to repairing or replacing a power adapter for the wireless router Linksys E1200.

Written By: Tahisha Hicks



---

## INTRODUCTION

There may come a time when the cord or power adapter will fail, either through general use or lifetime failure.

This may require cutting and soldering, so be prepared to potentially void your warranty.

This may also be used for other devices, as the principal is the same.



### TOOLS:

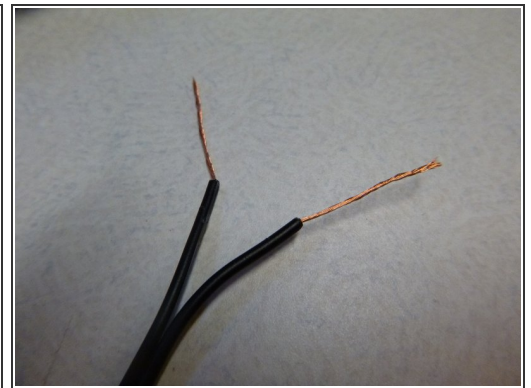
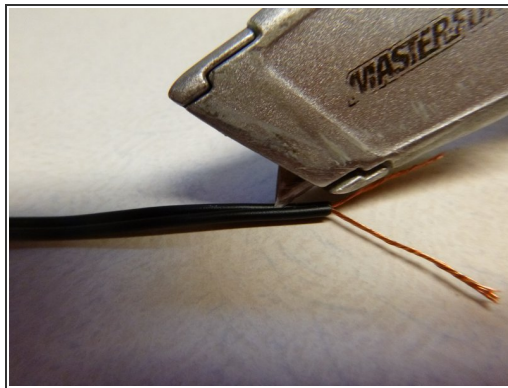
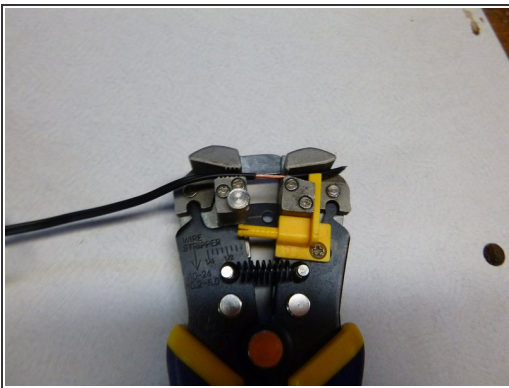
- [Soldering Workstation](#) (1)
  - [Heat Shrink Tubing Assortment](#) (1)
  - [Safety Glasses](#) (1)
  - [Leather Work Gloves](#) (1)
-

## Step 1 — Power Adapter



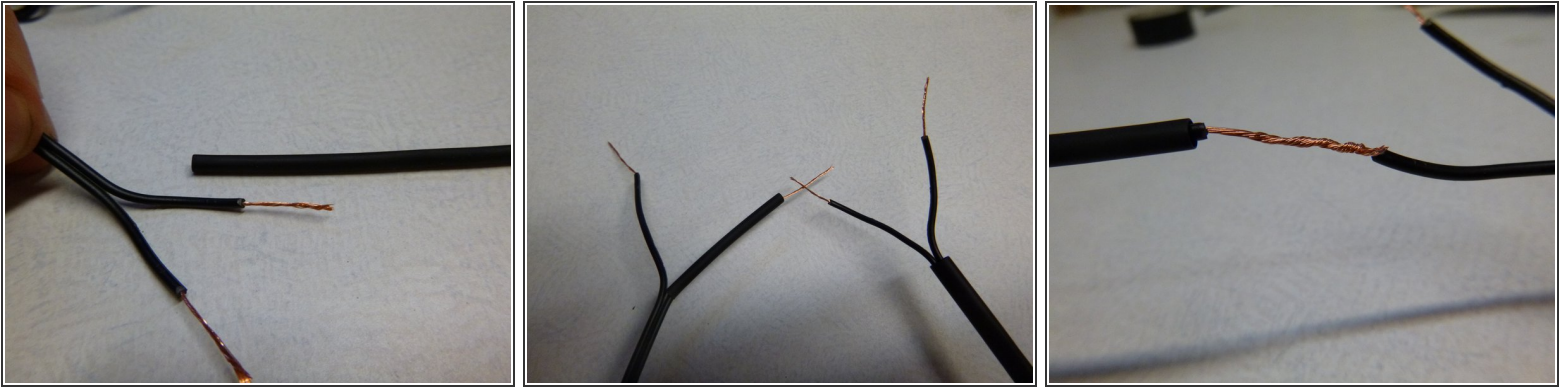
- Take note of the wire labeling. Each wire has either a Stripe or Text. When lining up the wires after cutting, it is critical that you keep Stripe with Stripe, and Text with Text. Failure to do so will result in damage to the device.

## Step 2



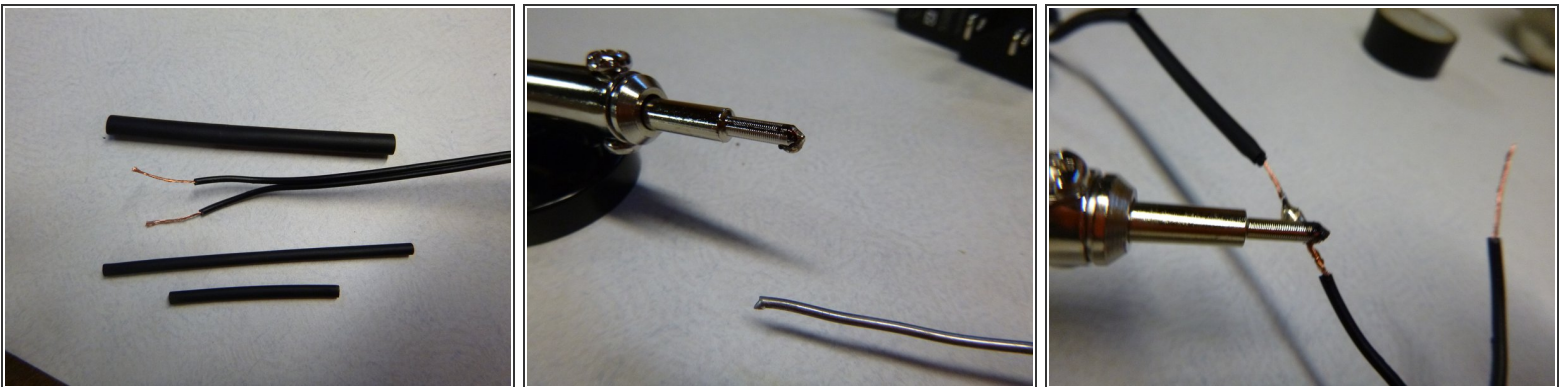
- Begin by cutting the wire.
- Strip the wire.
- Separate the two halves of each wire, and split the two with a utility knife. Don't go too far! You will need the extra space to overlay HeatShrink before the soldering is down.

### Step 3



- Twist the individual strands together to make a single pigtail.
- Overlay with the corresponding wire (Step 1), and twist together, but not before sliding on the HeatShrink.

### Step 4



- Pull the wire separation back far enough on at least one side to permit Heat-Shrink to slip over the wire insulation.
- Now the soldering. Place the pre-heated iron on the wires on a heat-resistant, flame proof surface. Make sure that the Heat-Shrink is nowhere near the soldering iron.
- Let it heat for a few seconds (copper is an excellent conductor of heat), then touch the end of the solder to the wire. If fully heated, it should flow easily into the joint.



## Step 5



- To protect the solder job, you will need to slide the shrink wrap over the patch, then heat it so that it grips the wire securely. You can use a heat gun or the flat side of a soldering iron. Be careful to not let it burn!
- Repeat for the other wire. Repeat for the overall sheath.

To reassemble your device, follow these instructions in reverse order.