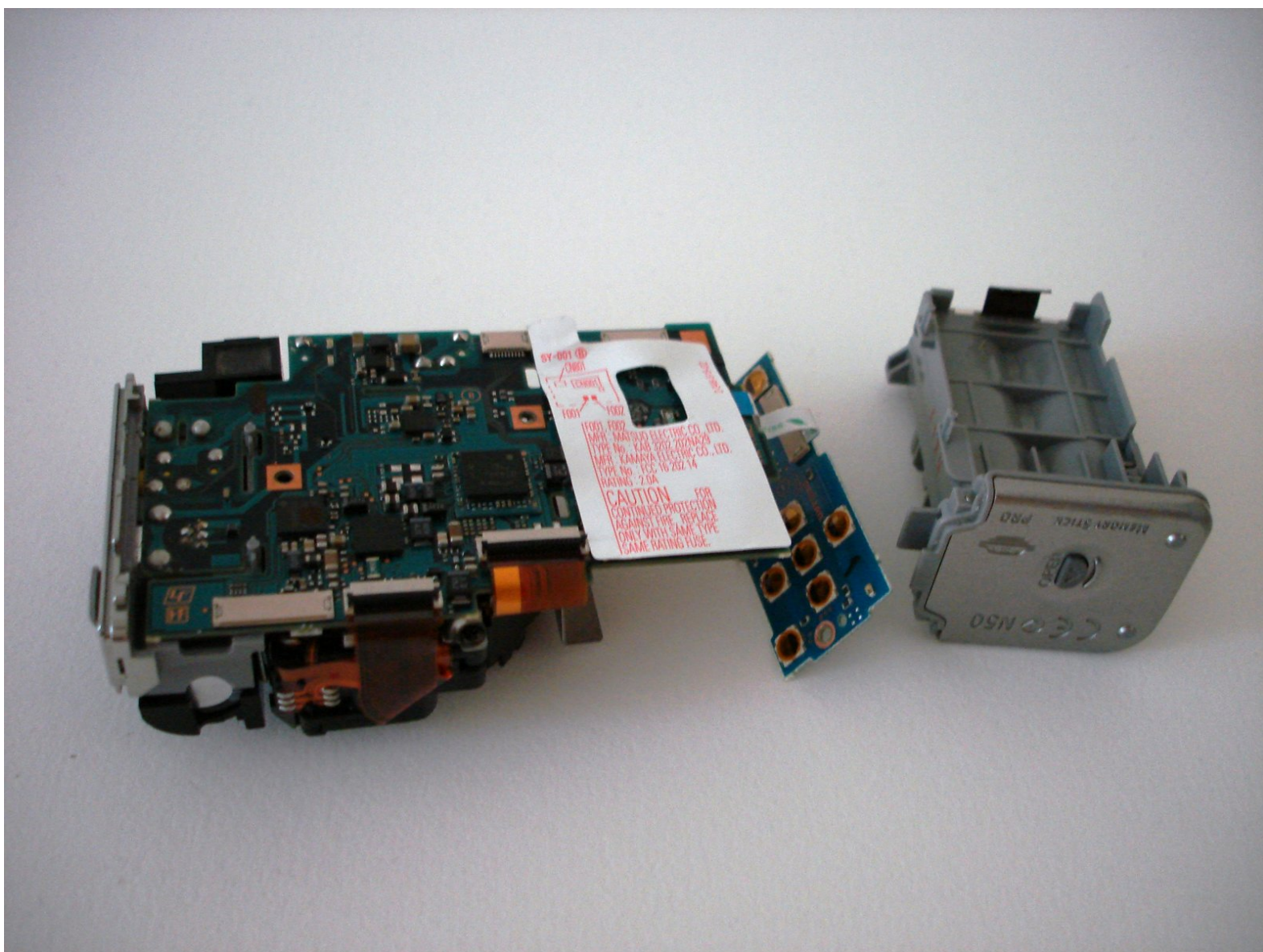




Sony Cyber-shot DSC-W5 battery compartment replacement

Written By: Thomas



INTRODUCTION

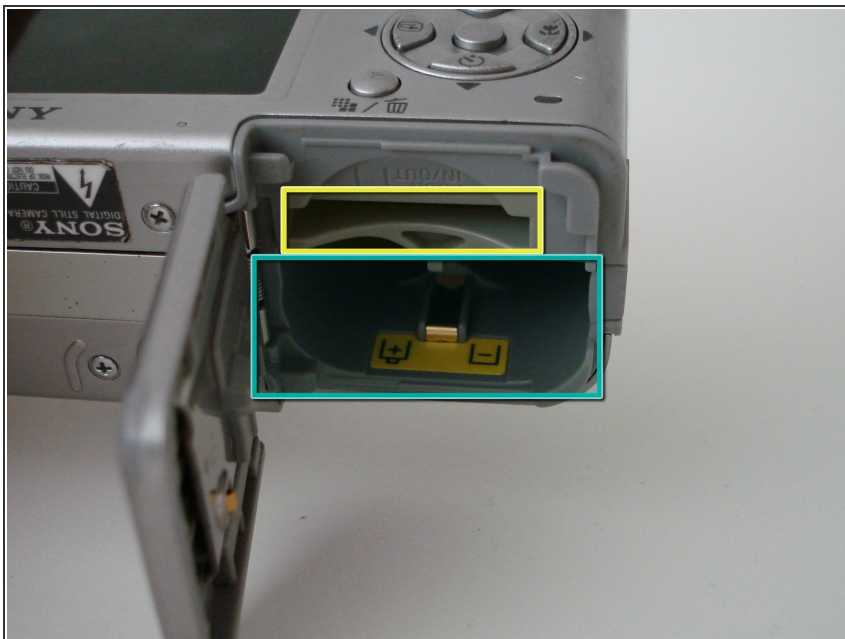
Disassembling Sony Cybershot DSC-W5 in order to get to the battery terminal so that it can be replaced.



TOOLS:

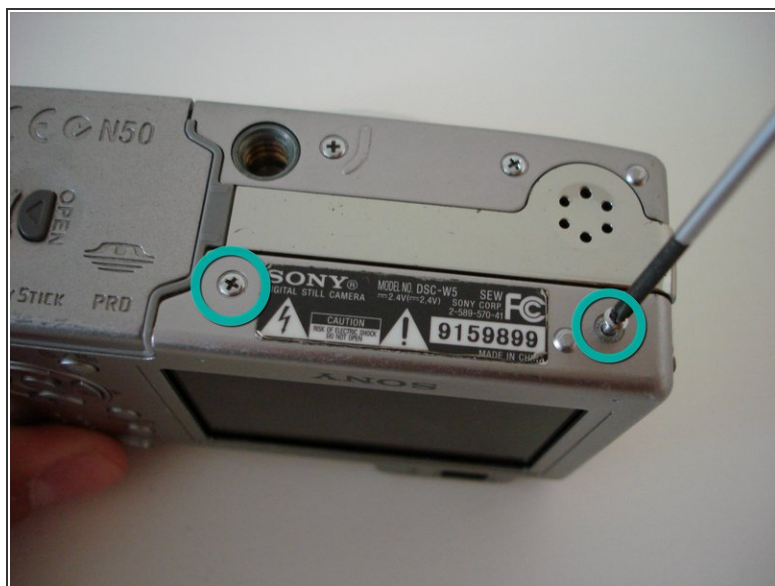
- [Phillips #00 Screwdriver](#) (1)
 - [Paper Clip](#) (1)
 - [Tweezers](#) (1)
-

Step 1 — Back Cover



- Remove Memory Stick Pro from the card reader slot on the bottom of the camera.
- Remove both batteries.

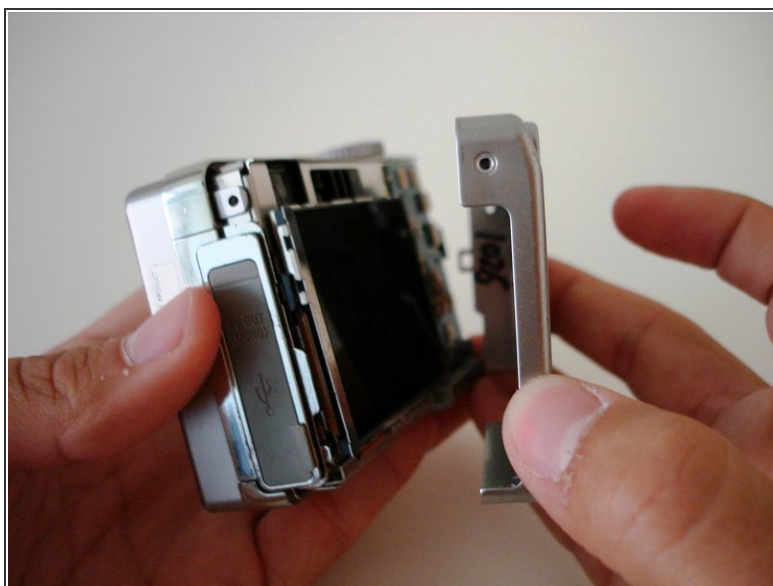
Step 2



- Remove the single visible screw from both sides of the camera.
 - Remove the two screws that are adjacent to the warning label, which is on the underside of the camera.
- i** Do **NOT** remove all four screws from the bottom.

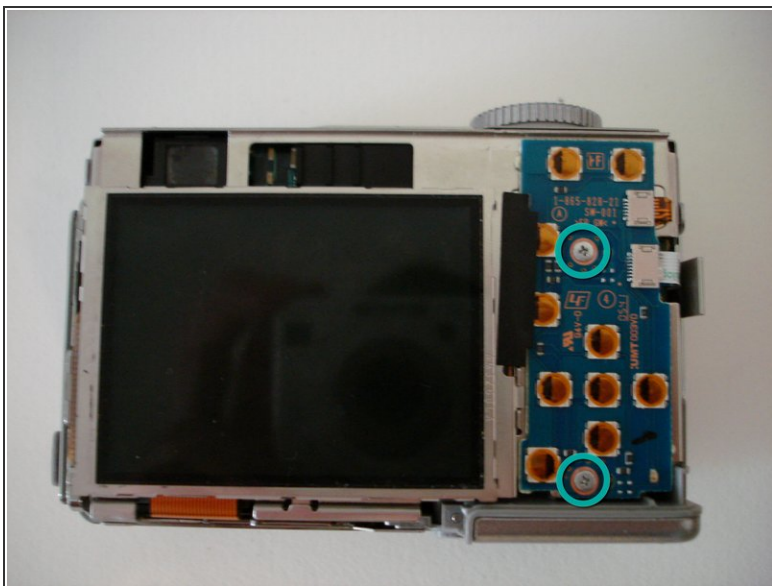
This document was generated on 2020-11-21 08:46:15 PM (MST).

Step 3



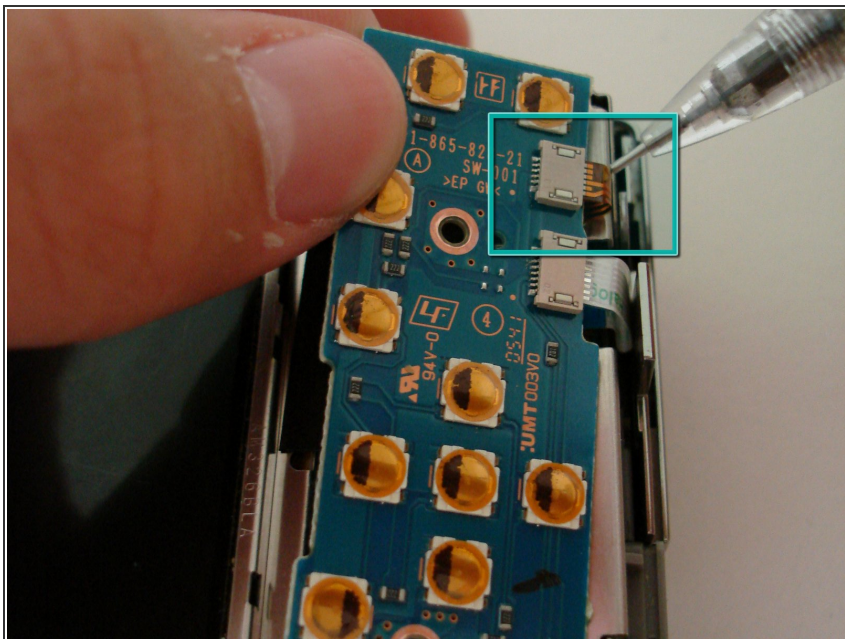
- Gently remove the back cover from the camera.
- ⓘ The first time the case is removed, it will be stiff. Be patient and gently rock the cover back and forth until it slides free.

Step 4 — LCD Screen



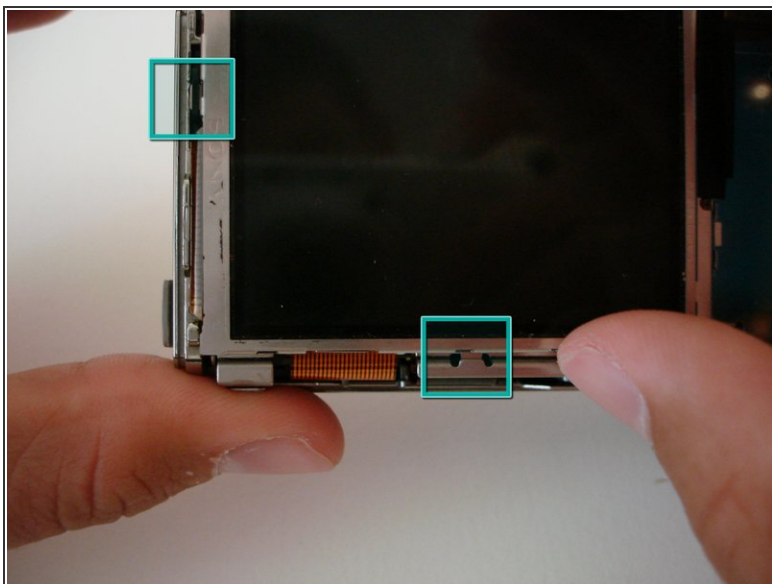
- Remove the two screws holding the circuit board down.

Step 5



- Detach the orange cable from the board.
- ⓘ Use a thin object, like a paperclip, to gently pry the cable off the connector.

Step 6



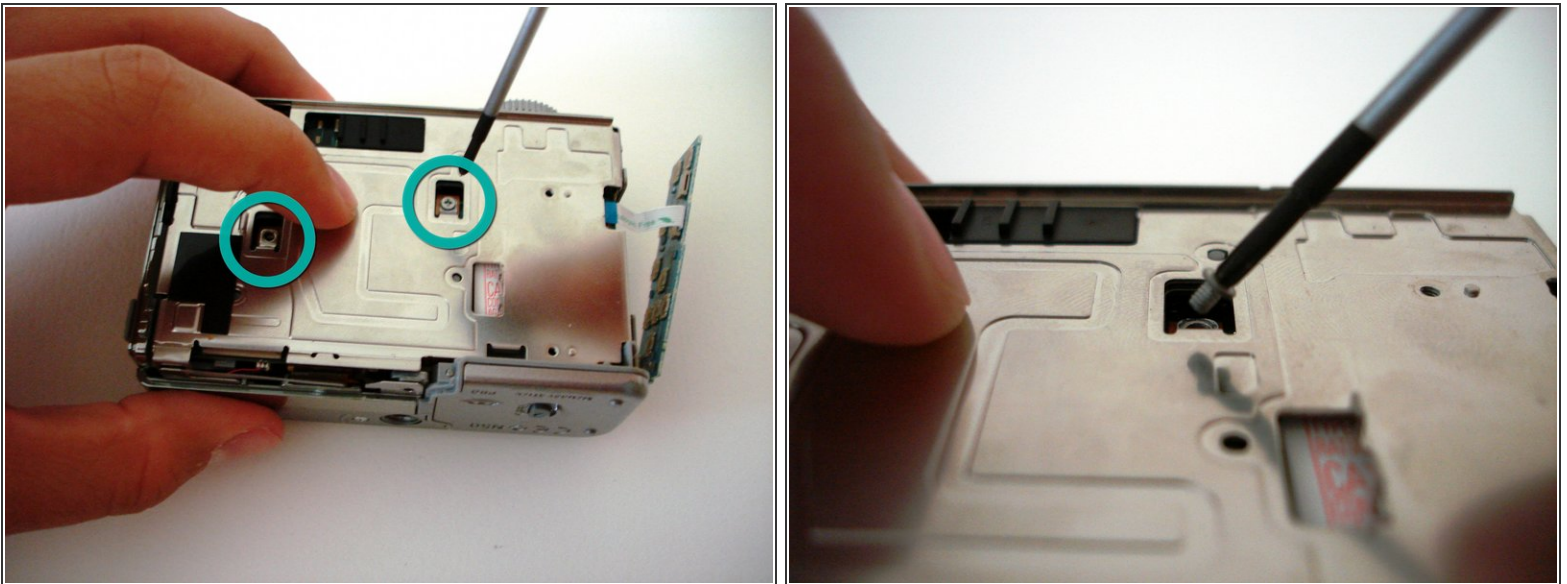
- The LCD screen sits in two slots; one on the bottom, and one on the left edge.
- Slide LCD screen from the two slots.
- ⚠ Do not attempt to completely remove the screen, as it is still attached to the camera.

Step 7



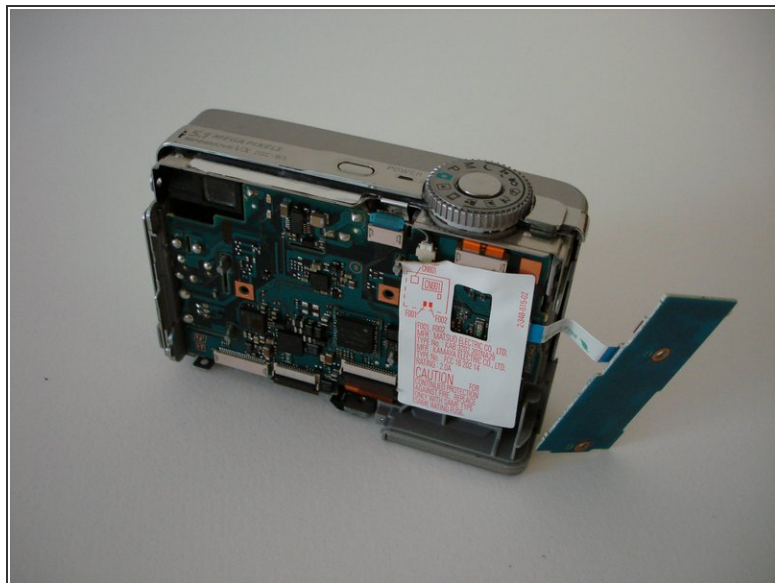
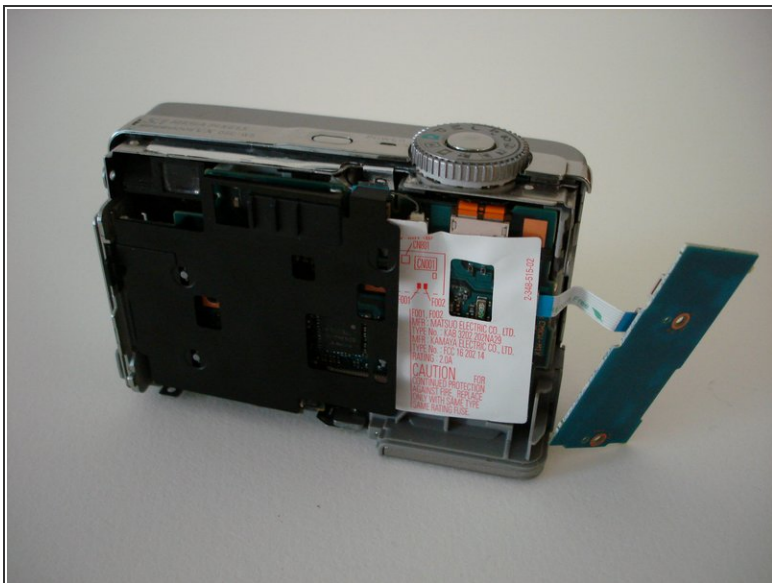
- To remove the LCD screen, detach the orange cable from the board.
- If needed, replace the LCD screen.

Step 8 — Speaker



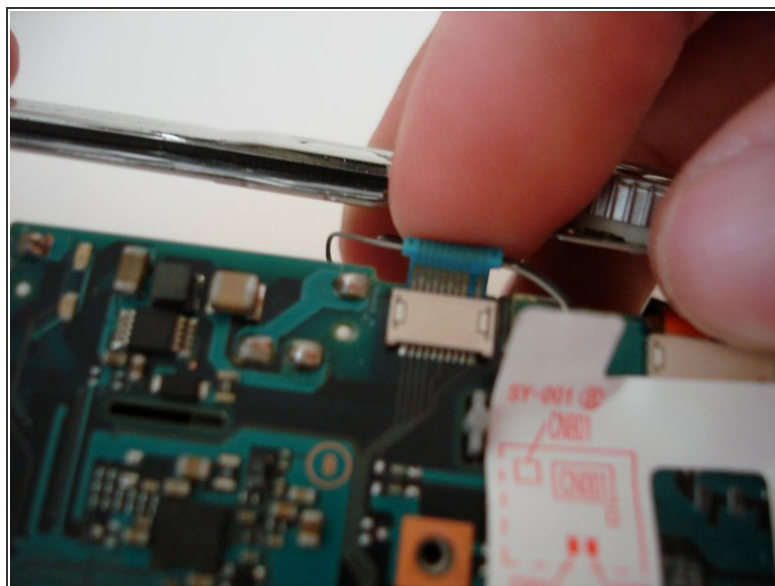
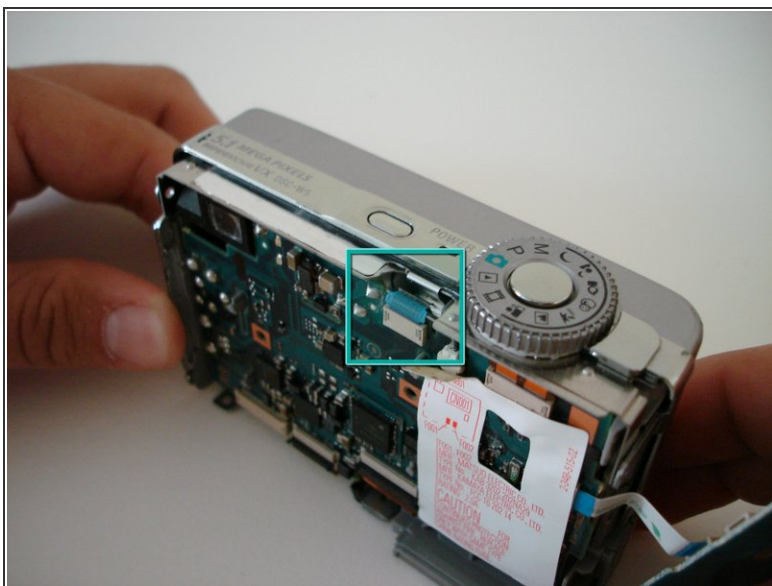
- Remove the two screws holding down the steel back plate.
- Remove steel back plate.

Step 9



- Now remove the plastic plate that covers the motherboard.

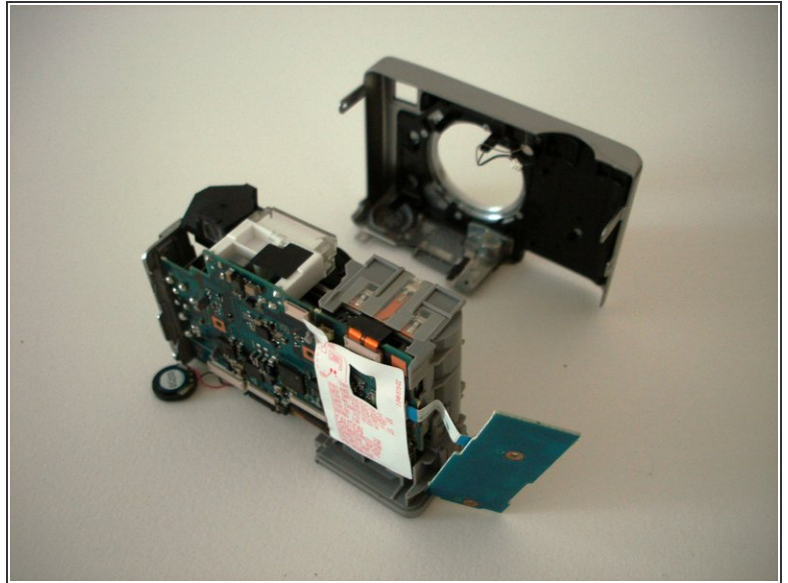
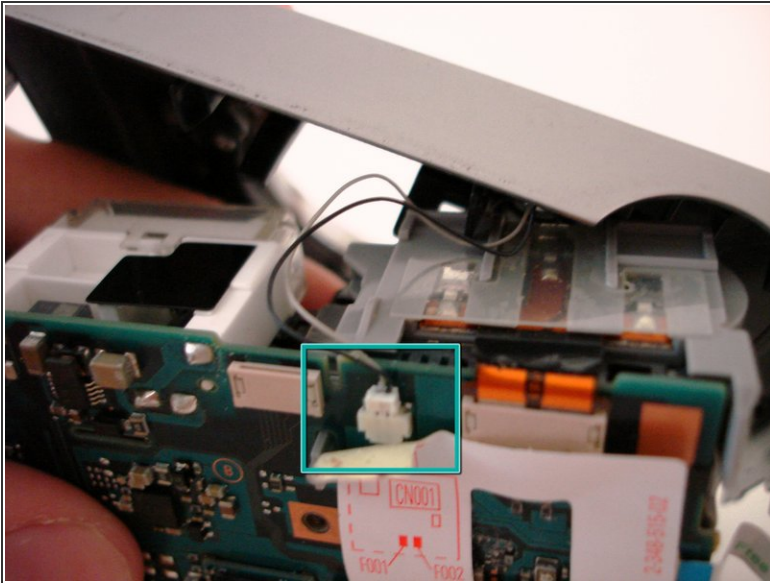
Step 10



⚠ Warning: Electric Shock From this point on, hold the camera by the chrome edges **ONLY**. Capacitors store electric charge even if the batteries are removed.

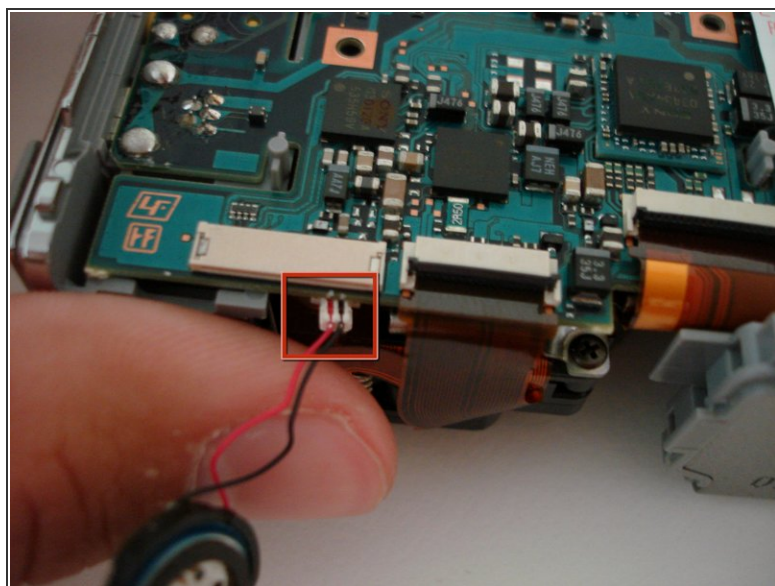
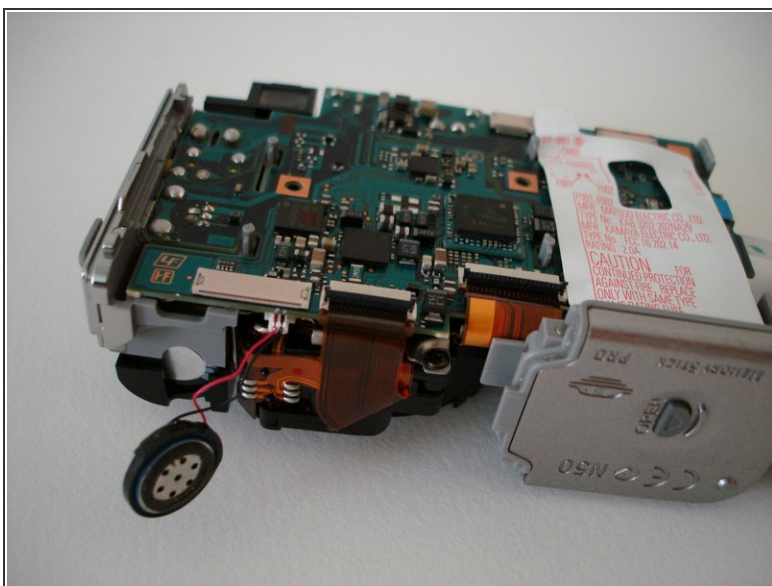
- Remove the blue cable.

Step 11



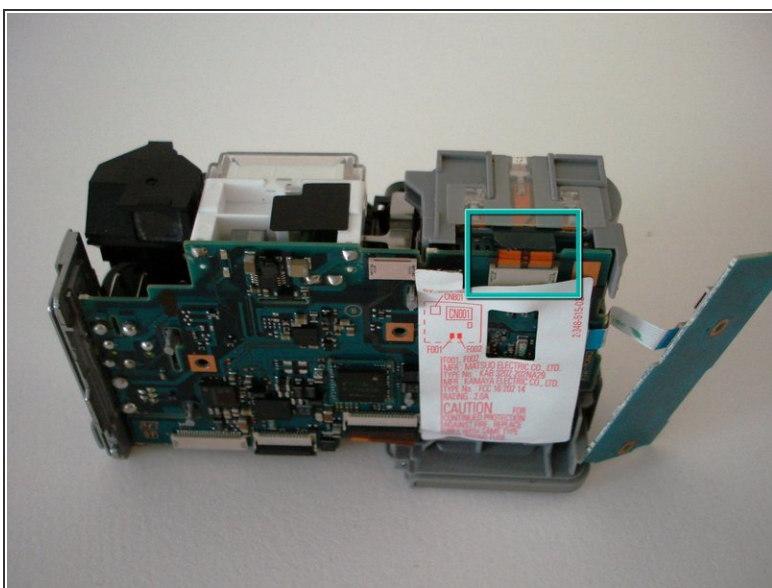
- Disconnect the flash cable (black and white wires) before completely removing the front case.
- Gently start to remove the case.
- Once the cable is free, set aside the front case.

Step 12



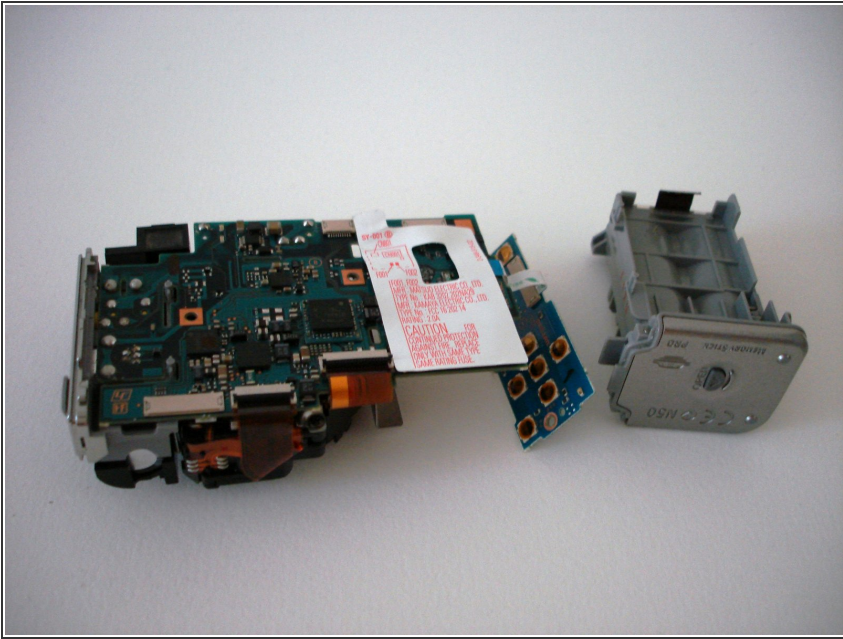
- The speaker should now be clearly seen on the underside of the camera.
- Gently unplug the speaker from the motherboard.
- Replace the speaker.

Step 13 — Battery Terminal



- Remove the orange cable connecting the battery terminal to the motherboard.

Step 14



- The battery terminal is now free from the board and can be slid out.

To reassemble your device, follow these instructions in reverse order.