



# Canon PowerShot SD450 Outer Case replacement

You need to remove the casing before you can...

Written By: Curtis Wagner



# INTRODUCTION

You need to remove the casing before you can start getting into any internal parts of the Camera. This can also be a good start to helping the camera dry out in case of a water accident.

---

## TOOLS:


Phillips #00 Screwdriver (1)

Spudger (1)

---

## Step 1 — Casing



 Remove the battery and SD Card from their slots. Leaving these in could cause the battery to ground and ruin the electronics.

- Unscrew the six screws on the casing. Two are on the bottom as pictured; two more are on each side of the camera.

## Step 2



- Pull the lanyard mount off of the camera using a spudger or your fingers.

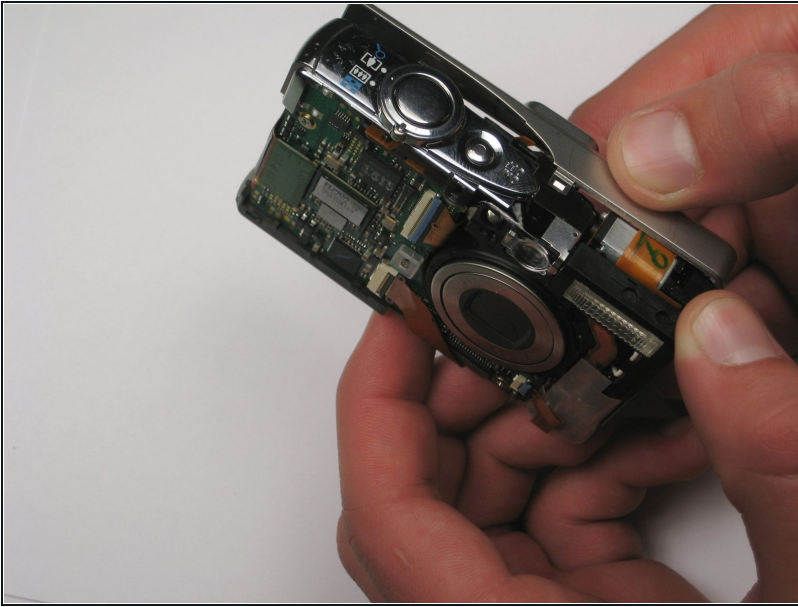
## Step 3



- Find the line that separates the casing into its two halves. Hold each half separately, and gently pull apart.
- Note that there is a small metal clip holding the two halves together. It might help to press down on the back half (indicated) while pulling upward slightly on the front half.



## Step 4



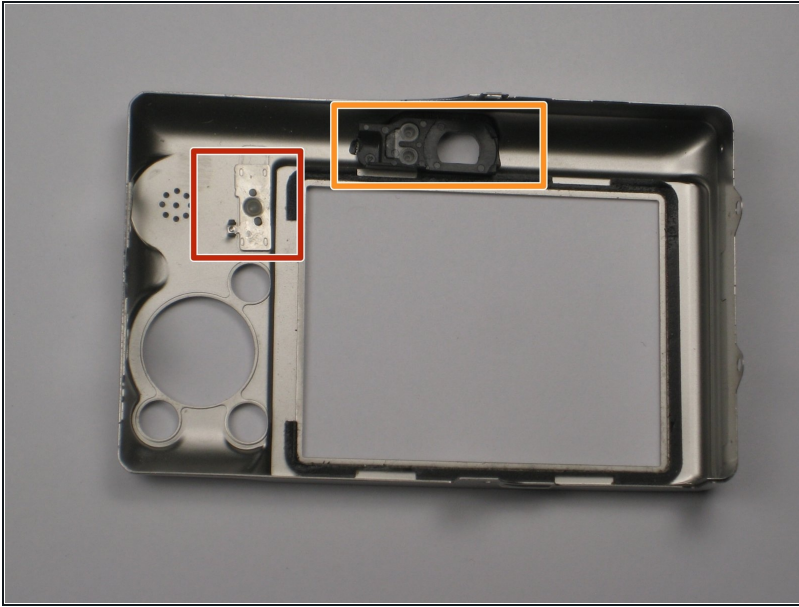
- Take hold of the inside of the camera, and gently pull away from the back casing.

## Step 5



- Remove the square, clear, rubber protector from the front of the logic board. This is not necessary to remove, but can easily fall off and get lost during later steps.

## Step 6



- When you reassemble the camera, make sure the switch on the casing matches the position of the switch on the camera internals.
- The black viewfinder padding can easily fall off the casing. Make sure you don't lose it when moving around parts.

---

To reassemble your device, follow these instructions in reverse order.