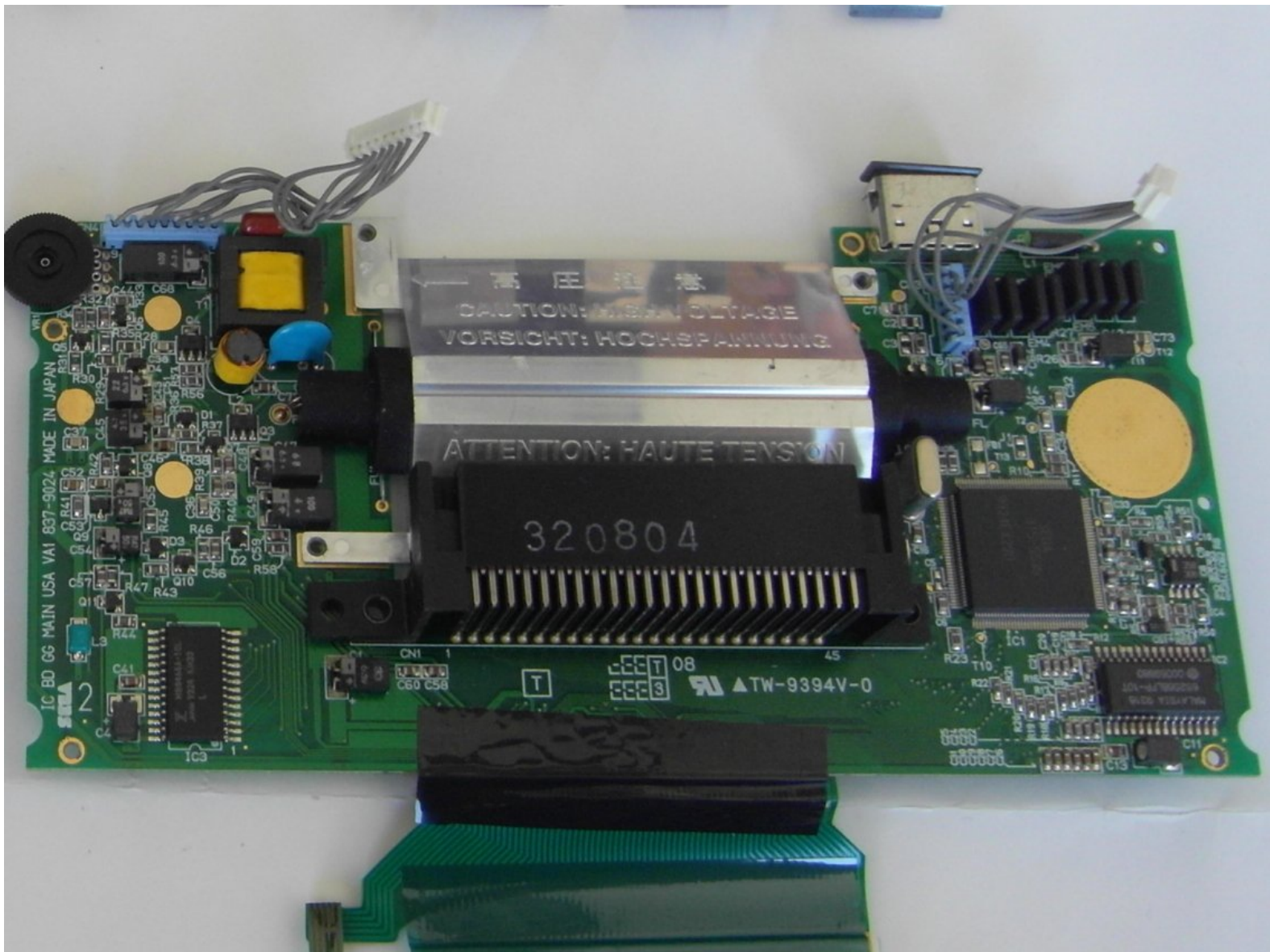




# Sega Game Gear Motherboard Replacement

Use this guide to install a replacement motherboard.

Written By: Brandon Page



---

# INTRODUCTION

A complete guide to replacing the main board.

---



## TOOLS:

- [Gamebit 4.5mm](#) (1)

*Bit available in the 64 bit kit*

- [Phillips #00 Screwdriver](#) (1)
-

## Step 1 — Battery



- Place your device upside down and locate the two battery compartments.

## Step 2



- Press on the tabs at the bottom of the battery covers then lift up to remove.
- Remove batteries if they are present.

## Step 3 — Case



- Remove the following screws:
  - Six Phillips screws
  - One 4.5 mm Gamebit screw

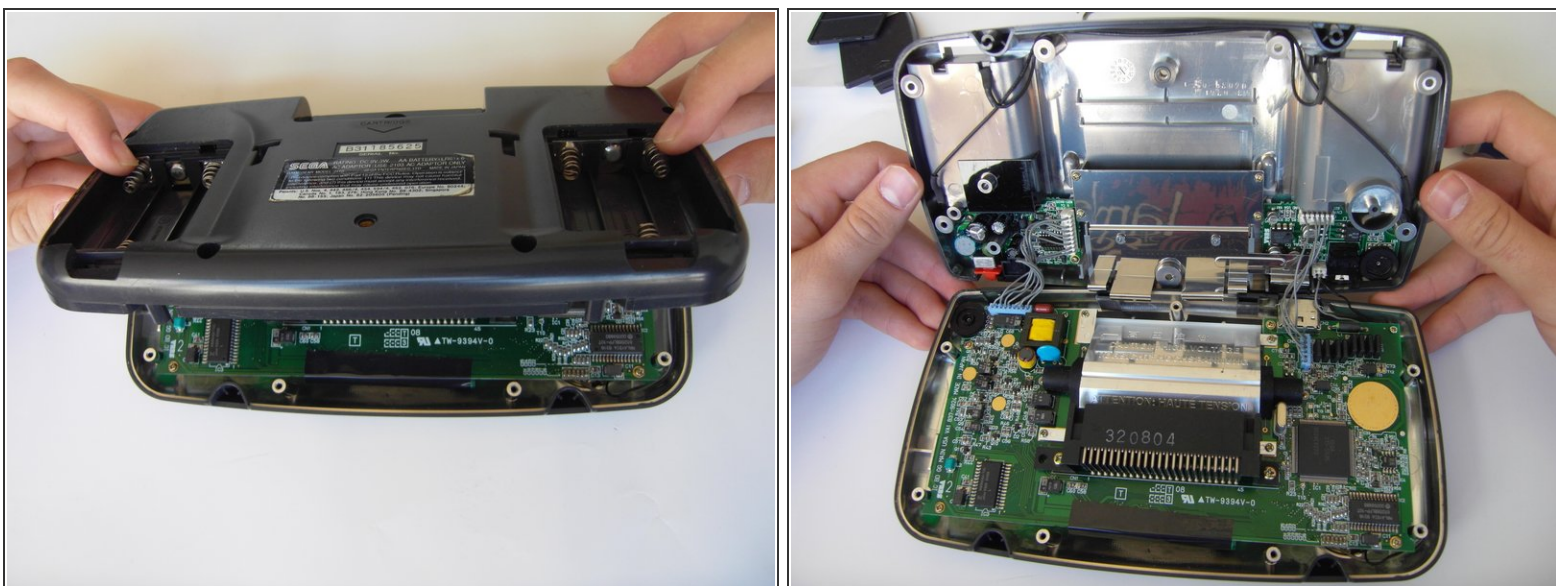
## Step 4



- Use tweezers to take all other screws out.



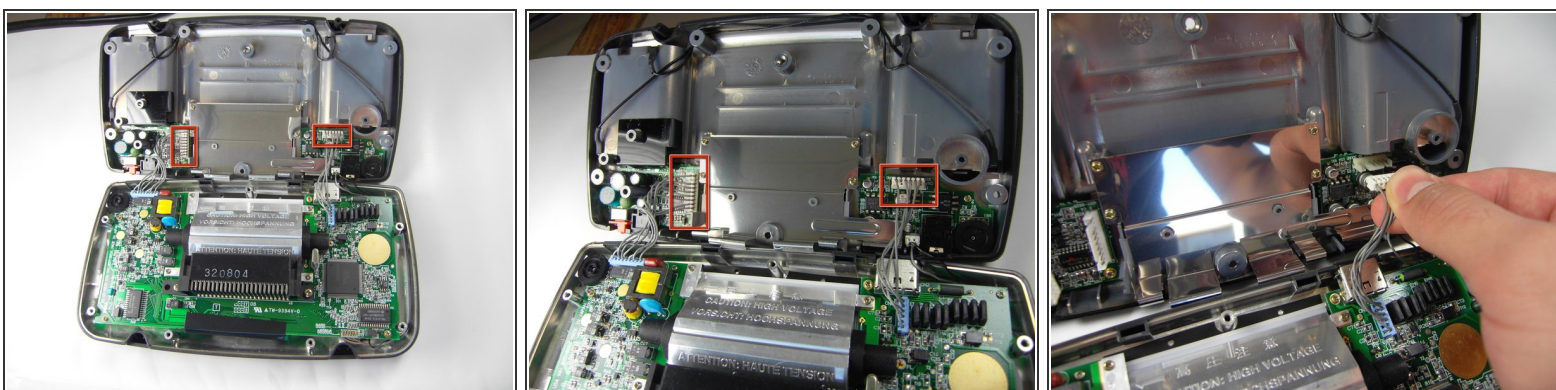
## Step 5



- Gently open the case by unfolding it over the top of the Sega Game Gear.

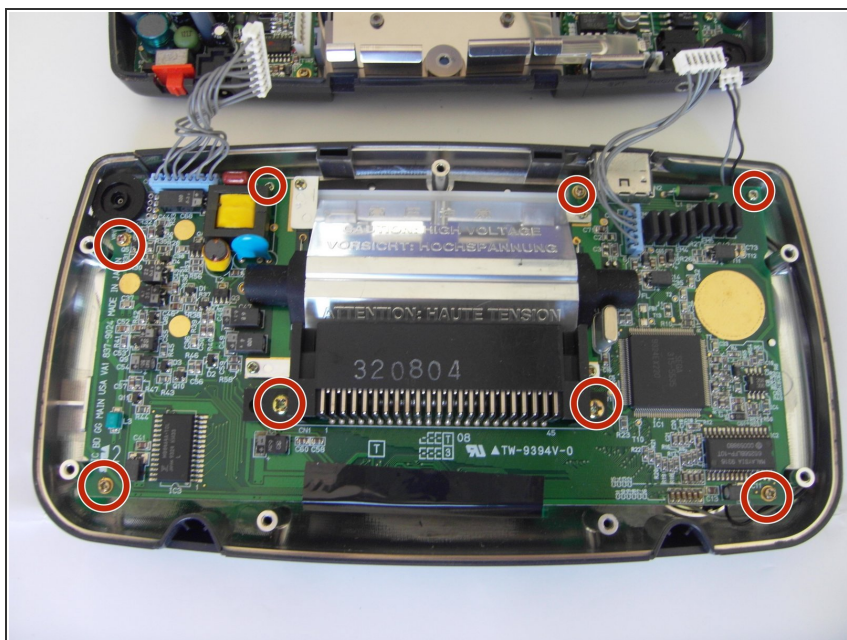
⚠ Do not pull the back of the case away, as cables are connected between both sides.

## Step 6



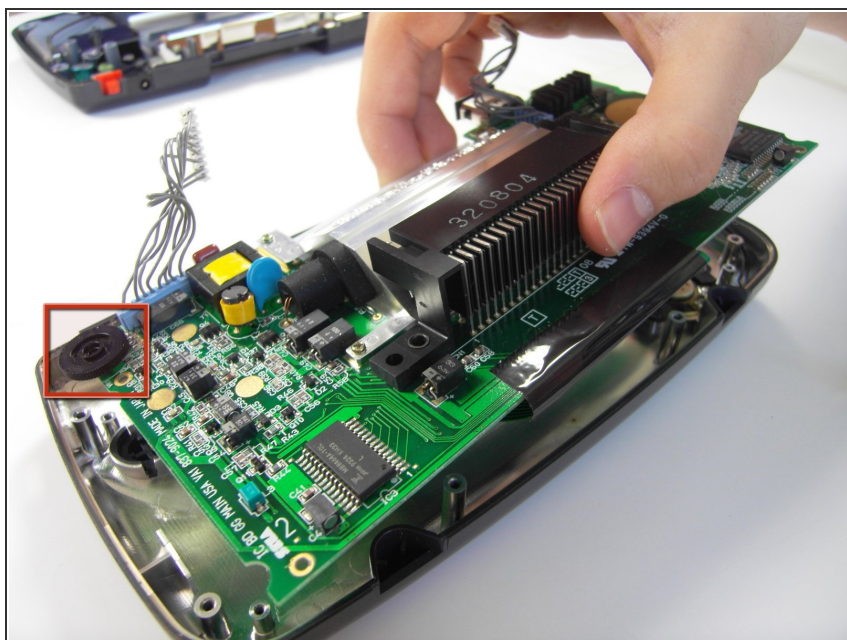
- Carefully unplug the 2 white-tipped connectors on the top cover.

## Step 7 — Motherboard



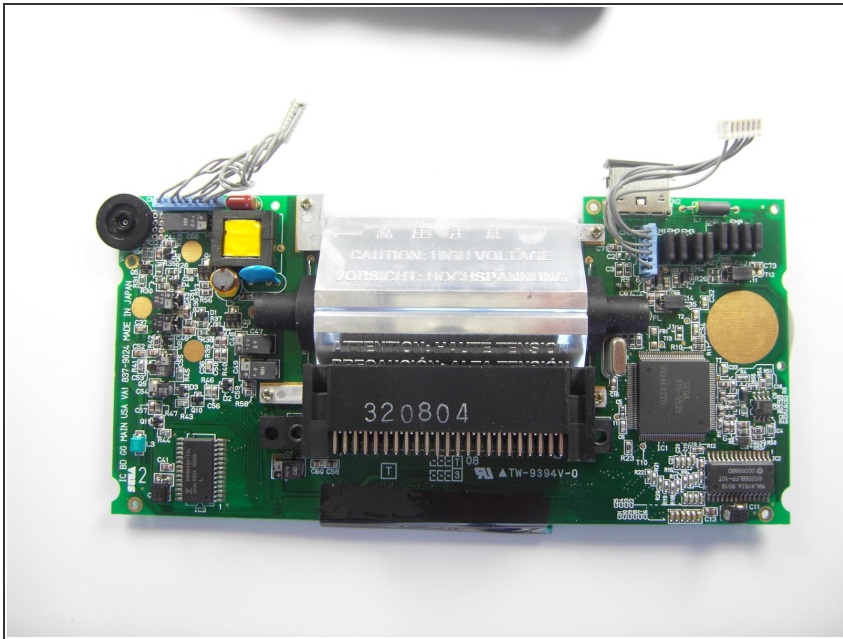
- Unscrew all the marked screws.

## Step 8



- Slide the logic board out from under the circular black fastener at the top-left corner of the case.

## Step 9



- Place the logic board on a flat surface.

To reassemble your device, follow these instructions in reverse order.