



N-Strike Nite Finder EX-3 Battery Replacement

This guide details how to replace the batteries in the blaster.

Written By: Nicholas Samokyszyn



INTRODUCTION

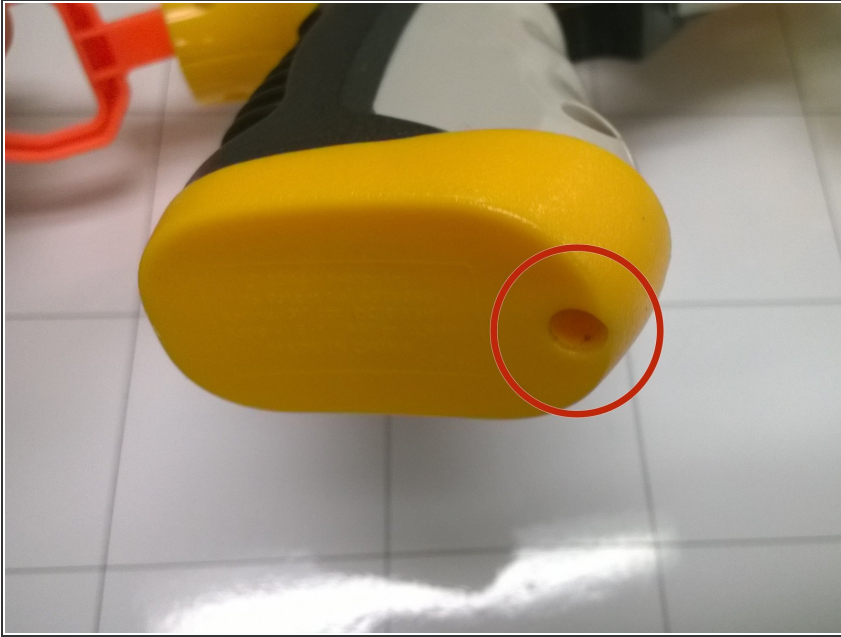
Batteries power the laser. If the laser is not working, one of the reasons might be the batteries. Follow the steps in this guide to correctly replace the batteries.



TOOLS:

- [Phillips #1 Screwdriver](#) (1)
-

Step 1 — Battery



- The batteries are located in the handle of the blaster.
- The base plate is held in place with a single phillips head, 8.2 mm screw. Remove this screw and remove the base plate to access the battery compartment.

Step 2



- Once the batteries have been removed, you can check to see if they have any charge left in them with a battery tester.
- If they are in fact dead, replace them with standard AA type batteries in the correct orientation.

To reassemble your device, follow these instructions in reverse order.