



# iPad 3G Teardown

Written By: Walter Galan



---

## INTRODUCTION

While the rest of the world awaits in awe for the unveiling of the iPad, we've got our hands on the newly released iPad 3G.

Want to stay up-to-date with the hardware world? Follow [@ifixit!](#)

---

### TOOLS:

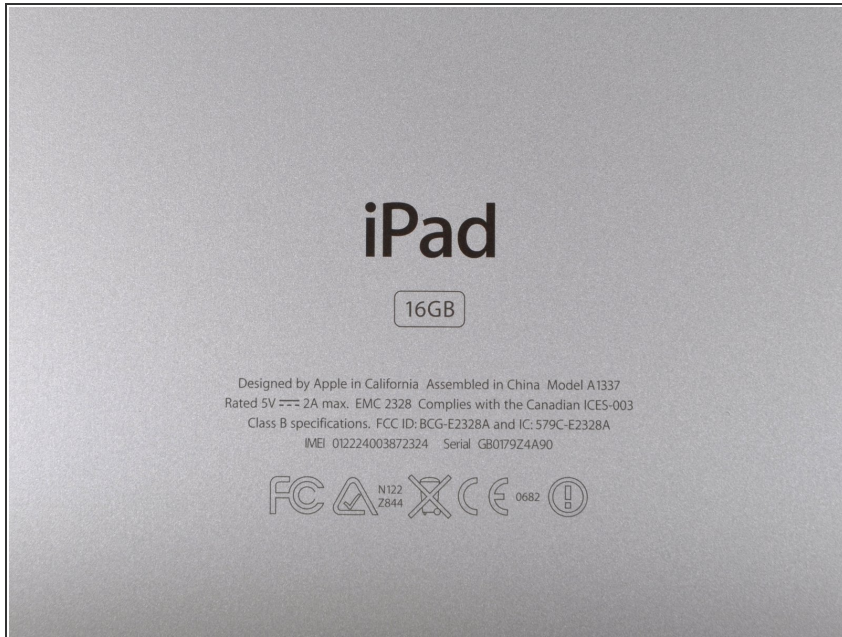
- [Metal Spudger](#) (1)
  - [Phillips #000 Screwdriver](#) (1)
  - [iFixit Opening Tools](#) (1)
  - [Spudger](#) (1)
-

## Step 1 — iPad 3G Teardown



- The much awaited iPad 3G is finally in the hands of iFixit!
- The Wi-Fi + 3G iPad. We got a [sneak peak of the internals](#) of this tablet a month ago by poking around on the FCC's database.
- The 3G iPad is visually distinguished from its Wi-Fi-only sibling by a black plastic RF window.
- The 3G iPad supports UMTS/HSDPA on 850, 1900, and 2100 MHz and GSM/EDGE on 850, 900, 1800, and 1900 MHz.
- In a dramatic shift for Apple, the iPad is unlocked, and not tied down to a specific carrier.
- Alas, in the US, AT&T is the only carrier that operates 3G on frequencies the iPad supports. T-Mobile should work, but only on the slower EDGE network.

## Step 2



- The iPad's model number is A1337 as previously suggested by the [FCC filing](#). Yes, we think that's [i33t](#).
- There's no use wasting anymore time, let's see what makes this puppy growl.
- We'll be comparing the internals of this production unit to the preproduction FCC photos we exclusively unveiled [a month ago](#).

## Step 3



- After some careful prying around with a [metal spudger](#), the display assembly can be removed from the rear case.
- ⚠ Due to the addition of 3G connectivity, there's an extra antenna cable that must be disconnected before the two halves are free.

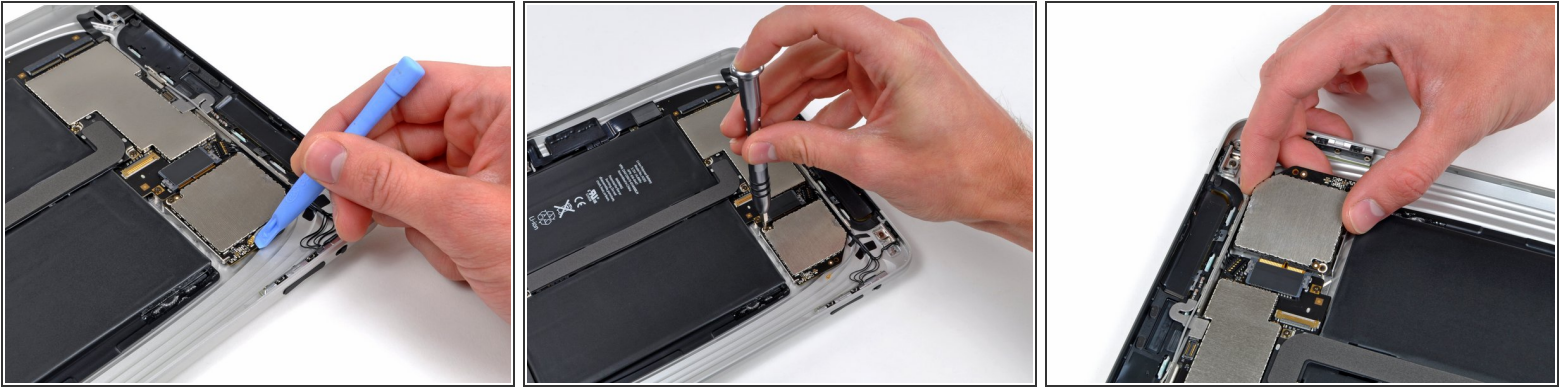
## Step 4



- The innards of the iPad 3G (left) and the iPad Wi-Fi (right).
- Some major differences include the 3G chip, SIM card board, and the plastic antenna cover at the top of the case.
- The 3G iPad is not nearly as barren as the Wi-Fi-only iPad, but it's still not jam-packed.



## Step 5



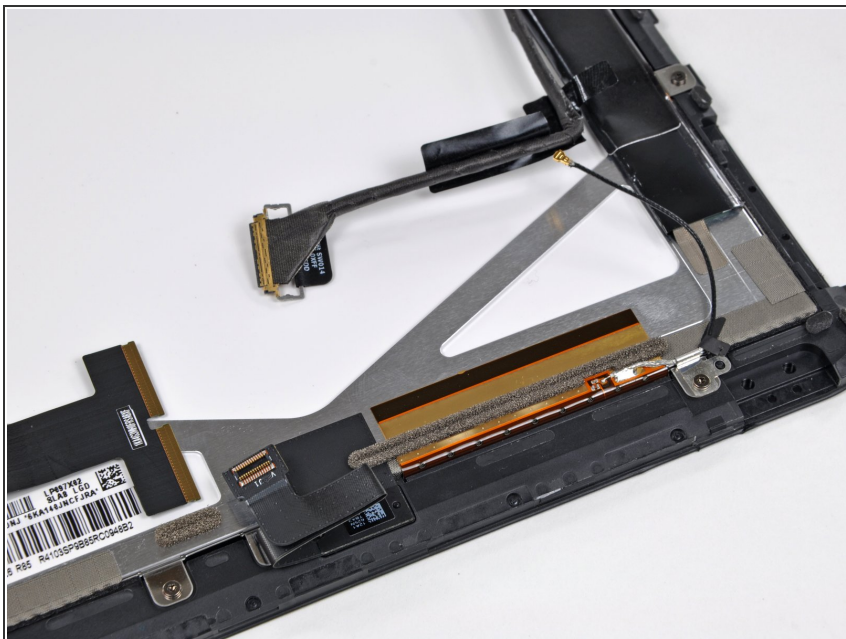
- Pry up the antenna on the communications board with a [plastic opening tool](#). This is one of two antennas on the communications board.
- The communications board is secured by T4 Torx screws.
- Upon removing the screws, the communications board slides out of its socket on the logic board. The connection socket style is similar to a Mini PCI Express card.

## Step 6



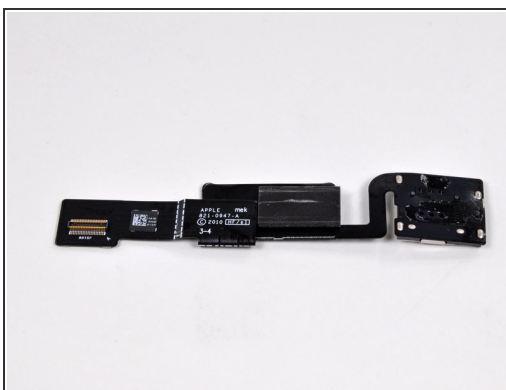
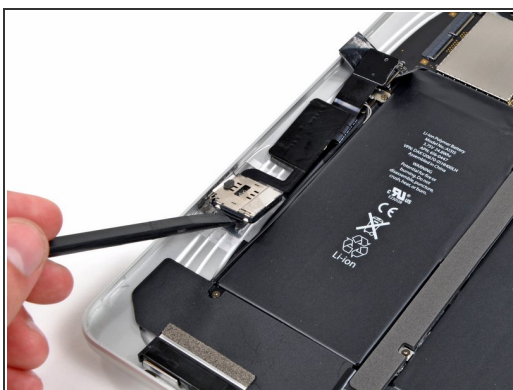
- Removing the micro-SIM card. That's a really small SIM card!
- The iPad's SIM card measures 12mm x 15mm. That's just under half the size of the standard size SIM card from an iPhone 3GS.
- You could cut up a full-size SIM card and turn it into a Micro-SIM. The contacts are fully compatible.

## Step 7



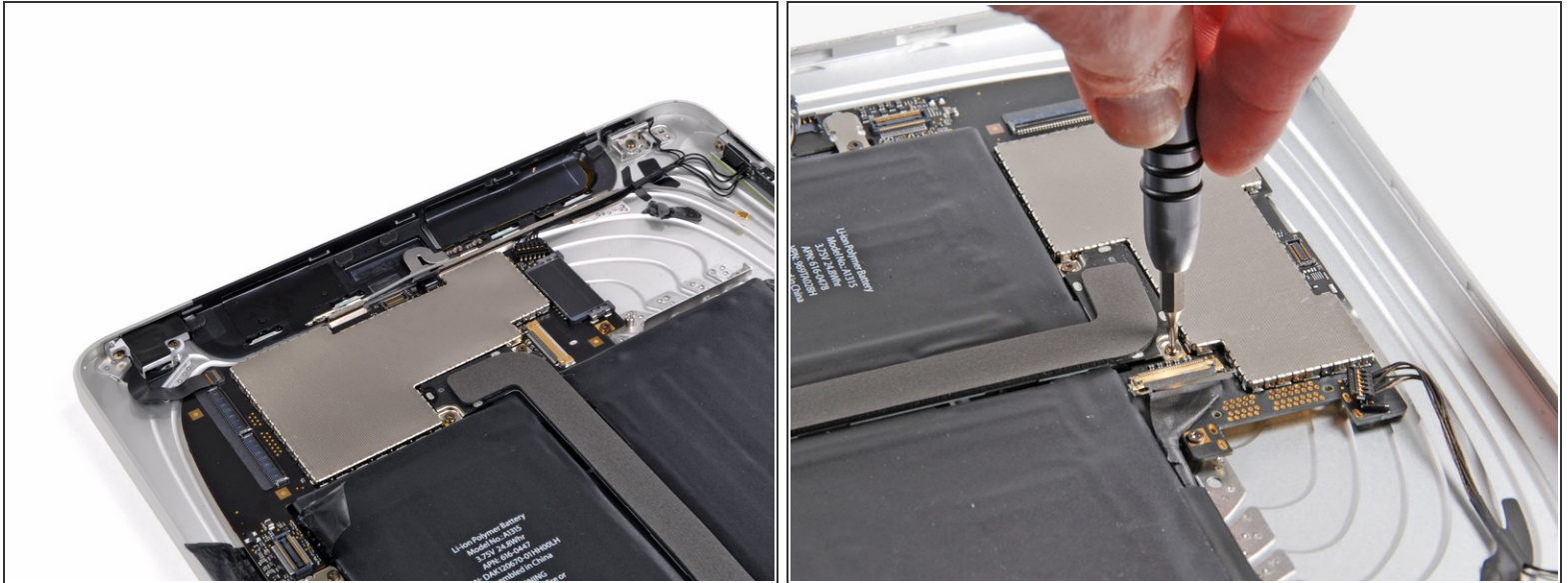
- New to the 3G iPad, there's an antenna attached to the backside of the display assembly. The copper foil piece seen in the picture connects to the silver metal LCD frame. Apple has cleverly used this same piece of metal for both structural and electrical purposes.

## Step 8



- Use the flat end of a spudger to pry the SIM card slot off the rear case.
- It sure doesn't look like Apple was tight on space. As far as we know, the only purpose of this board is to connect the SIM card to the logic board.

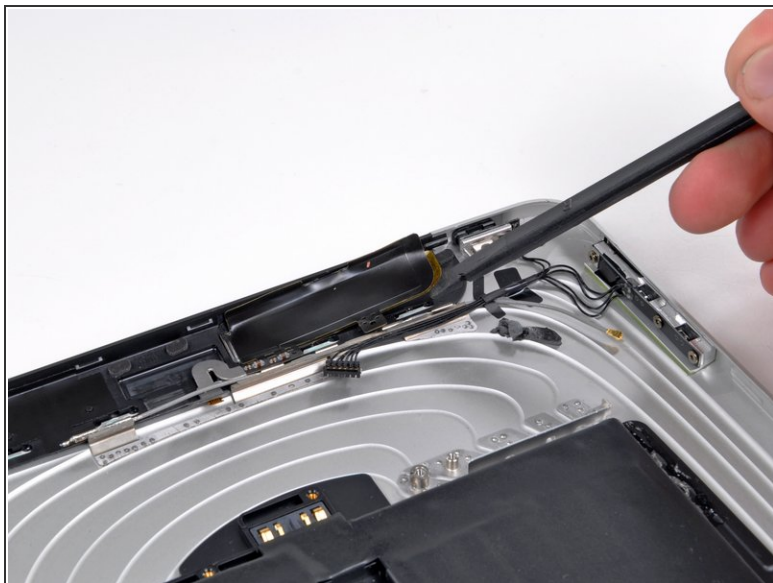
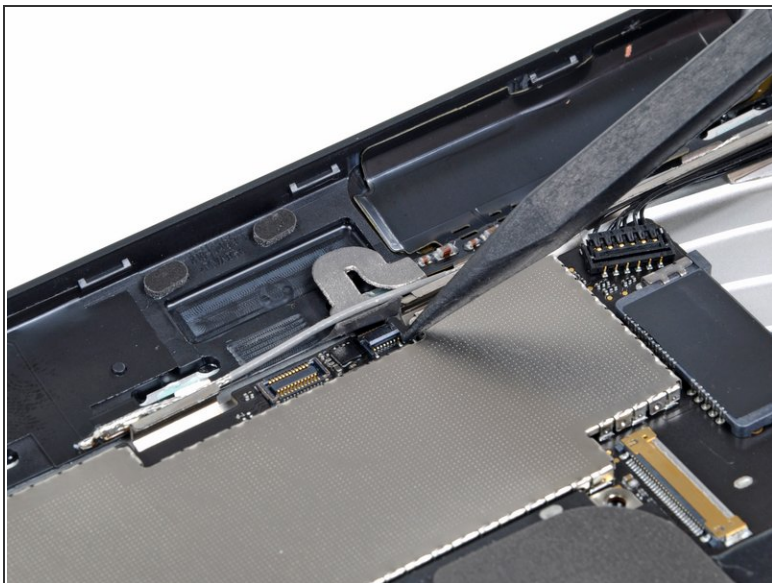
## Step 9



- Comparison between the iPad 3G's (left) and the iPad Wi-Fi's (right) logic board.
- When comparing the two models, the top half of the Wi-Fi's rear case has copious amounts of open space.

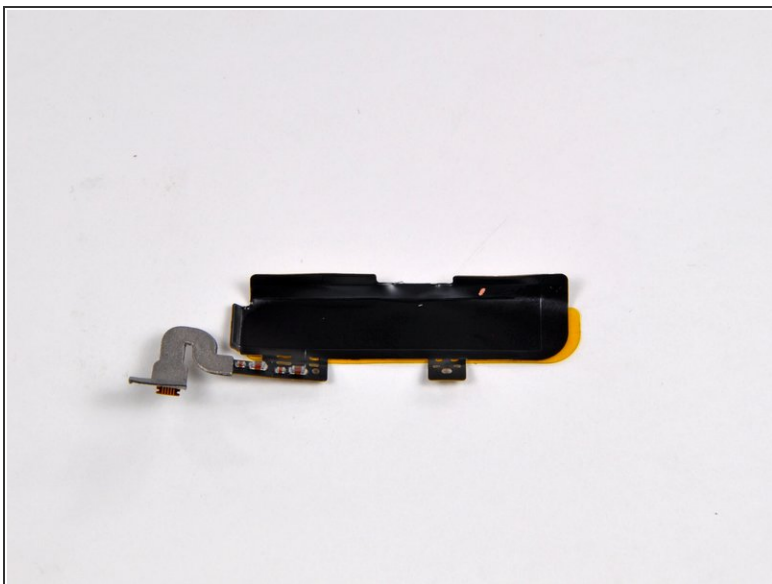


## Step 10



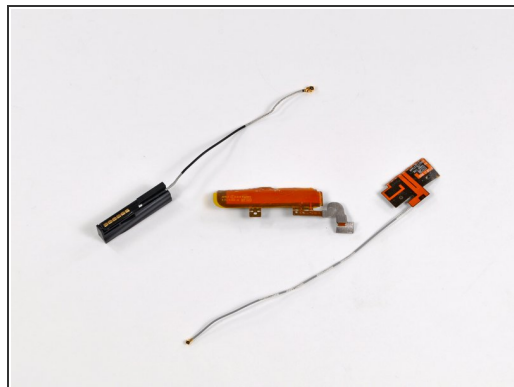
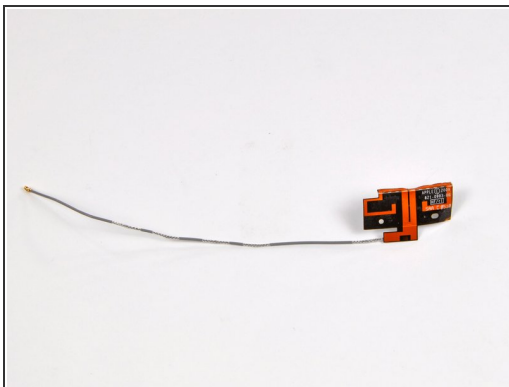
- Use the tip of a spudger to disconnect the GPS antenna ZIF cable connector.
- The GPS antenna assembly can be pried off the plastic antenna cover with the flat end of a spudger.

## Step 11



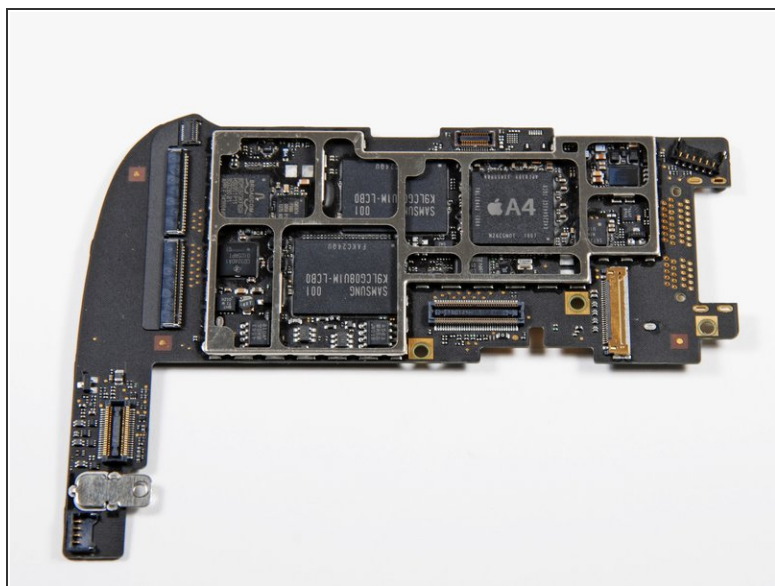
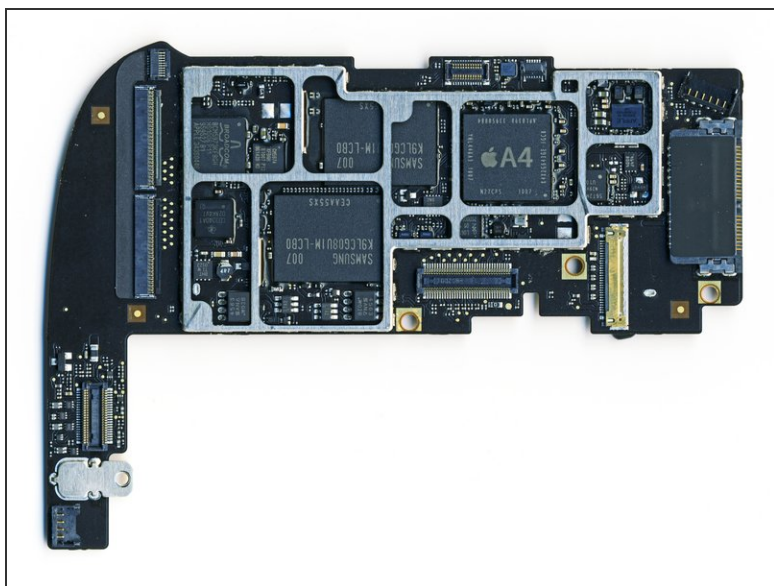
- The front and back of the GPS antenna assembly.

## Step 12



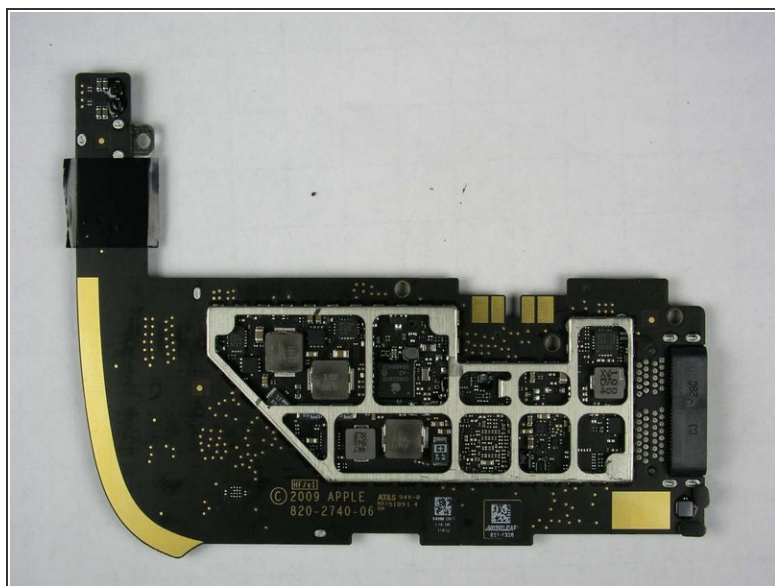
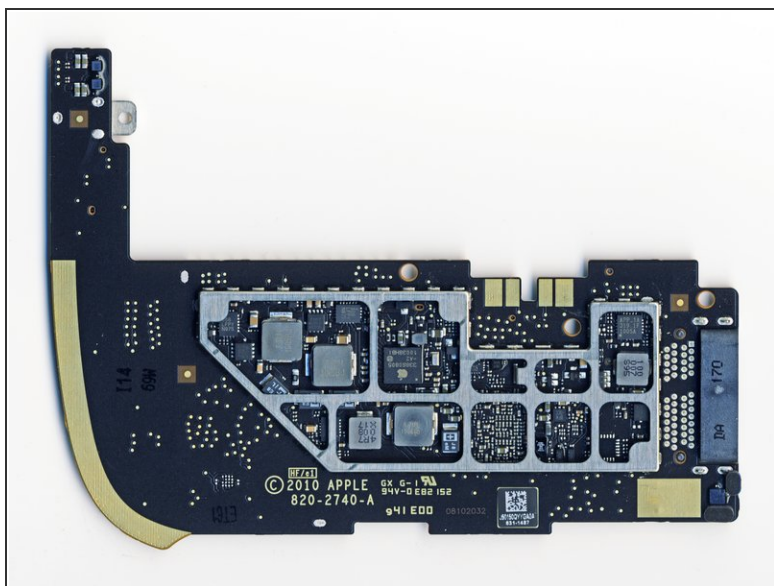
- Lift the cellular antenna from its housing.
- The cellular antenna remains.
- From left to right: the Wi-Fi/Bluetooth, GPS, and 3G antennas, respectively.

## Step 13



- The 3G board with A4 processor.
- The second shot is the main board from the Wi-Fi iPad.
- Key differences?
  - The most obvious change is the addition of the connector on the right side of the board for the communications board.
  - More subtle is an additional small IC above the A4 chip next to the connector for the GPS antenna. This may be a signal processor, but we can't firmly identify it: T3J 927 632567.

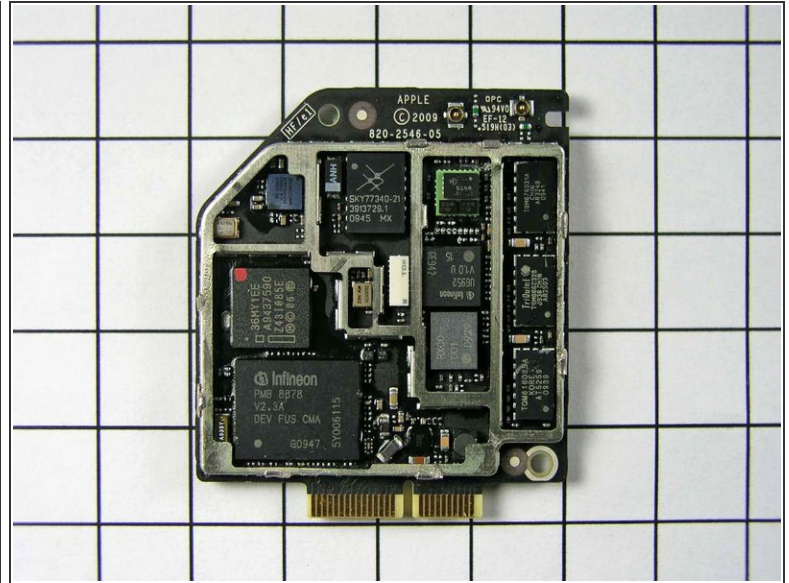
## Step 14



- Bottom of the main board.
- Nothing much to see here, it's exactly the same as the Wi-Fi board.

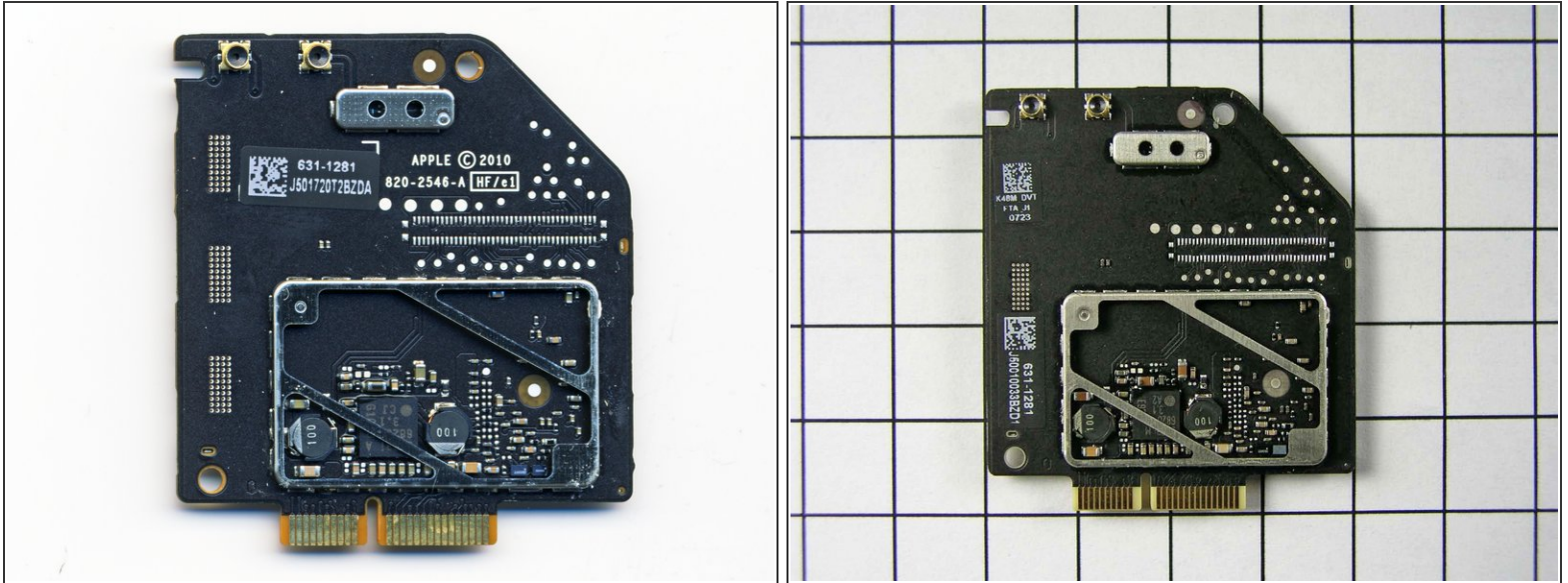


## Step 15



- Apple soldered the EMI shield onto the communications board, making it challenging for us to show you the chips. Despite this adversity, we pressed forward undaunted, fearlessly unsoldering the board to reveal to you:
- Infineon 337S3754 [PMB 8878 X-Gold baseband IC](#) 5Y06115. This part had the Infineon logo in the pre-production unit, but Apple has white-labeled it to obscure the manufacturer. This is the exact same baseband processor as the iPhone 3GS.
- Skyworks [SKY77340](#) Power Amplifier Module
- Three Triquint power amplifier / filters.
- Infineon [U6952](#)
- Numonyx 36MY1EE
- Along the right are three TriQuint power amplifiers: TQM616035A, TQM666032B, and TQM676031A. These are the same three chips that Apple used in the [iPhone 3G nearly 2 years ago](#).
- Broadcom A-GPS [BCM47501UBG](#) F01003 P11 949871 SN

## Step 16



- Bottom of communications board.
- The second photo is from the pre-release FCC unit. The bottom of our board has additional part number markings, but is otherwise identical to the pre-production unit.
- It's important to note that the Broadcom A-GPS package is on the communications board, explaining why the Wi-Fi-only iPad does not have GPS.

## Step 17



- That wraps up this teardown of the iPad 3G.
- Don't forget to take a peek at its cousin, the [iPad Wi-Fi Teardown](#) for more iPad related mayhem.

To reassemble your device, follow these instructions in reverse order.