



Disassembling LG420G Entire phone

If you need to take apart the entire LG420G...

Written By: Anthony Aquino



INTRODUCTION

If you need to take apart the entire LG420G phone, follow this disassembly guide. You may need this guide to access internal components or investigate potential problems that are occurring with your phone.

Make sure that the phone is powered off before you begin. One thing to note is that some of the components are glued down at points of the disassembly so you may want to use an [iOpener](#) to loosen the glue and make the process easier.



TOOLS:

- [Tweezers](#) (1)
 - [Phillips #000 Screwdriver](#) (1)
 - [iFixit Opening Picks \(Set of 6\)](#) (1)
 - [Plastic Cards](#) (1)
-

Step 1 — Disassembling LG420G Entire phone



- Start with gathering tools needed

Step 2



- Start with the back of the phone (the battery and cover has already been taken out.)

Step 3



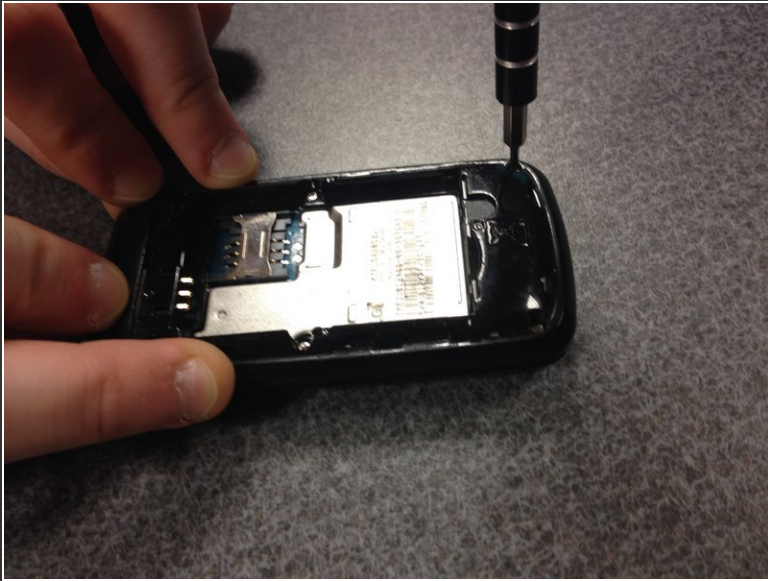
- Place finger to take out the sim card. Then take out sim card.

Step 4



- Locate Screws

Step 5



- Unscrew the six screws.

Step 6



- With tweezers, pry around the sides to expose the circuitry.

Step 7



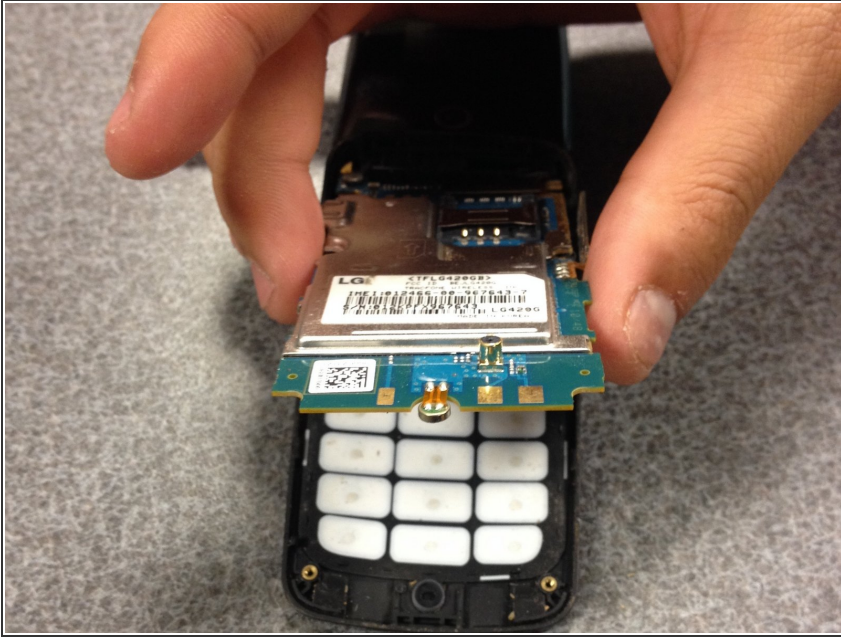
- Remove the back part of the phone to expose the layers inside.

Step 8



- Remove small parts from the sides.

Step 9



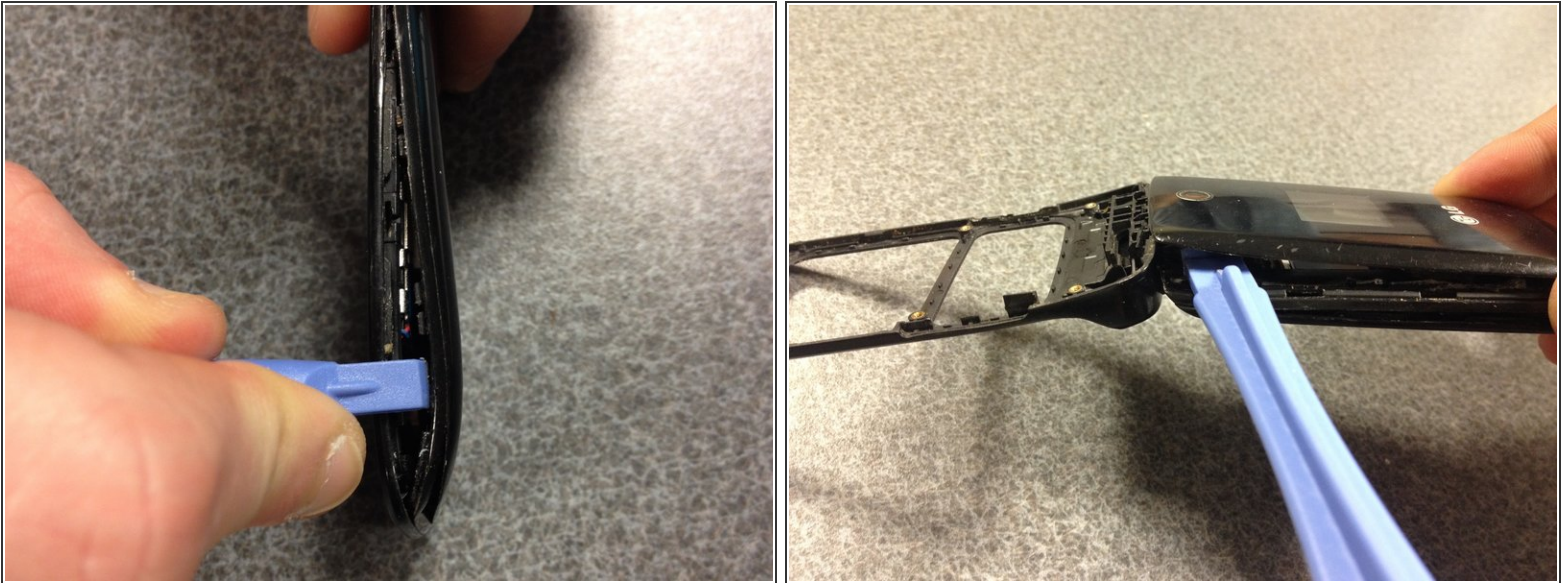
- Remove the layer connected with the keypad.

Step 10



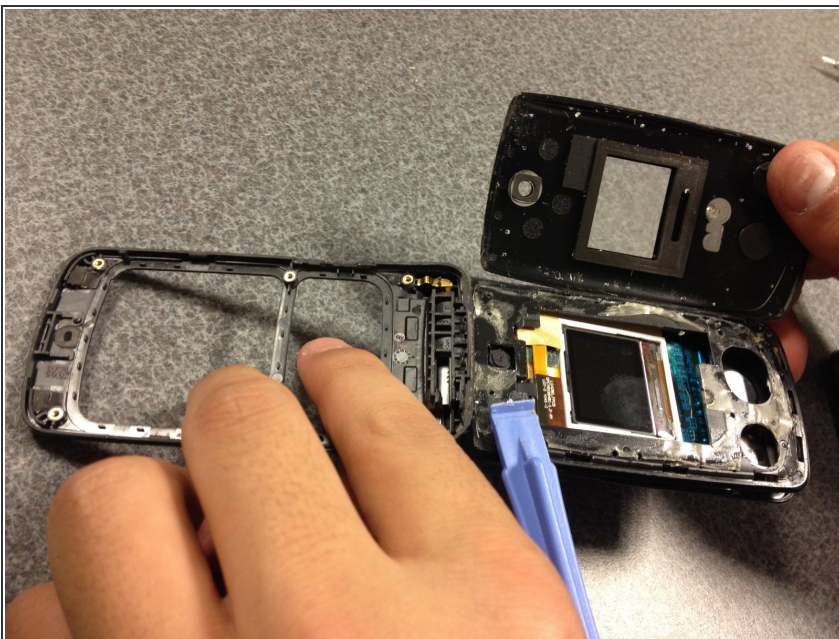
- Release the keypad from the phone frame.

Step 11



- With a prying tool, start opening the front face of the phone.

Step 12



- Remove the front cover, exposing the layers inside.

Step 13



- Pry open the glued layer.

Step 14



- Remove all loose part, and should result in the components shown in the picture.

To reassemble your device, follow these instructions in reverse order.