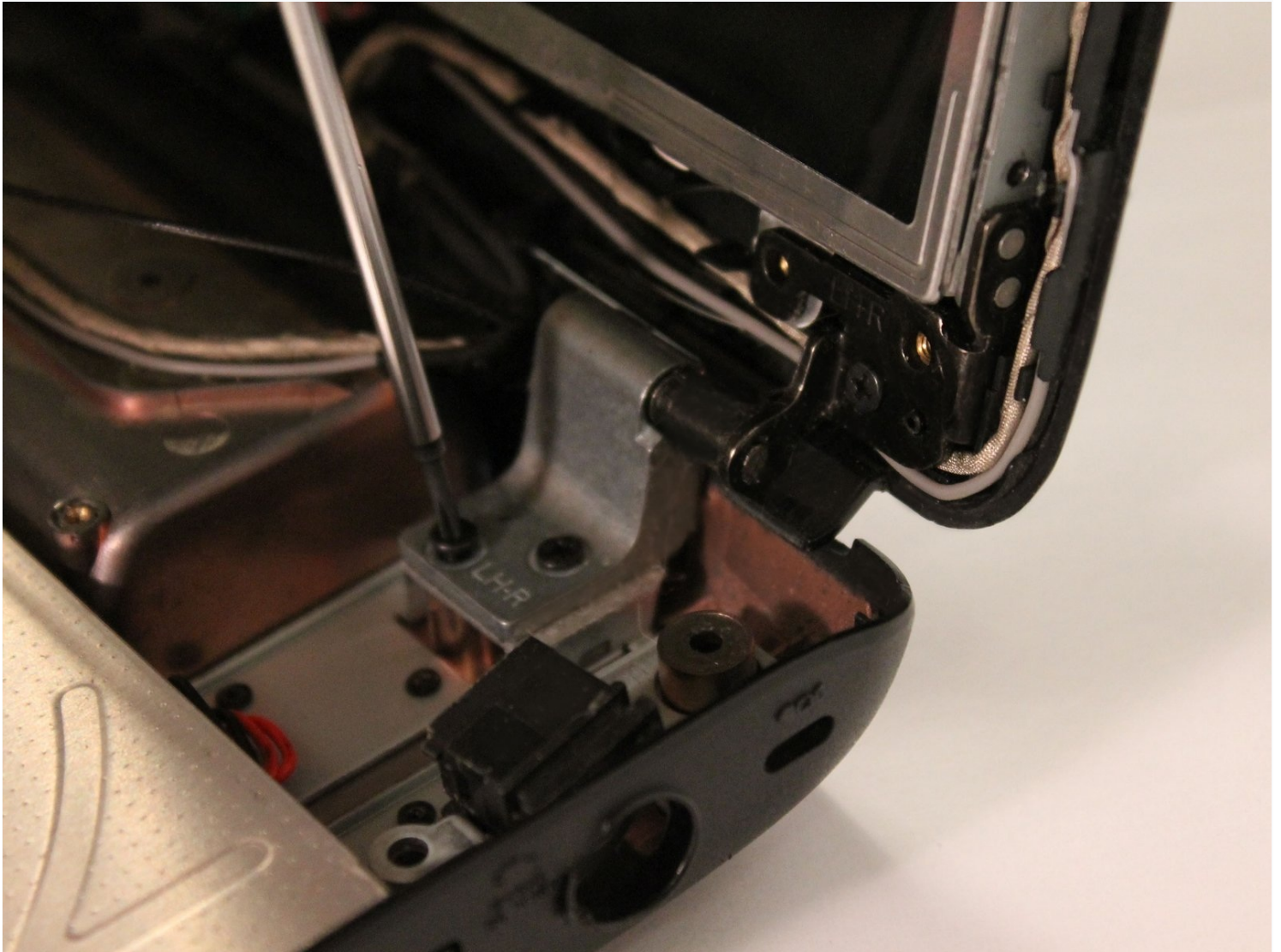




Toshiba Satellite L305-S5875 Hinge Replacement

If the hinges become loose from wear and tear...

Written By: Tyler



INTRODUCTION

If the hinges become loose from wear and tear or break, creating hassle when using the computer, on your Toshiba Satellite L305-S5875, this guide walks you through how to access and tighten, or replace as needed, the hinges on your Toshiba Satellite L305-S5875.

TOOLS:

Phillips #00 Screwdriver (1)

Step 1 — Keyboard



- Open the laptop so the keyboard is facing you.
- Using your fingers, remove the thin plastic cover above the keyboard.

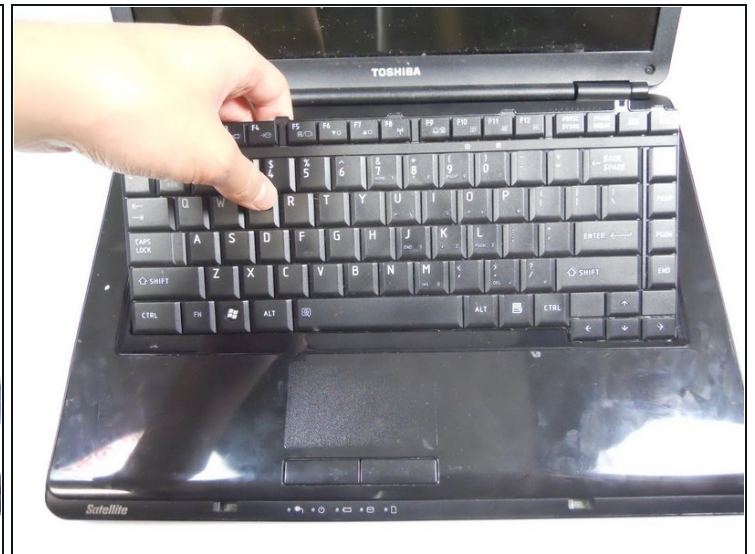
 Potential for device damage: Do not apply too much force when removing the cover piece as it can break.

Step 2



- Remove the two 4.8 mm screws from underneath the plastic cover piece using a Phillips #00 screwdriver.

Step 3



- Starting at the top, gently raise the keyboard enough to remove it from the socket.

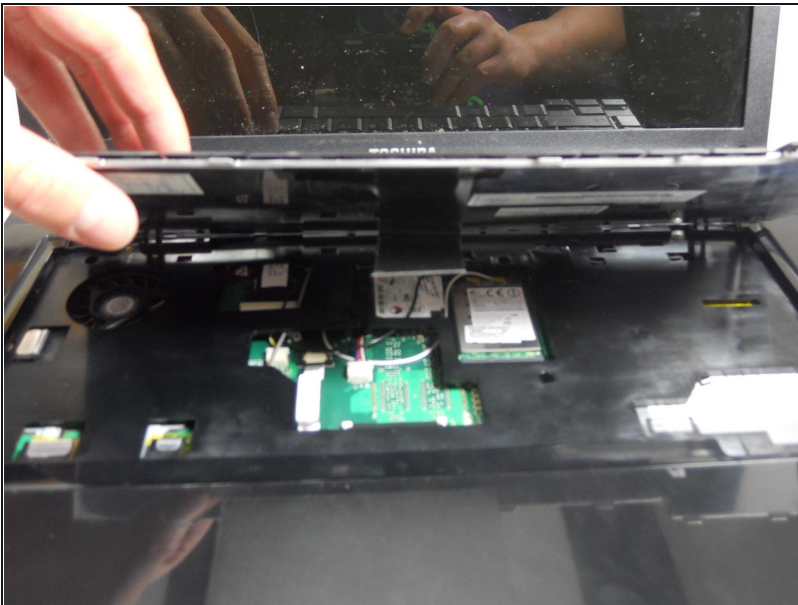
⚠ Potential for device damage: DO NOT pull out the keyboard after it's out of its socket. The keyboard is connected to the hard drive through a data cable and removing forcefully could damage the cable and laptop.

Step 4



- Locate the data cable that is connected to the motherboard.
- Pull the white ZIF connector towards the screen to remove it.
- Pull the black ribbon cable away from the screen.

Step 5



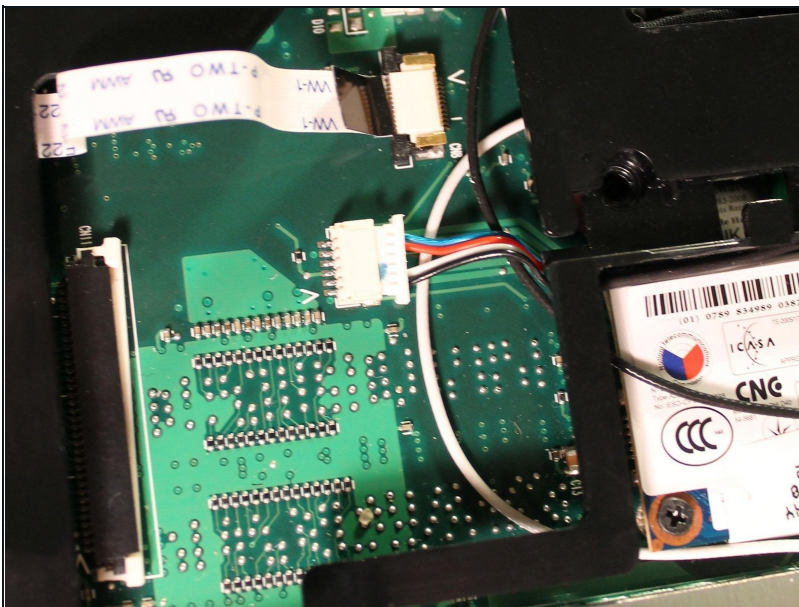
- With the black ribbon cable now disconnected, remove the keyboard from its housing.

Step 6 — Hinge



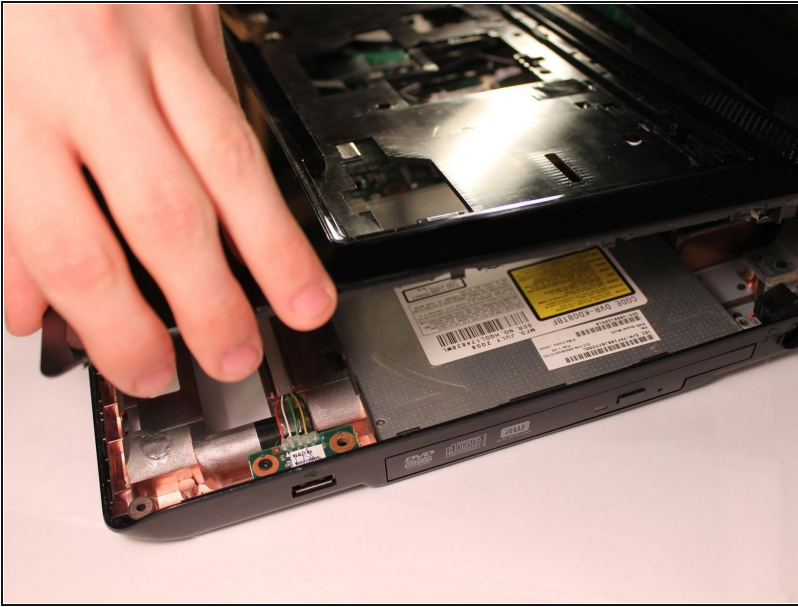
- Close your laptop and flip it over.
- Remove the 13 screws using a Phillips #00 screwdriver.

Step 7



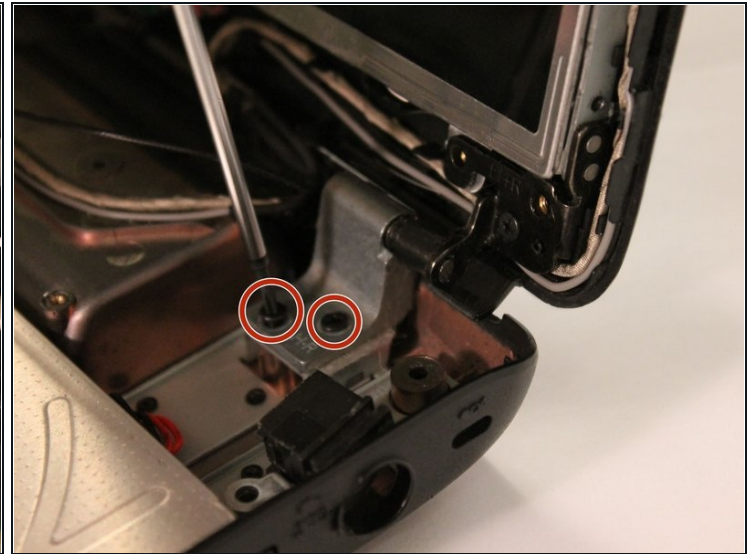
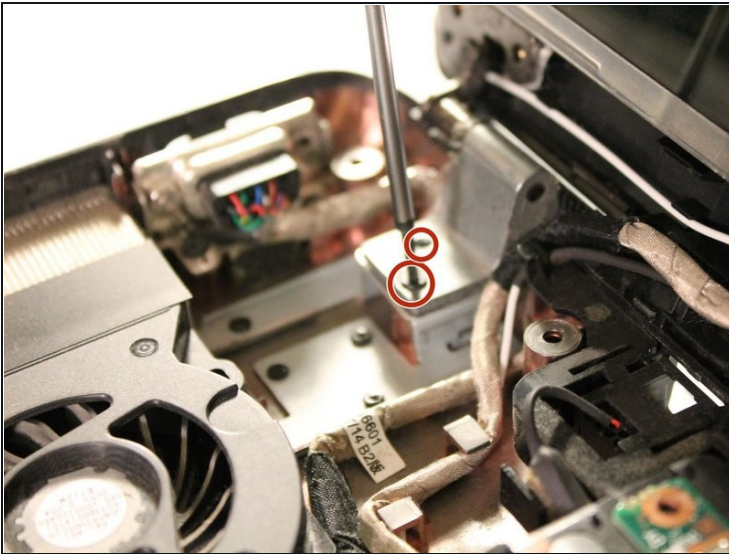
- Gently disconnect the ribbon cable.
- Gently disconnect the multicolored cable.

Step 8



- Gently pull the top case from the bottom case of the laptop.

Step 9



- Unscrew the two screws on the hinge. (Be careful to not damage nearby wires)
- ① Both hinges shown, but replacing both may not be necessary.
- Congratulations, you may now remove and replace your hinge!

To reassemble your device, follow these instructions in reverse order.

