



# Motorola V276 Motherboard Replacement

Replacing the Motorola V276 Motherboard.

Written By: Jonathan Cheung



---

# INTRODUCTION

Replacing the Motorola V276 Motherboard.



## TOOLS:

- [Spudger](#) (1)
  - [T6 Torx Screwdriver](#) (1)
  - [iFixit Opening Tools](#) (1)
-

## Step 1 — Battery



- Locate the silver button on the back of the phone, near the bottom.
- Depress the silver button with one hand and slide the back cover of the phone *away* from the antenna.
- ⓘ The back cover should slide off easily.

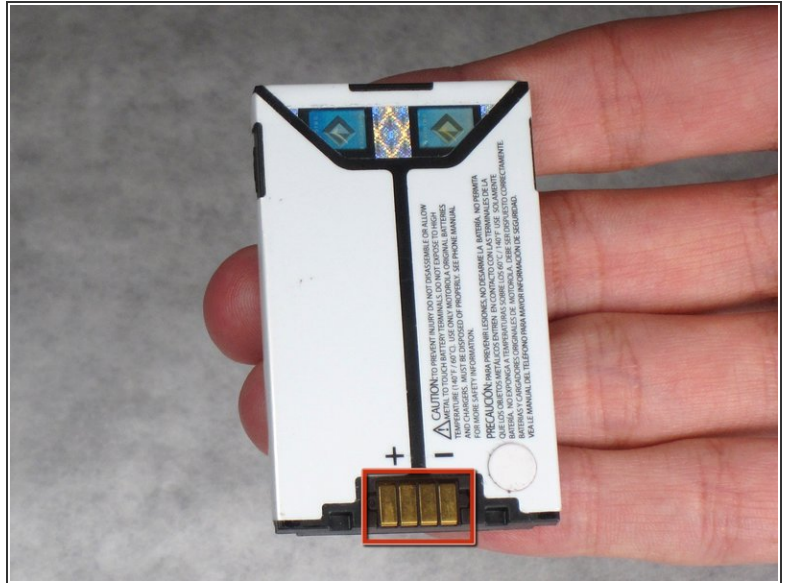
## Step 2



- Insert a plastic spudger near one corner of the battery (preferably one furthest from the phone's antenna).
- Gently pry the battery up and away from the phone. The battery should easily raise out of its place.
- Now that the battery is exposed, use your fingers to remove the it from the phone.



## Step 3



- Note the metal connections on the phone, which are now exposed with the battery removed.
- There are corresponding metal connectors on the replacement battery.
- When you install the battery, be sure both connectors are matched up. Otherwise, your battery will be unable to supply power to your phone.

## Step 4 — Motherboard



- Use a spudger to remove the rubber plug from the upper left corner of the back of the phone.

## Step 5



- Use a Torx T6 screwdriver to remove the 4 screws that secure the back plate of the phone.

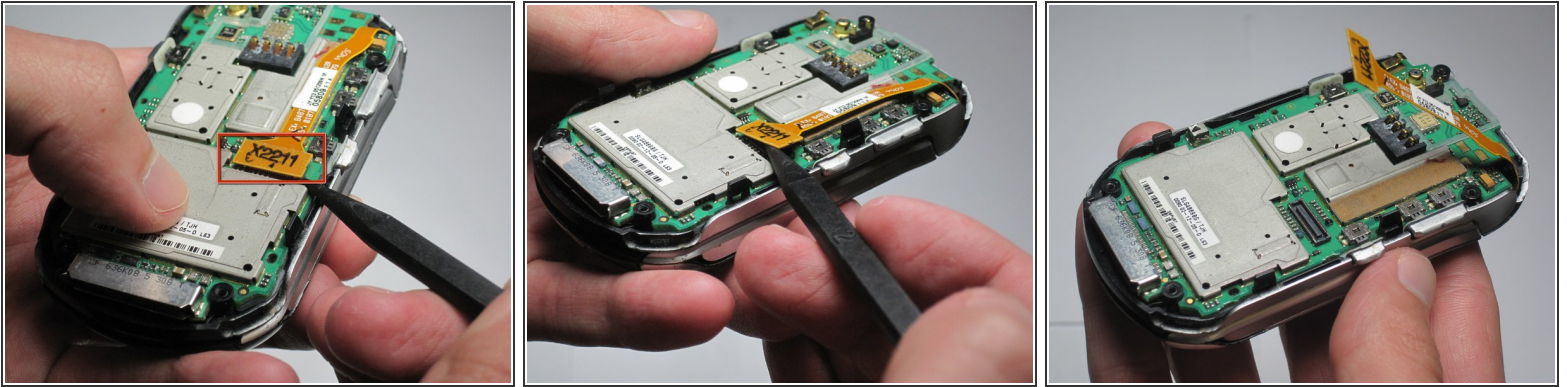
## Step 6



- Three tabs will hold the back plastic plate in.
  - To remove the back plate, pull the tabs towards the outside of the phone and lift the plate up simultaneously
- ⚠ Be careful when removing the back plate; don't put too much stress on the back plate or the plastic may snap



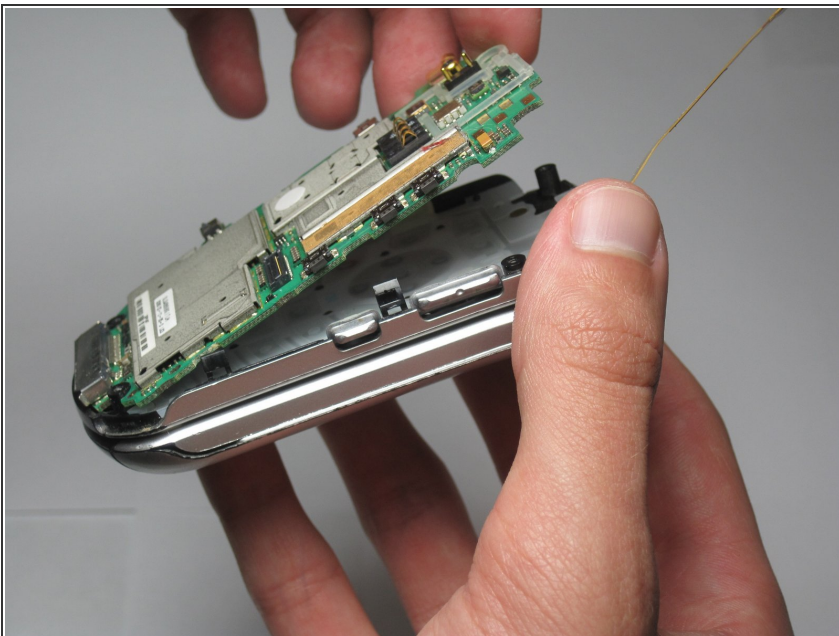
## Step 7



- Use a spudger to remove the ribbon cable from the motherboard.

⚠ Be delicate while removing the ribbon cable because it is slightly fragile and it is necessary for the phone to function

## Step 8



- Gently peel back the motherboard from the main part of the phone.

To reassemble your device, follow these instructions in reverse order.