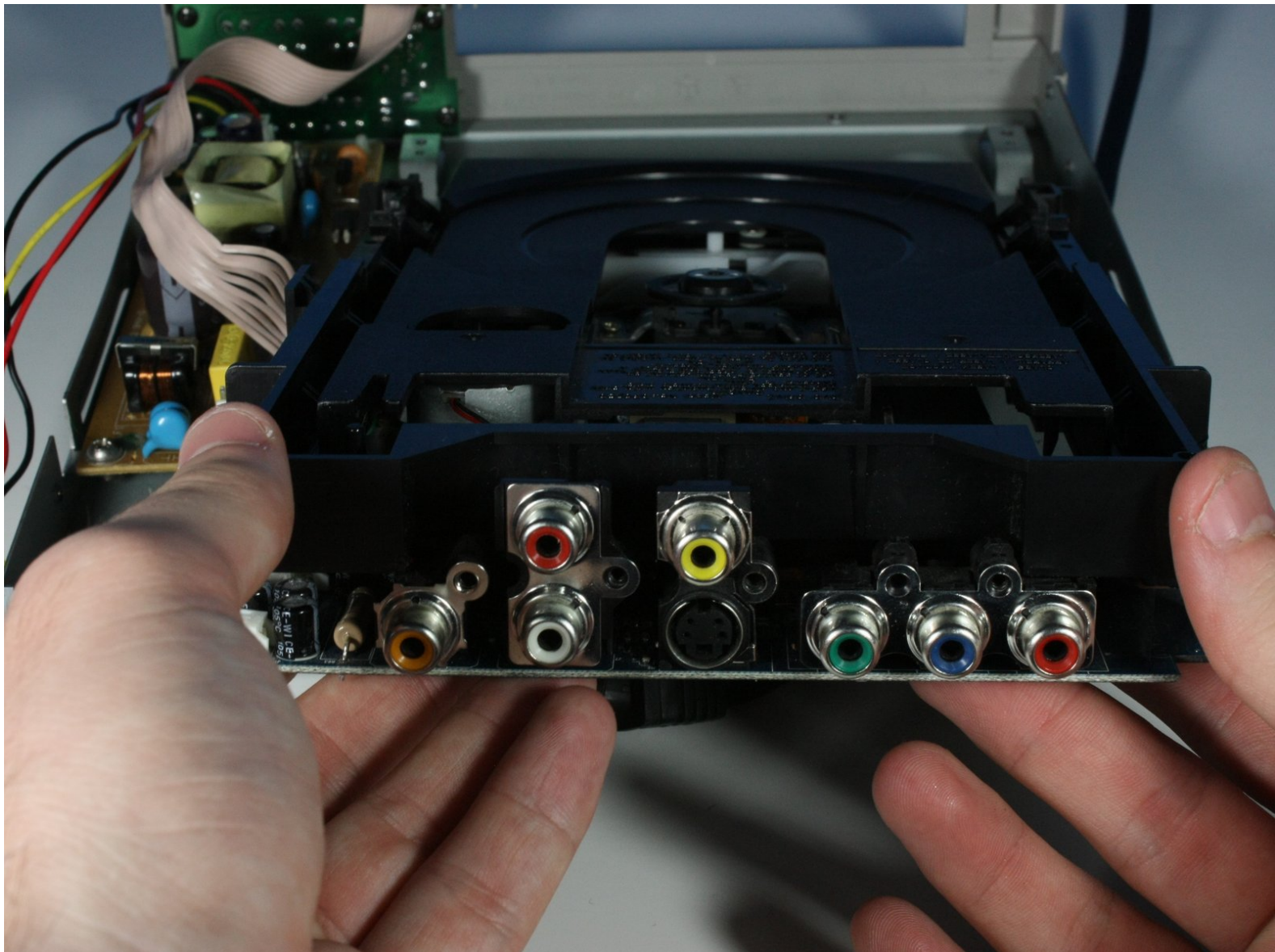




CyberHome CH-DVD 300 Disc Tray Replacement

Replace the disc tray in your CyberHome DVD 300 to repair damage to the disk tray.

Written By: Chris Menezes



INTRODUCTION

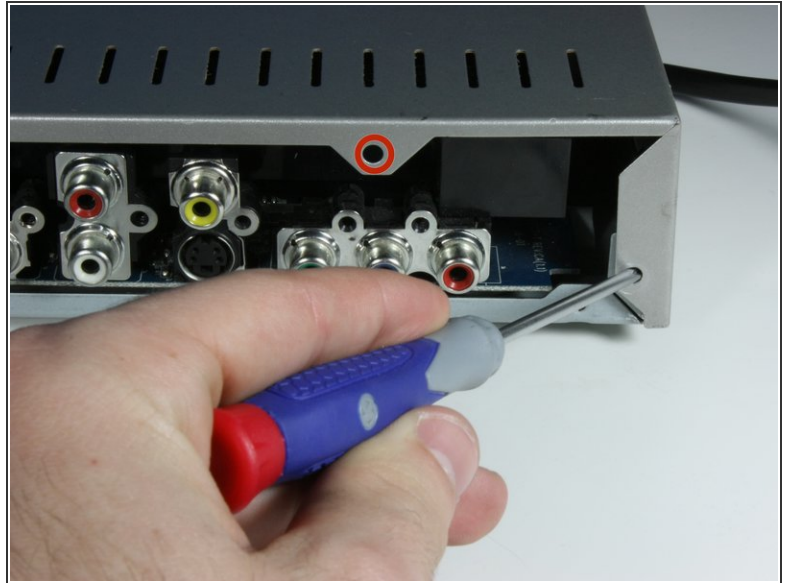
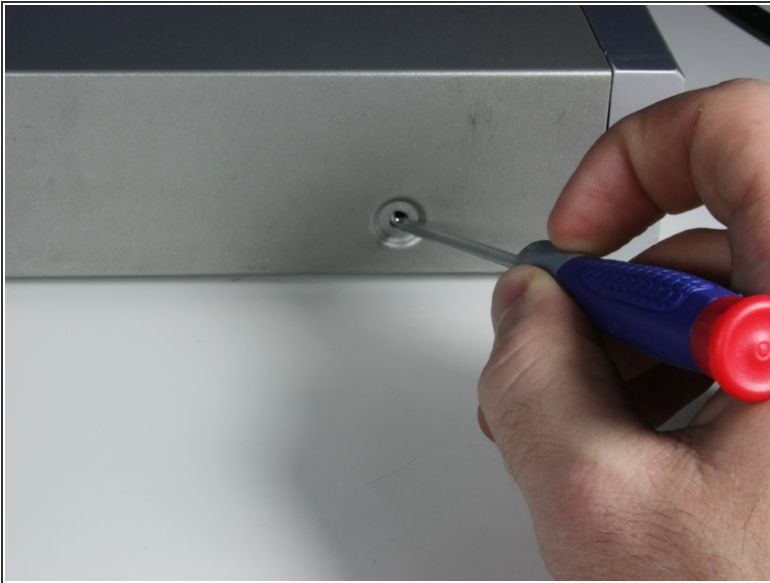
Replacing the disk tray requires you to first remove the top and back panels of the DVD player, locate the black disk tray, and slide away the disk tray




TOOLS:

- [Phillips #0 Screwdriver](#) (1)
-

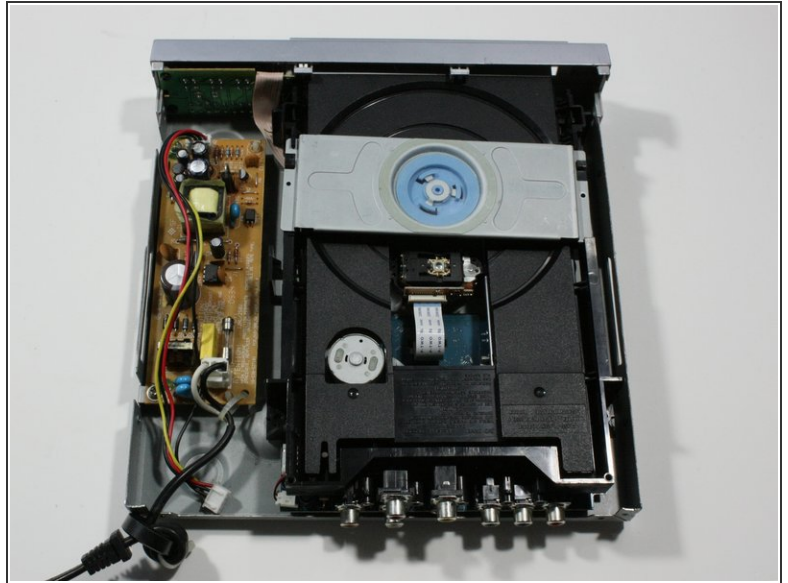
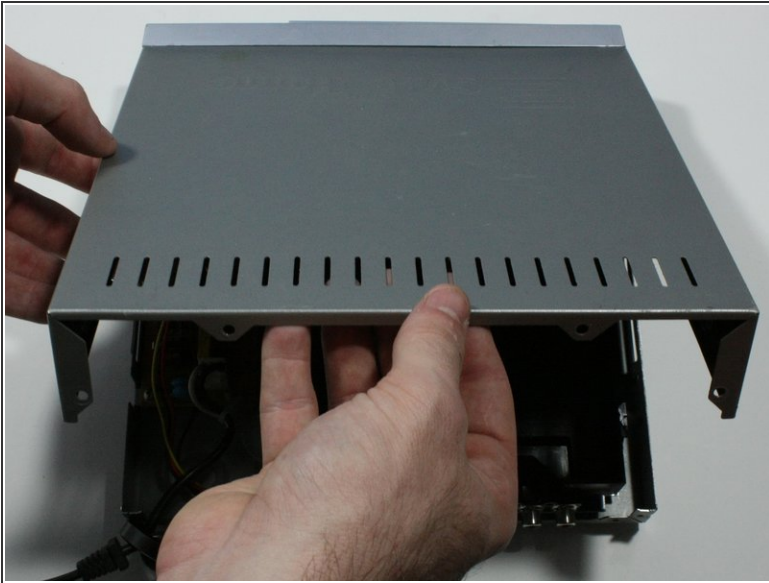
Step 1 — Top Panel



 Turn the DVD player off. Unplugging the DVD player while it is on may result in damage to the DVD player or an inserted CD.

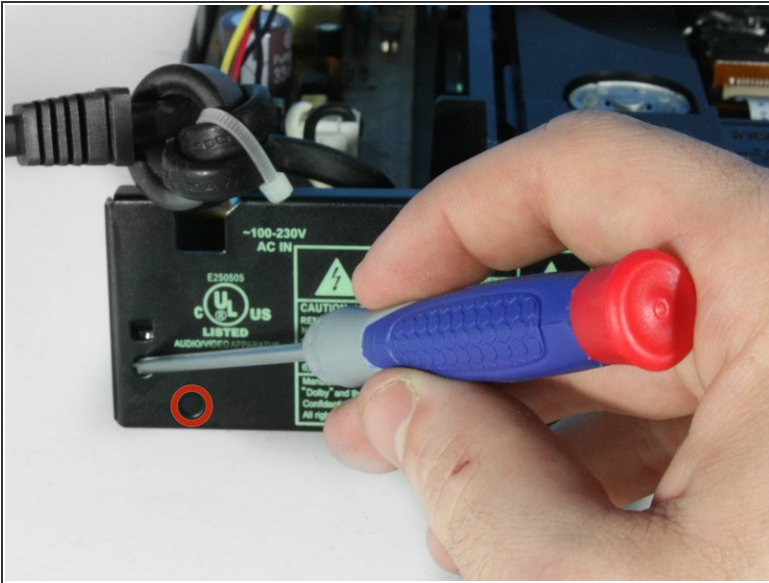
- Unplug the DVD player from the wall socket.
- Locate the 15mm Phillips screws on the left side (1 screw), right side (1 screw), and back (4 screws) of the DVD Player. Use the appropriate Phillips head screwdriver to remove the six screws.

Step 2



- Remove the top panel of the DVD Player by:
 - Sliding the top panel backwards.
 - Gently lifting the back of the top panel up.

Step 3 — Back Panel



- Remove the remaining screws on the back of the DVD player:
 - ❗ There will be four 15 mm screws and two 6.3 mm screws.

Step 4



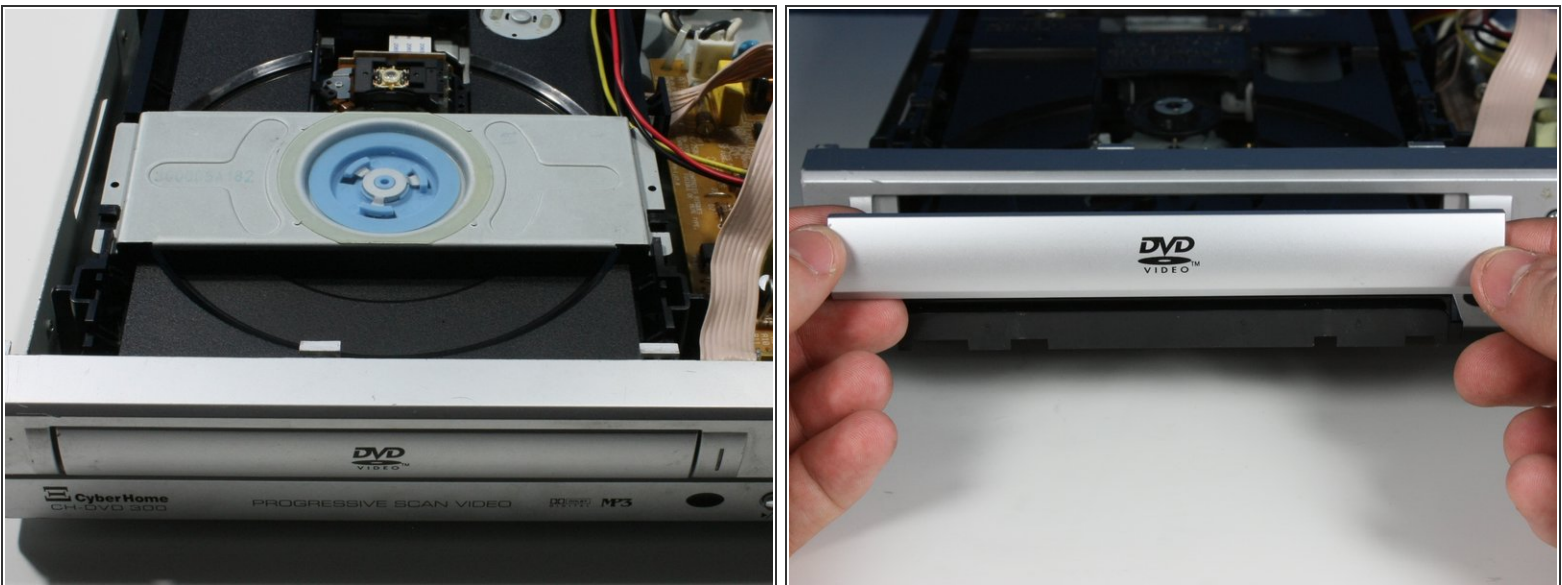
- Remove the back panel by:
 - Lifting up on the back panel.
 - Pulling the back panel backwards from the DVD player.

Step 5 — Disc Tray



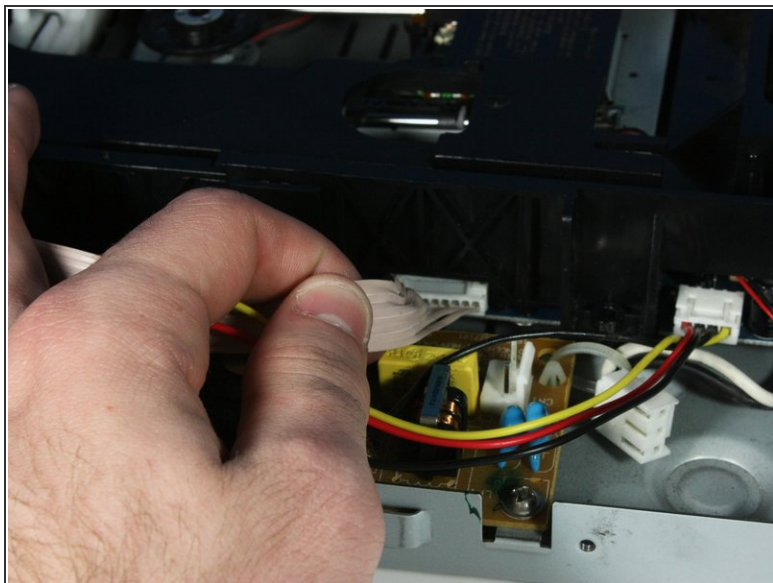
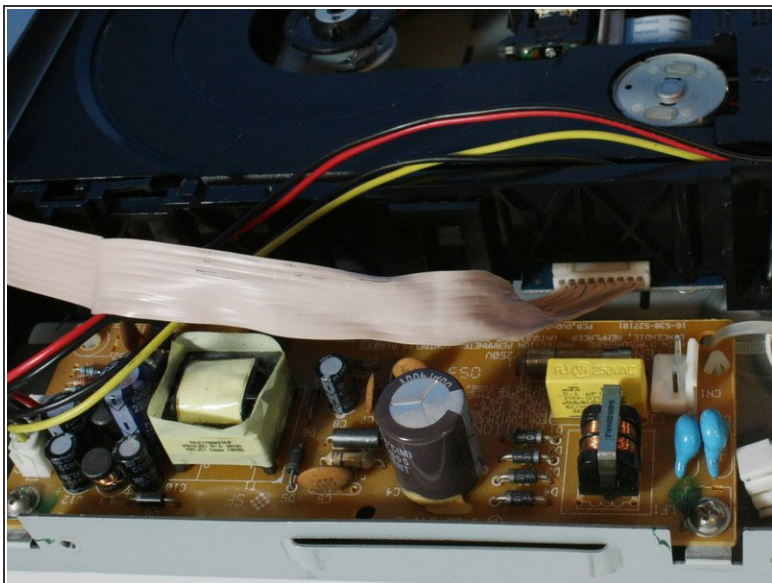
- Remove the four 8.1mm screws in each of the corners of the disc tray.

Step 6



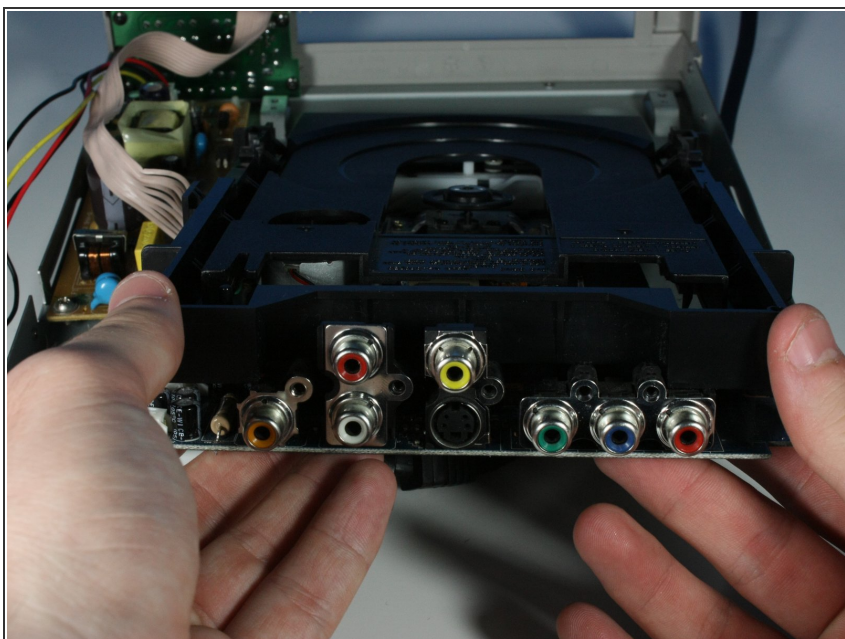
- Orient the device so the front is facing towards you. Remove the disc tray faceplate by lifting up on both corners firmly.
- ❗ The faceplate is located on the front of the DVD player and will prevent the disc tray removal if not removed.

Step 7



- Detach the ribbon cable from the side of the DVD player by gently pulling it out.

Step 8



- Orient the device so the back is facing towards you. Remove the disk tray out towards the back of the DVD player by lifting it.

To reassemble your device, follow these instructions in reverse order.